

Nipomo Community Services District

May 5, 2014

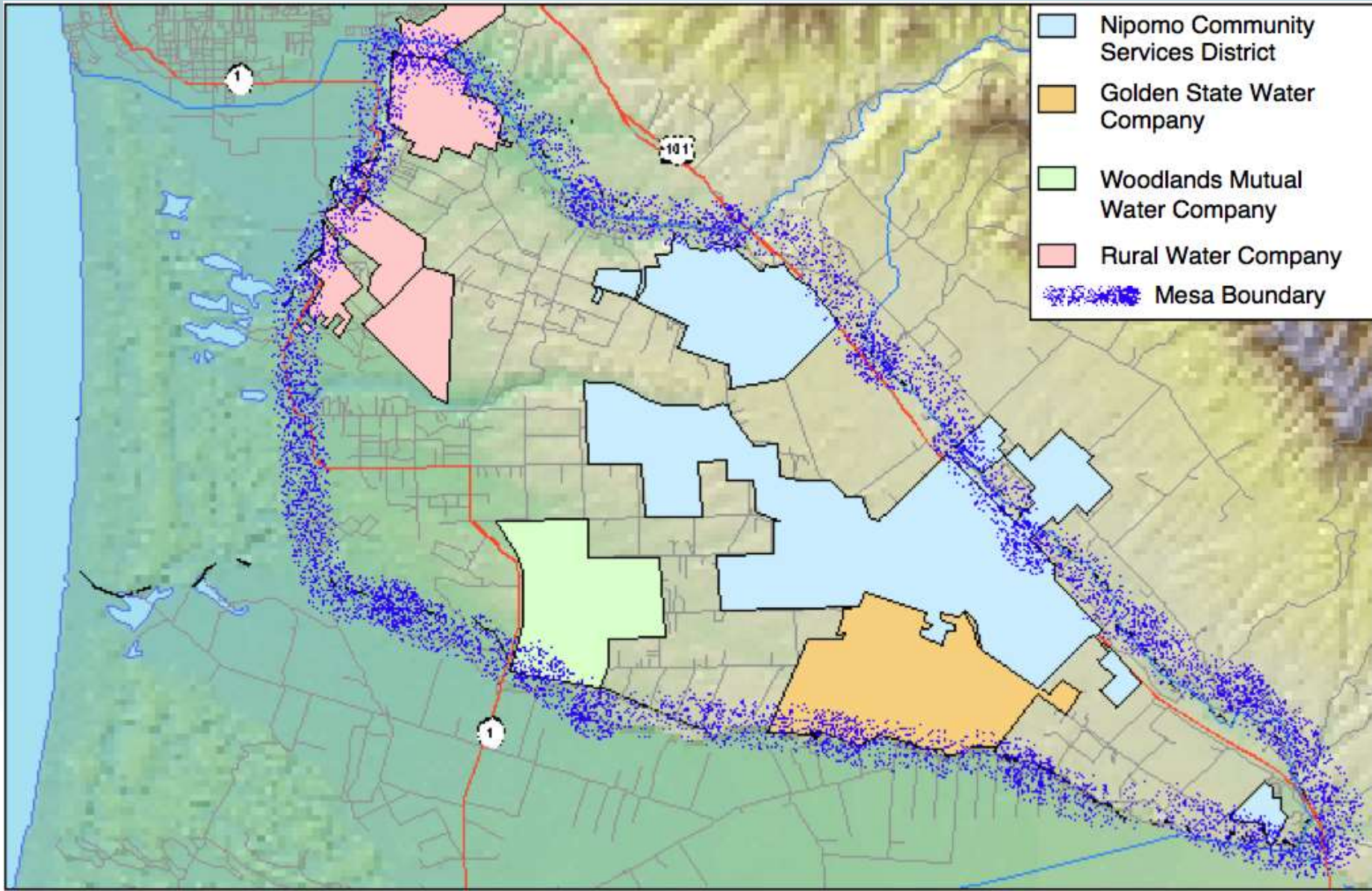
Nipomo CSD



The Problems Caused by Decades of **OVERPUMPING** and **DROUGHT** and Our Proposed Solutions



Nipomo Mesa Water Purveyors



Our Groundwater Supply Is In Trouble Here's Why



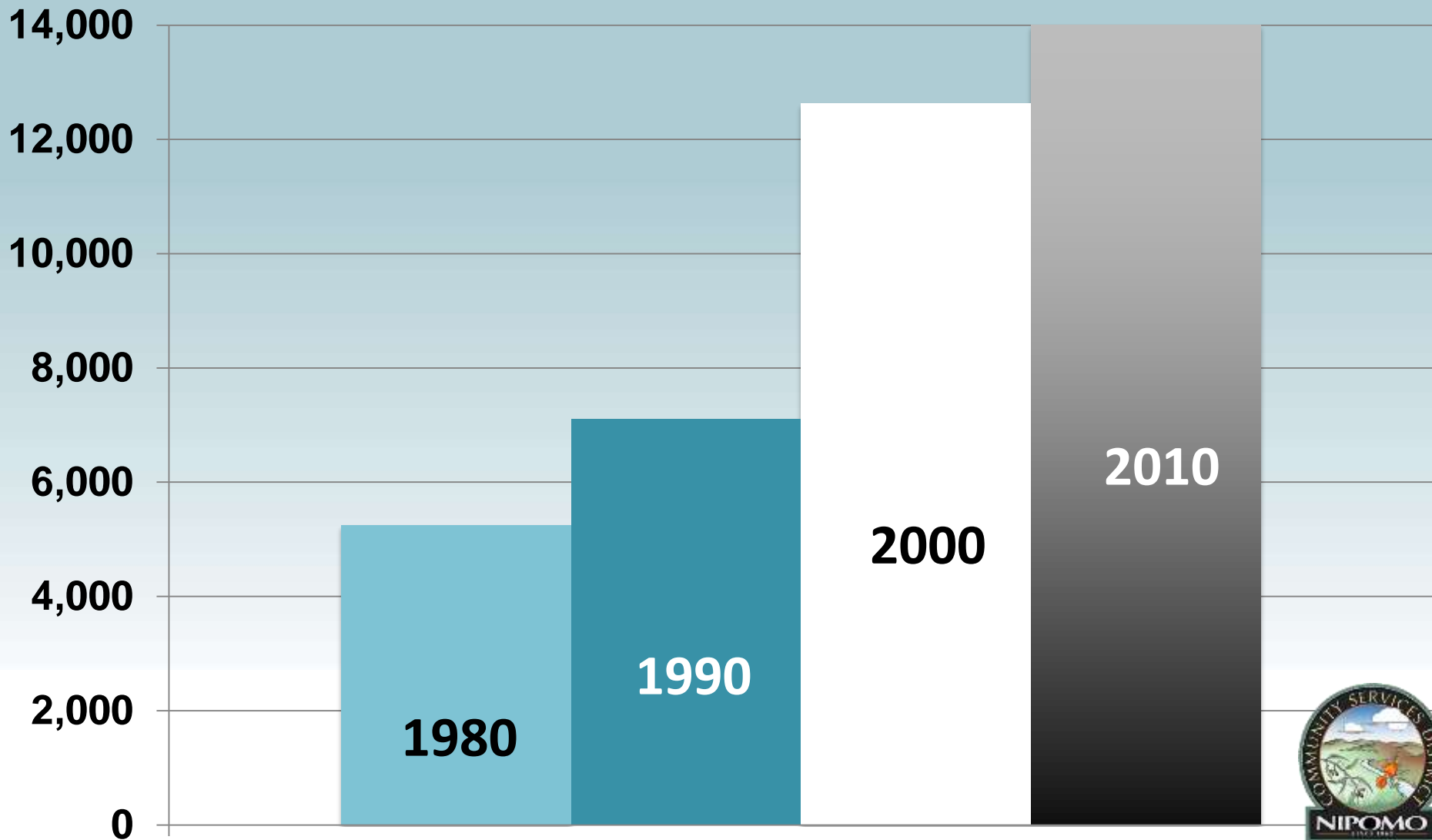
Our Water Problem

The Nipomo Mesa has
only ONE source of water . . .

. . . the groundwater pumped from
beneath us.

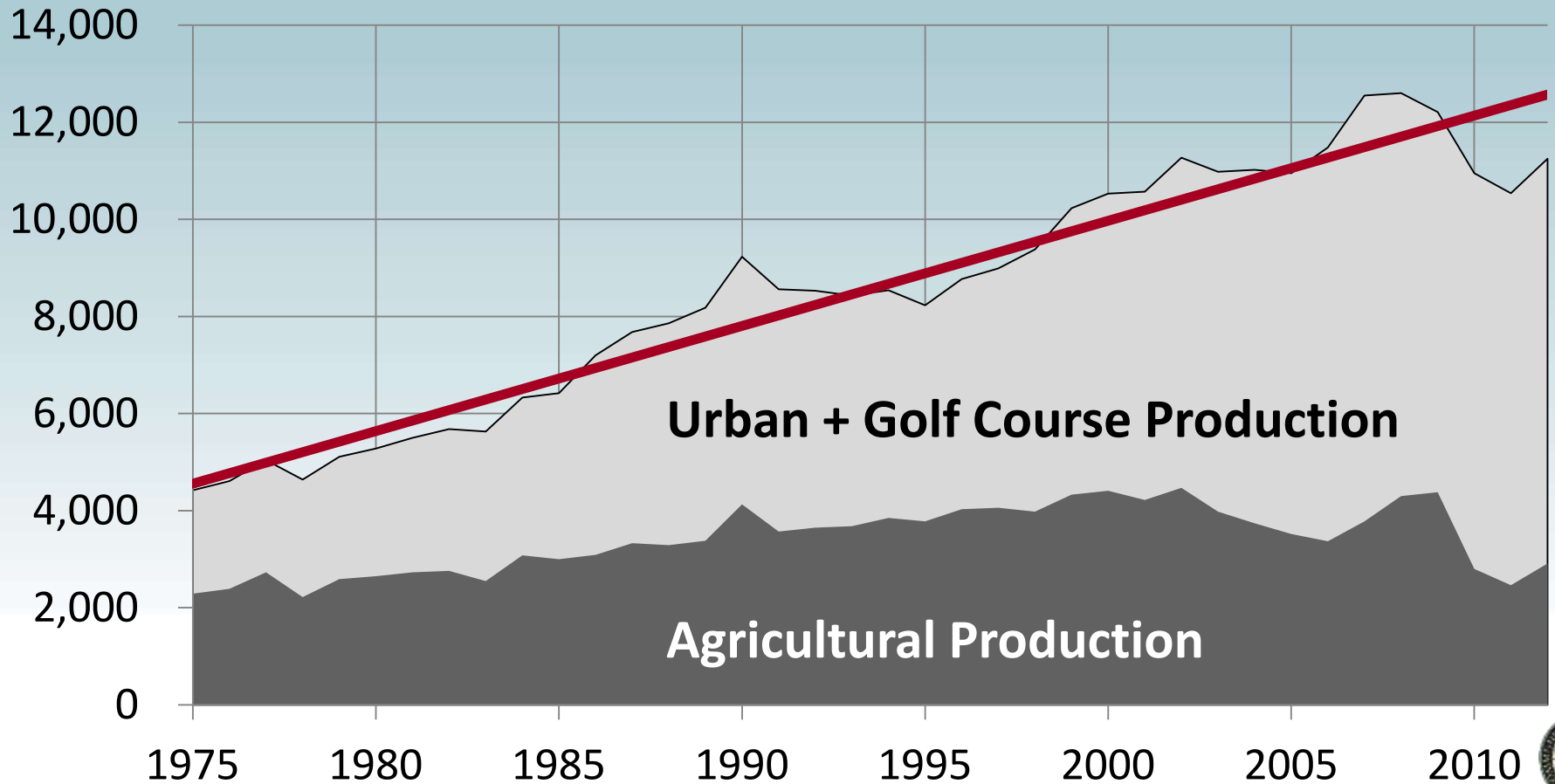


Nipomo Mesa Population Growth Has More Than Doubled Since 1980



Nipomo Mesa Water Use Steady Increase Since 1970s

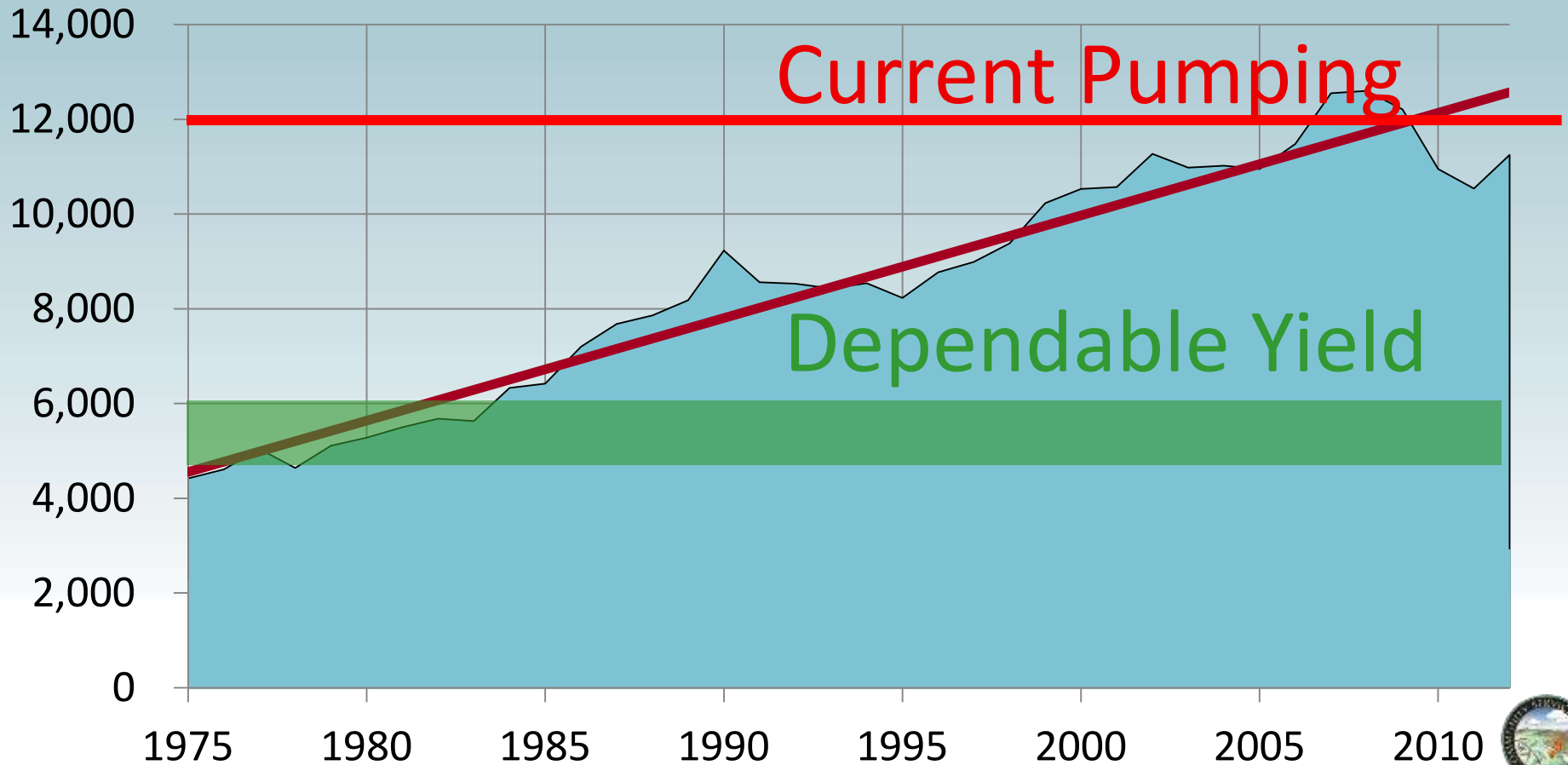
Acre-Feet



Our pumping exceeds the dependable yield

The Amount That Can Be Pumped Reliably Into the Future

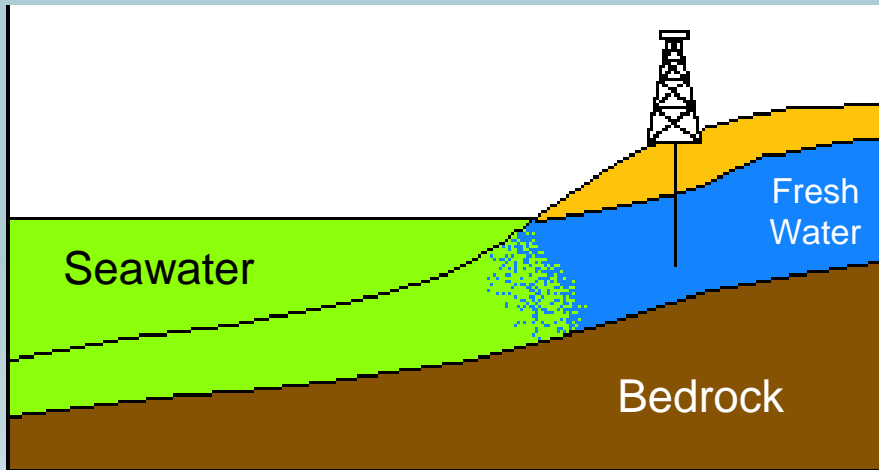
Acre-Feet



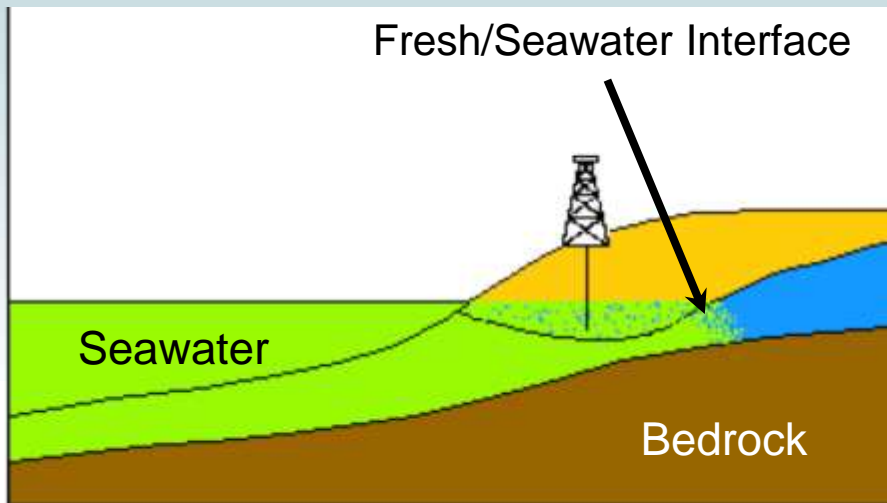
**Since we are next to the
Pacific Ocean,
exceeding the
dependable yield
is likely to invite
seawater intrusion**



Our Aquifer is Next to the Pacific Ocean



When fresh water table stays above sea level...
Seawater stays offshore.

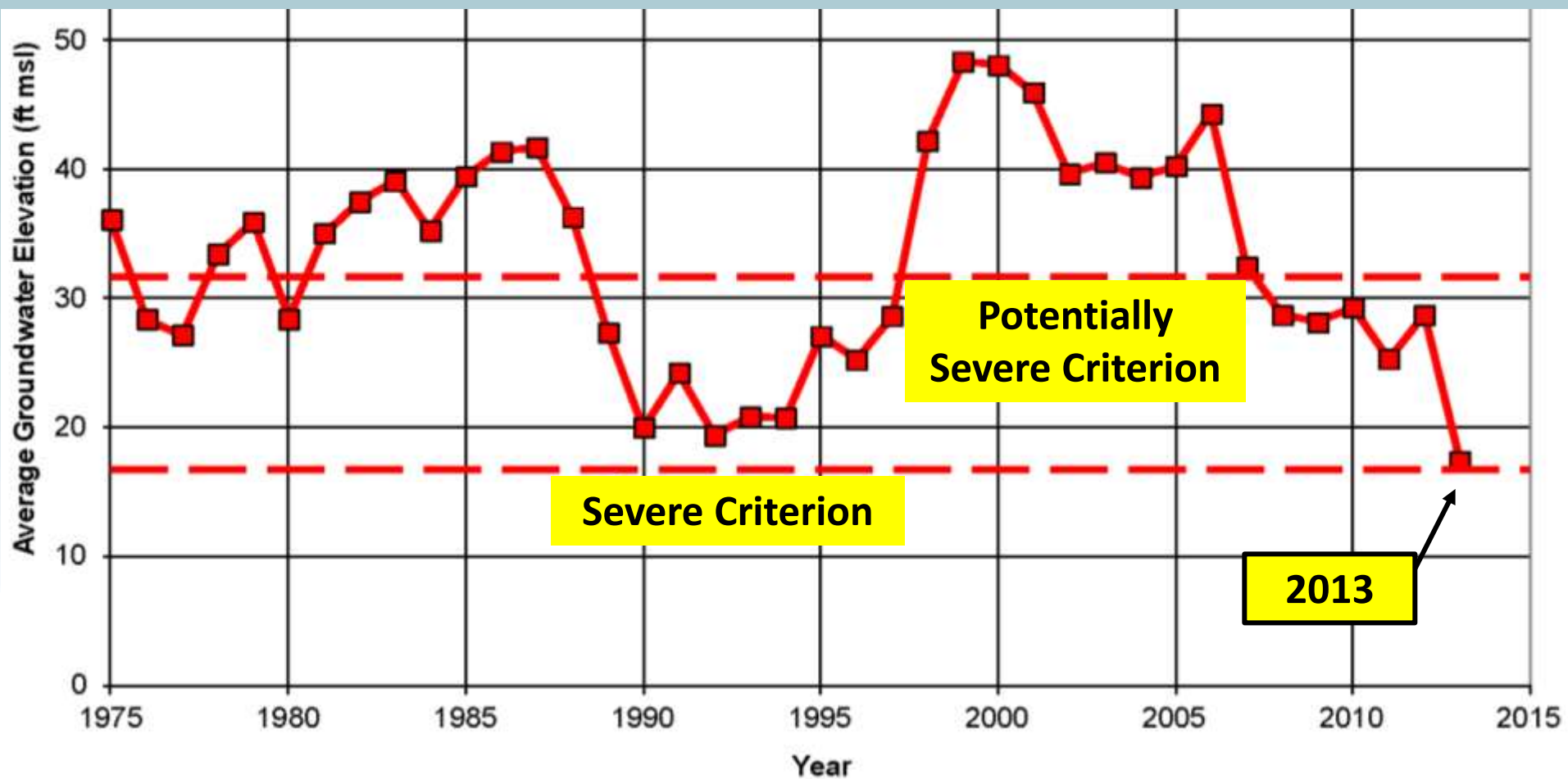


Too much pumping...
Can cause the fresh water table to fall below sea level...
Creating an invitation for seawater intrusion.



Approached “*Severe Shortage*” Groundwater Levels in 2013

Conditions Worse This Year. Official Report on Groundwater Health in May



Groundwater Levels in Trouble Before the Drought...

Now even more so.



Regional Seawater Intrusion Problem

	Los Osos	Five Cities Area	Nipomo Mesa
Aquifer shared with the Pacific Ocean	X	X	X
Decreasing well levels	X	X	X
Pumping freshwater wells below sea level	X	X	X
Seawater intrusion documented	X	X	Not yet...
Freshwater Wells Permanently Lost to Seawater Intrusion	X	Not yet...	Not yet...



Looming Likelihood of Seawater Intrusion

ALL cases of seawater intrusion elsewhere started with:

1. Pumping aquifers beyond the **dependable yield**
2. Consistent dropping of water levels in wells
3. Well levels falling below sea level

We are experiencing all three of these conditions



Status – Potentially Severe Water Shortage Condition

- **Last year, area wells dropped to their lowest level on record**
- **Nearly: Severe Water Shortage condition.**
- **Third year of drought has continued to degrade the groundwater condition;**
- **Official update on the Basin status in May.**



We are Bringing New Water To Nipomo



Drought Response Plan #1: Obtain Supplemental Supply

- **3,000 acre-feet of new water to our community.**
- **Construction is underway and 650 acre-feet of new water supply will be available next year.**
- **Our rates are among the lowest in the region. Need supplemental charge when new water arrives.**
- **Additional investment is needed to bring in remaining 2,350 acre-feet of new supply.**



We Adopted a Water Shortage Response Plan and Considering Drought Rates



Drought Response Plan #2: Drought Response and Management Plan

- 1. Five Escalating Drought Stages**
- 2. Targeted Water Use Reduction by Voluntary Conservation**
- 3. Processing Permits for New Water Would Decrease—Then Stop**
- 4. Proposed Drought Rates May Be Implemented**



Must Implement Effective Drought Plan: Cutbacks in Use and Bring in New Water

If we fail to act. Nipomo Mesa water shortage consequences:

- **Seawater Intrusion - Contaminated Groundwater**
- **Permanent Loss of Fresh Water Wells**
- **Extreme Water Rationing**
- **Prolonged Water Shortages**
- **Significant Negative Property Value Impacts**

