

TO: BOARD OF DIRECTORS

REVIEWED: MICHAEL S. LEBRUN
GENERAL MANAGER

FROM: JESSICA MATSON
PUBLIC INFORMATION
DIRECTOR/CLERK

DATE: JANUARY 7, 2016

**AGENDA ITEM
E-1
JANUARY 13, 2016**

**CONSIDER GRANT REQUEST FROM NIPOMO CHAMBER OF
COMMERCE IN AMOUNT OF \$35,000 FOR SOLID WASTE REMOVAL
IN NIPOMO COMMUNITY COMMON AREAS**

ITEM

Nipomo Chamber of Commerce is requesting grant funds in the amount of \$35,000 to provide clean-up of solid waste in the Nipomo area [RECOMMEND CONSIDER REQUEST FOR GRANT FUNDS IN AMOUNT OF \$35,000].

BACKGROUND

The Nipomo Chamber of Commerce is requesting grant funds to continue a successful program for cleaning up litter within the Nipomo Community.

The clean-up program was pilot tested in late 2012. Since that time your Board has approved five grant requests for progressively longer duration. In February 2015, your Board approved a grant of \$30,000 to fund the program through November 2015.

The Chamber is requesting twelve months of program funding at a cost of \$35,000 (apx \$2,900 per month). Chamber Executive Director, Ms. Amber Wilson, has provided the attached proposal and will present the proposal and answer questions from your Board.

FISCAL IMPACT

Grant funds are paid against Achievement House Invoices for services provided in Nipomo plus 10% for Chamber administration. Funds to support solid waste services may be allocated from the District solid waste fund. The solid waste franchise income is approximately \$10,000 monthly. The balance of the solid waste fund is approximately \$260,000.

STRATEGIC PLAN

Strategic Plan Goal 7.A.2 – Provide additional solid waste services
Strategic Plan Goal 7.A.3 – Communicate with customers

RECOMMENDATION

Receive presentation, consider grant request. If desired, approve grant request by motion and roll call vote. Should your Board desire to approve grant request, direct staff to execute a Grant Agreement with Nipomo Chamber of Commerce for the approved grant amount and duration.

ATTACHMENT

A. November 23, 2015, Nipomo Chamber of Commerce Grant Request

January 13, 2016

ITEM E-1

ATTACHMENT A



November 23, 2015

To: Nipomo Community Services District

Re: Solid Waste Grant Program

Dear NCSO Board & Staff,

We are approaching the closing of year three of the NCSO granting funds to the Nipomo Chamber of Commerce to facilitate the removal of solid waste from the streets of our town. The feedback has been overwhelmingly positive as our residents are noticing a significant change in the cleanliness of our community. We are pleased to see the noticeable decrease of litter in the streets and vacant lots, weeds growing in the gutters and sidewalks and parts of the town looking neglected.

Your generous grant of Solid Waste Funds has allowed the Nipomo Chamber of Commerce Staff to hire Achievement House to carry out the much needed work of keeping our great community clean. Achievement House works with developmentally disabled adults providing training and jobs, offering a higher quality of life and a chance to contribute to the community. The workers on these crews have an enormous feeling of pride for what they have accomplished and they have truly transformed our town.

We are continuing to improve our efforts to gain more recognition of what can be accomplished in a community when public and private entities collaborate to solve a problem. As our residents become more aware of this program we are receiving additional requests for various projects around Nipomo; thus resulting in an increase in monthly clean-up costs billed through Achievement House. Over the last year our monthly grant funding requests have averaged \$2,630.90; therefore, we are requesting a grant for \$35,000 to cover the next 12 month period from December, 2015 – November, 2016. Overall this results in a 16% increase from the previous funding cycle and we are confident the increased costs will ensure the continued beautification of our town. Thank you for your consideration we look forward to continuing this excellent example of community partnership.

Amber Wilson, Executive Director

/ Richard Malvarose, President

*Nipomo Chamber of Commerce 239 W. Tefft St. Nipomo, CA 93444
(805)929-1583*

TO: BOARD OF DIRECTORS
FROM: MICHAEL S. LEBRUN *msl*
GENERAL MANAGER
DATE: JANUARY 8, 2016

**AGENDA ITEM
E-2**

JANUARY 13, 2016

**RECEIVE FALL 2015 GROUNDWATER INDEX REPORT
BY BRAD NEWTON, Ph.D, PG**

ITEM

Presentation of the fall groundwater index for the Nipomo Mesa area. [RECOMMEND RECEIVE AND FILE REPORT]

BACKGROUND

Doctor Brad Newton will review recent work to update the Ground Water Index and will provide a presentation of the fall 2015 Ground Water Index.

Doctor Newton's report and the Ground Water Index is an independent work product of the District. This work is not reviewed by the Nipomo Mesa Management Area Technical group.

FISCAL IMPACT

Funds for preparation of this report are included in the FY 2015-16 Budget.

STRATEGIC PLAN

Goal 1. WATER SUPPLIES. Actively plan to provide reliable water supply of sufficient quality and quantity to serve both current customers and those in the long-term future.

- 1.6 Continue to monitor and participate in water supply issues and programs with other local and regional organizations

RECOMMENDATION

Staff recommends that the Board receive the Report and direct staff.

ATTACHMENTS

- A. Technical Memo #31 Fall 2015 Groundwater Index

January 13, 2016

ITEM E-2

ATTACHMENT A



1 TECHNICAL MEMORANDUM

2
3 TO: Michael LeBrun, General Manager NCSD
4 FROM: Brad Newton, Ph.D., P.G.
5 RE: Technical Memorandum #31 - Spring and Fall 2015 Ground Water Index
6 DATE: December 30, 2015

7 INTRODUCTION

8 Groundwater surface elevations (GSE) underlying the Nipomo Mesa are regularly
9 measured at many places (wells) across the mesa. The Spring and Fall 2015 Ground Water
10 Index (GWI) has been computed from GSE and presented herein along with historical GWI
11 from 1975 to present based on these groundwater surface elevation measurements collected
12 during spring and fall across the Nipomo Mesa. Limited measurements of GSE were available
13 for the years 1982, 1983, 1984, 1994 and 1997, precluding a reliable calculation of GWI for those
14 years.

15 Hydrologic processes which comprise the following series of water balance equations
16 were related to the GWI and correlations coefficients were computed. Correlation does not
17 require a causal relationship, however in this case, where ground water elevations are the
18 integration of these hydrologic processes, causality is implicit. The water balance equations and
19 the correlation results were presented at the December 10, 2014 NCSD Board of Directors
20 meeting:

21 Land Surface Water Balance

22 $R = R_u + I_r + E,$

23 $P = I_p,$

24 $I_{tot} = I_r + I_p = R + P,$ when R_u and E assumed to equal zero,

25 Soil Profile Water Balance

26 $\Delta S_s = I_{tot} - CU - Re,$

27 Substituting for " I_{tot} " and rearranging yields,

28 $Re = R + P - CU - \Delta S_s;$

29 Aquifer Water Balance

30 $\Delta S_{gw} = Re + F_{in} - F_{out} - P,$

31 Substituting for " Re ",

TO: Michael LeBrun, GM NCSD
RE: Spring and Fall 2015 GWI
DATE: December 30, 2015
Page 2 of 10

$$\Delta S_{gw} = R - CU - \Delta S_s + F_{in} - F_{out}$$

Summary Water Balance

$$GWI \cong \Delta S_{gw} = R - CU - \Delta S_s + F_{in} - F_{out}$$

where:

R = Rainfall (measured),

Ru = Runoff (assumed zero),

E = Evaporation from surface (assumed zero)

I_r = Infiltration of Rainfall (calculated from water balance),

I_p = Infiltration of Pumped Water (calculated from water balance),

CU = Consumptive Use (calculated from land use and climate),

ΔS_s = Change in Soil Storage (calculated from I, CU, and soil properties),

Re = Recharge (calculated from I_{tot} and ΔS_s),

ΔS_{gw} = Change in Ground Water (calculated from water balance),

F_{in} = Ground Water Flow In (calculated from groundwater gradients and stratigraphy),

F_{out} = Ground Water Flow Out (calculated from groundwater gradients and stratigraphy),

P = Pumped Water (measured).

The Nipomo Mesa Management Area (NMMA) Technical Group (TG) has not reviewed this technical memorandum, its findings, or any presentation of this evaluation.

RESULTS

The Spring 2015 GWI is 52,000 AF and the Fall 2015 GWI is 45,000 AF (Table 1, Figure 1), and is the lowest Spring - Fall GWI on record. The decline in the GWI since the year 2012 is severe and related to the drought. Rainfall from year 2013 to present has been approximately forty-two percent of the long-term average. However, the GWI has been in decline since the year 2001 where rainfall had been slightly above average. Consumptive use of ground water produced is certainly a contributing factor to the GWI (see Summary Water Balance equation above and Correlation Coefficients in Table 3) and the only significant component of the hydrologic inventory that is currently being managed. Given the drought condition this year, the small difference in the GWI from Spring to Fall is likely in response to a reduction in

t:\district projects\water resources mgmt\gw index\20151230 tm31 spring and fall 2015 gwi.doc

Newton Geo-Hydrology Consulting Services

P.O. Box 2081, Santa Barbara, CA 93120 • (805) 636-6619 • bnewton@NGHcorp.com

TO: Michael LeBrun, GM NCSD
RE: Spring and Fall 2015 GWI
DATE: December 30, 2015
Page 3 of 10

1 Consumptive Use resulting from increased conservation efforts by purveyors and others, and
2 the new water brought to the NMMA through the Nipomo Supplemental Water Project.

3 The 2015 Key Well Index (KWI) value (10 ft msl) has significantly decreased from the
4 previous year (18.5 ft msl), and is in the Severe Water Shortage Condition (see Methodology for
5 KWI explanation). The KWI generally follows the same historical trends as the GWI (Figure 1).

7 **METHODOLOGY**

8 The calculation of spring and fall GWI are based on GSE measurements regularly made by
9 San Luis Obispo County Department of Public Works (SLO DPW), NCSD, USGS, and
10 Woodlands. The integration of GSE data is accomplished by using computer software to
11 interpolate between measurements and calculate GWI within the principal production aquifer
12 assuming an unconfined aquifer and a specific yield of 11.7 percent. Limited measurements of
13 GSE were available for the years 1982, 1983, 1984, 1994 and 1997, precluding a reliable
14 calculation of GWI for those years.

15 **Groundwater Surface Elevation Measurements**

16 Groundwater surface elevation data were obtained from SLO DPW, NCSD, USGS, and
17 Woodlands. SLO DPW measures GSE in monitoring wells during the spring (April) and the fall
18 (October) of each year. Woodlands and NCSD measures GSE in their monitoring wells
19 monthly. For the years 1975 to 1999, available representative GSE data were used to compute
20 GWI. For the years 2000 to 2011, only GSE data from the same 45 wells were used to compute
21 GWI.

22 The GSE data was reviewed in combination with well completion reports and historical
23 hydrographic records in order to exclude measurements that likely do not accurately represent
24 static water levels within the principal production aquifer. Wells that do not access the
25 principal production aquifer or were otherwise determined to not accurately represent static
26 water levels within the aquifer were not included in analysis.

27 **Groundwater Surface Interpolation**

28 The individual GSE measurements from each year were used to produce a GSE field by
29 interpolation using the inverse distance weighting method.

30 **Ground Water Index**

31 The GWI is defined as the annually normalized value of the saturated volume above sea
32 level and bedrock multiplied by the specific yield of 11.7 percent. The GWI is comprised from
33 approximately 45 ground water elevation measurements made by the County of San Luis

TO: Michael LeBrun, GM NCSD
RE: Spring and Fall 2015 GWI
DATE: December 30, 2015
Page 4 of 10

1 Obispo each April and October. The value of the Ground Water Index was computed for an
2 area approximately similar to the NMMA Boundary. The base of the saturated volume is mean
3 sea level surface (elevation equals zero) or the bedrock, whichever is higher. The bedrock
4 surface elevation is based on Figure 11: Base of Potential Water-Bearing Sediments, presented in
5 the report, Water Resources of the Arroyo Grande – Nipomo Mesa Area (DWR 2002). The
6 bedrock surface elevation was preliminarily verified by reviewing driller reports obtained from
7 DWR. The specific yield is based on the average weighted specific yield measurement made at
8 wells within the Nipomo Mesa Hydrologic Sub-Area (DWR 2002, pg. 86). The GWI is similar to
9 the Key Well Index presented in the Nipomo Mesa Management Area Technical Group annual
10 report to the Court, but is not directly comparable.

11 **Key Well Index**

12 The Key Well Index (KWI) was developed by the NMMA Technical Group from eight
13 inland wells representing the whole of the groundwater basin within the NMMA. The Key
14 Well Index was defined for each year from 1975 to present as the average of the normalized
15 spring groundwater data from each well. The lowest value of the Key Well Index could be
16 considered the “historical low” within the NMMA.

17 **Hydrologic Inventory**

18 The time series values of the components of the hydrologic inventory used in this analysis
19 were taken from trial exhibits presented during litigation. The correlation coefficient was
20 calculated for each element of the inventory and GWI, and then ranked. Time series were
21 lagged where conditions of system memory are physically feasible.

22 The relationship between each hydrologic process, represented in the summary water
23 balance equation, and the GWI was ranked by computing the correlation coefficient. Large
24 correlation coefficient and causality indicates a high efficacy of developing a successful model.
25 Lagged time series showed no improvement in and often greatly degraded the correlation
26 coefficients. The relationship between the cumulative sum of departure from the mean rainfall
27 (CSDM_r) and GWI has the highest correlation coefficient, 0.713. The variation in the CSDM_r
28 explains 71% of the variation in the GWI over time. This is anticipated in this basin where
29 groundwater is primarily replenished by rainfall. The second highest correlation exists between
30 Consumptive Use (CU) and GWI explaining an additional 10% of the GWI variation when
31 added to the CSDM_r, a total correlation coefficient of 0.816. Thus, 81% of the variation in GWI is
32 explained by the combined CSDM_r and CU. Combining CSDM_r and total production resulted
33 in a lesser correlation coefficient of 0.746. Groundwater Flow in to (F_{in}) and out from (F_{out}) the
34 mesa area, together as net flow (Net F), were added to CSDM_r which slightly degraded the
35 overall correlation with GWI; a correlation coefficient of 0.811. However, when CSDM_r, CU,

t:\district projects\water resources mgmt\gw index\20151230 tm31 spring and fall 2015 gwi.doc

TO: Michael LeBrun, GM NCSD
RE: Spring and Fall 2015 GWI
DATE: December 30, 2015
Page 5 of 10

1 and Net F are combined, the overall correlation with GWI improves very slightly. This final
2 correlation coefficient is 0.817 (Tables 2 and 3). Therefore, rainfall amounts are the largest
3 influence on the amount of ground water. The next most important process related to the
4 amount of ground water is consumptive use. A scatter plot was prepared to determine if this
5 correlation is bias over the range of water levels (Figure 2). The slope of the linear trend line is
6 0.986 suggesting that no bias as a function of groundwater elevation exists.

7

8 **REFERENCES**

9 Department of Water Resources (DWR). 2002. Water Resources of the Arroyo Grande - Nipomo
10 Mesa Area, Southern District Report. 2002.

11

TO: Michael LeBrun, GM NCSD
 RE: Spring and Fall 2015 GWI
 DATE: December 30, 2015
 Page 6 of 10

**Spring and Fall
 Groundwater Index
 (GWI, Acre-Feet)**

Year	Rainfall (inches)	Spring GWI (Acre-Feet)	Number of Wells	Fall GWI (Acre-Feet)	Number of Wells	Spring to Fall Difference (Acre-Feet)
1975	17.29	99,000	54	91,000	54	8,000
1976	13.45	82,000	45	76,000	65	6,000
1977	10.23	64,000	59	54,000	63	10,000
1978	30.66	84,000	62	---	35	---
1979	15.80	72,000	57	77,000	63	(5,000)
1980	16.57	88,000	55	89,000	46	(1,000)
1981	13.39	97,000	46	75,000	47	22,000
1982	18.58	123,000	42	---	31	---
1983	33.21	---	35	95,000	42	---
1984	11.22	---	14	76,000	37	---
1985	12.20	106,000	37	82,000	41	24,000
1986	16.85	98,000	51	67,000	51	31,000
1987	11.29	83,000	48	71,000	52	12,000
1988	12.66	80,000	51	66,000	49	14,000
1989	12.22	59,000	47	47,000	57	12,000
1990	7.12	62,000	55	49,000	53	13,000
1991	13.18	62,000	52	55,000	54	7,000
1992	15.66	61,000	52	35,000	48	26,000
1993	20.17	72,000	54	52,000	61	20,000
1994	12.15	60,000	54	---	36	---
1995	25.87	87,000	35	74,000	52	13,000
1996	16.54	76,000	45	62,000	57	14,000
1997	20.50	---	20	91,000	48	---
1998	33.67	105,000	41	93,000	44	12,000
1999	12.98	106,000	56	88,000	49	18,000
2000	14.47	108,000	44	84,000	41	24,000
2001	21.62*	118,000	43	85,000	35	33,000
2002	10.25*	96,000	29	79,000	41	17,000
2003	11.39	94,000	37	66,000	42	28,000
2004	12.57	89,000	42	81,000	35	8,000
2005	22.23	98,000	38	79,000	39	19,000
2006	20.83	107,000	44	78,000	41	29,000
2007	7.11	93,000	44	66,000	42	27,000
2008	15.18	83,000	43	65,000	42	18,000
2009	10.31	76,000	44	65,000	43	11,000
2010	20.07	80,000	45	67,000	42	13,000
2011	34.05	87,000	43	81,000	43	6,000
2012	15.35	89,000	45	65,000	44	24,000
2013	8.07	67,000	45	42,000	43	25,000
2014	4.72	57,000	45	47,000	42	10,000
2015	8.09*	52,000	42	45,000	39	7,000

---: Insufficient for evaluation
 *: Preliminary value

1
 2

Table 1: GWI computed from Spring 1975 to Fall 2015.

t:\district projects\water resources mgmt\gwi index\20151230 tm31 spring and fall 2015 gwi.doc

TO: Michael LeBrun, GM NCSD
 RE: Spring and Fall 2015 GWI
 DATE: December 30, 2015
 Page 7 of 10

Spring and Fall Groundwater Index (GWI, Acre-Feet)

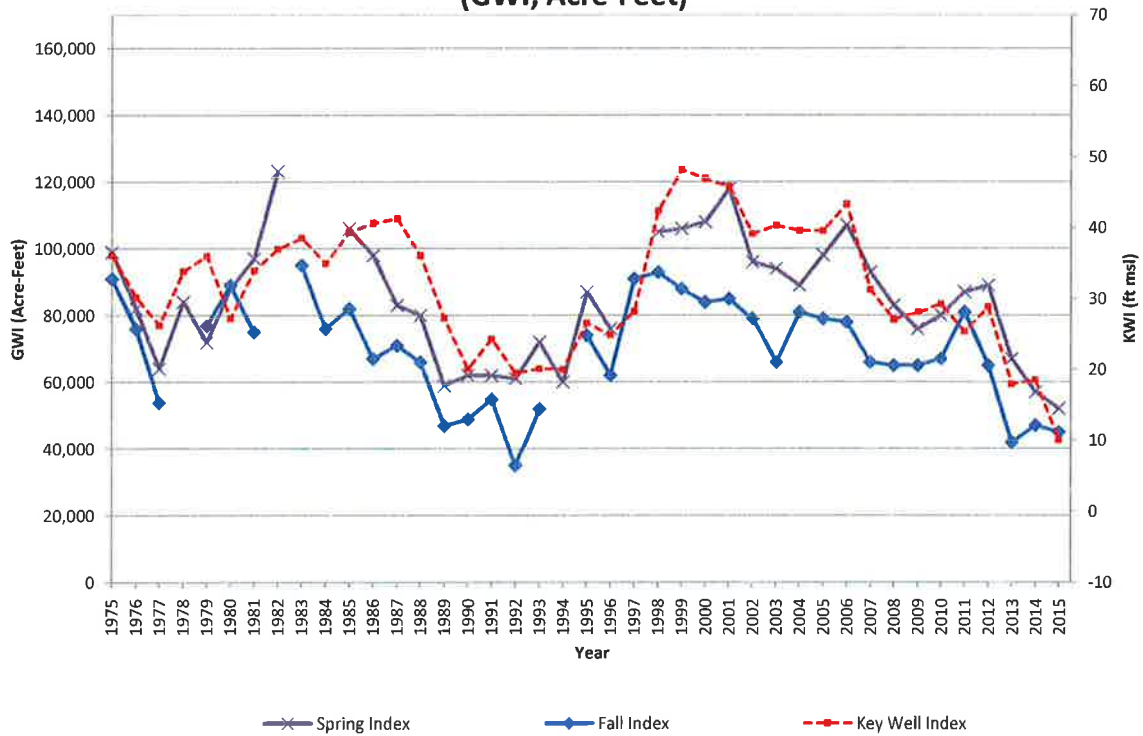


Figure 1: GWI and KWI from 1975 to present.

1
2
3
4

TO: Michael LeBrun, GM NCSD
 RE: Spring and Fall 2015 GWI
 DATE: December 30, 2015
 Page 8 of 10

Year	Spring GWI (AF)	Fall GWI (AF)	Rainfall (in)	CSDM Ave 16.32 (in)	CSDM Ave 16.32 (AF)	CU Prod (AF)	Deep Perc (from Rain (AF)	Total CU (AF)	Fin (AF)	Fout (AF)	Fin - Fout (AF)	Total Production (AF)
1975	90000	91000	17.29	17.29	27966.575	3340	2153	29153.575	110	1710	-1600	4420
1976	83000	76000	13.45	14.42	23324.35	3480	890	25914.35	220	1660	-1440	4610
1977	64000	54000	10.23	8.33	13473.775	3760	60	17173.775	400	1670	-1270	5040
1978	84000	77000	30.66	22.67	36668.725	3470	18814	21324.725	340	1610	-1270	4640
1979	72000	89000	15.80	22.15	35827.625	3800	2673	36954.625	410	1630	-1220	5110
1980	88000	75000	16.57	20.40	36232	3920	3241	36911	460	1700	-1240	5280
1981	91000	95000	13.89	19.47	31492.725	4050	1170	34372.725	600	1610	-1000	5590
1982	123000	76000	18.58	21.73	35148.275	4170	3380	35938.275	960	1630	-670	5480
1983	82000	82000	13.21	38.62	62467.85	4110	21564	45611.85	800	1570	-710	5630
1984	67000	67000	11.22	13.52	54218.6	4530	680	58108.6	790	1770	-980	6330
1985	106000	71000	12.20	29.40	47554.5	4640	850	51344.5	810	1720	-910	6420
1986	98000	66000	16.85	29.93	48411.775	5240	3210	50441.775	1030	1720	-690	7200
1987	83000	47000	11.29	24.90	40275.75	5520	790	45005.75	1210	1720	-510	7680
1988	80000	49000	12.66	21.24	34355.7	5640	1190	38805.7	1260	1690	-430	7860
1989	59000	55000	12.22	17.14	27723.95	5840	960	32603.95	1400	1710	-310	8180
1990	62000	35000	7.12	7.94	12842.95	6500	10	19332.95	1490	1710	-220	9230
1991	62000	52000	13.18	4.80	7764	6070	3097	10717	1600	1710	-110	8560
1992	61000	74000	15.66	4.14	6696.45	6070	4315	8451.45	1560	1690	-130	8530
1993	72000	62000	20.17	7.99	12923.825	5980	8895	10001.825	1700	1650	50	8430
1994	60000	91000	12.15	3.82	6178.85	6110	930	11358.85	1740	1670	70	8540
1995	87000	93000	25.87	13.37	21625.975	5860	15193	12292.975	1690	1590	100	8230
1996	76000	88000	16.54	13.59	21981.825	6260	5947	22294.825	1720	1590	130	8710
1997	86000	86000	20.50	17.77	24142.975	6380	11504	23598.975	1770	1530	240	8990
1998	105000	85000	13.67	35.12	56806.4	6640	2527	38189.6	1830	1470	360	9380
1999	106000	79000	12.98	31.78	51484.15	7250	1530	57114.15	1610	1530	80	10230
2000	108000	68000	21.62	17.08	59976.9	7420	2772	64624.9	1600	1610	-10	10530
2001	118000	81000	10.25	31.01	50158.675	7400	8387	49171.675	0	0	0	10570
2002	96000	79000	14.47	29.16	47166.3	7860	0	55026.3	0	0	0	11270
2003	94000	78000	11.39	24.23	39192.025	7630	890	45932.025	0	0	0	10980
2004	89000	66000	12.57	20.48	33126.4	7660	1570	39216.4	0	0	0	11020
2005	98000	65000	22.23	26.39	47685.825	7550	12401	37834.825	0	0	0	10950
2006	107000	65000	20.83	30.90	49980.75	7940	10968	46952.75	0	0	0	11480
2007	93000	67000	7.11	21.69	35083.575	8670	0	43753.575	1400	30	1370	12550
2008	83000	81000	15.18	20.55	33239.625	8290	5974	35555.625	0	0	0	12600
2009	76000	65000	10.31	14.54	23518.45	8580	130	31968.45	0	0	0	12210
2010	80000	67000	20.07	18.29	29584.075							10950
2011	87000	81000	34.05	36.02	58262.35							10538
2012	89000	65000	15.35	35.05	56693.375							11349
2013	67000	42000	8.07	26.80	43349							16349
2014	57000		5.75	16.23	26252.025							

Table 2: Hydrologic Inventory.

1
2
3

TO: Michael LeBrun, GM NCSD
 RE: Spring and Fall 2015 GWI
 DATE: December 30, 2015
 Page 9 of 10

Correlation Coefficients		
	<i>Spring GWI (AF)</i>	<i>Rainfall (inches)</i>
Spring GWI (AF)	1	
Rainfall (inches)	0.321931649	1
	<i>Spring GWI (AF)</i>	<i>CSDM_r Ave 16.32 (in)</i>
Spring GWI (AF)	1	
CSDM _r Ave 16.32 (in)	0.713615266	1
	<i>Spring GWI (AF)</i>	<i>CSDM_r - Total Production (AF)</i>
Spring GWI (AF)	1	
CSDM _r - Total Production (AF)	0.746482469	1
	<i>Spring GWI (AF)</i>	<i>CSDM_r - CU Prod (AF)</i>
Spring GWI (AF)	1	
CSDM _r - CU Prod (AF)	0.816018004	1
	<i>Spring GWI (AF)</i>	<i>CSDM_r + Net F (AF)</i>
Spring GWI (AF)	1	
CSDM _r + Net F (AF)	0.811533071	1
	<i>Spring GWI (AF)</i>	<i>CSDM_r - CU Prod + Net F (AF)</i>
Spring GWI (AF)	1	
CSDM _r - CU Prod + Net F (AF)	0.816884199	1

Table 3: Correlation Coefficients.

1
2
3

TO: Michael LeBrun, GM NCSD
RE: Spring and Fall 2015 GWI
DATE: December 30, 2015
Page 10 of 10

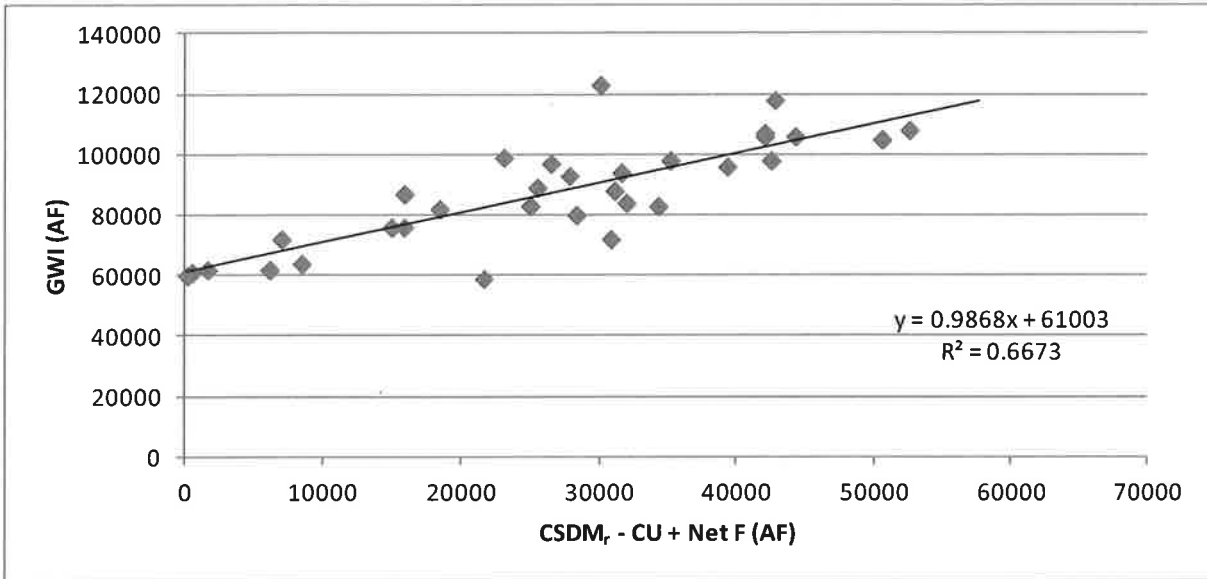


Figure 2: Scatter plot of GWI and CSDM_r - CU + Net F data from 1975 to 2009.

1
2
3

TO: BOARD OF DIRECTORS

FROM: MICHAEL S. LEBRUN *MSL*
GENERAL MANAGER

DATE: JANUARY 8, 2016

AGENDA ITEM

E-3

JANUARY 13, 2016

**APPROVE NEWTON GEO-HYDROLOGY
2016 CONSULTING SERVICES CONTRACT SCOPE AND BUDGET**

ITEM

Consider scope and budget for calendar year 2016 Newton Geo-Hydrology Consulting Services [RECOMMEND APPROVE SCOPE AND \$90,000 BUDGET FOR NEWTON GEO-HYDROLOGY CONSULTING SERVICES]

BACKGROUND

Dr. Brad Newton has provided litigation support services and general hydrologic consulting services to the District throughout the groundwater adjudication process. Dr. Newton represents the District on the Nipomo Mesa Management Area Technical Group.

The contracts for Dr. Newton's services are reviewed by your Board each calendar year. The attached scopes of work from Newton Geo-Hydrology present the proposed scope of services and budget for 2016.

The proposal covers two tasks, General Consultation (not to exceed limit of \$10,000) and Santa Maria Groundwater Adjudication support (not to exceed limit of \$80,000).

FISCAL IMPACT

The approved FY 15-16 Budget includes funding for six months of Dr. Newton's services. The remaining six months of services will be included in the FY 16-17 Budget.

STRATEGIC PLAN

Goal 1. WATER SUPPLIES. Actively plan to provide reliable water supply of sufficient quality and quantity to serve both current customers and those in the long-term future.

- 1.6 Continue to monitor and participate in water supply issues and programs with other local and regional organizations

RECOMMENDATION

Staff recommends the Board of Directors by motion and roll-call vote, approve the 2016 Support Services Contract with Newton Geo-Hydrology Consulting Services, LLC for a not to exceed amount of \$90,000.00 and direct staff to issue Task Order 2016-1 in the amount of \$10,000 and Task Order 2016-2 in the amount of \$80,000.

ATTACHMENTS

- A. Newton Geo-Hydrology Consulting Services, LLC 2016 Task Orders and Exhibits

January 13, 2016

ITEM E-3

ATTACHMENT A

ATTACHMENT #1 To EXHIBIT "A"

**to
AGREEMENT FOR PROFESSIONAL SERVICES**

**Between
NIPOMO COMMUNITY SERVICES DISTRICT
and
NEWTON GEO-HYDROGEOLOGY CONSULTING SERVICES, LLC**

January 01, 2016

"REQUEST FOR SERVICES – TASK ORDER # 2016-1

AUTHORIZATION FOR SERVICES:

At the request of the Nipomo Community Services District, Engineer Consultant is to provide services as described herein. The terms and conditions of the Agreement for Professional Engineering Services, dated January 01, 2016 are incorporated herein by this reference. The scope of services requested along with the schedule and fees for said services are set forth below as follows:

SCOPE OF SERVICES REQUESTED (Additional information may be attached as an Exhibit.):

General consultation as further described in the January 2016 Proposal for Services attached as Exhibit A.

TIME FOR PERFORMANCE (Additional information may be attached as an Exhibit.):

Continuing

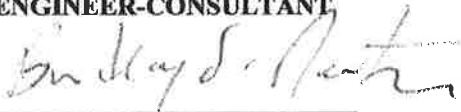
ENGINEERING FEES:

The Engineering fees for these services is not to exceed \$10,000.

NIPOMO COMMUNITY SERVICES

ENGINEER-CONSULTANT

**Approved By: Mario Iglesias
Title: General Manager
Date: January __, 2016**



**Approved By: Dr. Brad Newton
Title: Principal
Date: January 1, 2016**



Newton Geo-Hydrology Consulting Services, LLC

Exhibit A for Task Order # 2016-1

Task Order #2016-1, General Consultation, is to allow for Newton Geo-Hydrology Consulting Services (Consultant) to provide the following services, on an as-requested basis, that are not included within the scope of other Task Orders. Such services include Part A and Part B as follows:

- A. Preparation of Spring and Fall Ground Water Index (GWI) technical memoranda and presentation thereof to the District Board of Directors. It is understood that reports will, in whole or in part, be based on confidential information obtained in confidence from landowners related to private wells, (see specifically Section 26 of the Agreement related to confidential information). The estimated cost for the GWI technical memorandum and presentation at NCSD Board of Directors meeting under Task Order #2016-1 Part A is eight thousand (\$8,000) dollars, which accounts for forty (40) hours of Dr. Newton's efforts plus budget for travel, plus materials and other direct costs.
- B. Preparation of other technical memorandums at the request of either the General Manager or the District Board of Directors. The estimated budget for other technical memorandums under Task Order #2016-1 Part B is two thousand dollars (\$2,000).

Budget

The total budget for Task Order #2016-1 Parts A and B, through December 31, 2016, is ten thousand (\$10,000) dollars to be billed on a time and material basis in accordance with the Agreement.

ATTACHMENT #1 To EXHIBIT "A"

**to
AGREEMENT FOR PROFESSIONAL SERVICES**

**Between
NIPOMO COMMUNITY SERVICES DISTRICT
and
NEWTON GEO-HYDROGEOLOGY CONSULTING SERVICES, LLC**

January 01, 2016

"REQUEST FOR SERVICES -- TASK ORDER # 2016-2

AUTHORIZATION FOR SERVICES:

At the request of the Nipomo Community Services District, Engineer Consultant is to provide services as described herein. The terms and conditions of the Agreement for Professional Engineering Services, dated January 01, 2016 are incorporated herein by this reference. The scope of services requested along with the schedule and fees for said services are set forth below as follows:

SCOPE OF SERVICES REQUESTED (Additional information may be attached as an Exhibit.):

General consultation related to Santa Maria Groundwater Adjudication as further described in the January 2016 Proposal for Services attached as Exhibit A.

TIME FOR PERFORMANCE (Additional information may be attached as an Exhibit.):

Continuing


ENGINEERING FEES:

The Engineering fees for these services is not to exceed \$80,000.

NIPOMO COMMUNITY SERVICES

Approved By: Mario Iglesias
Title: General Manager
Date: January __, 2016

ENGINEER-CONSULTANT



Approved By: Dr. Brad Newton
Title: Principal
Date: January 1, 2016



Newton Geo-Hydrology Consulting Services, LLC

Exhibit A for Task Order # 2016-2

Task Order # 2016-2 is to allow for Newton Geo-Hydrology Consulting Services (Consultant) to provide the following litigation support services related to the Groundwater Adjudication presented in Part A through Part D as follows:

- A. Preparation for, travel, and attendance/participation at Nipomo Mesa Management Area (NMMA) Technical Group (TG) regular monthly meetings. The estimated cost for each of NMMA TG fourteen (14) regular meetings under Task Order # 2016-2 is three thousand (\$3,000) dollars, which accounts for fourteen (14) hours of Dr. Newton's efforts plus budget for travel, plus materials and other direct costs. The estimated budget for Task Order # 2016-2 Part A is forty-two thousand dollars (\$42,000).
- B. Preparation for, travel, and attendance/participation at Management Areas (MAs) Subcommittee ad hoc meetings, including meetings with the NCMA and SMVMA representatives. The estimated cost for each of MAs Subcommittee four (4) regular meetings under Task Order # 2016-2 is one thousand five hundred (\$1,500) dollars, which accounts for six (6) hours of Dr. Newton's efforts plus budget for travel. The estimated budget for Task Order # 2016-2 Part B is six thousand dollars (\$6,000).
- C. Preparation of the Annual Report to the Court pursuant to the Final Judgment of the Santa Maria Groundwater Litigation. The estimated budget for Task Order # 2016-2 Part C, which accounts for one hundred seventy (170) hours of Dr. Newton's efforts plus budget for travel, plus materials and other direct costs, is thirty-two thousand dollars (\$32,000).
- D. Preparation of reports and technical memorandums related to NMMA TG functions with the prior approval of either the District General Manager or District Legal Counsel, and other opinions requested by District Legal Counsel. It is understood that reports will, in whole or in part, be based on confidential information obtained in confidence from landowners related to private wells. The estimated budget for Task Order # 2016-2 Part D is unknowable in advance of a specific scope and schedule for said reports, technical memorandums, or other opinions.

Budget

The total budget for Task Order # 2016-2 Part A, Part B, and Part C through December 31, 2016, is eighty thousand (\$80,000) dollars to be billed on a time and material basis in accordance with the Agreement.