

TO: BOARD OF DIRECTORS

FROM: MICHAEL S. LEBRUN *MSL*
GENERAL MANAGER

DATE: JULY 18, 2014

AGENDA ITEM

C

JULY 23, 2014

PRESENTATIONS AND REPORTS

The following presentations and reports are scheduled:

- C-1) CAL FIRE BATTALION CHIEF PAUL VAN GERWEN
Update Report re: South County Cal Fire Activity and Department News
- C-2) REPORT ON JULY 9, 2014 REGULAR MEETING CLOSED SESSION
Announcement of actions, if any, taken in Closed Session
- C-3) DIRECTOR OF ENGINEERING AND OPERATIONS
Summary of recent activities
- C-4) DIRECTORS' ANNOUNCEMENTS OF DISTRICT & COMMUNITY INTEREST AND
REPORTS ON ATTENDANCE AT PUBLIC MEETINGS, TRAINING PROGRAMS,
CONFERENCES, AND SEMINARS.
Receive Announcements and Reports from Directors
- C-5) RECEIVE PUBLIC COMMENT ON PRESENTATIONS AND REPORTS
PRESENTED UNDER ITEM C AND BY MOTION RECEIVE AND FILE
PRESENTATIONS AND REPORTS

TO: BOARD OF DIRECTORS
FROM: MICHAEL S. LEBRUN
GENERAL MANAGER
DATE: JULY 18, 2014

AGENDA ITEM
C-2
JULY 23, 2014

**JULY 9, 2014 REGULAR MEETING
CLOSED SESSION REPORT**

ITEM

Announcement of actions, if any, taken during Closed Session at previous Board Meeting [NO ACTION REQUESTED]

BACKGROUND

The July 9, 2014 Regular Meeting Closed Session included:

1. CONFERENCE WITH DISTRICT LEGAL COUNSEL RE: PENDING LITIGATION PURSUANT TO GC §54956.9
 - a) SMVWCD VS. NCSD (SANTA CLARA COUNTY CASE NO. CV 770214, SIXTH APPELLATE COURT CASE NO. H032750 AND ALL CONSOLIDATED CASES)
 - b) NCSD v Troesh et. al. SLOCSC# CV130175
 - c) NCSD v County SLOCSC #CV090010
 - d) NCSD v DeGroot SLOCSC #CV070066
2. CONFERENCE WITH LEGAL COUNSEL: LIABILITY CLAIM PURSUANT TO SECTION 54956.95:
Claimant: Specialty Construction
Agency: NCSD
3. ANNUAL PERFORMANCE REVIEW OF DISTRICT GENERAL MANAGER PURSUANT TO GOVERNMENT CODE SECTION 54957

Staff will report on closed session action taken, if any.

TO: BOARD OF DIRECTORS

FROM: MICHAEL S. LEBRUN
GENERAL MANAGER

DATE: JULY 18, 2014

AGENDA ITEM

C-3

JULY 23, 2014

DISTRICT DIRECTOR OF ENGINEERING AND OPERATIONS SUMMARY OF ACTIVITIES

ITEM

Report on recent engineering and operations activities [NO ACTION REQUESTED].

BACKGROUND

Director of Engineering and Operations, Peter Sevcik, will summarize his written report on District capital projects and operations.

RECOMMENDATION

Staff recommends that your Honorable Board receive the update.

ATTACHMENTS

- A. Engineering and Operations Update

JULY 23, 2014

ITEM C-3

ATTACHMENT A



NIPOMO COMMUNITY SERVICES DISTRICT

148 SOUTH WILSON STREET
POST OFFICE BOX 326
NIPOMO, CA 93444 - 0326
(805) 929-1133 FAX (805) 929-1932
Web site address www.ncsd.ca.gov

MEMORANDUM

TO: MICHAEL S. LEBRUN, P.E., GENERAL MANAGER *MSL*
FROM: PETER V. SEVCIK, P.E., DIRECTOR OF ENGINEERING & OPERATIONS
DATE: JULY 18, 2014
RE: ENGINEERING AND OPERATIONS UPDATE FOR JUNE 2014

PROJECTS IN CONSTRUCTION

- **Southland WWTF Phase 1 Improvement Project**
 - STATUS
 - Scheduled Contract Completion – September 4, 2014
 - Time Elapsed to Date – 91% (695 of 765 days)
 - Work Completed to Date – 99% (Based on approved pay requests)
 - New plant on-line as of March 5, 2014
 - Correction of punch list items and final change order work in progress

Construction Contract Cost Summary	
Original Contract Amount – Cushman Construction Co.	\$10,224,900
Change Order for Alternate Y, Additional Disposal Ponds	\$867,900
Other Change Orders to Date	\$431,055
Revised Contract Amount	\$11,523,855
Completed to Date	\$11,509,525

Summary of Plant Performance Test

Date	Week	INFLUENT			AERATION BASIN	EFFLUENT			
		5-day BOD	Suspended Solids	TKN	Suspended Solids	5-day BOD	Suspended Solids	Settleable Solids	Nitrogen
3/11/2014	1	320	300	63	408	15	17	0.1	35
3/18/2014	2	567	596	70	690	7	9	0.1	41
3/25/2014	3	318	480	64	1070	8	12	0.1	27
4/1/2014	4	334	280	66	304	6	4	0.1	39
4/8/2014	5	384	433	65	1640	4	6	0.1	36
4/15/2014	6	394	371	60	1213	5	8	0.1	13
4/22/2014	7	392	305	65	2530	3	7	0.1	7
4/29/2014	8	373	264	57	2756	3	8	0.1	10
5/6/2014	9	325	324	64	2347	3	7	0.1	16
5/13/2014	10	295	491	55	2282	5	13	0.1	21
5/20/2014	11	660	663	62	2480	3	5	0.1	19
5/27/2014	12	600	680	55	2260	3	6	0.1	12
6/3/2014	13	515	700	68	2627	3	6	0.1	16
6/10/2014	14	570	555	52	2788	3	5	0.1	13
6/17/2014	15	557	614	52	2492	3	5	0.1	9
6/24/2014	16	490	573	62	2485	6	6	0.1	8

- **Supplemental Water Project Phase 1 Bid Package 4 – Joshua Road Pump Station**

- SCOPE OF WORK – 1930 lineal feet of 24-inch diameter waterline, 400 gpm pump station with back-up power, controls, and instrumentation systems, a pressure reducing station and chloramination systems at 4 existing District wells. Work also includes Blosser Road flow control and metering station.
- STATUS
 - Scheduled Contract Completion – May 22, 2015
 - Time Elapsed to Date – 36% (188 of 519 days)
 - Work Completed to Date – 12% (Based on approved pay requests)

SWP Bid Package 4 Construction Contract Cost Summary	
Contract Amount – Spiess Construction Co. Inc.	\$4,364,030
Change Orders	\$529,670
Revised Contract Amount	\$4,893,700
Completed to Date	\$583,132

Joshua Road Pump Station
July 8, 2014



- **Standpipe Tank Rehabilitation and Inlet Modification Project**

- SCOPE OF WORK - Piping for new inlet and new inlet connection, modification of existing tank inlet/outlet piping, removal and replacement of existing drain/overflow valves, new cathodic protection system, and interior tank coating.
- STATUS
 - Scheduled Contract Completion - August 11, 2014
 - Tank commissioning in progress

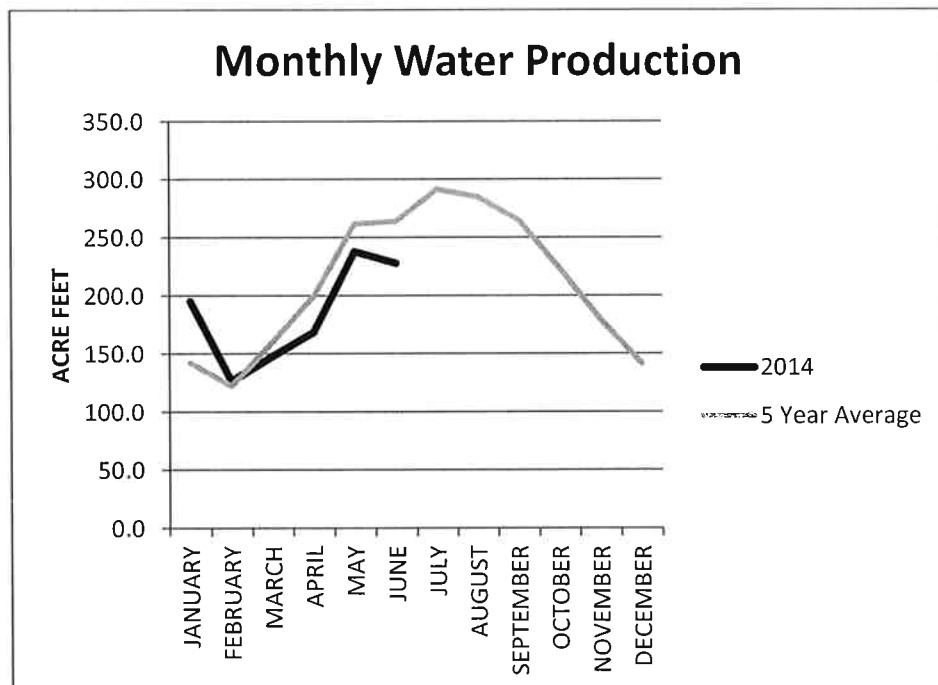
Construction Contract Cost Summary	
Contract Amount – Crosno Construction, Inc.	\$263,350
Change Orders	\$18,087
Revised Contract Amount	\$281,437
Completed to Date	\$240,497

OPERATIONS

- **Wells and Water Distribution System – June 2014**

<u>YEAR</u>	<u>TOTAL MONTHLY PRODUCTION</u>	<u>AVERAGE DAILY PRODUCTION</u>
2014	227.6 Acre Feet	7.6 Acre Feet Per Day
5 Year Average	263.6 Acre Feet	8.8 Acre Feet Per Day

- Daily maintenance and operation of 8 wells
- 16 distribution system routine coliform monitoring samples
- 30 distribution system disinfectant residual monitoring samples
- Eureka Well out of service for repairs
 - Existing well casing is deteriorated
 - Will reinstall pump on temporary basis
 - Replacement well needs to be drilled



• **Southland Wastewater Treatment Facility and Collection System – June 2014**

<u>TOTAL EFFLUENT TREATED</u>	<u>AVERAGE DAILY FLOW TREATED</u>	<u>BOD₅</u>	<u>TSS</u>
18.0 Million Gallons	.599 Million Gallons Per Day	4 mg/l Monthly Average	5 mg/l Monthly Average
55.2 Acre Feet	1.8 Acre Feet Per Day	5 mg/l Daily Maximum	7 mg/l Daily Maximum

- Daily maintenance and operation of upgraded .9 MGD treatment plant and 10 lift stations
- No sewer system overflows
- Effluent biochemical oxygen demand (BOD) requirement for monthly average of 60mg/L met and daily maximum of 100 mg/L requirement met
- Effluent total suspended solids (TSS) requirement for monthly average of 60mg/L met and daily maximum of 100 mg/L requirement met
- 8 Each Influent BOD, TSS samples
- 8 Each Effluent BOD, TSS samples
- 30 Effluent Settleable Solids samples
- 30 Each Effluent pH, dissolved oxygen samples

• **Blacklake Wastewater Reclamation Facility and Collection System – June 2014**

<u>TOTAL EFFLUENT TREATED</u>	<u>AVERAGE DAILY FLOW TREATED</u>	<u>BOD₅</u>	<u>TSS</u>
1.1 Million Gallons	.037 Million Gallons Per Day	40 mg/l Monthly Average	13 mg/l Monthly Average
3.4 Acre Feet	.11 Acre Feet Per Day	44 mg/l Daily Maximum	19 mg/l Daily Maximum

- Daily maintenance and operation of .2 MGD treatment plant and 3 lift stations
- Effluent biochemical oxygen demand (BOD) requirement for monthly average of 40 mg/L met and daily maximum 100 mg/L requirement met
- Effluent total suspended solids (TSS) requirement for monthly average of 30 mg/L met and daily maximum of 100 mg/L requirement met
- No sewer system overflows
- 4 Each Effluent BOD, TSS samples
- 21 Each Effluent total coliform, settleable solids, pH, Chlorine residual, dissolved oxygen samples

• **Compliance Reporting**

- June Monthly Distribution System Coliform Monitoring Summary to California Department of Public Health
- June 2014 UCMR3 sampling completed except for Eureka Well
- May Wastewater Monitoring Report for the Blacklake Wastewater Reclamation Facility to Central Coast Regional Water Quality Control Board
- May Monthly Wastewater Monitoring Report for the Southland Wastewater Treatment Facility to Central Coast Regional Water Quality Control Board
- May Monthly 'No-Spill' Certification for California Integrated Water Quality System (CIWQS) for both Southland and Blacklake Sewer Collection Systems
- Environmental Laboratory Accreditation Program (ELAP) certificate renewed until May 2016 pending on-site inspection

PROJECTS IN DESIGN AND PLANNING STAGES

- **Supplemental Water Project Phase 1 – Blosser Road Water Main**
 - SCOPE OF WORK – 5970 lineal feet of 24-inch diameter waterline including 300 lineal feet levee crossing jack and bore
 - STATUS
 - Bid advertisement pending
 - Tentative schedule
 - Advertise for Bid – July 2014
 - Contract Award – August 2014
 - Construction September 2014 – December 2014
- **Blacklake Wastewater Master Plan**
 - Technical evaluation of existing wastewater plant and sewer collection system in progress
 - Treatment plant operations and maintenance manual update is being finalized

OTHER PROJECTS AND PROGRAMS

- **Safety Program**
 - Weekly operations tailgate safety meeting for Operations staff
 - On-line safety training for all District employees
- **Development Review**
 - Intent to Serve Application Received – 6
 - Will Serve Letter Issued – 0

ATTACHMENTS

- A. June 2014 Supplemental Water Project Phase 1 Bid Package 4 Monthly Construction Progress Report

Nipomo Community Services District



Supplemental Water Project Bid Package 4

Monthly Progress Report



Prepared By:
MNS Engineers, Inc.

June 2014

Schedule and Budget Summary

Schedule Summary

Notice to Proceed	December 19, 2013
Original Contract Days	519
Contract Days Added	0
Revised Contract Days	0
Elapsed Time (Days)	(188)
Remaining Time (Days)	331
Contract Completion Date	May 22, 2015
Time Elapsed to Date	36%
Work Completed to Date	12%
Approved Change Orders (Days)	0 days

Budget Summary

Original Contract Amount	\$4,364,030.00
Approved Change Orders (Cost)	\$529,670.00
Revised Contract Amount	\$4,893,700.00
Previous Payments	\$253,435.00
Current Month Pay Request	\$329,696.80
Total Work Completed	\$583,131.80
Work Remaining	\$4,310,568.20

Progress Summary

Joshua Pump Station Site

Summary of Work:

Spiess completed pouring encasements around the pump cans, then stripped forms and removed enough shoring to begin installation of the 16-inch coated steel suction pipe, manifold and valves. Suction pipe was installed, pressure tested, then joints wrapped in wax tape and plastic. Spiess also took delivery of additional coated pipe and 24-inch ductile iron pipe.

Pictures:



Stripping forms after first pour of encasements around pump cans.



Forms stripped from around first encasement pour at pump cans.



Spiess installing forms for pouring encasements at around the last two pump cans.



Spiess pouring last two pump can encasements.



Stripping forms from second pump can encasement pour.



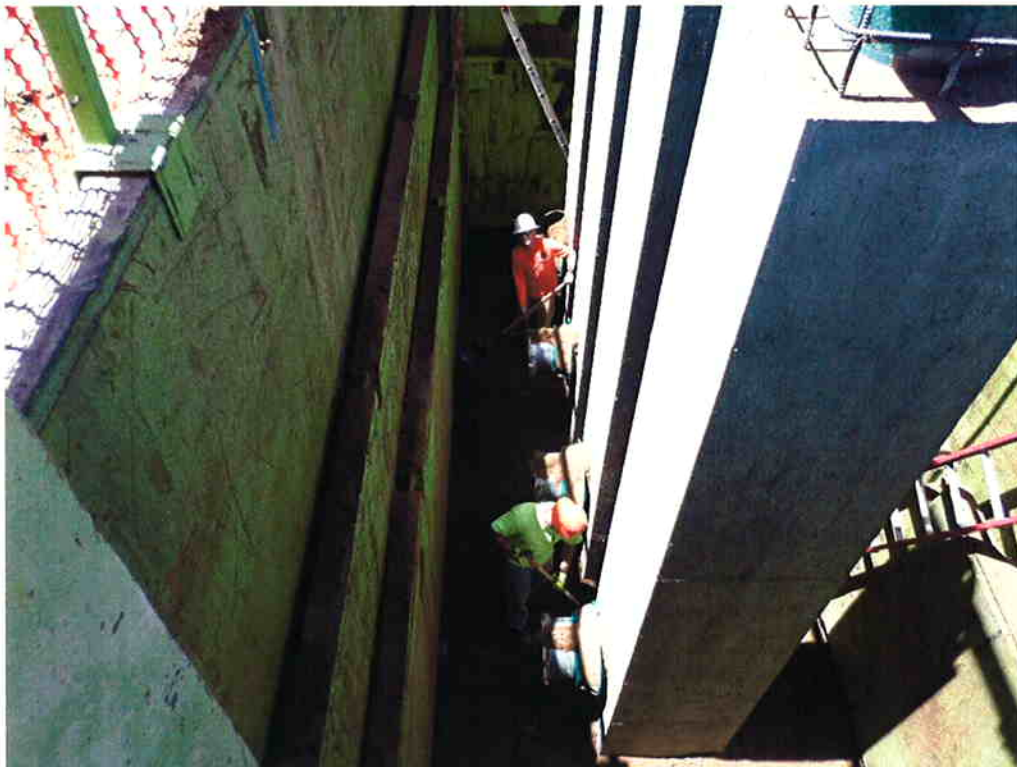
Spiess backfilling around concrete encased pump cans in order to remove some of the shoring before work on the suction pipes.



Spiess working on excavation to connect to the Bid Package #1 pipe.



Spiess raising slip shoring from around the pump cans with the excavator.



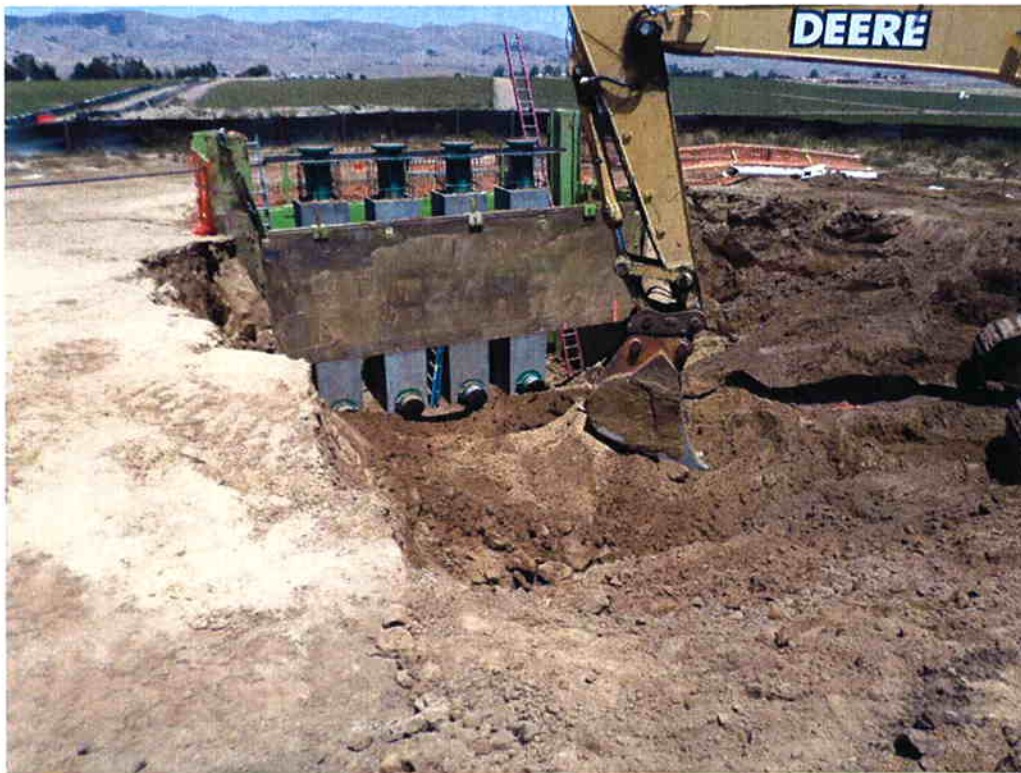
Spiess spreading native material backfill around the base of the pump cans.



Spiess spreading native material backfill around the base of the pump cans.



Spiess excavating and cutting back sides for installation of the suction piping and manifold.



Spiess continuing work on the open cut for installation of the suction pipe and manifold.



Compacting subgrade under future suction piping.



Spiess starting installation of 16-inch coated steel suction piping.



Installing suction piping.



Spiess installing 16-inch coated steel suction piping and fittings.



Spiess installing 16-inch valves.



Spiess installing 24-inch manifold onto 16-inch valves.



Spiess wrapping joints with wax tape and plastic on suction pipe.



Spiess wrapping joints with wax tape and plastic on suction pipe.



Spiess installing 24-inch valve on suction pipe.



Spieß taking delivery of more coated steel pipe.



Delivery of 24-inch ductile iron pipe.



Spiess coating rebar for valve anchors.

Sundale Well Site

Summary of Work:

Spiess formed the Chemical Building slab, installing floor drains and underslab piping, and Vista Steel installed the reinforcing. Spiess also completed site piping.

Pictures:



Spiess excavating to install plant water pipe.



Spiess installing 2-inch PVC conduit for chemical tubing.



Spiess backfilling and placing tape over chemical tubing pipe.



Spiess installing 4-inch PVC drain piping under the Chemical Building slab.



Spiess installing 1/2-inch PVC plant water line and 2-inch PVC chemical tubing line.



Spiess compacting base material for the Chemical Building slab.



Spiess installing forms for the Chemical Building slab.



Spiess placing underslab vapor barrier at Chemical Building slab.



Vista Steel installing reinforcing at Chemical Building.



Vista Steel finishing installation of reinforcement at Chemical Building slab.