

TO: BOARD OF DIRECTORS

FROM: MICHAEL S. LEBRUN *MSL*
GENERAL MANAGER

DATE: APRIL 3, 2015

AGENDA ITEM

F

APRIL 8, 2015

GENERAL MANAGER'S REPORT

ITEM

Standing report to your Honorable Board -- *Period covered by this report is March 6, 2015 through April 3, 2015.*

DISTRICT BUSINESS

Administrative

- Nipomo area groundwater is in a *potentially severe* water shortage condition as defined by the court appointed group that monitors basin health. The District is in Stage II (2) shortage conditions as defined by our Water Shortage Response and Management Plan.
- In April, the County will measure levels in over 200 water wells across the Mesa. The District will receive the data by mid-May and convey it to the Technical Group for analysis and development of the Key Wells Index for 2015. The Index has hovered just above severe criterion since 2013. If the Index drops into severe criterion, it would trigger a Stage III Water Shortage level for the District.
- The District uses an active education and outreach program and escalating block water pricing to encourage water conservation. District water rates are set such that water in the highest block cost 300% more than in the lowest. By design, these escalating prices *reward* conservation and *penalize* water waste. The District approach to conservation is both frugal and effective.
- Construction of the District's supplemental water pipeline is progressing on schedule. Initial water deliveries are expected in July 2015. The District is preparing for a change over in water disinfection practices that will be undertaken as part of bringing in the new supply.
- Drought conditions prevail throughout our County, region, and State. The Nipomo area received no rain during the past two-weeks and the likelihood of significant rains before next fall/winter is very low. Both of the County-maintained local rain gauges have measured less than 50% of their long term seasonal average this winter. This marks the third year of significantly below average rainfall for our area.
- On March 6, the District received notice that the Government Finance Officers Association awarded the District a Certificate of Achievement for Excellence in Financial Reporting (Attached).
- On March 13, staff conveyed the Board's nomination of Director Blair for CSDA Coastal Network Seat A (Attached).
- On March 13, staff attended a presentation on the Sustainable Groundwater Management Act (Materials Attached)

- On March 16, Director of Engineering and Operation Peter Sevcik co-presented a paper at the North American Society of Trenchless Technology's "No-Dig Show". The paper (Attached) overviewed the District's pipeline under-crossing of the Santa Maria river.
- On March 19, the District sent a letter confirming Woodlands Mutual Water Company's participation in the Nipomo Supplemental Water Project (Attached)
- On Sunday March 22, the District staffed a booth at the Saint Joseph Festival and provided information on District services and water conservation.
- On March 31, D-Kal Engineering completed construction of the Blosser Road Water Main. This water main is an integral component of the District's Supplemental Water Project.

Public Outreach

The following Public Outreach Program materials are provided as Attachment B:

- A summary of outreach and education activities
- Press release log
- District related news coverage
- District website and social media traffic summary

Safety Program

No accidents, incidents, or injuries to report.

Connection Report

No new water or sewer connections have been added this year. Over the past ten years, the District has averaged approximately 35 water and 39 sewer connections annually.

Nipomo Community Services District
 Water and Sewer Connections

END OF MONTH CONNECTION REPORT

	AUG-14	SEPT-14	OCT-14	Nov-14	DEC-14	JAN-15	FEB-15	MAR-15
Water Connections (Total)	4321	4322	4322	4324	4325	4325	4325	4325
Sewer Connections (Total)	3112	3112	3112	3112	3112	3112	3112	3112
Meters turned off (Non-payment)	25	15	22	13	41	13	24	13
Meters off (Vacant)	45	42	41	40	41	44	39	42
Sewer Connections off (Vacant)	16	13	13	12	13	15	11	14
New Water Connections	2	1	0	2	1	0	0	0
New Sewer Connection	1	0	0	0	0	0	0	0
Galaxy & PSHH at Orchard and Division Sewer Connections billed to the County	464	464	464	468	468	468	468	468

NEXT PAGE

Fire Hydrant Metered Use

The District provides limited water sales via metered fire hydrant for construction and other in-District requests and local county projects. Project specific hydrant meters are set upon request and a hydrant located adjacent to the District office is outfitted with a meter for common use.

During the month of February, three project specific hydrants were in service. A combined total of 46 units of water was sold with 44 units going to Spiess Construction in support of supplemental water construction. Additionally, 11 units of water (~8,000 gallons) were utilized at the common hydrant meter for County projects, including street sweeping and construction of the park and ride facility.

Other Items and News of Interest

The following are included as attachments to this Report:

- Santa Barbara County water agency rate comparison

Meetings

Meetings Attended (telephonically or in person):

- *March 10, Golden State Water Company*
- *March 10, Development interests*
- *March 11, Regular Board Meeting*
- *March 11, Annual IT review*
- *March 11, Panel Discussion, League of Women Voters*
- *March 12 & 20, Management Coordination*
- *March 13, Groundwater Management Act presentation*
- *March 16, WMWC General Manager*
- *March 16, Finance and Audit Committee*
- *March 16, Board Officers*
- *March 17, Rate Consultant*
- *March 18, NMMA Technical Group*
- *March 19, NMMA Purveyors*
- *March 30, Director of Engineering and Operations*
- *March 30, Board Officers*
- *March 31, General Counsel*
- *March 31, GSWC*
- *April 1, SLO County Regional Water Management Group*
- *April 2, Public Information Director*
- *April 2, Blacklake Developer*

Meetings Scheduled:

- *April 6, Rate Consultant*
- *April 7, LMD Landscaper*
- *April 8, Regular Board Meeting*

- *April 10, SLO County Public Works Director*
- *April 12, NMMA Technical Group*
- *April 12, Pismo Beach Recycled Water Plan presentation*
- *April 14, SLO County Supervisors, Groundwater Export Ordinance*
- *April 14, GSWC*
- *April 14, Management Coordination*
- *April 15, Public Information Director*
- *April 15, Finance and Audit Committee*
- *April 15, Board Officers*
- *April 16, ASCE Luncheon at Southland WWTP*
- *April 16, Director of Engineering and Operations*
- *April 17, NCMA/NMMA/SLO County PW*

RECOMMENDATION

Staff seeks direction and input from your Honorable Board

ATTACHMENTS

- A. GFOA Press Release
- B. CSDA Nomination
- C. Groundwater Act Overview
- D. NASTT Paper
- E. March 17 District Letter
- F. Outreach Program Summary Materials
- G. Santa Barbara County Rate Summary

April 8, 2015

F

ATTACHMENT A



Government Finance Officers Association
203 N. LaSalle Street - Suite 2700
Chicago, IL 60601

Phone (312) 977-9700 Fax (312) 977-4806

03/06/2015

NEWS RELEASE

For Information contact:
Stephen Gauthier (312) 977-9700

(Chicago)--The Certificate of Achievement for Excellence in Financial Reporting has been awarded to **Nipomo Community Services District** by the Government Finance Officers Association of the United States and Canada (GFOA) for its comprehensive annual financial report (CAFR). The Certificate of Achievement is the highest form of recognition in the area of governmental accounting and financial reporting, and its attainment represents a significant accomplishment by a government and its management

An Award of Financial Reporting Achievement has been awarded to the individual(s), department or agency designated by the government as primarily responsible for preparing the award-winning CAFR. This has been presented to:

Lisa Bognuda, Finance Director

The CAFR has been judged by an impartial panel to meet the high standards of the program including demonstrating a constructive "spirit of full disclosure" to clearly communicate its financial story and motivate potential users and user groups to read the CAFR.

The GFOA is a nonprofit professional association serving approximately 17,500 government finance professionals with offices in Chicago, IL, and Washington, D.C.



Government Finance Officers Association
203 N. LaSalle Street - Suite 2700
Chicago, IL 60601

Phone (312) 977-9700 Fax (312) 977-4806

March 6, 2015

Craig Armstrong
President
Nipomo Community Services District
PO Box 326
Nipomo CA 93444-0326

Dear Mr. Armstrong:

We are pleased to notify you that your comprehensive annual financial report for the fiscal year ended **June 30, 2014** qualifies for a Certificate of Achievement for Excellence in Financial Reporting. The Certificate of Achievement is the highest form of recognition in governmental accounting and financial reporting, and its attainment represents a significant accomplishment by a government and its management.

An award for the Certificate of Achievement has been shipped to:

Lisa Bognuda
Finance Director

We hope that you will arrange for a formal presentation of the Certificate and Award of Financial Reporting Achievement, and that appropriate publicity will be given to this notable achievement. A sample news release is enclosed to assist with this effort. In addition, details of recent recipients of the Certificate of Achievement and other information about Certificate Program results are available in the "Awards Program" area of our website, www.gfoa.org.

We hope that your example will encourage other government officials in their efforts to achieve and maintain an appropriate standard of excellence in financial reporting.

Sincerely,
Government Finance Officers Association

Stephen J. Gauthier, Director

Technical Services Center

SJG/ds

April 8, 2015

F

ATTACHMENT B



California Special
Districts Association
Districts Stronger Together

BOARD OF DIRECTORS NOMINATION FORM

Name of Candidate: Director Bob Blair

District: Nipomo CSID

Mailing Address: 148 South Wilson, Nipomo
93444

Network: Coastal (see map on back)

Telephone: _____
(PLEASE BE SURE THE

(CANDIDATE)

Fax: _____

E-mail: eba

DM

Nominated by (optional): Board President Craig Armstrong

Return this form and a Board resolution/minute action supporting the candidate and Candidate Information Sheet by fax or mail to:

CSDA
Attn: Charlotte Lowe
1112 I Street, Suite 200
Sacramento, CA 95814
(877) 924-2732 (916) 442-7889 fax

DEADLINE FOR RECEIVING NOMINATIONS – May 22, 2015



California Special
Districts Association
Districts Stronger Together

CSDA BOARD CANDIDATE INFORMATION SHEET

The following information **MUST** accompany your nomination form and Resolution/minute order:

Name: Dr. Robert L. "Bob" Blair
District/Company: Nipomo Community Services District
Title: Director
Elected/Appointed/Staff: Elected
Length of Service with District: 1994 - 2004, 2012 - present

1. Do you have current involvement with CSDA (such as committees, events, workshops, conferences, Governance Academy, etc.):

Regular attendance at SLO County Chapter meetings,
Attended 2013 and 2014 SDDL, Attended 2014 CSDA
Annual Mtg.

2. Have you ever been associated with any other state-wide associations (CSAC, ACWA, League, etc.):

Served on CSDA Board 2002-2004, member
CA Sheriff's Association

3. List local government involvement (such as LAFCo, Association of Governments, etc.):

4. List civic organization involvement:

Nipomo Chamber of Commerce, SLO County
Sheriffs Association, SLO County CSDA chapter,
CA Sheriffs Association

****Candidate Statement** – Although it is not required, each candidate is requested to submit a candidate statement of no more than 300 words in length. **Any statements received in the CSDA office after June 4, 2015 will not be included with the ballot mailing.**



Hello!

My Name is Dr. Robert L. "Bob" Blair,

I am one of the candidates running for Seat A in the Coastal Network of the California Special Districts Association.

Why should you elect me over the other aspiring CSDA Candidates?

1. I have prior experience. I served on the CSDA Board as a representative of Region 4 from 2002 to 2004. During that time, I served on the committee that returned the ERAF money to the Cities, Counties, & Special Districts.
2. I hold a Doctor of Pharmacy Degree from the University of California Medical Center in San Francisco (UCSF) and an AA degree from San Francisco City College. I also hold two valid Pharmacy licenses (California & Nevada).
3. I have been married to my wife Eileen for over 60 years. Together we have raised three very successful adult children: Lisa, Lodene & James.
4. I served on the NCSB Board of Directors from 1994 to 2004. In 2012, I ran a successful campaign, was the top vote getter by a large margin, and returned to the NCSB for 4 more years.
5. I have a strong longtime personal relationship with our current 35th District Assemblyman Katcho Achadjian. Katcho and I both ran for local office in San Luis Obispo County in 1994.
6. I never missed a meeting when I represented CSDA Region 4 in 2002-2004. I will give you 100% of my time, if you give me your Vote in this coming election.
7. I have been involved in Water, Land use, and planning at the State & Local levels for some 35 years. Please let me put my many talents and experience to work for all the people of Coastal Network.

Please vote to put "Dr. Bob back on the job". Thank you.

Sincerely,

A handwritten signature in black ink, appearing to read "Robert Blair". The signature is fluid and cursive, with a large initial "R" and "B".

Dr. Robert L. "Bob" Blair
Director Nipomo Community Service District

Active member of:
San Luis Obispo Sheriff Advisory Council
Nipomo Chamber of Commerce
CA Sheriff's Association

00:39:26

E-4) REVIEW SUPPLEMENTAL WATER ACCOUNTING APPROACH

Peter Sevcik, Director of Engineering & Operations, reviewed the report as presented in the Board packet. Mr. Sevcik answered questions from the Board.

Directors directed staff to make some additions to the accounting approach and bring back before the Board at its next meeting.

There were no public comments.

00:59:28

E-5) CSDA BOARD OF DIRECTORS NOMINATION

Board President Craig Armstrong presented the nomination opportunity for the CSDA Board of Directors Seat A of the Coastal Network.

The Board discussed and nominated Director Robert Blair for election.

*Upon the motion of Director Craig Armstrong and seconded, the Board unanimously nominated Director Robert Blair for the CSDA Board of Directors.
 Vote 5-0.*

YES VOTES	NO VOTES	ABSENT
Directors Armstrong, Blair, Eby, Woodson, and Gaddis	None	None

01:02:05

E-6) CONSIDER BOARD MEETING SCHEDULE CHANGE

Michael LeBrun, General Manager, reviewed the report as presented in the Board packet.

The Board discussed and agreed to cancel the March 25, 2015 Regular Board Meeting and move the May 13, 2015 Regular Board Meeting to May 12, 2015.

01:04:10

F. GENERAL MANAGER'S REPORT

Michael LeBrun, General Manager, reviewed the report as presented in the Board packet. Mr. LeBrun also reported the following:

- The Nipomo Mesa Management Area (NMMA) meeting will be March 18th @ 1:30 PM at the District office*

Mr. LeBrun answered questions and took direction from the Board.

There were no public comments.

01:20:23

G. COMMITTEE REPORTS

None.

*Michael LeBrun
 General Manager*

April 8, 2015

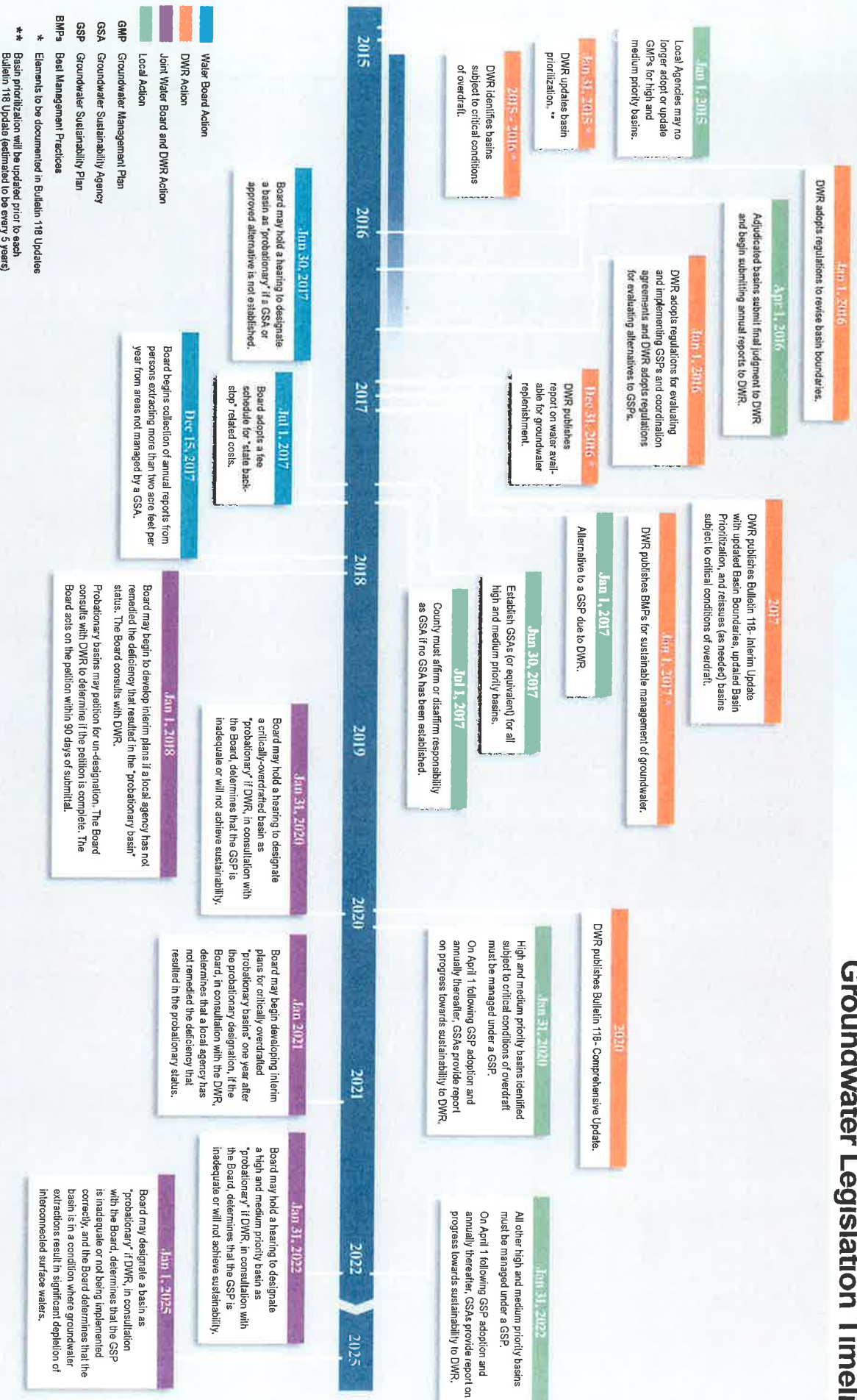
F

ATTACHMENT C

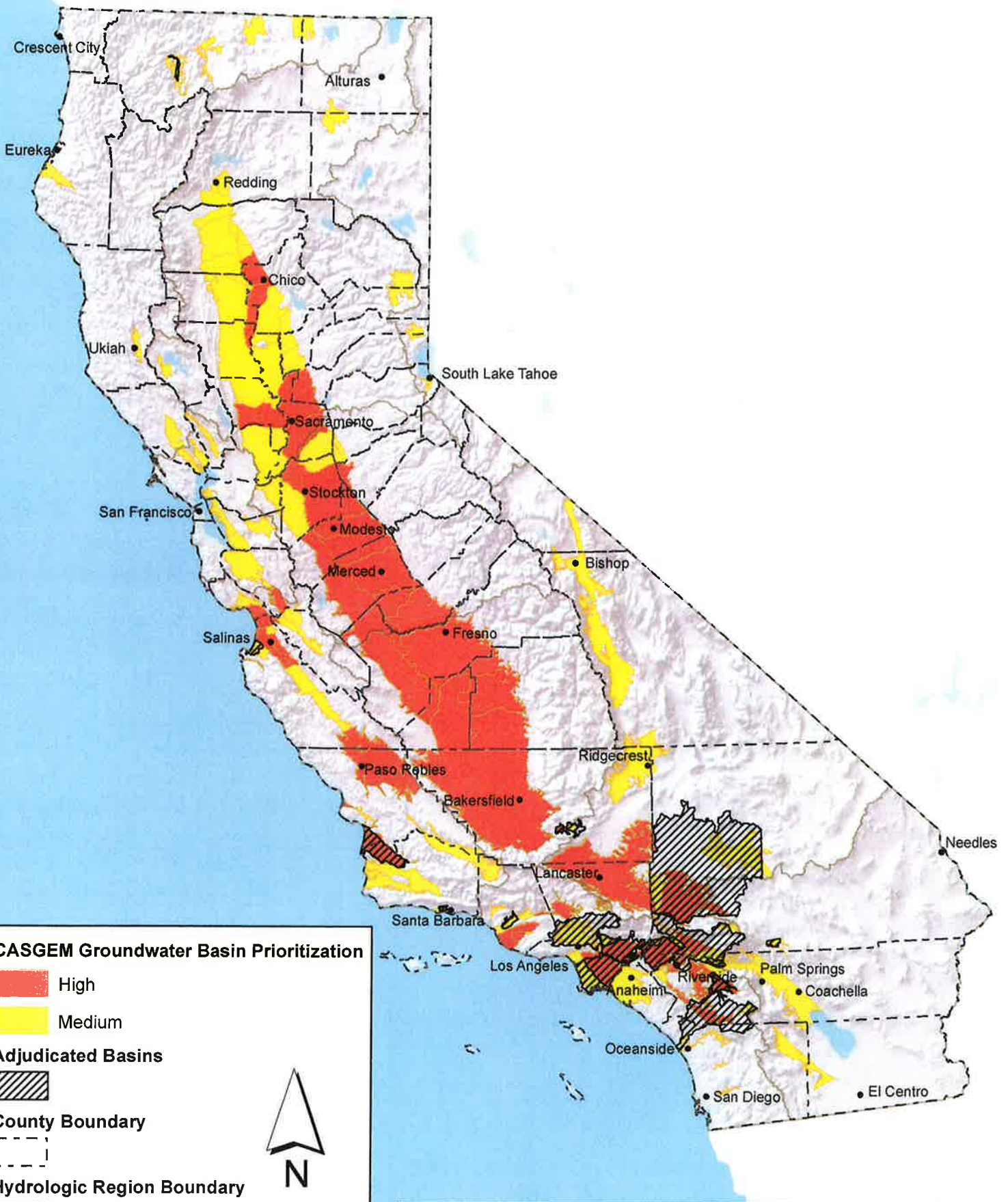
Implementation Deadlines

When	Who	What
January 31, 2015	Department of Water Resources (DWR)	Categorize and prioritize basins as high, medium, low, or very low [§ 10722.4(a)]
January 1, 2016	DWR	Adopt regulations for basin boundary adjustments and accept adjustment requests from local agencies [§ 10722.2(4)(b)]
April 1, 2016	Local water agencies or water-masters in adjudicated areas	Submit final judgment /order / decree and required report to DWR (report annually thereafter) [§ 10720.8(f)]
June 1, 2016	DWR	Adopt regulations for evaluating adequacy of Groundwater Sustainability Plans (GSPs) and Groundwater Sustainability Agency (GSA) coordination agreements [§ 10733.2]
December 31, 2016	DWR	Publish report estimating water available for groundwater replenishment [§ 10729(c)]
January 1, 2017	DWR	Publish groundwater sustainability best management practices [§ 10729(d)]
By June 30, 2017	Local agencies	Establish GSAs [§ 10735.2(a)(1)]
After July 1, 2017	State Water Resources Control Board (SWRCB)	Designate basins as probationary where GSAs have not been formed [§ 10735.2(1)]
After July 1, 2017	Groundwater users in probationary basins	File annual groundwater extraction report with SWRCB by December 15 each year [§ 5202]
January 31, 2020	GSAs in medium- and high-priority basins in critical overdraft	Adopt GSPs and begin managing basins under GSPs [§ 10720.7(a)(1)] or alternative [§ 10733.6]
After January 31, 2020	SWRCB	Designate basins as probationary where GSPs have not been adopted in medium- and high-priority basins in critical overdraft [§ 10735.2(1)]
January 31, 2022	GSAs in other medium- and high- priority basins	Adopt GSPs and begin managing basins under GSPs [§ 10720.7(a)(2)]
After January 31, 2022	SWRCB	Designate basins as probationary where GSPs have not been adopted in other medium- and high-priority basins [§ 10735.2(1)]
After January 31, 2025	SWRCB	Designate basins as probationary where GSPs are inadequate or not being implemented, and extractions result in significant depletions of interconnected surface waters [§ 10735.2(a)(5)(B)]
After January 31, 2040	GSAs (in medium- and high-priority basins in critical overdraft)	Achieve groundwater sustainability goals (DWR may grant two five-year extensions upon a showing of good cause) [§ 10727.2(3)(A)]
After January 31, 2042	GSAs (in other medium and high priority basins)	Achieve groundwater sustainability goals (DWR may grant two five-year extensions upon a showing of good cause) [§ 10727.2(3)(A)]

Groundwater Legislation Timeline



* Elements to be documented in Bulletin 118 Updates
 ** Basin prioritization will be updated prior to each Bulletin 118 Update (estimated to be every 5 years)



Prioritized groundwater basins are depicted from the Final Basin Prioritization Results published on June 10, 2014 on the CASGEM website and graphically represented using the DWR Bulletin 118 basin boundaries. Adjudicated Basins and Hydrologic Region Boundaries obtained from DWR



Groundwater Legislation Implementation Fact Sheet

Topline Message

- **Groundwater Legislation:** On September 16, 2014, Governor Edmund G. Brown Jr. signed three bills --- AB 1739 by Assemblymember Roger Dickinson and SB 1168 and SB 1319 by Senator Fran Pavley --- which create a framework for sustainable, local groundwater management for the first time in California history. The legislation allows local agencies to tailor groundwater sustainability plans to their regional economic and environmental needs.
- **Two key principles to the groundwater legislation:**
 - Groundwater is best managed at the local or regional level, and local agencies should have the tools they need to sustainably manage their resources. Some local and regional agencies do not have the necessary tools to be successful. The legislation ensures that local and regional agencies have the resources they need to sustainably manage groundwater, including the necessary authority, better technical information and financial resources.
 - When local or regional agencies cannot or will not manage their groundwater sustainably, the state will intervene until the local agencies develop and implement sustainable groundwater management plans. This limited state intervention would be temporary – until an adequate local program is established – to ensure the protection of the groundwater basin and its users from overdraft, subsidence and other problems stemming from unsustainable uses of groundwater resources.
- **California Water Action Plan:** In January 2014 the Brown Administration released the California Water Action Plan to put California on the path to sustainable water management. Groundwater management is an important piece of the California Water Action Plan.
- **Drought:** The drought and drought response continue to be a top priority for the Brown Administration. As the administration works on emergency actions to manage the immediate crisis, it is also taking proactive, long-term steps to prepare California for future droughts and floods. The

current drought reminds us of how important groundwater is for many Californians, because times of drought are precisely when pumping groundwater is necessary. Therefore, it is crucial that these groundwater basins are properly managed and allowed to recharge.

- **Water Bond:** Proposition 1 is a general obligation bond in the amount of \$7.545 billion. It includes funding for ecosystems and watershed protection and restoration, water supply infrastructure projects, including surface and groundwater storage, and drinking water protection.

The planning and coordination for the water bond implementation will be part of the larger effort to build the Governor's January 10 budget. The agencies, departments, conservancies and boards that have been allocated bond funds will all work with the Department of Finance through the normal budget process and use the California Water Action Plan as a long-term guide for expenditure priorities.

- **Water Bond Funds for Groundwater:** Proposition 1 provides \$100 million for sustainable groundwater management planning and implementation for local groundwater sustainable agencies. The bond also provides billions more for groundwater cleanup, storage projects and other actions that will help local agencies manage groundwater sustainably.
- **Groundwater is a critical element of our water supply in California.** It makes up more than one-third of our water supply in wet years and more than half of our water supply in dry years. Groundwater basins provide cost-effective local storage for water supplies that, if well managed, will make communities more resilient against climate change and future droughts.
- **The state's water management system is unsustainable.** The system is unable to reliably meet human, economic and ecological needs. Currently, where groundwater is managed, it is managed by local and regional agencies, some of which manage their resources sustainably. Other regions do not manage sustainably, resulting in problems such as groundwater overdraft, land subsidence, dry wells, increased pumping cost and deteriorated water quality.

Summary of Groundwater Legislation

1. Adopts a state definition of "sustainable groundwater management"
2. Empowers local agencies to achieve sustainability
3. Establishes a uniform framework for local groundwater management planning
4. Respects regional differences and provides local agencies flexibility to tailor plans that meet their needs
5. Provides state technical assistance
6. Improves coordination between land use and groundwater planning
7. Provides for state review of groundwater plans and limited state intervention authority when local action has been insufficient
8. Protects water rights

Core Principles

- **Groundwater should be locally and collaboratively managed to address unique basin conditions and challenges.** Every basin is different, and solutions must be tailored to the basin and its users. Over time, local residents will largely pay for and benefit from the construction, operation and maintenance of improvements to their water resources. Consequently, it is essential that local and regional agencies exercise leadership and obtain consensus on the solutions to their groundwater problems.
- **Groundwater should be managed sustainably.** The goal in all regions of the state must be to manage groundwater sustainably. It is not acceptable for a region to deplete or degrade its groundwater resources to the detriment of future generations.
- **The state's role should complement and support the goal of local sustainable groundwater management.** The state should support local control of sustainable groundwater management by providing the necessary authority, technical support and financial resource options. The state should step in only when local agencies are unable or unwilling to solve serious groundwater problems. When the state does so, however, it should transfer management back to local authorities when they are prepared to assume responsibility.
- **Water rights should be protected.** The water rights of existing water right holders should be reassured that their rights are protected by law. The goal is better groundwater management, which makes those rights more valuable.

Background

- **Groundwater is essential to California.** Because of California's variable precipitation and regular dry periods, California has always relied on groundwater, particularly when surface water is scarce.
 - More than 80 percent of Californians rely, in part, on groundwater for their drinking water.
 - Groundwater is about 38 percent of the state's total annual water supply— up to 60 percent in dry years.
 - Rural areas and small urban areas rely entirely on groundwater, as well as some larger cities, such as Fresno.
 - Groundwater basins are one of the most cost-effective and environmentally friendly places to store water locally during wet years.
 - Collectively, groundwater basins are the state's largest reservoirs— more than 10 times the size of all its surface reservoirs combined.
 - If managed well, groundwater can serve as a buffer against the impacts of climate change and drought.

- **Groundwater and surface water are part of the same system.** Groundwater feeds surface water streams when groundwater levels are high. When groundwater levels decline, groundwater contributions to stream flow may decline or surface streams may lose more water to the aquifer than under natural conditions. Some streams may become completely disconnected from groundwater, entirely losing contributions from groundwater inflow.
- **Groundwater problems vary greatly and are locally very important.**
 - Overdraft is a problem in large parts of the San Joaquin Valley, as well as some Central Coast and southern California basins with limited surface supplies.
 - Between 2006 and 2010, the Central Valley lost enough groundwater to fill our largest reservoir, Lake Shasta, five times.
 - Seawater intrusion into aquifers is a problem in some coastal areas, such as the Oxnard plain and parts of Monterey County.
 - Groundwater pumping is dewatering rivers that supply surface water to communities and farms, and support salmon and other important species.

Q&A

Q. What does “sustainable” mean?

A. Simply put, sustainable groundwater management means managing our precious water so that it is available for future generations, while balancing the more immediate needs of our economy, environment and essential human health and safety.

Q: Many areas already manage their groundwater sustainably. Does the legislation impose new mandates on them?

A: One of the law’s core principles is that groundwater should be managed at the local and regional level. There are many examples where local management has proven successful and state management is not needed. As long as local or regional agencies are demonstrably managing their groundwater in sustainable fashion, state management is unnecessary. The state’s role is then limited to support and monitor the success of local or regional management agencies.

Q. How does the groundwater legislation relate to the drought?

A. Sustainable groundwater management is an issue that goes beyond the current drought. Improved groundwater management will put us in a better position to recharge our groundwater basins in future wet years and will make communities more resilient to climate change and future droughts. The drought has highlighted groundwater’s importance in California’s overall water supply, as well as the vulnerability of the resource. This drought has led to an increased demand for groundwater and is expected to worsen overdraft in some areas. The problem is not new, however, and overdraft has been occurring in some basins for decades.

Q. What is overdraft?

A. A basin is in overdraft when the amount of groundwater pumped from the basin exceeds the amount of water recharging the basin over a period of time. When overdraft continues for a number of years, significant impacts may occur, including land subsidence, water quality degradation, dry wells, seawater intrusion and increased extractions costs.

Q. What is long-term overdraft?

A. Long-term overdraft means the condition of a groundwater basin where the average annual amount of water extracted for a long-term period, generally 10 years or more, exceeds the long-term average annual supply of water to the basin, plus any temporary surplus.

Q. How is limited state intervention consistent with local control?

A. First and foremost, groundwater should be managed at the local and regional level. This new law ensures that local and regional agencies have the tools they need to sustainably manage their groundwater resources. Locally derived solutions are often the most successful because they can best account for local conditions and needs, but some local areas have found it difficult to solve groundwater problems for a variety of reasons. Where local and regional agencies have been unable or unwilling to manage their groundwater sustainably, the state is authorized to step in to ensure that our precious groundwater resources are around for future generations. In all cases, the goal will be to develop long-term, sustainable groundwater management at the local or regional level – not management in Sacramento.

Q. What about surface water?

A. Surface and groundwater are interconnected and must be managed together. This groundwater legislation is one component of the California Water Action Plan, which is a comprehensive approach to both ground and surface water management. In places where local agencies manage groundwater sustainably, they generally have developed a broad range of strategies, including conservation, replenishment projects, stormwater capture and water recycling. Groundwater management plans and programs for specific areas will need to be integrated with surface water management within their regions, depending on the overall make-up of local water supplies.

Q. Why are you not talking about new reservoirs?

A. Expanding water storage capacity, both on the surface and underground, is one of the key elements identified in the California Water Plan. When it comes to groundwater, however, there are no easy fixes. In addition to more surface storage, we need to consider a broad range of management options, including recharging groundwater with surface water, conservation, increased use of recycled water, capturing and re-using stormwater, and better integration among regional projects. Local agencies that manage groundwater successfully typically use a variety of these tools. In areas where groundwater overdraft and water quality concerns have been mounting for decades, local agencies can probably only resolve them through a diverse set of solutions.

Q. How will the water bond benefit groundwater?

A. The water bond will provide \$100 million for competitive grants for preparation of sustainable groundwater plans and implementation of groundwater management projects. The bond also provides billions more for groundwater cleanup, storage projects and other actions that will help local agencies manage groundwater sustainably.

Key Dates

- **January 31, 2015:** Department of Water Resources (DWR) establishes groundwater basin priorities. This will determine which basins require groundwater sustainability plans.
- **2015 to 2016:** DWR identifies basins subject to critical conditions of overdraft.
- **January 1, 2016:** DWR adopts regulations to revise basin boundaries.
- **June 1, 2016:** DWR adopts regulations for evaluating groundwater sustainability plans.
- **December 31, 2016:** DWR publishes report on water available for replenishment of groundwater in the state.
- **January 1, 2017:** DWR publishes best management practices for the sustainable management of groundwater.
- **June 30, 2017:** Local agencies must establish groundwater sustainability agencies.
- **July 1, 2017:** State may designate probationary basins where groundwater sustainability agencies are not established.
- **January 31, 2020:** Groundwater sustainability plans are adopted and implementation is under way for basins in critical overdraft. Plans are submitted to DWR for adequacy review upon adoption.
- **January 31, 2022:** Groundwater sustainability plans are adopted and implementation is under way for high and medium priority basins not in critical conditions of overdraft. Plans are submitted to DWR for adequacy review upon adoption.
- **January 31, 2040:** Groundwater sustainability agencies in critically over drafted basins achieve sustainability goal.
- **January 31, 2042:** Groundwater sustainability agencies in basins not in critical condition of overdraft achieve sustainability goal.

Fact Sheet

The Sustainable Groundwater Management Act of 2014 is a comprehensive three-bill package that provides a framework for sustainable management of groundwater supplies by local authorities, with a limited role for state intervention only if necessary to protect the resource.

The act requires the formation of local groundwater sustainability agencies (GSAs) that must assess conditions in their local water basins and adopt locally-based management plans. The act provides substantial time – 20 years – for GSAs to implement plans and achieve long-term groundwater sustainability. It protects existing surface water and groundwater rights and does not impact current drought response measures.

ACWA supported the legislation, which was substantially consistent with recommendations developed by the association's Groundwater Sustainability Task Force and adopted by the ACWA Board of Directors. ACWA's recommendations, together with recommendations from the California Water Foundation and input from other stakeholders, helped shape many provisions to protect local control and empower local agencies to achieve the sustainability goal.

The Sustainable Groundwater Management Act of 2014 is considered just one part of a statewide, comprehensive water plan for California that includes investments in water conservation, water recycling, expanded water storage, safe drinking water, wetlands and watershed restoration. The plan is intended to ensure a reliable water supply for California for years to come.

GSAs and Local Sustainability Plans

The Sustainable Groundwater Management Act provides local GSAs with tools and authority to:

- Require registration of groundwater wells
- Measure and manage extractions
- Require reports and assess fees
- Request revisions of basin boundaries, including establishing new subbasins

GSAs responsible for high- and medium-priority basins must adopt groundwater sustainability plans within five to seven years, depending on whether the basin is in critical overdraft. Agencies may adopt a single plan covering an entire basin or combine a number of plans created by multiple agencies. Preparation of groundwater sustainability plans is exempt from CEQA.

Plans must include a physical description of the basin, including groundwater levels, groundwater quality, subsidence, information on groundwater-surface water interaction, data on historical and

projected water demands and supplies, monitoring and management provisions, and a description of how the plan will affect other plans, including city and county general plans.

Plans will be evaluated every five years.

State Involvement and Technical Assistance

The California Department of Water Resources (DWR) has several tasks under the Sustainable Groundwater Management Act. It must:

- Designate basins as high, medium, low or very low priority by Jan. 31, 2015
- Adopt regulations for basin boundary adjustments by Jan. 1, 2016
- Adopt regulations for evaluating adequacy of GSPs and GSA coordination agreements by June 1, 2016
- Publish a report estimating water available for groundwater replenishment by Dec. 31, 2016
- Publish groundwater sustainability best management practices by Jan. 1, 2017

State Review and Intervention

The State Water Resources Control Board may intervene if a GSA is not formed or it fails to adopt or implement compliant plans by certain dates.

DWR is tasked with reviewing GSPs for adequacy after they are adopted at the local level. If DWR determines in its review that a GSP is not adequate, the State Board may designate the basin as “probationary.” If the local agency does not respond within 180 days, the State Board is authorized to create an interim plan that will remain in place until a local GSA is able to reassume responsibility with a compliant plan.

Financial Assistance

If approved by voters, Proposition 1 would provide \$100 million in funding to GSAs to develop and implement sustainable groundwater management plans.

Key Implementation Dates

- **June 30, 2017:** Local groundwater sustainability agencies formed.
- **Jan. 31, 2020:** Groundwater sustainability plans adopted for critically overdrafted basins.
- **Jan. 31, 2022:** Groundwater sustainability plans adopted for high- and medium-priority basins not currently in overdraft.
- **20 years after adoption:** All high- and medium-priority groundwater basins must achieve sustainability.

April 8, 2015

F

ATTACHMENT D



**North American Society for Trenchless Technology (NASTT)
NASTT's 2015 No-Dig Show**



**Denver, Colorado
March 15-19, 2015**

MM-T2-05

HDD Crossing of the Santa Maria River and 110-foot-high Bluff

Norman Joyal, PE GE, McMillen Jacobs Associates, Walnut Creek California
Peter Sevcik, PE, Nipomo Community Services District, Nipomo, California
Jody Parish, ARB, Lake Forest, California

1. ABSTRACT

The Nipomo Community Services District (NCSD) is committed to a \$17.5 million project to interconnect four regional water providers to import treated water from the City of Santa Maria and distribute it to the Nipomo Mesa Management Area. The most important and technically challenging element of this new distribution system is the \$6 million transmission main crossing of the Santa Maria River. A 2,600 foot (792 m) HDD crossing of the Santa Maria River with 30-inch (760 mm) outside diameter high-density polyethylene (HDPE) pipe was required for the main crossing. This crossing forms the backbone of the NCSD's Supplemental Water Project. The alignment not only had to navigate beneath the Santa Maria River and its broad flood plain, but it had to traverse up an inclined alignment through the 110-foot-high (34 m) bluff of the Nipomo Mesa. This alignment was complicated by highly permeable riverbed deposits consisting of sand, gravel, and cobble zones. These materials were present within and beneath the environmental habitat of the Santa Maria River, and surface disturbance of this habitat was not permissible. The imposing 110-foot-high (34 m) bluff further complicated the crossing by eliminating any open-cut installation through the bluff. Horizontal directional drilling (HDD) was selected as the method of construction for the river and bluff crossing.

This paper examines the design challenges associated with an HDD alignment with a 110-foot elevation difference, discusses the challenges encountered during construction, and analyzes the lessons learned on this difficult crossing.

2. INTRODUCTION

Over ten years ago, the Nipomo Community Services District (NCSD) began an ambitious project to interconnect the NCSD water distribution system with the City of Santa Maria Water Distribution System. The project will deliver supplemental water purchased by NCSD from the City of Santa Maria. It will allow NCSD to reduce pumping from existing wells to slow the depletion of groundwater and reduce the potential for seawater intrusion beneath the Nipomo Mesa. In addition, the project will increase the reliability of the NCSD water supply by providing an additional source other than groundwater. The project also satisfies the settlement agreement and judgment related to the groundwater adjudication of the Santa Maria Groundwater Basin. NCSD committed to a \$17.5 million water distribution project that includes a pumping station, 7,500 lineal feet (2,286 m) of 24-inch (610 m) ductile iron pipe water transmission main, a 2,600-lineal-foot (793 m) HDD water transmission main crossing of the Santa Maria River, and a flow meter and flow control station.

3. PROJECT CHALLENGES

3.1 Alignment

The most important and technically challenging element of this new distribution system is the \$6 million transmission main crossing of the Santa Maria River. The river flows along the base of the 110-foot-high (34 m) bluff of the Nipomo Mesa, although historical meandering of the river has resulted in an environmental river basin that extends several thousand feet from the bluff toe (Figure 1).



Figure 1: View from top of bluff looking out over the river basin.

This crossing forms the backbone of the NCS D's Supplemental Water Project. The alignment not only had to navigate beneath the Santa Maria River and its broad flood plain, but it had to traverse up the inclined bluffs of the Nipomo Mesa. This alignment was complicated by highly permeable riverbed deposits consisting of sand, gravel, and cobble zones. These materials were present within and beneath the environmental habitat of the Santa Maria River, and surface disturbance of this habitat was not desirable. NCS D anticipated that acquiring the permits necessary to allow conventional open-cut construction would be difficult, costly, and time consuming, and decided that the crossing would have to be made using trenchless construction.

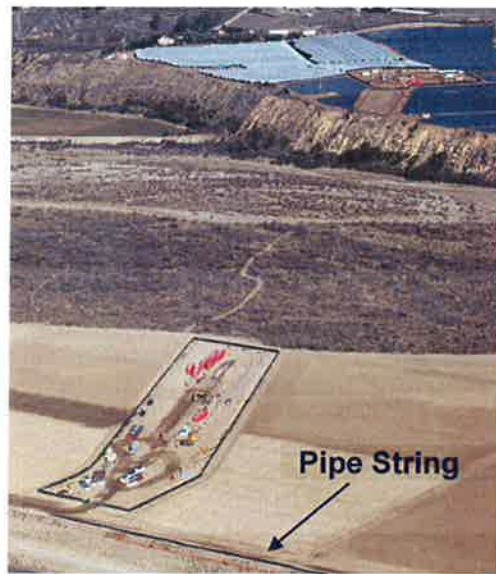


Figure 2 Aerial view of project alignment with the south entry point in the foreground

The southern side of the river basin is farmed. This provided an area within the basin from which to stage a trenchless operation. Even so, the designated work area was about 2,000 feet (610 m) from the bluff (Figure 2). The bluff tops are agricultural strawberry fields. The NCS D had to negotiate several acres of temporary construction easements and crop loss compensation with the farmer, as well as a permanent easement through the field for that portion of the force main that extends to the NCS D treatment plant. The trenchless approach had to take these geographic limitations into consideration as well as the inclined alignment up the bluff. Microtunneling was discounted because of the ground conditions and because of the shaft depth that would have been needed in the bluff. The geometric layout of the crossing dictated that horizontal directional drilling (HDD) was the most feasible trenchless method to complete the crossing.

The pipe selected for the project was a 30-inch (760 mm) outside diameter (OD) high-density polyethylene (HDPE) DR-9 pipe. The HDD crossing was designed as a 2,600-foot-long (792 m) reach beneath the river and up the bluff. The crossing had to be laid out with the pullback occurring from the bluff as there was no pipe assembly and laydown area on the Mesa. Field access to the farmer's strawberries could not be cut off by the pipe. The length, ground conditions, pipe diameter, and laydown restrictions were the primary drivers that required the use of a maxi rig on the Mesa side.

In order to provide sufficient separation between the abrupt bluff toe and the bore path, the entry angle from the bluff side was specified at 14.5 degrees. This geometric layout provided about 45 feet (13.7 m) of separation between the bore and the bluff toe. An entry angle of 9 degrees was specified at the pipe entry point in the river basin.

3.2 Ground Conditions

The river crossing with HDD presented some formidable challenges from a geotechnical point of view (Figure 3). Starting with the bluffs, the upper reaches of the alignment had to penetrate about 80 feet (24 m) of dune sand. Beneath the river basin, the alignment was challenged by highly permeable river bed deposits consisting of sand, gravel, and cobble zones overlying the Paso Robles Formation, a finer-grained variation of the river bed deposits. Borehole descriptions of "rig chatter – possible cobbles" and notations indicating the loss of drilling fluid on the bore logs were good indicators that pilot hole drilling and subsequent reaming passes were going to be challenging even for the most experienced HDD contractor. Furthermore, the alluvial channel deposits at the surface (20–40 feet thick [6–12 m]) are recent unconsolidated loose deposits above groundwater. These materials were deemed unstable and prone to inadvertent surface returns because of the loose consistency and highly permeable engineering properties of the coarser deposits.

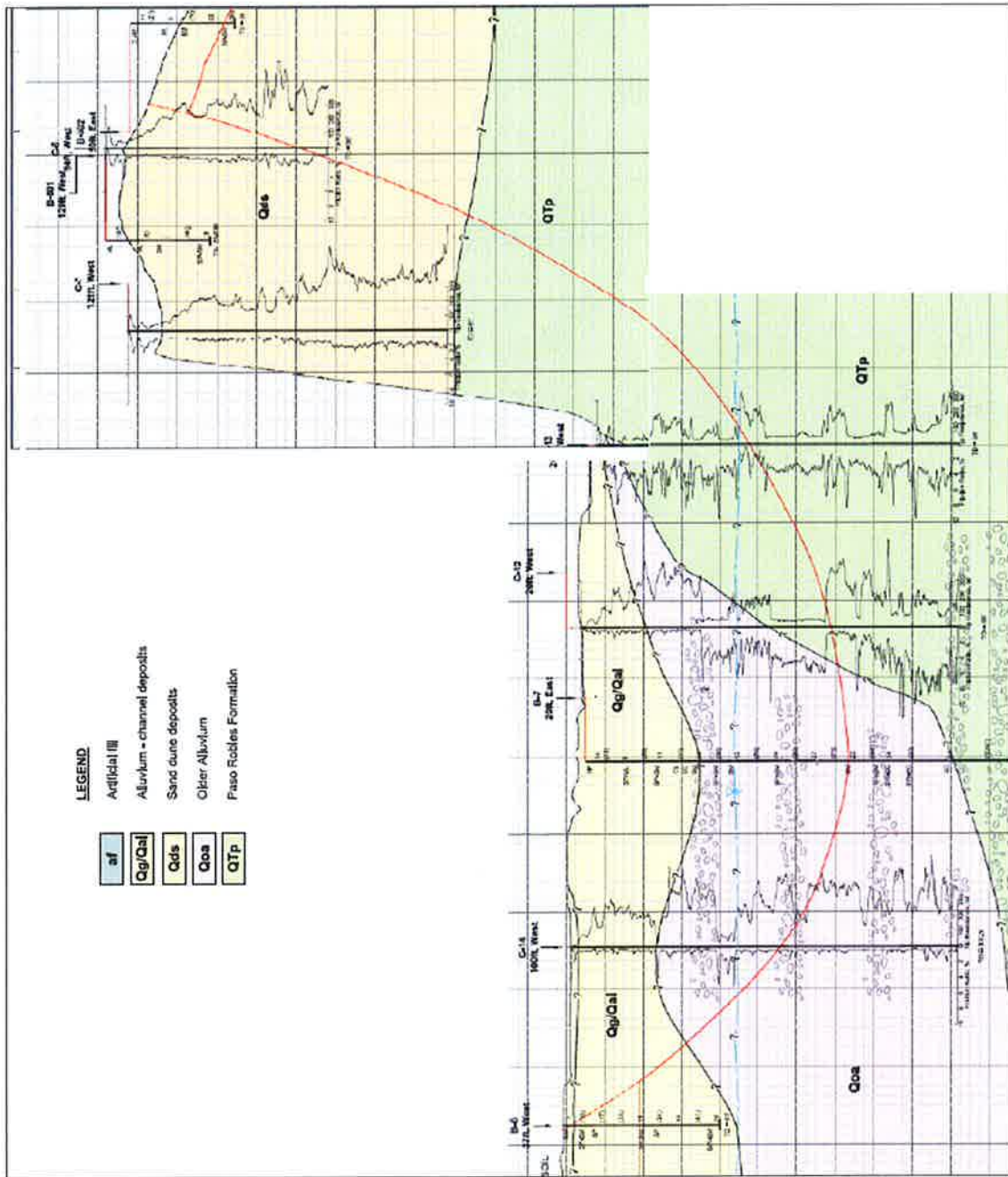


Figure 3. Generalized geologic profile below river basin and bluff.

3.3 Environment Constraints

The alignment was constructed beneath the environmentally sensitive river basin. The width of the environmental zone extended about 2,000 feet (610 m) from the bluff toe. This zone was encumbered by access limitations that became more restrictive as the alignment got closer to the bluff toe. This area presented a special concern over inadvertent returns fracking out within the river basin during the HDD processes.

4. OVERCOMING THE DESIGN AND CONSTRUCTION CHALLENGES

4.1 Alignment

Recognizing that the HDD bore and reaming processes were going to be challenging even for the most experienced HDD contractor, NCS D thought it was in the best interests of the project to prequalify the HDD contractors for bidding. After preparation of the prequalification documents, the project was nationally advertised and invitations were sent to HDD contractors known to have maxi rigs in their arsenal of equipment. Even with direct invitation to numerous HDD contractors, NCS D's prequalification efforts met with only two responding HDD contractors—with ARB ending up being the selected HDD contractor.

4.2 Ground Conditions

The formidable obstacles posed by the ground conditions, the challenging elevation difference between that entry and exit points, and the environmental concerns over surface returns were dealt with in various fashions. The crossing was designed as a midpath intercept for installation of the pilot bore. This requirement accomplished several things to mitigate the associated risk.

First, it meant at least two rigs were needed on-site. This reduced risk associated with using only one rig and having it experience a major mechanical failure in the difficult ground conditions that could potentially delay the schedule by weeks. With two rigs on-site, if one experienced a significant breakdown, there would be a working rig to advance the bore while repairs to the second rig were being undertaken.

Second, the midpath intercept method results in lower borehole pressures as compared to the borehole pressures that would be developed by a single rig working on the Mesa side. High borehole pressures would be needed with a single rig to circulate drilled material near the end of the bore all the way back to the drill pit on the bluff. A hydrofracture assessment based on one rig working from the Mesa determined that the potential for hydrofracture existed during the pilot bore when the depth of cover from the entry points was less than about 50 feet (15 m) from either side. The midpath intercept reduced the risk of an inadvertent return reaching the surface because borehole pressures only need to move slurry half the distance compared to a single rig approach.

To reduce the risk of surface returns, conductor barrels were required at both entry points. Both 60-foot-long (18m) conductor barrels were placed and set in side-sloped slot excavations and backfilled (Figure 4). Both barrels were outfitted with centralizers through which a 16-inch (405 mm) casing 65 feet long was installed (Figure 5). The 16-inch (405 mm) casing was used during the pilot bore, but it and the centralizers were removed from the barrel during the reaming process.



Figure 4. Conductor barrel in side-sloped trench.



Figure 5. 16-inch (405 mm) casing centralized in the conductor barrel .

4.3 Guidance

Guidance for the midpath intercept was provided by laying out an electromagnetic coil on the Mesa up to the bluff face. On the river side, the electromagnetic coil was laid out across the flood plain between the work site and the bluff toe. The pilot bore was guided along the design path using a tensor magnetic guidance probe and a TruTracker guidance system. Guidance readings were taken at the end of every joint, and the data were juxtaposed against the design bore path plotted to scale as the drilling progressed.

4.4 Drilling

The ground conditions lived up to the expectation of being difficult and challenging for the two maxi rigs. In general, the pilot bores were drilled without too much difficulty, and the midpath intercept was successfully accomplished. Before the intercept, each rig was hampered by the loss of fluid returns, and this provided a glimpse of what was to be expected during the reaming passes.

The midpath intercept was started on the south side, and the pilot hole was drilled out to about 1,450 feet (442 m) from the south entry point and dead ended in the Paso Robles Formation. The drilling operation was then moved to the north entry point on the Mesa to begin drilling the other half of the intercept. Rather than using a dedicated magnetic source at the end of the drill string in the first half of the pilot hole to steer towards, the contractor elected to use careful plotting and tracking for the second half of the pilot bore with the intent of making a side approach rather than a bit to bit approach. Their system is able to detect the presence of steel in the ground and they were able to establish parallel side by side bores using this approach. After side-by-side holes were established, the intercept was made by adding one more joint to the south side drill string and steering towards the adjacent parallel bore. The second half of the pilot hole was drilled about 1,150 feet (351 m) from the Mesa entry to complete the intersect hole. The requirement to have two drilling rigs drill an intersect pilot hole “really paid off” according to the contractor. Although a value engineering alternative had been submitted by the contractor to use one maxi rig to complete the pilot bore, he was grateful his alternative was rejected as the two-rig approach proved invaluable in conquering the ground conditions during the pilot bore and subsequent reaming passes.

4.5 Reaming

The contractor elected to ream from the south to the north (from river basin towards the Mesa) using mill tooth split bit hole openers (Figure 6). The reaming plan was to make an initial 26-inch (660 mm) reaming pass, followed by a 36-inch (915 mm) pass and a 42-inch pass (1,065 mm), and finally by a swab pass with a barrel reamer (Figure 7) before pulling back the 30-inch (760 mm) OD HDPE product line. The reaming was accomplished with the maxi rig on the Mesa side. The maxi rig at the river site did not work in tandem with the Mesa rig, and it was deployed only when needed. Working with 10 joint increments at the river work site, the contractor added pipe joints to maintain continuity or removed joints when the string was advanced from the Mesa side, such that there was drill string continuity in the hole at all times.



Figure 6. 42-inch mill tooth reamer.



Figure 7. Barrel reamer for swab pass.

The 26-inch ream pass went well and was rather uneventful. It was completed in four and one-half days even though cobbles and hard formations were encountered. The 36-inch ream also went well, and that too was uneventful, taking four days to complete.

The 42-inch ream pass was another story. It seemed that everything that could go wrong did go wrong. The rate of penetration was very slow in the Paso Robles Formation. After the crew pulled from south to north for 2,150 feet (655 m), there was a pin to box connection failure in the drill string. The drill pipe threads had become stripped but did not disconnect. The crew moved back to the south side and rigged up to pull the reamer out from the south as the pipe string on back side of the reamer was still in good shape. The reamer was pulled back towards the south pit from 2,150- to 680-feet (655–207 m), where it became stuck in a known gravel and cobble zone.

In an attempt to alleviate the stuck reamer, the contractor jetted the gravel and some of the cobble away from the drill string with a 9-7/8-inch (250 mm) jetting assembly, freeing up the 42-inch reamer. The driller pulled the reamer back another 55 feet (17 m), at which point the drill string twisted off in the hole because a crossover sub connection failed at the reamer. All of the drill pipe was extracted from both ends of the hole, leaving the 42-inch reamer (1065 mm) in the hole. This required drilling another pilot hole from the south work site with a 10 foot (3 m) offset from the original insertion point and intersecting the reamed hole around 660 feet (201 m) out. Once the intersect was reestablished, a 26-inch (660 mm) ream pass was completed from north to south to relubricate the hole with drilling fluid. This was followed by a 36-inch (915 mm) ream pass from south to north. During this pass, as the reamer was traversing beneath the bluff in the Dune Sands Formation, sinkholes developed on the surface and a large volume of material was returned with the mud to the south side (Figure 8).

The project team met to discuss grouting the sandy material under the bluff that was being loosened by the reaming operation and causing sinkholes to form. The contractor mobilized a grouting contractor that worked 24 hours a day for 9 days and injected grout into the drill zone, creating a weak sandstone. A new pilot hole had to be redrilled in the improved ground, which was subsequently reamed again to a 42-inch diameter. The process worked to stabilize the drill zone enough so that the pipe was installed successfully.



Figure 8. Sinkholes in Mesa dune sand.

4.6 Installation

To reduce the frictional forces between the pipe and the excavated hole during pullback, the contractor was required to fill the pipe with water for ballast. However, when the pipe would be pulled from the river low side to the Mesa high side, negative internal pressures would develop in the pipe as the water column in the pipe transitioned out of the fluid-filled borehole up the inclined bluff. To overcome these challenges, the contractor devised a fill plan that aimed to keep the water level in the pipe at the same level as the entry point. A stationary fill point was established at the back end of the fused string, and the water fill line stayed stationary and did not move as the pipe was pulled. To overcome the negative internal pressures that would develop from pulling a water-filled pipe up the high bluff, the contractor installed a 4-inch-diameter (100 mm) pipe inside the pipe string to provide atmospheric pressure at the leading end of the pipe when it transitioned up the bluff (Figure 9). The line extended all the way to the front of the pipe and, it moved along with the pipe string.



Figure 9. Water fill bottom line and rope-restrained air line top.

5. THE SUCCESSES

The pilot bore and reaming processes were completed without any surface returns of the drilling fluids. However, there were inadvertent returns during those periods of time when drilling penetrated some of the more porous gravel/cobble and possible boulder-laden zones without any controlled returns along the borehole to the surface.

Despite the challenges and adversity faced in completing the reaming process during a 12-hour period (November 15 to 16, 2013), 2,600 feet (792 m) of 30-inch (760 mm) OD HDPE pipe was pulled across the Santa Maria River and adjacent 110-foot-high (34 m) bluff. This crossing forms the backbone of the Nipomo Community Services District's (NCSD) Supplemental Water Project.

The original construction contract cost was \$5,847,090, and the revised contract cost including change orders was \$6,068,228. The majority of the cost for change orders was for grouting on the Mesa side to stabilize the materials above the borehole. The project was completed within the amount budgeted for construction and within the allowed contract time.

6. LEARNED LESSONS

Knowing drilling would be difficult, NCSD prequalified the HDD contractors prior to bid, which worked in favor of NCSD when the HDD contractor was challenged by known cobble zones that the HDD profile penetrated. The contractor's experience in drilling and reaming through these types of ground conditions proved invaluable to the success of the bore. Once the drilling and reaming issues were overcome, there was the lingering concern about how the drilling issues might impact the pullback. The pullback was tackled in normal industry fashion with a reamer spearheading the pull with a swivel head connection between it and the pipe, as depicted in Figure 10. Everyone's concerns were alleviated by a rather uneventful pullback over the 12 hour period (Figure 11). The crossing was achieved quickly and successfully, and the goals of NCSD's ten-year planning process were finally achieved.



Figure 10. Reamer returns being checked before reamer leads the way for the swivel head and pipe.



Figure 11. Pipe snaked along access road prior to pullback.

7. REFERENCES

Bennett, D., and Ariaratnam, S. (2008). Horizontal Directional Drilling Good Practices Guidelines, North American Society for Trenchless Technology (NASTT), Third Edition, USA.

Fugro (March 2, 2009). Geotechnical Report, Nipomo-Santa Maria Intertie, Blosser Road to Tefft Street, Nipomo Communities Services District, Nipomo, California.

April 8, 2015

F

ATTACHMENT E

NIPOMO COMMUNITY

BOARD MEMBERS
CRAIG ARMSTRONG, PRESIDENT
DAN GADDIS, VICE PRESIDENT
BOB BLAIR, DIRECTOR
ED EBY, DIRECTOR
DAN WOODSON, DIRECTOR



SERVICES DISTRICT

STAFF
MICHAEL S. LEBRUN, GENERAL MANAGER
LISA BOGNUDA, FINANCE DIRECTOR
PETER SEVCIK, P.E., DIRECTOR OF ENG. & OPS.
MICHAEL W. SEITZ, GENERAL COUNSEL

Celebrating 50 Years of Service to the Community, 1965 - 2015

148 SOUTH WILSON STREET POST OFFICE BOX 326 NIPOMO, CA 93444 - 0326
(805) 929-1133 FAX (805) 929-1932 Website address: ncsd.ca.gov

March 17, 2015

Mr. Rob Miller, General Manager
Woodlands Mutual Water Company
c/o Wallace Group
612 Clarion Court
San Luis Obispo, CA 93401

Dear Mr. Miller:

SUBJECT: NIPOMO SUPPLEMENTAL WATER PROJECT

The Nipomo Community Services District ("NCS D") is pleased to confirm its understanding and agreement for the critical financial support of the Woodland Mutual Water Company ("WMWCo") in the purchase and importation of supplemental water to the Nipomo Mesa. The supplemental water will be used to augment existing water sources to meet the needs of NCS D, Golden State Water Company, and Rural Water Company, as well as the development of the Woodlands project.

More specifically, the Stipulation in the Santa Maria Water Basin case obligates WMWCo to purchase 416 acre feet of supplemental water (16.66% of the 2500 acre feet of supplemental water to the Mesa). NCS D has prepared a draft Water Resources Policy Statement (attached) which clarifies its position with respect to the Woodlands Specific Plan area. As noted in item 4 of the statement, it is the District's position that development within and consistent with the Woodlands Specific Plan is exempted from the requirement to import additional supplemental water supplies.

At its last meeting, the NCS D Board of Directors directed staff to bring the draft Resources Policy Statement before the Board at its next regular meeting for adoption. The draft Policy is scheduled to be adopted by the Board on April 8, 2015.

Please let me know if you have any additional questions or if you need more information.
Sincerely,

NIPOMO COMMUNITY SERVICES DISTRICT

A handwritten signature in black ink that reads 'Michael S. LeBrun'.

Michael S. LeBrun
General Manager

Enclosure(s): March 12 draft NCS D Water Resources Policy Statement

April 8, 2015

F

ATTACHMENT F

**NCSO Outreach Summary
March 2015**

Date Started	Outreach	Description	Status	Date Completed
2/28/2014	Brochure	Creation of "Detecting Leaks" insert for "Water Meter" brochure	In Progress	
6/5/2014	Emergency Information	Pre-written emergency communications for local news, website, online outlets	In Progress	
7/10/2014	Emergency Communication Plan	Development of District's Emergency Communications Plan	In Progress	
10/9/2014	Spanish Brochure	Translation of "13 Ways to Conserve Water at Home" brochure	In Progress	
2/19/2015	Manager's Column	Article 24 for Manager's Column in Adobe Press, pub date 1/30	Complete	2/20/2015
2/23/2015	Chamber Email Blast	Conservation Tip for Chamber of Commerce weekly email update	Complete	2/23/2015
2/24/2015	Conservation	Attended SB/SLO Counties Water Efficiencies Meeting	Complete	2/24/2015
2/26/2015	Chamber Newsletter	Conservation ad for Chamber of Commerce March newsletter	Complete	2/26/2015
2/2/2015	District Newsletter	2015 1st quarter newsletter for February distribution	Complete	2/27/2015
3/2/2015	Chamber Email Blast	Conservation Tip for Chamber of Commerce weekly email update	Complete	3/2/2015
3/2/2015	Ad	Conservation 1/4 page ad in 3/6 Adobe	Complete	3/2/2015
2/20/2015	Website Updates	Home page; minutes; photos; Manager's Column; press releases; etc	Complete; Ongoing	3/5/2015
2/20/2015	Social Media	Content posting	Complete; Ongoing	3/5/2015
2/18/2015	Supplemental Water Delivery	Outreach plan/schedule	Complete	3/9/2015
3/9/2015	Chamber Email Blast	Conservation Tip for Chamber of Commerce weekly email update	Complete	3/9/2015
10/1/2014	Spanish Brochure	Translation of "Tracking Water Use with Water Meters" brochure	Complete	3/13/2015
10/9/2014	Spanish Brochure	Translation of Toilet tab packets	Complete	3/16/2015

**NCSO Outreach Summary
March 2015**

Date Started	Outreach	Description	Status	Date Completed
3/16/2015	Ad	Conservation 1/4 page ad in 3/20 Adobe	Complete	3/16/2015
3/16/2015	Chamber Email Blast	Conservation Tip for Chamber of Commerce weekly email update	Complete	3/16/2015
3/6/2015	Brochure	Purchase of Easy Waterwise Landscaping magazine from Sunset Magazine	Complete	3/18/2015
3/16/2015	Notice	Publishing of Ordinance 2015-121 in Tribune and SM Times	Complete	3/18/2015
3/20/2015	Ad	Conservation 1/4 page ad in 4/3 Adobe	Complete	3/20/2015
2/20/2015	Community Outreach	District outreach at community event at St. Joseph Church's Festival 3/22	Complete	3/22/2015
3/16/2015	Promotion	Fix-A-Leak Week campaign on social media; information on website and at community event on 3/22	Complete	3/22/2015
3/23/2015	Chamber Email Blast	Conservation Tip for Chamber of Commerce weekly email update	Complete	3/23/2015
3/26/2015	Manager's Column	Article 25 for Manager's Column in Adobe Press, pub date 3/27	Complete	3/26/2015
3/28/2015	Chamber Newsletter	Conservation ad for Chamber of Commerce April newsletter	Complete	3/28/2015
3/30/2015	Chamber Email Blast	Conservation Tip for Chamber of Commerce weekly email update	Complete	3/30/2015
3/6/2015	Website Updates	Home page; minutes; calendar; community announcements; construction reports; compensation report; Supplemental Water Project page; etc	Complete; Ongoing	4/2/2015
3/6/2015	Social Media	Content posting	Complete; Ongoing	4/2/2015
3/18/2015	Drought Messaging	Development of District's messaging in response to State restrictions; publish information	In Progress	

**NCSO Outreach Summary
March 2015**

Date Started	Outreach	Description	Status	Date Completed
3/26/2015	Supplemental Water Delivery	Interview with City of SM regarding water quality messaging	In Progress	
3/31/2015	Supplemental Water Delivery	Update of Project FAQs	In Progress	
4/1/2015	Ad	District ad in 2015-2016 Nipomo Directory	In Progress	
4/2/2015	Press Release	Development of press release regarding District's response to Governor's Order on water restrictions	In Progress	
4/3/2015	District Newsletter	2015 2nd quarter newsletter for May distribution	In Progress	

Inside NCSD

MARCH 12, 2015 12:00 AM

With just enough rain to knock down the dust, our state and region remain in serious drought conditions.

As February came to a close, it seemed inevitable this rain year will be as dry as the last two and may be the driest in 120 years.

Rain recharges local groundwater, and local groundwater currently provides 100 percent of the Nipomo area's water supply.

The increase in water demand over time, coupled with low rainfall in recent years, has resulted in the area's groundwater dropping to the lowest level in our 30-year record.

Nipomo Community Services District's Supplemental Water Project, which will bring a new source of water to the Mesa, is progressing on schedule, with delivery of water anticipated this July.

The district continues to be in Drought Stage 2 of five stages. That means conservation is strongly encouraged, mainly through the water rate structure.

If you are an NCSD customer, the amount you pay for water increases as your use increases.

If the drought worsens, the district's elected board may need to consider "drought premiums" that would make it substantially more expensive to use water in the highest volume categories.

We still need everyone's help to protect our groundwater basin. District customers did a great job in 2014, ending the year with a 24-percent reduction in groundwater pumping. Below are some tips to consider as you continue to conserve.

What you can do:

- Rethink your landscaping choices; consider converting your lawn to a native shrub garden.
- If you have a drought-tolerant landscape already, don't water it from September through May and water once a month from June through August.
- Redouble your efforts to stop water waste in the home; shorter showers, fix that leaky faucet or toilet, capture "warming" water you run before your shower to use on plants.
- Learn how to use the water meter on your supply line to track water use.
- Talk it up with your neighbors and friends; share ideas on how to save water.

What have you done to conserve? If you have cut your water use, we want to hear from you.

Jessica Matson

From: Nipomo Chamber of Commerce <info@nipomochamber.org>
Sent: Monday, March 09, 2015 4:22 PM
To: Jessica Matson
Subject: Monday News, March 9 2015



Nipomo
CHAMBER OF
COMMERCE



Richard Malvarose
Chamber President
Nipomo Properties

Monday News

March 9, 2015

Nipomo Chamber
March Mixer

Thursday, March 12th
5:00-7:00pm

@

Nipomo Chamber of Commerce
239 W. Tefft St.

Hosted by
Well's Fargo Bank

Come mingle and network with community leaders and business partners and enjoy refreshments, door prizes, good friends and fun.

Nipomo Chamber of Commerce

Chamber Hours

Monday through Friday
9 am to 5 pm

239 W. Tefft St.
Nipomo, CA 93444

Office: 805.929.1583
Fax: 805.929.5835

info@nipomochamber.org

For Info Contact:

Amber Wilson
Executive Director
amber@nipomochamber.org

Platinum Sponsor

Rabobank
Nipomo

**President's Circle
Sponsors**

**Community Health
Centers**

Nipomo Recreation



NIPOMO
Community Services District

We are now on   /NipomoCSD

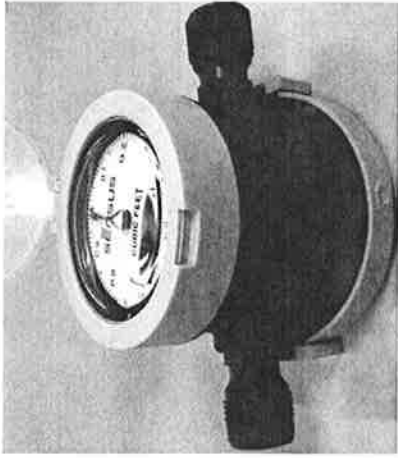
Saving water also saves money!

**With the time change, don't forget to check
your irrigation timers and sprinklers.**

REDUCE YOUR USE

For more information on how to reduce water use, visit
www.ncsd.ca.gov.

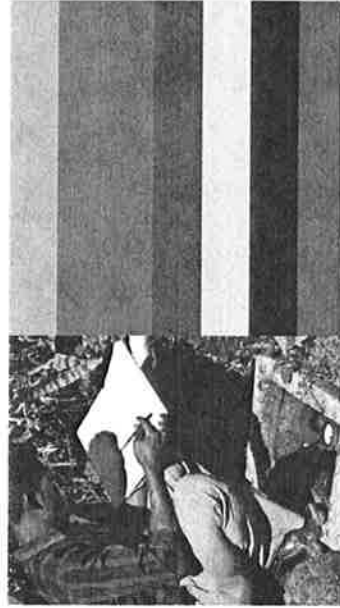
Now Accepting Auction



Ejemplo de un medidor de agua del Distrito

Los medidores de agua pueden ser una herramienta eficaz para la comprensión y seguimiento de su consumo de agua y detección de fugas.

Después de leer esta información, usted sabrá como utilizar el medidor para determinar si usted tiene una fuga de agua, y controlar su consumo total de agua.



<<< **Vease al interior sobre los pasos para leer y utilizar los medidores de agua**

Visítenos en línea

Nuestro sitio de internet Nipomo Community Services District ofrece consejos útiles sobre la lectura de medidores y detección de fugas.

Visite nuestra página de "Recursos" en www.ncsd.ca.gov

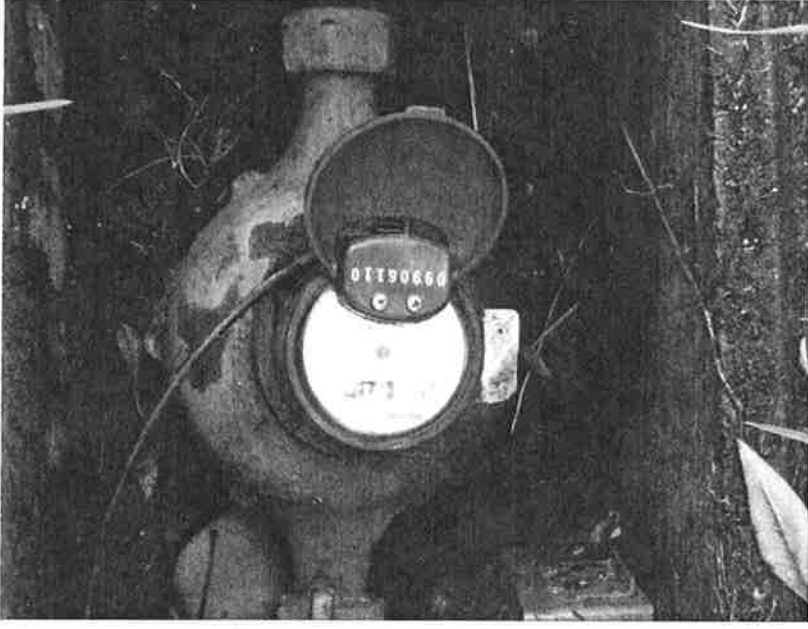
Para más información, comuníquese al (805)929-1133 o a nuestro correo electrónico info@ncsd.ca.gov

March 2015



148 S. Wilson Street
Nipomo, CA 93444

NIPOMO COMMUNITY SERVICES DISTRICT



EL SEGUIMIENTO DEL USO DE AGUA CON MEDIDORES DE AGUA



NIPOMO COMMUNITY SERVICES DISTRICT

Medidores de agua como una herramienta

El Distrito instala y mantiene un medidor de agua en cada punto de conexión del cliente al sistema de agua. El Distrito lee el medidor cada dos meses para fines de facturación.

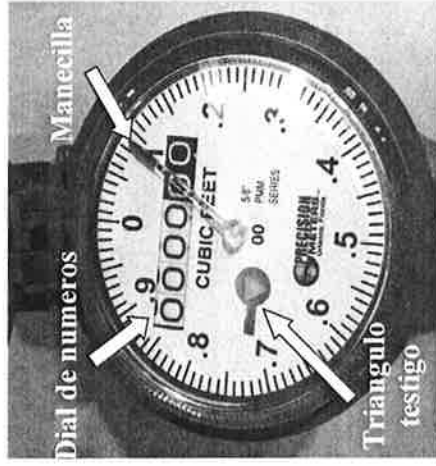
Los clientes pueden utilizar este mismo medidor como una herramienta precisa para medir el uso del agua y la detección de fugas.

El seguimiento de su consumo de agua >>>

Usted puede seguir su uso de agua mediante la lectura del medidor de tiempo en tiempo (semanal, por ejemplo) y calculando la cantidad de agua utilizada durante ese período. Usted puede leer el medidor de agua antes y después del riego y medir exactamente lo que se está usando y dónde.

La detección de fugas >>>

Los medidores tienen un pequeño triángulo 'Testigo' en la cara del medidor (ver más abajo) que se mueve si la más mínima de flujo está presente. Apague todos sus aparatos que utilizan agua y cierre las válvulas de agua. Si este triángulo se sigue moviendo, todo el agua no está apagada y/o usted tiene una fuga. Ahora puede empezar a buscar la fuga.

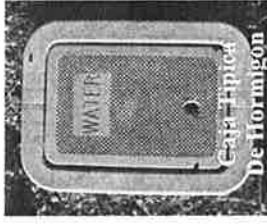


Nota:
Siempre tenga cuidado al acceder el medidor de agua. Si necesita ayuda, comuníquese con el Distrito al 929-1133.

La lectura de medidores de agua - Tan fácil como 1, 2, 3

1. Levante la tapa de la caja del medidor y abra la tapa del medidor >>>

Levante con cuidado la tapa de la caja y quítelo del camino. El Distrito cuenta con diferentes tipos de cajas de medidores, dependiendo de la ubicación del medidor. Cajas típicas de los medidores son de hormigón o metal. Vease abajo. La tapa del medidor cubre la cara del medidor. Para leer los dígitos, levante la tapa y localice la cara del medidor.



2. Leer los dígitos >>>

La cara del medidor tendrá una fila de números similar a un odómetro del coche, una manecilla, y un triángulo 'Testigo'. Las caras de los medidores varían. Un medidor típico se muestra a continuación. A la más lejana mano derecha en la fila de números, son números blancos sobre un fondo negro. Estos marcan unidades y decenas de pies cúbicos. Cada vez que la manecilla gira una vuelta completa, 1 pie cúbico de agua pasa a través del medidor y los números más lejanos a la derecha aumentan por uno.

Nota: 1 pie cúbico es equivalente a 7,48 galones de agua.

Los números negros sobre un fondo blanco marcan centenas de pies cúbicos. Por ejemplo:



Anote TODOS los números de la línea;

esto es **Registro #1 (514828)**.

Deje correr su sistema de riego y/o espere una semana.
Registre de nuevo TODOS los números;
esto es **Registro #2 (515313)**.

Reste el registro # 1 del registro # 2 (515313-514828); esto es igual a los pies cúbicos usados (485). Multiplique este número por 7,48 para obtener galones usados (3627).



3. Cierre la tapa del medidor y reemplaze la tapa de la caja del medidor >>>

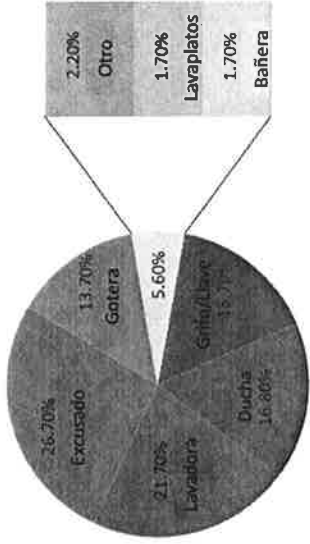
Una vez terminado de leer el medidor, cierre la tapa. Vuelva a colocar cuidadosamente la tapa de la caja del medidor y asegúrese de que la tapa esté segura.

La Lectura del Medidor y Facturación

Los medidores de agua se registran en pies cúbicos, pero las facturas del Distrito son en incrementos de 100 pies cúbicos, o "unidades". Basado en el ejemplo anterior, el cliente se facturaRA 5 "unidades" de agua: (485 pies cúbicos ÷ 100 = 4,85 o redondeado a 5 unidades)

7,48 galones = 1 pie cúbico 748 galones = 100 pies cúbicos = 1 unidad de agua para fines de facturación
En un ciclo de facturación de dos meses, el cliente promedio del Distrito utiliza 36 unidades de agua que equivale a aproximadamente 27.000 galones de agua (36 unidades x 748 galones). El Distrito vende 1 unidad de agua (748 galones) por alrededor de \$3, que sale a menos de medio centavo por galón.

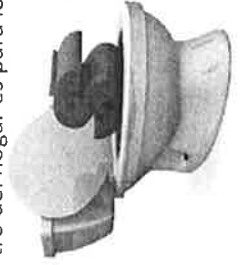
El Uso de Agua Dentro de la Casa



DENTRO HAY UN DISPOSITIVO PARA DETECTAR FUGAS. REALMENTE.

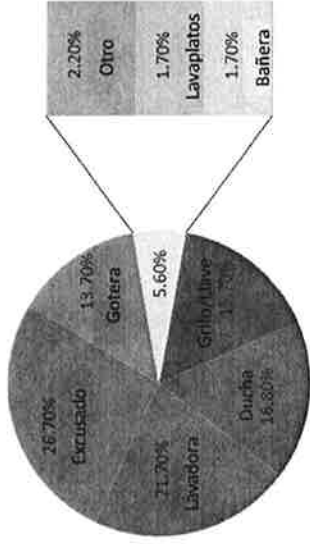
Un excusado que gotea puede desperdiciar GALONES por día.

El porcentaje mas alto de uso de agua dentro del hogar es para los excusados: 26%



Cuando un excusado tiene fugas, puede ser mucho mas!

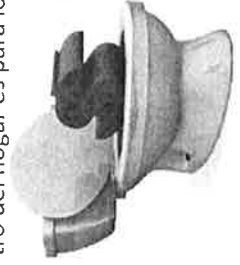
El Uso de Agua Dentro de la Casa



DENTRO HAY UN DISPOSITIVO PARA DETECTAR FUGAS. REALMENTE.

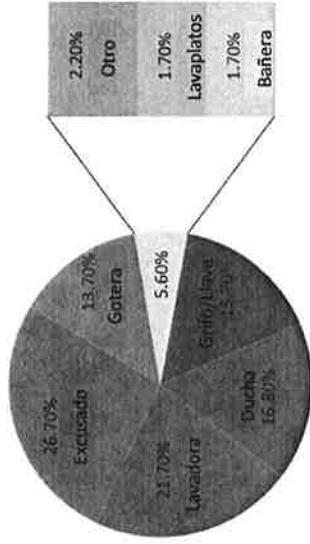
Un excusado que gotea puede desperdiciar GALONES por día.

El porcentaje mas alto de uso de agua dentro del hogar es para los excusados: 26%



Cuando un excusado tiene fugas, puede ser mucho mas!

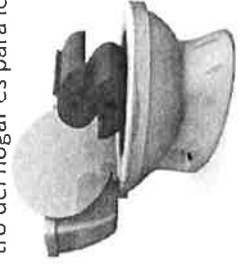
El Uso de Agua Dentro de la Casa



DENTRO HAY UN DISPOSITIVO PARA DETECTAR FUGAS. REALMENTE.

Un excusado que gotea puede desperdiciar GALONES por día.

El porcentaje mas alto de uso de agua dentro del hogar es para los excusados: 26%



Cuando un excusado tiene fugas, puede ser mucho mas!

Cada Gota Cuenta.

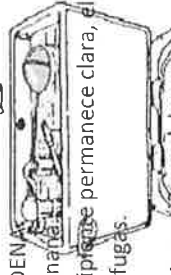
Los excusados que gotean desperdician agua y le cuesta dinero.

Los excusados son la fuente mas comun de fugas y pueden desperdiciar hasta **75 galones de agua por dia.**

Use estas tabletas para detectar los excusados que gotean. Siga las instrucciones abajo.

Instrucciones

1. En la noche, antes de acostarse, cuidadosamente quite la tapa del deposito y coloque una tablet de tinte en el tanque.
2. **NO TIRE DE LA CADENA.**
3. Espere hasta la mañana.
4. Si el agua en el recipiente permanece clara, el excusado no tiene fugas.



Si el agua en el recipiente se tinte azul, hay una fuga en el tanque. La reparacion puede ser muy simple. Aprenda como hacerle usted mismo, pero si tiene alguna duda, hable con un plomero!



Nipomo Community
Services District
148 S. Wilson St, Nipomo, CA
93444

929-1133 | www.ncsd.ca.gov

Cada Gota Cuenta.

Los excusados que gotean desperdician agua y le cuesta dinero.

Los excusados son la fuente mas comun de fugas y pueden desperdiciar hasta **75 galones de agua por dia.**

Use estas tabletas para detectar los excusados que gotean. Siga las instrucciones abajo.

Instrucciones

1. En la noche, antes de acostarse, cuidadosamente quite la tapa del deposito y coloque una tablet de tinte en el tanque.
2. **NO TIRE DE LA CADENA.**
3. Espere hasta la mañana.
4. Si el agua en el recipiente permanece clara, el excusado no tiene fugas.



Si el agua en el recipiente se tinte azul, hay una fuga en el tanque. La reparacion puede ser muy simple. Aprenda como hacerle usted mismo, pero si tiene alguna duda, hable con un plomero!



Nipomo Community
Services District
148 S. Wilson St, Nipomo, CA
93444

929-1133 | www.ncsd.ca.gov

Cada Gota Cuenta.

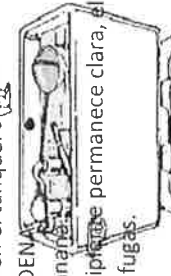
Los excusados que gotean desperdician agua y le cuesta dinero.

Los excusados son la fuente mas comun de fugas y pueden desperdiciar hasta **75 galones de agua por dia.**

Use estas tabletas para detectar los excusados que gotean. Siga las instrucciones abajo.

Instrucciones

1. En la noche, antes de acostarse, cuidadosamente quite la tapa del deposito y coloque una tablet de tinte en el tanque.
2. **NO TIRE DE LA CADENA.**
3. Espere hasta la mañana.
4. Si el agua en el recipiente permanece clara, el excusado no tiene fugas.



Si el agua en el recipiente se tinte azul, hay una fuga en el tanque. La reparacion puede ser muy simple. Aprenda como hacerle usted mismo, pero si tiene alguna duda, hable con un plomero!



Nipomo Community
Services District
148 S. Wilson St, Nipomo, CA
93444

929-1133 | www.ncsd.ca.gov

Students get Arbor Day lessons from PG&E

STAFF REPORT

As California celebrated Arbor Week from March 7 to 14, Pacific Gas and Electric Co. hosted a series of events that included educational programs with local school children.

Justin Kephart, Vegetation Program manager for PG&E, visited eight schools in Lucia Mar Unified School District to prepare students for Arbor Day on Friday, April 24.

Students learned about what trees mean to the environment and the community — providing

oxygen, wood products, fruit and more.

The students worked to identify various types of trees, their age and the proper place to plant them — never near power lines.

"Trees are a vital part of California's natural beauty, and PG&E appreciates the many benefits they offer to communities," said Pat Malen, PG&E's local division director.

"In addition to beautifying property, cooling the air, the right tree planted in the right place — can help improve public

safety by keeping PG&E electric and other utility services like gas and water clear for first responders and our crews and reducing the likelihood that branches or limbs will contact an energized power line," he said.

To celebrate Arbor Week, PG&E partnered with the National Fish and Wildlife Foundation to plant more than 33,000 trees in the wildfire-stricken Los Padres National Forest — one for each customer who enrolled in paperless billing since Jan. 1.



Justin Kephart, Vegetation Program manager for PG&E, works with Lucia Mar Middle School students to identify types of trees during an Arbor Day presentation.

CONTRIBUTED

ORCHID

FROM PAGE A1

of growing — and displaying his prized beauties, oftentimes one-of-a-kind plants, at such area shows as the upcoming Five Cities Orchid Society event.

The society is staging its 20th annual Central Coast Orchid Show and Sale from March 27 to 29 in the South County Regional Center, 800 W. Branch St., Arroyo Grande.

The popular three-day event will include orchid culture and repotting

demonstrations, and "plant doctors" will also be on hand to provide tips and information to help novice growers keep their orchids alive and blooming.

"Too much water, that's the No. 1 reason (people kill orchids)," Stocks said, noting watering changes with the temperature, which is why there's a simple rule of thumb for success when it comes to watering: If the pot is heavy, don't water, and if it's light, then the plant is likely thirsty.

"Orchids also grow in bark. They don't grow in dirt," he explained. "People will say, 'Oh, I have had this orchid for five years and it was doing great, now it's dead.' They probably have a pot of dirt ... the roots can't breathe."

In addition to learning growing tips and techniques at the show and sale, individuals can peruse and purchase various orchid books and orchid growing supplies

that will be on sale, or well as a wide variety of orchids.

The annual show also features numerous live displays usually centered around the event's theme, which this year is "Orchid Jubilee: Celebrating 20 years." Stocks is planning to contribute about 30 of his prized plants to the Orchid Society's display planned for the show.

He has been a member of the group for about 10 years.

Exhibited plants will be judged by American Orchid Society members as well as Five Cities Orchid Society members.

Awards will be presented during a Friday night benefit show and reception, where food and wine will be served and attendees will get first pick of orchids for sale.

Once again, a portion of the proceeds from the benefit event will go to the Guadalupe-Nipomo Dunes Center to help fund the educational programs offered by the nonprofit organization, which is supported solely through grants and donations.

SCAC

FROM PAGE A1

elect people from those areas to fill the seats until the next annual election.

In Area 1, unopposed candidates for the two open positions were Vincent D. McCarthy, the incumbent, and Michael D. Pieper.

Area 2 had one open position, with incumbent Dan Woodson the only candidate.

Area 4 had two open positions but only one candidate, David S.

Niken, who will fill one seat. The other seat will remain vacant, Cholakian said.

No one applied to run for the single vacancies in areas 5 and 7.

Other citizens still serving unexpired terms on SCAC are Harry Webb for Area 2, Sandra Campbell for Area 3, Gary Spelling for Area 5, Art Herbon for Area 6, Cholakian for Area 7 and Richard Wright representing public safety.

For more information, visit the SCAC website at <http://scac.ca.gov>.

DANA

FROM PAGE A1

looking out of the window and to the Temetate Ridge," Washburn said. "Now look at the logo. The blue border is the window frame, and the golden and brown hills beyond are what you see in the fall of the year."

"The bell reminds us that Rancho Nipomo was a working rancho, and a bell such as this may have called all hands to dinner," she continued. "The bell image also reminds us of the adobe's

location near El Camino Real, the great byway connecting missions and ranchos of Alta California.

"This greater view of the rancho evokes the hardworking Dana family's efforts to carve a place in this frontier land and invites visitors to look beyond their home to the land on which the Chumash walked and animals long-gone roamed."

The DANA Cultural Center will provide tours of the grounds, the Dana Adobe and a Chumash interpretive area, Washburn said.

Visitors will be able to walk trails informing them about ecological changes that resulted in the disappearance of some animals and plants and the introduction of others, and artistic and scientific displays in the center will encourage visitor participation.

Washburn said the public is invited to a free talk at 2 p.m. Saturday, March 21, when she will discuss the development of the museum and 130-acre park surrounding the adobe.

Her presentation will include the state-of-the-art design of the Naturo Education Facility slated for construction this fall, planned interpretive programs and the vision for other park elements currently in design.

The Dana Adobe at 671 S. Ouelgen Ave. will be open for house tours from 1 to 4 p.m. Saturday and Sunday. Plans and proposals for the park and visitor center are on display in Room 1.

Admission is free for children, students with ID and members of DANA and North American Reciprocal Museums and a \$5 donation for all others. Parking is free.

For more information, call the DANA office at 929-5679 or visit www.danaadobe.org.

Law Offices of Guy W. Murray
 Will's • Trusts • Probate
 Personal Injury • Litigation
805-929-7150
www.GuyMurrayLaw.net
 Serving the Entire Central Coast
 671 West Jeff Street, Suite 3 • NIPOMO

Brian Beres D.D.S.
 NEW PATIENTS WELCOME
 We are pleased to provide quality preventive, restorative and cosmetic dentistry in a comfortable atmosphere for children and adults.
929-3277
 251 N. Wilson, Suite A
 Nipomo
 Insurance claims accepted or we will pay for you!

WaterSense
March 16-22, 2015
Fix a Leak Week
Save water, save money!
 Check your sprinklers in the spring, summer and fall. Turn on the valve and look for:

- Symptoms of Poor Maintenance:**
 - Erosion
 - Water runoff and swampy areas
 - Obstructions of spray
 - Plants performing poorly
 - Water spraying on the street or sidewalk
- Problems with Sprinkler Heads and Valves:**
 - Head clogged, leaking, or broken
 - Valve leaking
 - Plants blocking sprinkler
 - Head pushed too far into the ground or spraying in the wrong direction
 - Sprinkler spacing not providing even coverage on turf grass
- Low Water Pressure:**
 - Pop-up stem not extending
 - Spray not reaching intended watering area
 - Doughnut shaped dry areas in turf
- High Water Pressure:**
 - Pipe keeps breaking
 - Sprinkler nozzles blown off
 - Spray is misting or fogging or spray is overshooting desired area

For more information and tips, feel free to contact the Nipomo Community Services District at 929-1133 or visit us online at www.ncsd.ca.gov

Water for Water
 NipomoCSD

Welcome Home Veteran's BBQ
 Saturday, March 21, 2015
 -Dinner/Entertainment at 11:30 am-
 Location:
Veterans Memorial Building
 501 N. Pine St., Santa Maria, Ca. 93458
 Serving Time: 12:00 PM to 3:00 pm
 (Donation of \$10 per plate)
 Bar-B-Que Includes: To-Go BBQ, Beans, Salad, Bread, Soft Drink or Water
 Sponsored by: American Veterans United, Inc.
 P.O. Box 648, Santa Maria, Ca. 93456-0648
 A California Non-Profit Corporation
 All Proceeds will benefit the AVU Corporation
 For more information regarding this fundraiser, please contact AVU Director Fred Secada at (805)925-8320

DONNA'S OPEN 7 DAYS
 Family Owned and Operated Since 1982

Dining Room
 Sofas
 Bedroom

Recliners
 Sleepers
 Entertainment

Home Office
 Accessories
 Mattresses

A Fresh Experience with Every Visit!

Mon-Sat 10am - 6pm • Sun Noon - 5pm
805-489-8533
 1069 E. Grand Ave • Arroyo Grande
www.donnasinteriors.com

KIDS DAY

FROM PAGE A1

The egg hunts will be followed by the Kids Day festival that will offer bounce houses, face painting, carnival games, vendor booths, entertainment and a barbecue.

Admission is free, but heavy rain will cancel the event. For more information, call 929-5437 or visit www.nipomorecreation.org.

Jessica Matson

From: Nipomo Chamber of Commerce <info@nipomochamber.org>
Sent: Monday, March 16, 2015 3:27 PM
To: Jessica Matson
Subject: Monday News, March 16, 2015



Nipomo
CHAMBER OF
COMMERCE



Richard Malvarose
Chamber President
Nipomo Properties

Monday News

March 9, 2015

Nipomo Chamber of Commerce

TMT Breakfast Club

Tuesday, March 17th
8:00am

@

Willow Market
1050 Willow Rd.

Nipomo
Corner of Pomeroy & Willow Rd.

Monthly Tuesday Morning Toast Breakfast Club provides a great opportunity to meet and connect with members of the Nipomo Chamber's business community and enjoy a casual and informal setting where you can network, market your business products & services and increase your referral base! Full menu available so enjoy a morning treat of your choosing and enjoy this simple and fun program. No RSVP required

Chamber Hours

Monday through Friday
9 am to 5 pm

239 W. Tefft St.
Nipomo, CA 93444

Office: 805.929.1583
Fax: 805.929.5835

info@nipomochamber.org

For Info Contact:

Amber Wilson
Executive Director
amber@nipomochamber.org

Platinum Sponsor

Rabobank
Nipomo

**President's Circle
Sponsors**

Community Health
Centers

Nipomo Recreation



March 16-22, 2015

Fix a Leak Week



Save water, save money!

Check your sprinklers in the spring, summer and fall.
Turn on the valve and look for:

Symptoms of Poor Maintenance:

1

- Erosion
- Water runoff and swampy areas
- Obstructions of spray
- Plants performing poorly
- Water spraying on the street or sidewalk

Problems with Sprinkler Heads and Valves:

2

- Head clogged, leaking, or broken
- Valve leaking
- Plants blocking sprinkler
- Head pushed too far into the ground or spraying in the wrong direction
- Sprinkler spacing not providing even coverage on turf grass

3

Low Water Pressure:

- Popup stem not extending
- Spray not reaching intended watering area
- Doughnut shaped dry areas in turf

4

High Water Pressure:

- Pipe keeps breaking
- Sprinkler nozzles blown off
- Spray is misting or fogging or spray is overshooting desired area

For more information and tips, feel free to contact
the Nipomo Community Services District at
929-1133 or visit us online at www.ncsd.ca.gov



NipomoCSD

THE *Newspaper of the Central Coast*
TRIBUNE

3825 South Higuera • Post Office Box 112 • San Luis Obispo, California 93406-0112 • (805) 781-7800

In The Superior Court of The State of California
In and for the County of San Luis Obispo
AFFIDAVIT OF PUBLICATION

AD # 1625152
NIPOMO CSD

STATE OF CALIFORNIA

ss.

County of San Luis Obispo

I am a citizen of the United States and a resident of the County aforesaid; I am over the age of eighteen and not interested in the above entitled matter; I am now, and at all times embraced in the publication herein mentioned was, the principal clerk of the printers and publishers of THE TRIBUNE, a newspaper of general Circulation, printed and published daily at the City of San Luis Obispo in the above named county and state; that notice at which the annexed clippings is a true copy, was published in the above-named newspaper and not in any supplement thereof – on the following dates to wit; MARCH 19, 2015 that said newspaper was duly and regularly ascertained and established a newspaper of general circulation by Decree entered in the Superior Court of San Luis Obispo County, State of California, on June 9, 1952, Case #19139 under the Government Code of the State of California.

I certify (or declare) under the penalty of perjury that the foregoing is true and correct.


(Signature of Principal Clerk)

DATED: MARCH 19, 2015
AD COST: \$171.76

ORDINANCE NO. 2015-121

**AN ORDINANCE OF THE NIPOMO
COMMUNITY SERVICES DISTRICT
REPEALING SECTIONS 3.05.10
THROUGH 3.05.060 AND 3.05.060
THROUGH 3.05.170, WATER
ALLOCATION POLICY, OF THE
DISTRICT CODE**

NOTICE IS HEREBY GIVEN that the Nipomo Community Services District Board of Directors, at its Regular Meeting of February 25, 2015, introduced the above titled Ordinance, and at its Regular meeting of March 11, 2015, conducted a public hearing to obtain public testimony, and adopted the above titled Ordinance, upon a motion by Director Blair, second by Director Armstrong, and on the following roll call vote:

AYES: Directors Blair, Armstrong, Eby, Woodson, and Gaddis

NOES: None

Ordinance No. 2015-121 - This is a District Ordinance repealing District Code Sections 3.05.10 through 3.05.060 and 3.05.80 through 3.05.170, Water Allocation Policy. The Nipomo Community Services District ("District") provides water service within the District's water service area pursuant to \$61100(a) of the Community Services District Law, and it is essential for the protection of the health, welfare, and safety of the residents of the Nipomo Community Services District ("District"), and the public benefit of the State of California ("State"), that the groundwater resources of the Nipomo Mesa be conserved. The Nipomo Community Services District is a party to a groundwater adjudication, Santa Maria Valley Water Conservation District v. City of Santa Maria, etc et al, Case No CV 770214. The District agreed to purchase an additional 500 acre feet per year of supplemental water to water in-fill development within District boundaries pursuant to the Stipulated Judgment, and is currently constructing a supplemental water pipeline and expects delivery of supplemental water in Summer 2015. The current allocation ordinance is no longer applicable.

A full and complete copy of the aforementioned Ordinance is available for inspection and copy at the District's office, located at 148 South Wilson Street, Nipomo, California, or you may call (805) 929-1133 for more information.
March 18, 2015

1625152

*** Proof of Publication ***

PROOF OF PUBLICATION
(2015.5 C.C.P.)

STATE OF CALIFORNIA.

SANTA MARIA TIMES

NIPOMO COMMUNITY SERV DISTRICT
PO BOX 326
NIPOMO, CA 93444

ORDER NUMBER 52363

I AM THE PRINCIPAL CLERK OF THE PRINTER OF THE SANTA MARIA TIMES, NEWSPAPER OF GENERAL CIRCULATION, PRINTED AND PUBLISHED IN THE CITY OF SANTA MARIA, COUNTY OF SANTA BARBARA, AND WHICH NEWSPAPER HAS BEEN ADJUDGED A NEWSPAPER OF GENERAL CIRCULATION BY THE SUPERIOR COURT OF THE COUNTY OF SANTA BARBARA, STATE OF CALIFORNIA, ADJUDICATION #463687.

THAT THE NOTICE OF WHICH THE ANNEXED IS A PRINTED COPY (SET IN TYPE NOT SMALLER THAN NONPAREIL), HAS BEEN PUBLISHED IN EACH REGULAR AND ENTIRE ISSUE OF SAID NEWSPAPER AND NOT IN ANY SUPPLEMENT THEREOF ON THE FOLLOWING DATES, TO-WIT:

I CERTIFY (OR DECLARE) UNDER PENALTY OF PERJURE THAT THE FOREGOING IS TRUE AND CORRECT.

PUBLISHED ON: 03/17/2015

TOTAL AD COST: 148.50

FILED ON: 3/17/2015

DATED AT SANTA MARIA, CA THIS 17th DAY OF Mar 20 15

SIGNATURE

Deresa Ramirez

ORDINANCE NO. 2015-121

AN ORDINANCE OF THE NIPOMO COMMUNITY SERVICES DISTRICT REPEALING SECTIONS 3.05.10 THROUGH 3.05.060 AND 3.05.080 THROUGH 3.05.170, WATER ALLOCATION POLICY, OF THE DISTRICT CODE

NOTICE IS HEREBY GIVEN that the Nipomo Community Services District Board of Directors, at its Regular Meeting of February 25, 2015, introduced the above titled Ordinance, and at its Regular meeting of March 11, 2015, conducted a public hearing to obtain public testimony, and adopted the above titled Ordinance, upon a motion by Director Blair, second by Director Armstrong, and on the following roll call vote:

AYES: Directors Blair, Armstrong, Eby, Woodson, and Gaddis

NOES: None

Ordinance No. 2015-121 - This is a District Ordinance repealing District Code Sections 3.05.10 through 3.05.060 and 3.05.080 through 3.05.170, Water Allocation Policy. The Nipomo Community Services District ("District") provides water service within the District's water service area pursuant to §61100(a) of the Community Services District Law, and it is essential for the protection of the health, welfare, and safety of the residents of the Nipomo Community Services District ("District"), and the public benefit of the State of California ("State"), that the groundwater resources of the Nipomo Mesa be conserved. The Nipomo Community Services District is a party to a groundwater adjudication, Santa Maria Valley Water Conservation District v. City of Santa Maria, et al, Case No CV 770214. The District agreed to purchase an additional 500 acre feet per year of supplemental water to water in-fill development within District boundaries pursuant to the Stipulated Judgment, and is currently constructing a supplemental water pipeline and expects delivery of supplemental water in Summer 2015. The current allocation ordinance is no longer applicable.

A full and complete copy of the aforementioned Ordinance is available for inspection and copy at the District's office, located at 148 South Wilson Street, Nipomo, California, or you may call (805) 929-1133 for more information.

Legal #52363
Pub date: March 17, 2015

RECEIVED
MAR 20 2015
NIPOMO COMMUNITY SERVICES DISTRICT

OPINION

Beware of water leaks on your property

Do you have an undetected leak on your property? Nipomo Community Services District reads water meters once every two months for billing purposes.

If a leak develops on the customer side of the meter and goes undetected until the next regular meter reading, large amounts of water could be consumed by the customer, leading to large water bills.

How large is "large"? In the past year, I have seen five or more water bills in excess of \$2,000. In all cases the culprit was an undetected leak, and in nearly all cases the customer couldn't believe so much water could have been consumed undetected on their property.

Most of those extreme cases involved landscape irrigation systems



Inside NCS D
Michael LeBrun

— including lateral lines to remote hose connections.

On this sand dune we affectionately call "The Mesa," water infiltrates very quickly, and even large leaks can go undetected.

Many smaller leaks or simply overwatering occur routinely in many homes.

Another tough-to-detect leak can occur within water softening equipment when system flushing occurs excessively or continuously.

A customer's best defense against a major water leak and a devastating water bill is knowledge. If you have an irrigation system or water softener, make sure someone in the home is familiar with its operation and is checking it and making seasonal adjustment.

Tune in to your typical household water use so you know if and when the use is up unexpectedly. Reading the meter is easy, and a weekly read will quickly tell you if a leak has developed in your system.

The district has helpful information about how to read your meter. Visit us online or stop by the office.

Water is precious and money is hard-earned — let's do all we can to save all we can.

What have you done to conserve? If you have cut your water use, we want to hear from you. Additionally, if you have converted your landscape to native, drought-tolerant plants, we want to hear from you.

You may be featured in upcoming district communications.

Contact the District at info@ncsd.ca.gov.

Michael LeBrun is the general manager of the Nipomo Community Services District. He can be reached by calling 929-1133 or by email at info@ncsd.ca.gov. Follow NCS D on Facebook or Twitter at NipomoCSD.

RUBES



LETTERS TO THE EDITOR

Just two choices during drought

This used to be the wet season. We are in a terrible drought.

We need a moratorium on growth or to build a desalination plant ASAP.

Bill Deemeen Nipomo

Some real benefits for taxpayers

What a breath of fresh air to read a recent letter about "Finking gold..."

Taxpayers are usually

so busy complaining and whining about having to pay taxes, we forget about the benefits and advantages we receive from them.

Thanks, reader, for the reminder.

Joanna Berke Nipomo

KRANKY



Growing Grounds plans Tomato Fandango

The folks at Growing Grounds Farm in Santa Maria and Growing Grounds Downtown in San Luis Obispo will host the Tomato Fandango and Spring Festival from noon to 4 p.m. Saturday, April 25, selling plants, including more than 35 varieties of beautiful tomatoes along with an abundance of other vegetable starts and ornamentals for your garden.

Both of the programs support and are operated by Transitions — Mental Health Association.

The event will be held at the Tiber Canyon Ranch, 280 W. Ormonde Road in San Luis Obispo.

If you can't make it to the Fandango but want to buy plants, they will also be available at Rutis Family Farms in Arroyo Grande and at the Growing Grounds Downtown store, 956 Chorro St., San Luis Obispo, and Growing Grounds Farm, 820 W. Foster Road, Santa Maria.

It is that time of year again to support the American Cancer Society's Relay for Life. This year it will be held in Nipomo from 10 a.m. to 10 p.m. Saturday, April 18, at the Nipomo High School track.



Bits and Pieces of Nipomo
Jacqueline Vittit Frederick

People who are cancer survivors, friends of cancer survivors and supporters walk the track and raise funds by asking people to donate to participants for each lap.

For more information on becoming a sponsor, operating a vendor booth or joining a team, call Debbie Jeffers at Debbie.jeffers@facebook.com.

Healing Touch Day Spa will host a Nipomo Chamber of Commerce mixer from 5 to 7 p.m. Thursday, April 9, at 180 Mary Ave., Nipomo.

This is an opportunity to visit the facility and network with other business owners while

enjoying good food, beverages and door prizes.

Fiesta Latina will be held from 5 to 10 p.m. Friday, April 24, at the Edwards Barn located at Pomero and Willow roads in Nipomo.

Tickets can be purchased at the Frederick Law Firm in Olde Towne Nipomo or by calling the Latino Outreach Council at 598-6083.

One of the best golf tournaments on the Central Coast is coming up Friday, May 8, at the Monarch Dunes Golf Club.

The Nipomo Rotary Club's **Mesa Oaks Rotary Charity Classic Golf Tournament** always sells out, so now is the time to sign up your team to participate.

The four-person scramble shotgun start will be at 10:30 a.m. A wine wagon and beer barrel raffle as well as Vegas-style games, prizes, drawings and an awards banquet are planned.

For more information, contact Bill Pucirelli at 264-4033 or GolfNipomoRotary@comcast.net.

Jacqueline Frederick is a lawyer and farmer in Nipomo and can be reached at jpf@jlawfirm.com or 929-1120.

120 S. MESA ROAD - Gorgeous Mesa View Estate home, offering approximately 2200 sq. ft. with 4 bedrooms and 2 bathrooms. Home offers beautiful mature landscaping with fruit trees, panoramic views of the Nipomo Mountains from your living room and front porch area. Endless pool and fenced with iron gates, large open kitchen, formal living room, fireplace and detailed Spanish tile. Don't miss the opportunity to live in this desired area. \$520,000

Yolanda Perez
(805) 748-7514
BRE#01741813

Holy Week Worship Services at NCPC

Good Friday Service NCPC
Friday, April 3 7 PM

Easter Sunrise Service
Sunday, April 5 6:30 AM

Easter Service
Sunday, April 5 10:30 AM

Easter egg hunt after worship!

Nipomo Community Presbyterian Church
2335 Camino del Sur, Nipomo, CA 93450
478.8029 info@ncpc.org

Beautiful Home in Fourwinds Estates with Penthouse & Permitted Guest Quarter Price of \$1,000,000. This Expansive Property with 3 bedrooms, 4 Bath, 3355 Sq Ft. Private & Lush Backyard.

Terrific Home With Land in Desirable 55+ Knollwood Village Senior Park Corner Lot Plan, 3 Bedrooms, 2 Baths, 2 Car Attached Garage, Fabulous Finished 3 Year New Refrigerator, Washer/Dryer Included, Spacious & Charming Patio/Drop System Thru-Out Landscaping \$219,000.

Diane Adams
805.570.9099
LIC #01103806

BROWN is the new GREEN.

REDUCE YOUR USE!

Our water supply is threatened.

www.ncsd.ca.gov

f /NipomoCSD

Nipomo Community Services District

St. Joseph Church's Festival, 3/22/15



Jessica Matson

From: Nipomo Chamber of Commerce <info@nipomochamber.org>
Sent: Monday, March 23, 2015 3:21 PM
To: Jessica Matson
Subject: Monday News, March 23, 2015



Nipomo
CHAMBER OF
COMMERCE



Richard Malvarose
Chamber President
Nipomo Properties

Monday News

March 23, 2015

Nipomo Chamber of Commerce

March Luncheon

Connie Framberger

President - Framberger Employee Benefits & Insurance Services, Inc.

Healthcare Update for Employers

Thursday, March 26th

11:45

@

Blacklake Golf Resort

1490 Golf Course Ln

Nipomo

Please RSVP with Menu Selection

Taco Salad w/black beans, green chili, tomato, onion, black olives, sour

Chamber Hours

Monday through Friday
9 am to 5 pm

239 W. Tefft St.
Nipomo, CA 93444

Office: 805.929.1583

Fax: 805.929.5835

info@nipomochamber.org

For Info Contact:

Amber Wilson
Executive Director

amber@nipomochamber.org

Platinum Sponsor

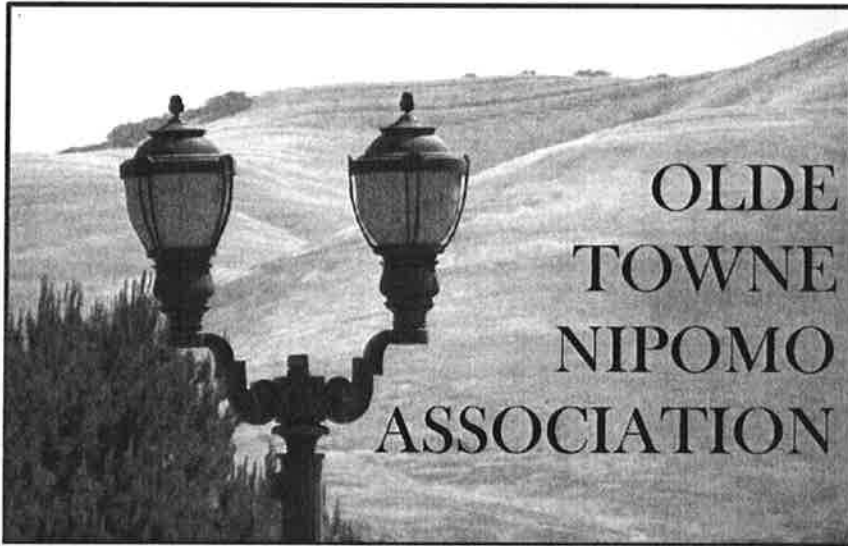
Rabobank

Nipomo

**President's Circle
Sponsors**

**Community Health
Centers**

Nipomo Recreation



**OLDE
TOWNE
NIPOMO
ASSOCIATION**

Want to get involved?

*Group meets the first and third Wednesday of each month at the
Nipomo Chamber of Commerce*

11:30am

239 W. Tefft St.

Nipomo

*OTNA's Non Profit Group of Nipomo residents, business owners and
ranchers are dedicated to maintaining and improving the area known
as Olde Towne Nipomo*

**Does Your Landscape Have a
DRINKING PROBLEM?**





REDUCE YOUR USE!

For tips go to our website: www.ncsd.ca.gov

Nipomo Community
Services District



  /NipomoCSD

Now Accepting Auction

Inside NCSD: Beware of water leaks on your property

MARCH 30, 2015 5:04 PM

Do you have an undetected leak on your property?

Nipomo Community Services District reads water meters once every two months for billing purposes. If a leak develops on the customer side of the meter and goes undetected until the next regular meter reading, large amounts of water could be consumed by the customer, leading to large water bills.

How large is “large”? In the past year, I have seen five or more water bills in excess of \$2,000.

In all cases the culprit was an undetected leak, and in nearly all cases the customer couldn't believe so much water could have been consumed undetected on their property.

Most of those extreme cases involved landscape irrigation systems — including lateral lines to remote hose connections.

On this sand dune we affectionately call “The Mesa,” water infiltrates very quickly, and even large leaks can go undetected. Many smaller leaks or simply overwatering occur routinely in many homes.

Another tough-to-detect leak can occur within water softening equipment when system flushing occurs excessively or continuously.

A customer's best defense against a major water leak and a devastating water bill is knowledge. If you have an irrigation system or water softener, make sure someone in the home is familiar with its operation and is checking it and making seasonal adjustments.

Tune in to your typical household water use so you know if and when the use is up unexpectedly. Reading the meter is easy, and a weekly read will quickly tell you if a leak has developed in your system.

The district has helpful information about how to read your meter. Visit us online or stop by the office.

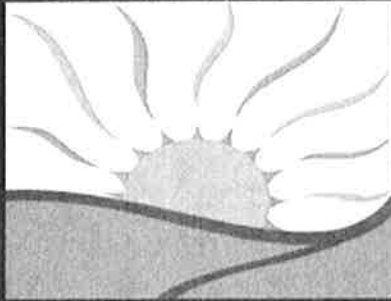
Water is precious and money is hard-earned — let's do all we can to save all we can.

What have you done to conserve? If you have cut your water use, we want to hear from you. Additionally, if you have converted your landscape to native, drought-tolerant plants, we want to hear from you. You may be featured in upcoming district communications.

Contact the District at info@ncsd.ca.gov.

Jessica Matson

From: Nipomo Chamber of Commerce <info@nipomochamber.org>
Sent: Monday, March 30, 2015 12:34 PM
To: Jessica Matson
Subject: Monday News, March 30, 2015



Nipomo
CHAMBER OF
COMMERCE



Richard Malvarose
Chamber President
Nipomo Properties

Monday News

March 30, 2015

Nipomo Chamber of Commerce

***April 9th Mixer
Healing Touch Day Spa***

***5:00-7:00pm
180 Mary Ave.
Nipomo***

Our monthly Business Mixers provide two hours of power networking for Chamber members. Building relationships and making business connections at these networking events are key strategies for small business success. Come enjoy food, beverages and door prizes.

Chamber Hours

Monday through Friday
9 am to 5 pm

239 W. Tefft St.
Nipomo, CA 93444

Office: 805.929.1583

Fax: 805.929.5835

info@nipomochamber.org

For Info Contact:

Amber Wilson
Executive Director

amber@nipomochamber.org

Platinum Sponsor

Rabobank

Nipomo

**President's Circle
Sponsors**

**Community Health
Centers**

Nipomo Recreation

*Nipomo Chamber of Commerce
11:30am
239 W. Tefft St.
Nipomo*

OTNA's Non Profit Group of Nipomo residents, business owners and ranchers are dedicated to maintaining and improving the area known as Olde Towne Nipomo



NIPOMO
Community Services District

We are now on   /NipomoCSD

Saving water also saves money!

Using mulch on soil surfaces can save 20-30
gallons per 1,000 sq. ft. each time!

REDUCE YOUR USE

For more information on how to reduce water use, visit
www.ncsd.ca.gov.

Now Accepting Auction

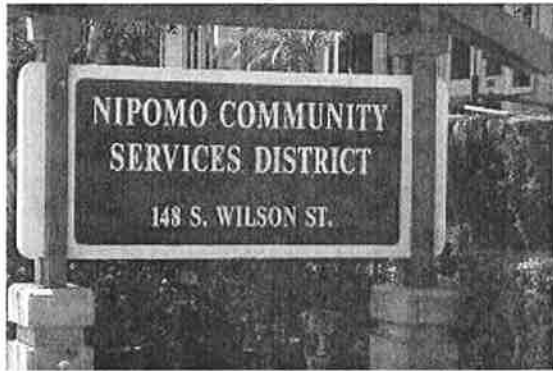


Water Pipeline to Nipomo Nears Completion

Supplemental water from Santa Maria to begin this summer

Keith Carls, KEYT - KCOY - KKFX Reporter, KeithCarls@kcoy.com

POSTED: 02:22 AM PDT Mar 26, 2015



NIPOMO, Calif. -

Drought-weary Nipomo will soon be getting some relief via a water pipeline from Santa Maria that is nearing completion.

The first delivery of supplemental water to the Nipomo Mesa area is expected to begin this summer.

"The importance is getting more and more obvious as time goes on", says Nipomo Community Services District board member Ed Eby, "when we see areas like Cambria, which is out of water essentially, and rationing their water severely, we still have a supply of groundwater that's diminishing rapidly."

Eby says the first shipment of water in the \$14 million dollar pipeline from Santa Maria will deliver more than 600 acre-feet of water but could ultimately increase to up to three thousand acre-feet annually.

"With this drought and the rapidly dropping water table, we obviously need another source of water in case that source of water goes out of reach", Eby says, "we saw the problems that we had back in the early 2000's, we saw depressions in our water table, specifically out by Black Lake and Trilogy, where the water level was going below sea level, and you can only do that for a certain amount of time before you have sea water intrusion, fortunately we don't yet have sea water intrusion, but that's the thing we want to avoid."

The City of Santa Maria says the sale of water to Nipomo was decided in a landmark legal settlement involving the management of the massive Santa Maria Valley groundwater basin.

"I'd like to point out that the water line project isn't necessarily a deal for the City or Nipomo", says Santa Maria Utilities Director Shad Springer, "it's a requirement of the groundwater litigation which was settled several years ago, where the city would provide water to the Nipomo Mesa."

Springer says Santa Maria can provide the water to Nipomo without jeopardizing its own supply.

"There definitely are concerns that we are having with respect to water conservation and encouraging citizens to save water", Springer says, "the city's water supply is in good shape, we anticipate a 20 percent allocation from the State Water Project this year, which will provide about 30 percent of the city's annual water demand that will be supplemented by the very large Santa Maria groundwater basin which groundwater pumping will make up the rest of the demand."

"The groundwater basin in the Santa Maria Valley has an adequate supply for the needs for the City of Santa Maria and also to provide sales to Nipomo", Springer says, "each year we do a groundwater management study and the report from the last year indicated the groundwater basin was still within historic norms."

Springer says Nipomo is paying the same rate for the water as City of Santa Maria customers.

"Nipomo is paying the rates based on what the city customers pay so the City of Santa Maria is not intending to subsidize the rates for Nipomo", Springer says, "the intent of the revenues for the Nipomo water sales is to offset the expenses for providing water to Nipomo, as I mentioned, it was part of the settlement for the agreement and it wasn't a business deal for the City of Santa Maria to pursue."

"They are not really giving it to us, we're paying a pretty penny for it", Ed Eby says, "its over a thousand dollars per acre foot."

Eby says the supplemental water is only part of the solution to water needs on the Nipomo Mesa.

"In the short term we're augmenting our supply with supplemental water from Santa Maria", Eby says, "over the long term, somebody is going to have to finally bite the bullet and realize that, especially if we have the droughts like we're having, we're going to have to bite the bullet and have a desalinization plant on the coast."

Copyright © 2015 NPG of California, LLC. All rights reserved. This material may not be published, broadcast, rewritten or redistributed.



.com

SLO County supervisors to review proposed Blacklake expansion

MARCH 23, 2015 12:00 AM • STAFF REPORT

The owner of a golf resort community on the Nipomo Mesa wants to construct additional homes and a hotel with a restaurant at the planned development.

Rob Rossi is hoping to amend the Blacklake specific plan to allow the addition of up to 120 hotel suites, between 90 and 100 single-family residences and 60 to 80 senior housing duplexes at Blacklake Golf Course.

If approved, Rossi would also relocate the existing clubhouse to a new location along Willow Road that would include both visitor- and member-serving amenities, as well as reduce the open space area used for the golf course from 58 acres to approximately 35 acres.

The impact on water supplies would be offset by modifying the 27-hole golf course to remove the 50-plus acres of grass, according to a staff report on the proposed amendment. Rossi's request will be heard by the Board of Supervisors on Tuesday.

Rossi also has proposed purchasing supplemental water from the Nipomo Community Services District.

The Blacklake specific plan was adopted in February 1983, and the current plan allows up to 559 residential units on 220 acres of the 515-acre site, three nine-hole golf courses on 190 acres of the site and secondary recreational uses.

In May 1998, the specific plan was amended to develop up to a maximum of 5,000 square feet of food and beverage retail sales, allow for construction of a neighborhood market and increase residential development from 515 units to the current 559.

If the supervisors approve the amendment for processing, the environmental review process would be undertaken, with the location and exact number of units determined prior to the completion of the project description.

Public hearings would then be held before the county Planning Commission and at the Board of Supervisors for final approval, according to the report.

The supervisors meet at the County Government Center, 1055 Monterey St., San Luis Obispo. The Blacklake hearing is scheduled for the afternoon session, which starts at 1:30 p.m.

St. Joseph's Festival offers music, food, more

MARCH 17, 2015 6:13 PM • STAFF REPORT

Three bands will perform, food will be on sale and dozens of community organizations and government agencies will operate information booths today at the annual St. Joseph's Festival.

The family-fun event will take place from 9 a.m. until 5 p.m. at St. Joseph's Roman Catholic Church, 298 S. Thompson Ave., Nipomo. Admission is free.

Attendees can feast on tacos, enchiladas, quesadillas, nachos, pizza, hot dogs and other snacks as they listen to music by three bands — Unfinished Business, Triple Down Theory and Banda Perla Gitana.

The event also will include a drawing for a 2003 Honda Element as a fundraiser for the church. Tickets will be available at the festival for a \$10 donation.

The Vandenberg Air Force Base honor guard is scheduled to present the colors at noon.

Information and service booths will be set up by Dignity Health, Catholic Charities, VFW, Veterans Programs of San Luis Obispo County and the American Red Cross, a church spokeswoman said.

Also scheduled to participate are the San Luis Obispo County Sheriff's Department Crime Prevention Unit and Search & Rescue, the California Highway Patrol, Cal Fire/San Luis Obispo County Fire Department and San Luis Ambulance.

Others planning to participate include the Boy Scouts of America, San Luis Obispo County Public Health Department, New Life K9s for Veterans, Mission Hope Cancer Center and San Luis Obispo Community Counseling Services, the spokeswoman said.

Booths also will be set up by the Nipomo Chamber of Commerce, Nipomo Community Services District, the Nipomo Lions Club, the Central Coast Children's Resource Network, Goodwill Resources, RISE, St. Joseph High School and Habitat for Humanity.

Other participants will include Transitions — Mental Health Association, the Santa Maria Fire Department Listos Program, Immaculate Heart Radio/EWTN, Respect for Life, Headstart and Community Health Centers of the Central Coast.

Also planning to participate are Court Appointed Special Advocates, the Center for Family Strengthening of San Luis Obispo County and Helping Soldiers With Care Packages in the Desert.

For more information, call the church office at 929-1922.

Capitol Alert

SUBSCRIBE



Capitol Alert

THE SACRAMENTO BEE
Stay Connected » sacbee.com

[Twitter](#) [Facebook](#) [Reddit](#) [Email](#) [Share](#)

Jerry Brown orders mandatory water reductions amid California drought

BY DAVID SIDERS - DSIDERS@SACBEE.COM

04/01/2015 11:46 AM | Updated: 04/01/2015 1:33 PM



Frank Gehrke of the California Department of Water Resources and California Gov. Jerry Brown walk out into a snowless meadow during the snowpack survey in Phillips on Wednesday, April 1, 2015. For the first time since measurements began in 1942, there was no snow to measure on this date. Last year's measurement was 33", the average is 63". The previous low for this date was 27" in 1977. RANDALL BENTON / RBENTON@SACBEE.COM

PHILLIPS — With California slogging into its fourth year of withering drought, Gov. Jerry Brown on Wednesday ordered mandatory water reductions of 25 percent in cities and towns across the state.

The administration said it was the first time a governor has ever ordered the State Water Resources Control Board to implement mandatory water reductions, with implications for everyone from farmers to city-dwellers and their lawns.

The order came as Brown and state water officials traveled east of Sacramento to measure snowpack in the Sierra Nevada. Brown stood in a dry meadow on the day of year the snowpack typically peaks.



“We’re standing on dry grass, and we should be standing in five feet of snow,” Brown said. “We’re in an historic drought, and that demands unprecedented action.”

Brown said local water agencies could issue cease and desist orders and fine water users if they fail to meet the conservation order. He said the state plans to provide incentives to homeowners to take measures such as replacing lawns with artificial turf or other drought-tolerant landscaping.

“I would hope that we don’t see this in some punitive way, but that we see the challenge,” Brown said. “(The) reality is that the climate is getting warmer, the weather is getting more extreme and unpredictable, and we have to become more resilient, more efficient and more innovative. And that’s exactly what we’re going to do.”

The snowpack, which typically accounts for about 30 percent of California’s water supply, has been declining since the first manual survey of the season, in December. According to the most recent electronic readings, it now stands at its lowest level in recorded history, just 8 percent of average.

The Department of Water Resources has no record of a governor ever attending the annual snow survey, but Brown has come under increasing pressure to act on the drought as water grows more scarce. His call for a voluntary water reduction of 20 percent statewide last year resulted in increased conservation, but ultimately fell short.

“I called for 20 percent voluntary, and we’re going to get more like 9 percent,” Brown said. “That’s not enough.”

The 25 percent reduction order will be measured against water use in 2013, before the drought began, said Mark Cowin, director of the Department of Water Resources. Officials said local agencies that have conserved a relatively large amount of water already will receive less stringent targets than those that have conserved less.

Cowin said the state hopes for cooperation but that, “In the end, if individuals and agencies don’t perform, there will be repercussions, including potential fines.”

Brown said the state will require water management plans on large farms, with increased reporting on water use.

“People should realize we’re in a new era,” he said. “The idea of your nice little green grass getting lots of water every day, that’s going to be a thing of the past.”

Last week, Brown signed a \$1.1 billion drought relief and flood protection package, then went on NBC’s “Meet the Press” to address the crisis for a national audience. Brown has stopped short of attributing the drought to climate change but said it is the kind of event that climate change is making “absolutely inevitable in the coming years and decades.”

Two of the first three months of the year, January and March, were the driest in more than 100 years.

The drought has sapped California aquifers and forced farmers to fallow fields. Low water flows and high temperatures threaten to kill endangered steelhead in the American River, and the production of inexpensive hydroelectricity has dwindled.

State regulators ordered water agencies last month to limit the number of days each week customers can water their lawns.

A few miles down Highway 50 from the meadow where the snowpack measurement took place, the only evidence of winter was a patch of snow that could be seen on a hilltop from the window of Strawberry Station, a general store.



“It’s pretty dire,” said David Schlosser, who owns the store with his wife, Jenifer. “It looks like August.”

Schlosser said families heading to the hills during winter vacations this year stopped and asked how far they had to continue to find snow.

“We would say, ‘Denver,’” he said.

Jenifer Schlosser said that during a major drought in the late 1970s, when Brown was governor before, residents trusted dry years were cyclical and would come to an end.

“Now, with all the other changes – climate change – people are like, ‘Oh, this could be serious.’”

At the snowpack measurement, Brown was asked about his own conservation efforts.

“First of all, my own water use is relatively limited, I must say,” Brown said. “We’re very careful of what we’re doing – turning off that faucet a little quicker, getting out of the shower a little faster, and not flushing the toilet every time.”

Call David Siders, Bee Capitol Bureau, (916) 321-1215. Follow him on Twitter @davidsiders (<https://twitter.com/davidsiders>).

Comments (2) (#tabs-b0710947-1-tabPane-2)

Twitter

Facebook

Reddit

Email

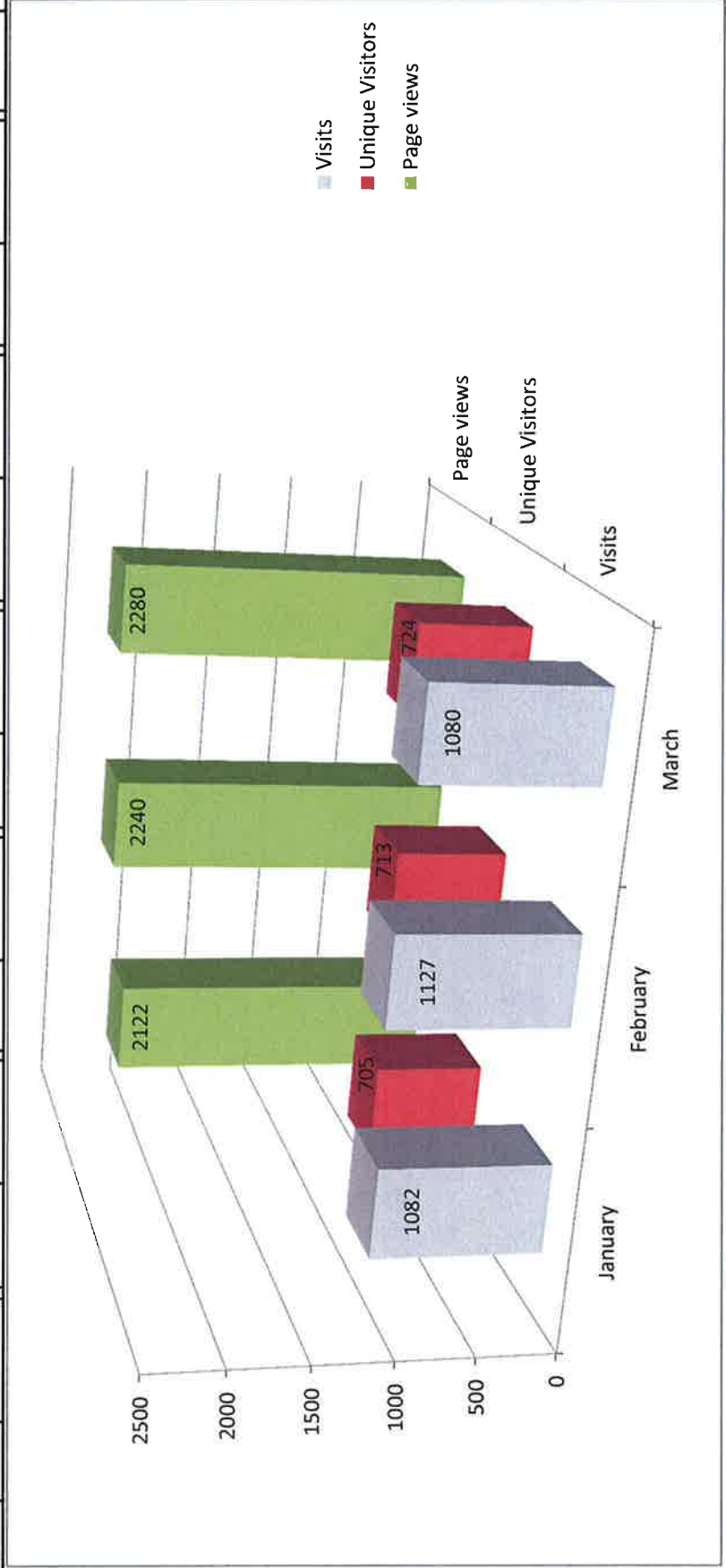
Share

2015 Website Traffic Summary

Week	Visits	Unique Visitors	Pageviews	Pages/Visit	Avg. Visit Duration	Bounce Rate	% New Visits	Highest Traffic Day	Significant Actions During the Week Possibly Contributing to Traffic
12/29/14 - 1/4/15	163	116	324	1.99	0:01:37	58.28%	52.15%	Wed 12/31	Low due to holiday
1/5/15 - 1/11/15	303	211	604	1.99	0:01:31	56.77%	50.17%	Mon 1/5	
1/12/15 - 1/18/15	234	165	458	1.96	0:01:32	51.28%	50.85%	Tue 1/13	
1/19/15 - 1/25/15	249	190	450	1.81	0:01:40	58.23%	53.82%	Fri 1/23	
1/26/15 - 2/1/15	253	190	518	2.05	0:01:42	51.78%	56.92%	Wed 1/28	
2/2/15 - 2/8/15	296	213	599	2.02	0:01:36	59.46%	46.96%	Mon 2/2	
2/9/15 - 2/15/15	255	184	493	1.93	0:01:12	54.51%	52.55%	Mon 2/9	
2/16/15 - 2/22/15	316	225	595	1.88	0:01:34	57.28%	49.05%	Tue 2/17	
2/23/15 - 3/1/15	251	182	525	2.09	0:01:53	48.61%	49.80%	Tue 2/24	
3/2/15 - 3/8/15	250	180	469	1.88	0:01:08	53.60%	46.40%	Tue 3/3	
3/9/15 - 3/15/15	245	184	496	2.02	0:01:11	51.02%	53.47%	Mon 3/9	
3/16/15 - 3/22/15	236	185	455	1.93	0:01:39	60.59%	58.90%	Mon 3/16	
3/23/15 - 3/29/15	250	190	666	2.66	0:02:31	53.20%	58.40%	Mon 3/23	

Website Traffic Summary

2014	Visits	Chg from Prev Mo	Unique Visitors	Chg from Prev Mo	Page views	Chg from Prev Mo	Pages/ Visit	Chg from Prev Mo	Avg. Visit Duration	Chg from Prev Mo	Bounce Rate	Chg from Prev Mo	% New Visits	Chg from Prev Mo
January	1082		705		2122		1.96		0:01:35		54.34%		52.77%	
February	1127	4.16%	713	1.13%	2240	5.56%	1.99	1.53%	0:01:35	0.00%	55.37%	1.90%	49.42%	-6.35%
March	1080	-4.17%	724	1.54%	2280	1.79%	2.11	6.03%	0:01:37	2.11%	54.35%	-1.84%	54.63%	10.54%
April														
May														
June														
July														
August														
September														
October														
November														
December														



2015 Social Media Summary

FACEBOOK

Week	New Users	Comment Likes	Comment Shares	User Posts	*Content Views	Most Popular Post
2014	19					
12/5/14 - 1/8/15	4	2	0	0	NA	
1/9/15 - 2/5/15	2	4	0	0	NA	
2/6/15 - 2/19/15	2	2	0	0	NA	
2/20/15 - 3/5/15	3	4	0	0	NA	
3/6/15 - 4/2/15	2	6	0	0	NA	Funny video, serious issue. What are your water priorities? #CADrought #savewater #everydropcounts (157 views)

*data will be available after 30 users

TWITTER

Week	New Followers	Re-tweets (shared)	Mentions/Favorites (comments)	Link Visits (visits to links)	Content Views (Impressions)	Most Popular Post
2014	30					
12/5/14 - 1/8/15 (28 day period)	7	4	0	8	1,100	Options for disposing of your tree... http://fb.me/1o4KKY5dO (97 views) We hope you are yours had a great Christmas! As a reminder, the office is closed today and will reopen Monday at 8 AM. (84 views)
1/9/15 - 2/5/15 (28 day period)	5	5	6	6	980	Your Monday tip has to do with MULCH! #savewatersavemoney #everydropcounts (68 views) _____ A lot of works goes into making sure your water is safe. Here's a fun video of people drinking sewage water for... http://fb.me/7m0RQQiUd (148 views)

2015 Social Media Summary

Week	New Users	Comment Likes	Comment Shares	User Posts	*Content Views	Most Popular Post
2/6/15 - 2/19/15 (14 day period)	3	0	0	5	699	We'll take the rain but the storms did not provide us enough to ease drought symptoms. In January, District... http://fb.me/3ADhXucdM (35 views)
2/20/15 - 3/5/15 (14 day period)	3	0	0	4	555	Ever wondered who your District's staff are? The friendly faces of NCSD (picture of staff) (31 views)
3/6/15 - 3/19/15 (14 day period)	2	1	0	6	577	Fix A Leak Week: Videos on how to check your home for leaks! #FixaLeak #everydropcounts #savewatersavemoney http://fb.me/6uttTDQnC (82 views)
3/20/15 - 4/2/15 (14 day period)	2	1	3	4	708	Defensible space tips from CAL FIRE. #calfire #springcleaning http://fb.me/3gZitywPR (99 views)

April 8, 2015

F

ATTACHMENT G

**Example Comparison of Residential Water Charges
For 10 HCF and 20 HCF Monthly Water Usage (January 2015)**

(For Single Family Residential Rates; for a 5/8 x 3/4 in. meter; on a 1/4 acre parcel)

Agency	10HCF \$\$	20HCF \$\$	Calculation for 10HCF (# hcf x \$rate) + fees & charges	Calculation for 20HCF (# hcf x \$rate) + fees & charges
Buellton	41.90	61.60	$(10 \times 1.97) + 22.20$	$(20 \times 1.97) + 22.20$
Carpinteria Valley WD*	101.98*	155.47*	$(9 \times 3.12) + (1 \times 4.05) + 33.01 + (12 \times 2.85) + 1.64 + (10 \times 0.10)$	$(9 \times 3.12) + (2.25 \times 4.05) + (8.75 \times 5.42) + 33.01 + (12 \times 2.85) + 1.64 + (20 \times 0.10)$
Casmalia	155.50	255.50	$(90.00 \text{ for } 3.45\text{hcf}) + (655 \text{ cu ft } \times 0.10)$	$(90.00 \text{ for } 3.45\text{hcf}) + (1655 \text{ cu ft } \times 0.10)$
Cuyama	74.45	78.85	$(3 \times 0.29) + (7 \times 0.44) + 70.50$	$(3 \times 0.29) + (17 \times 0.44) + 70.50$
Golden State Water	41.82	67.86	$((10 \times (2.053 + .359)) + 17.08) \times 1.015$	$((15 \times (2.053 + .359)) + (5 \times (2.361 + .359))) + 17.08) \times 1.015$
Goleta WD	91.94	144.64	$(10 \times 5.27) + 39.24$	$(20 \times 5.27) + 39.24$
Guadalupe	36.52	73.02	$21.92 + (4 \times 3.65)$	$21.92 + (14 \times 3.65)$
La Cumbre Mutual WC*	62.35	106.03	$(10 \times 4.37) + 15.00 + (0.5 \times 29 \times 0.25 \text{ acre})$	$(20 \times 4.37) + 15.00 + (0.5 \times 29 \times 0.25 \text{ acre})$
Lompoc	67.47	110.47	$(10 \times 4.02) + 27.27$	$(10 \times 4.02) + (10 \times 4.30) + 27.27$
Los Alamos	45.54	75.04	$(9 \times 2.11) + (1 \times 2.95) + 23.60$	$(9 \times 2.11) + (11 \times 2.95) + 23.60$
Mission Hills	42.56	65.06	$(10 \times 1.61) + 26.46$	$(10 \times 1.61) + (10 \times 2.25) + 26.46$
Montecito	85.46	132.26	$(10 \times 4.68) + 38.66$	$(20 \times 4.68) + 38.66$
Santa Barbara	65.68	157.78	$(4 \times 3.28) + (6 \times 6.39) + 14.22$	$(4 \times 3.28) + (12 \times 6.39) + (4 \times 13.44) + 14.22$
Santa Maria	65.76	114.24	$(5 \times 3.270) + (5 \times 3.879) + 30.01$	$(5 \times 3.270) + (5 \times 3.879) + (5 \times 4.534) + (5 \times 5.162) + 30.01$
Santa Ynez ID#1	69.68	104.18	$(10 \times 3.45) + 35.18$	$(20 \times 3.45) + 35.18$
Solvang	104.31	146.97	$(10 \times 3.16) + 72.71$	$(13 \times 3.16) + (7 \times 4.74) + 72.71$
Vandenberg Village	36.88	52.48	$(10 \times 1.31) + 23.78$	$(10 \times 1.31) + (7 \times 1.50) + (3 \times 1.70) + 23.78$

***Footnotes**

Some bills may include additional taxes or one-time charges.

Carpinteria charges are customized to each account. The two Carpinteria example calculations in this table use a monthly mean of 12 hcf and a winter mean water use of 9 hcf for SFR customers for the last 5 years. See footnotes on previous pages.

La Cumbre's calculation assumes the property is 1/4 acre to compare with typical residential property in other areas.

One hundred cubic feet (HCF) = 748 gallons; 10 HCF = 7,480 gals.

NIPOMO
CSD | 42.40 | 68.24

TO: BOARD OF DIRECTORS

FROM: MICHAEL S. LEBRUN *MSL*
GENERAL MANAGER

DATE: APRIL 3, 2015

AGENDA ITEM

G

APRIL 8, 2015

COMMITTEE REPORTS

ITEM

Review and discuss Committee meeting minutes.

BACKGROUND

The following committee meetings were held for which meeting minutes are being provided:

- March 16, 2015 Finance and Audit Committee Meeting

RECOMMENDATION

It is recommended that your Honorable Board discuss the meeting minutes as appropriate.

ATTACHMENTS

- A. Finance and Audit Committee Meeting Minutes

April 8, 2015

G

ATTACHMENT A

NIPOMO COMMUNITY SERVICES DISTRICT

MONDAY, MARCH 16, 2015

2:00 P.M.

SPECIAL MEETING MINUTES

FINANCE AND AUDIT COMMITTEE

1. CALL TO ORDER, FLAG SALUTE AND ROLL CALL

Chairman Gaddis called the meeting to order at 2:00 p.m. Chairman Gaddis and Director Armstrong were in attendance along with Staff members Michael LeBrun and Lisa Bognuda. No public was in attendance.

2. REVIEW INFORMATION FOR INCLUSION IN THE DRAFT 2015-2016 FISCAL YEAR BUDGET

Michael LeBrun and Lisa Bognuda, gave an overview of the item and answered questions from the Committee.

The Committee directed Staff to proceed with preparing the draft FY 2015-2016 budget.

3. REVIEW EMPLOYEE COST OF LIVING ADJUSTMENT (COLA)

Michael LeBrun, General Manager, gave an overview of the item and answered questions from the Committee.

The Committee directed Staff to include the COLA in the 2015-2016 budget development.

4. REVIEW PURCHASING POLICY

Michael LeBrun and Lisa Bognuda gave an overview of the item and answered questions from the Committee

The Committee directed Staff to continue to work on suggested changes to the policy.

5. REVIEW REQUEST FOR PROPOSALS FOR FUND ACCOUNTING AND UTILITY BILLING SOFTWARE

Michael LeBrun and Lisa Bognuda, gave an overview of the item and answered questions from the Committee.

The Committee directed Staff to proceed with initiating contract negotiations with Tyler Technologies.

6. SET NEXT MEETING DATE

The Committee set the next meeting for Friday, April 17, 2015 at 2:00 p.m.

7. ADJOURN

The meeting was adjourned at 3:20 p.m.