

Nipomo Community Services District



Supplemental Water Project Bid Package 4

Monthly Progress Report



Prepared By:
MNS Engineers, Inc.

December 2014

Schedule and Budget Summary

Schedule Summary

Notice to Proceed	December 19, 2013
Original Contract Days	519
Contract Days Added	14
Revised Contract Days	533
Elapsed Time (Days)	(401)
Remaining Time (Days)	132
Contract Completion Date	June 5, 2015
Time Elapsed to Date	75%
Work Completed to Date	49%
Approved Change Orders (Days)	14 days

Budget Summary

Original Contract Amount	\$4,364,030.00
Approved Change Orders (Cost)	\$606,406.38
Revised Contract Amount	\$4,951,116.38
Previous Payments	\$2,251,311.96
Current Month Pay Request	\$185,282.55
Total Work Completed	\$2,436,594.51
Work Remaining	\$2,514,521.87

Progress Summary

Joshua Pump Station Site

Summary of Work:

Spieß continued work on the bypass piping in Santa Maria Vista Way, installing two thrust collars on the 12-inch PVC piping and installing part of the 24-inch DIP, including the butterfly valve. They also installed the pressure reducing valve (PRV) vault and piping in Santa Maria Vista Way. They continued work at the pump station site, completing the stem walls, under slab conduit, and some of the reinforcing for the pump station slab. Spieß formed and poured the concrete spillway and installed the catch basin and the 15-inch CMP.

Pictures:



Thrust collar formed for 12-inch PVC water line in Santa Maria Vista Way.



Spieß pouring one of the thrust collars on the 12-inch water line in Santa Maria Vista Way.



Spieß assembling 24-inch DIP bypass piping.



Spieß installing 24-inch valve at the bypass in Santa Maria Vista Way.



Spieß pouring thrust block at butterfly valve on the 24-inch bypass.



Spieess stripping forms from stem wall pour at the pump station.



Forms being stripped from the stem wall pour at the pump station.



Forms stripped from stem wall at the pump station.



Spieß patching form tie holes in stem wall at pump station.



Spiess backfilling under slab subgrade at pump station.



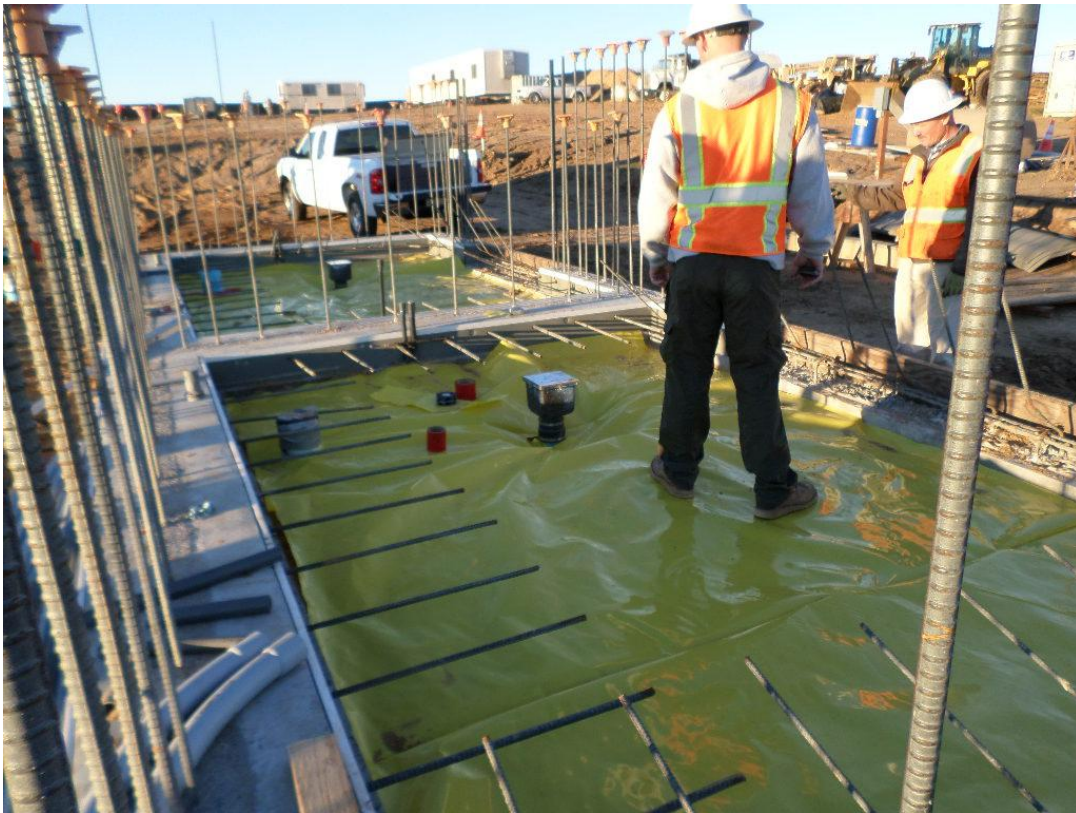
Spiess compacting subgrade fill at pump station.



Furgro testing compaction for subgrade under pump station slab.



St. Dennis Electric installing underslab conduit.



Base and vapor barrier installed for slabs at ammonium sulfate and hypochlorite rooms.



Spiess spreading sand over vapor barrier for slab at ammonium sulfate room.



St. Dennis Electric continuing under slab conduit installation at pump station.



Rebar installed for slab at ammonium sulfate room in pump station.



Vista Steel tying reinforcing at pump station.



Spieß excavating for the PRV vault in Santa Maria Vista Way.



Spiess compacting subgrade for the PRV vault in Santa Maria Vista Way.



Spiess installing drain rock and fabric for underneath the PRV vault.



Spiess setting the PRV vault base.



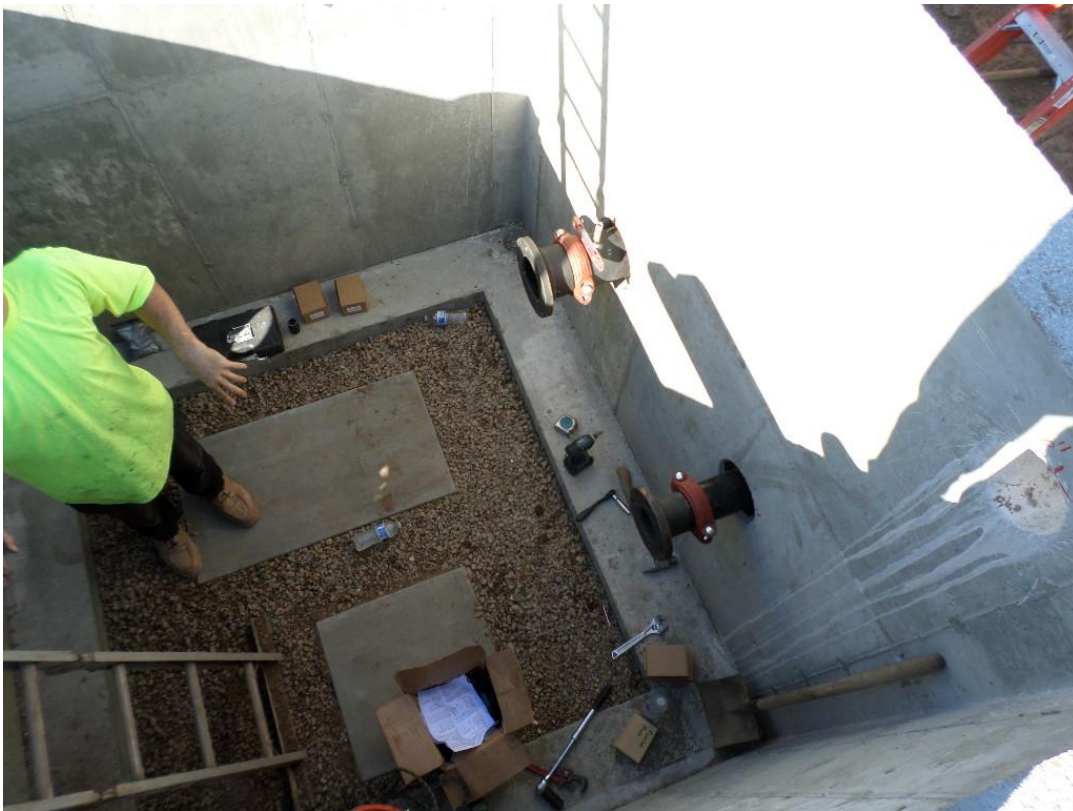
Spiess setting the PRV vault in Santa Maria Vista Way.



Subcontractor, Russ Concrete Cutting, coring PRV vault walls for pipe penetrations.



Spieß pouring pipe support pads inside PRV vault.



Spiess installing pipes inside PRV vault.



Spiess installing pipes inside the PRV vault.



Piping installed inside PRV vault.



PRV vault lid installed.



Catch basin installed.



Spieß installing 15-inch CMP for site drainage.



Spieß starting excavation for concrete spillway at retention basin.



Excavation completed for the concrete spillway and Spieß starting on form construction.



Forming the concrete spillway.



Spies forming the concrete spillway.



Spieß pouring the concrete spillway.



Spieß finishing the concrete spillway.

Blosser Road Flow Metering Station Vaults

Summary of Work:

Spiess removed two 45 degree elbows on the 24-inch DIP running out of the vaults were determined to be defective and had to be replaced.

Pictures:



Spiess reinstalling 45 degree elbows to replace defective elbows.

Sundale Well Site

Summary of Work:

Spiess constructed falsework and scaffolding for pouring the concrete roof.

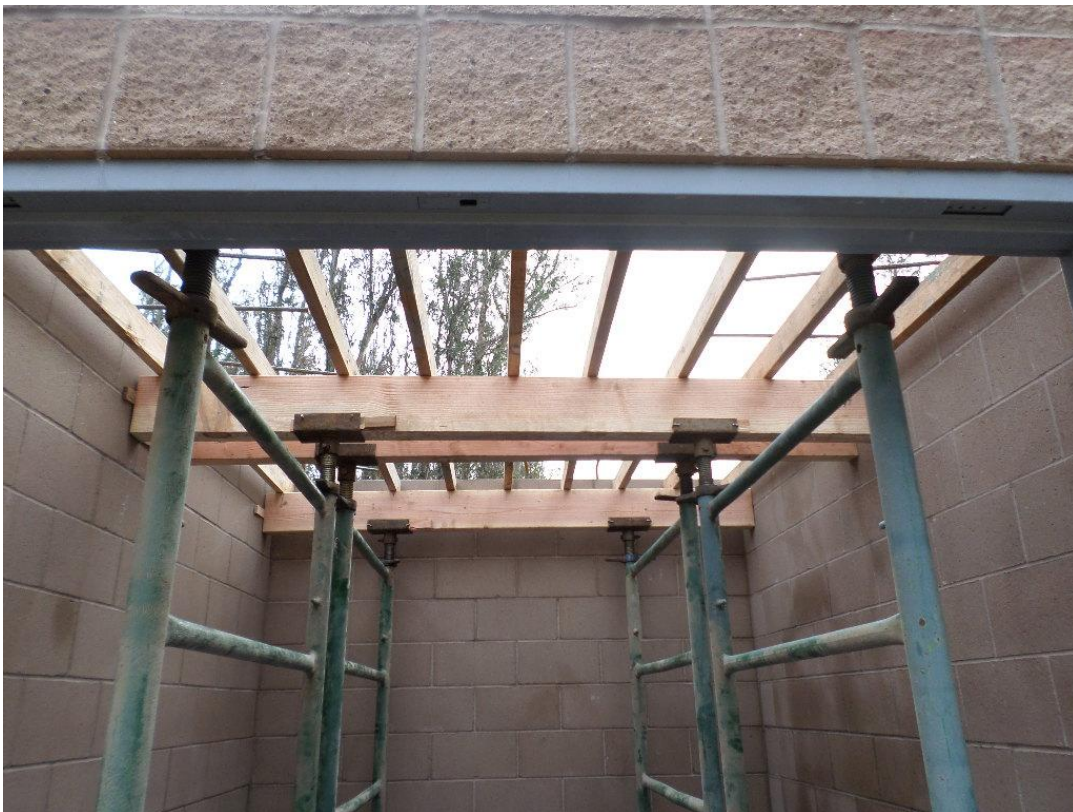
Pictures:



Sundale Well Site with the masonry complete.



Spiess installing falsework for roof construction.



Falsework being installed for roof construction.



Exterior falsework installed.



Spiess installing scaffolding.

Via Concha Well Site

Summary of Work:

Spiess constructed falsework and scaffolding for the concrete roof.

Pictures:



Exterior forms and scaffolding installed.



Spies forming falsework for concrete pour of the roof.



Forming for roof pour.

Blacklake Well Site

Summary of Work:

Spiess constructed falsework and scaffolding for pouring the concrete roof.

Pictures:



Spiess installing exterior forms and scaffolding for the roof pour.



Spieß installing roof forms.



Spieß installing roof forms.

Eureka Well Site

Summary of Work:

Spieß began construction of the falsework and scaffolding for pouring the concrete roof.

Pictures:



Exterior falsework, forms and scaffolding installed for roof pour.