

# Nipomo Community Services District



## Supplemental Water Project Bid Package 4

### Monthly Progress Report



Prepared By:  
MNS Engineers, Inc.

**May 2015**

# Schedule and Budget Summary

## Schedule Summary

Notice to Proceed	December 19, 2013
Original Contract Days	519
Contract Days Added	34
Revised Contract Days	553
Elapsed Time (Days)	(521)
Remaining Time (Days)	31
Contract Completion Date	June 27, 2015
Time Elapsed to Date	94%
Work Completed to Date	84%
Approved Change Orders (Days)	34 days

## Budget Summary

Original Contract Amount	\$4,364,030.00
Approved Change Orders (Cost)	\$841,564.92
Revised Contract Amount	\$5,205,594.92
Previous Payments	\$4,335,559.03
Current Month Pay Request	\$302,812.39
Total Work Completed	\$4,638,371.42
Work Remaining	\$567,223.50

# **Progress Summary**

## **Joshua Pump Station Site**

### **Summary of Work:**

The HVAC system was installed and ducting completed by DAHL Air Conditioning. Coast Painting finished coating doors, bollards and the supports for the surge tank, which Spiess anchored to the pad. Martin Doors installed hardware on the doors and installed the roll up door for the pump room. Spiess completed site grading, set pump motors, installed chemical tank piping, constructed V-ditches and sidewalk, poured valve can collars, completed work at the retention basin and set the emergency generator. St. Denis Electric installed the site lighting posts, installed the MCC unit in the electrical room, lighting in the pump station building, and exposed conduit. PG&E dropped power for an electrical service to the site by setting a new pole, installing the transformer and running wires for the service. Site work at the PRV was completed.

### **Pictures:**



DAHL Air Conditioning installing HVAC ducting inside pump room.



DAHL Air Conditioning installing the HVAC ducts in the pump room.



HVAC ducts installed in pump room.



HVAC ducts installed in electrical room.



Spies removing rough face from block to allow flush HVAC installation.



DAHL Air Conditioning installing exterior HVAC ducts to units.



Exterior HVAC ducts installed.



Coast Painting coating the doors.



Martin Doors installing hardware on doors.



Bollards coated at PG&E electrical control panel.



Spies removing native material to prepare site for aggregate base installation for driveway.





Spiess continuing to remove native material around site in preparation for installation of aggregate Base driveway.



Spiess spreading aggregate base around the building.



Spiess compacting aggregate base for driveway around building.



Spiess starting excavation for V-ditch.



Spies forming three foot V-ditch.



Three foot V-ditch formed.



Reinforcing installed at three foot V-ditch.



Spies forming six foot V-ditch.



Reinforcing installed in six foot V-ditch.



Spieß pouring six foot V-ditch.



Spies forming sidewalk to electrical room.



Spies pouring side walk to electrical room.



Sidewalk pour completed.



Spies grading around valve cans.



Forms for pouring valve can collars.



Spies pouring bollards and valve can collars.





Spieess placing aggregate base around valve cans and V-ditch for finish grade.



Compacting aggregate base.



Retention basin with fabric and drain rock installed at storm drain inlets.



Spiess installing fabric lined rock drain in retention basin.



Fabric lined rock drain in retention basin completed.



Bender board installed around perimeter of retention basin.



Grading bank between facilities and future fence.



Surge tank anchored.



Coast Painting coating supports for surge tank.



Installing the roll-up door for the pump room.



Roll-up door installed for the pump room.



St. Denis Electric installing exterior lights around pump station building.



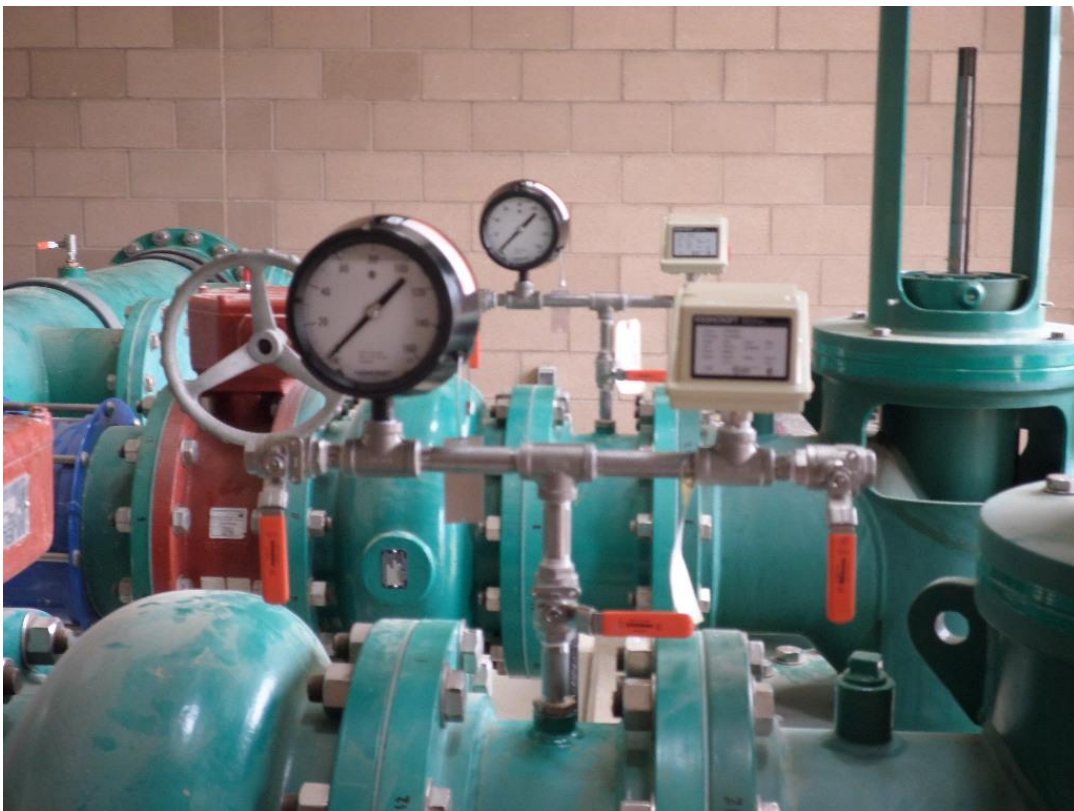
St. Denis Electric installing lighting in pump station.



Spiess installing pipe supports in the pump room.



Spiess installing pipe supports in the pump room.



Spiess installing gauge assembly in pump room.





Spiess installing pump motors through access hatches in roof.



Spiess installing pump motors.



Spieß patching surface defects in concrete pump pads.



Spieß installing rack and conduit at pumps.



Spiess installing chemical tank piping.



St. Denis Electrical auguring for light pole base.



Light pole base formed and reinforcing and conduit installed.



Pouring the light pole base.



PG&E installing power pole for electrical service to the pump station.



PG&E connecting the main electrical feed at the pole.



PG&E on site to set the new transformer.



PG&E terminating wires in the electrical service panel.



Electrical service terminated by PG&E at transformer.



St. Denis Electric setting MCC in electrical room.



Installing exposed conduit in electrical room.



Spiess setting emergency generator onto pad.





Installing grounding rod for emergency generator.



Spies forming steps to access emergency generator.



Spieß pouring emergency generator access steps.



St. Denis Electric drilling for the SCADA antenna base at the PRV vault.



Spieß grading around PRV vault.



Spieß raising valve cans around PRV vault.



Rock placed around PRV vault site.

# **Blosser Road Flow Metering Station Vaults**

## **Summary of Work:**

Spieess completed site grading and Central Coast Fence installed perimeter fencing.

## **Pictures:**



Driveway with forms removed and site graded.



Central Coast Fence installing perimeter fencing.



Vehicle access gate installed.

## **Sundale Well Site**

### **Summary of Work:**

Chemical feed pumps were installed and tested, chlorine analyzers were installed, conduit was completed, wiring pulled and door hardware installed.

### **Pictures:**



Ammonium sulfate chemical skid installed (eye wash station assembled).



Chlorine analyzers installed.





St. Denis Electric pulling wire.



St. Denis Electric pulling wire.



Spiess installing pressure reducer.



PLC panel and wiring.

## **Via Concha Well Site**

### **Summary of Work:**

Chemical feed pumps were installed, conduit was installed, and door hardware was installed.

### **Pictures:**



Martin Doors installing hardware on doors.



Chemical analyzer piping installed.

# **Blacklake Well Site**

## **Summary of Work:**

Chemical feed pumps were installed and tested, chlorine analyzers were installed, conduit was completed, wiring pulled and door hardware installed. Perimeter fencing was also installed.

## **Pictures:**



St. Denis Electric installing conduit.



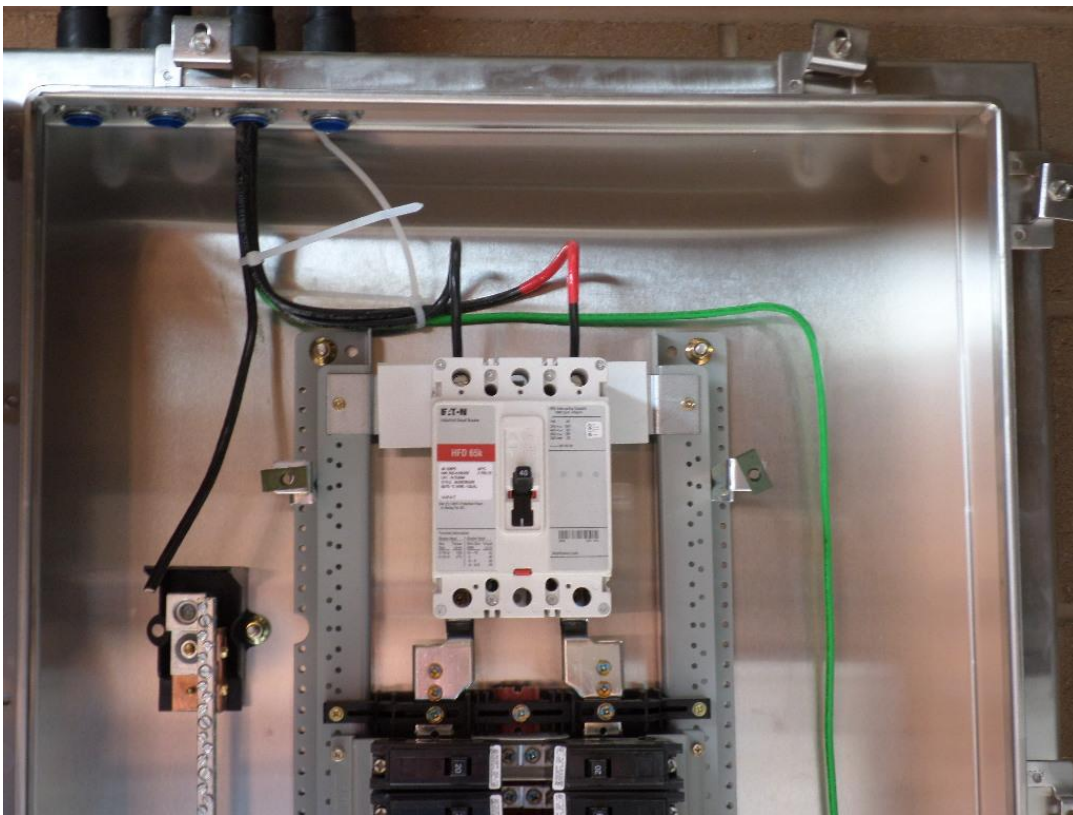
Spieß installing conduit.



Hopkins testing chemical feed pump.



Chemical analyzer piping being installed.



St. Denis Electric terminating main electrical feed at Panel A.



St. Denis Electric pulling wires.



Central Coast Fence installing fence posts.





Central Coast Fence installing new fence.

## **Eureka Well Site**

### **Summary of Work:**

Chemical feed pumps were installed and tested, chlorine analyzers were installed, conduit was completed, wiring pulled and door hardware installed.

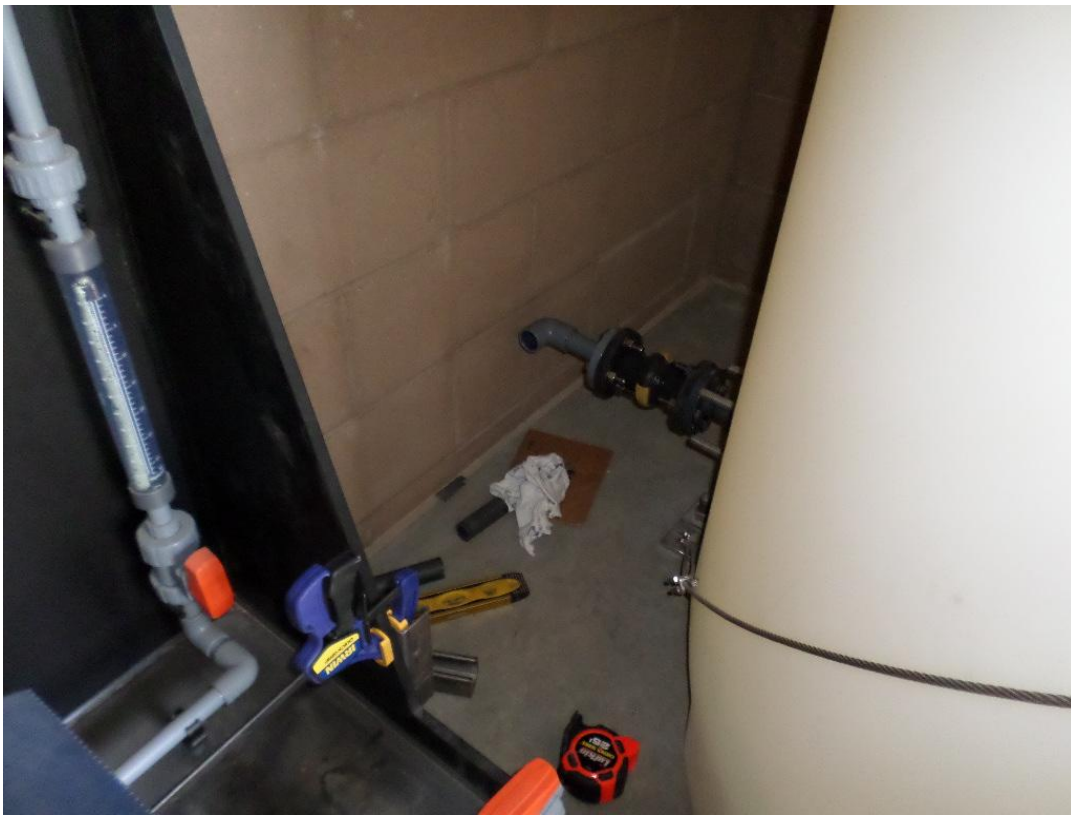
### **Pictures:**



Underground conduit being installed by St. Denis Electric.



Lighting being installed by St. Denis Electric.



Spiess installing chemical piping at Eureka.



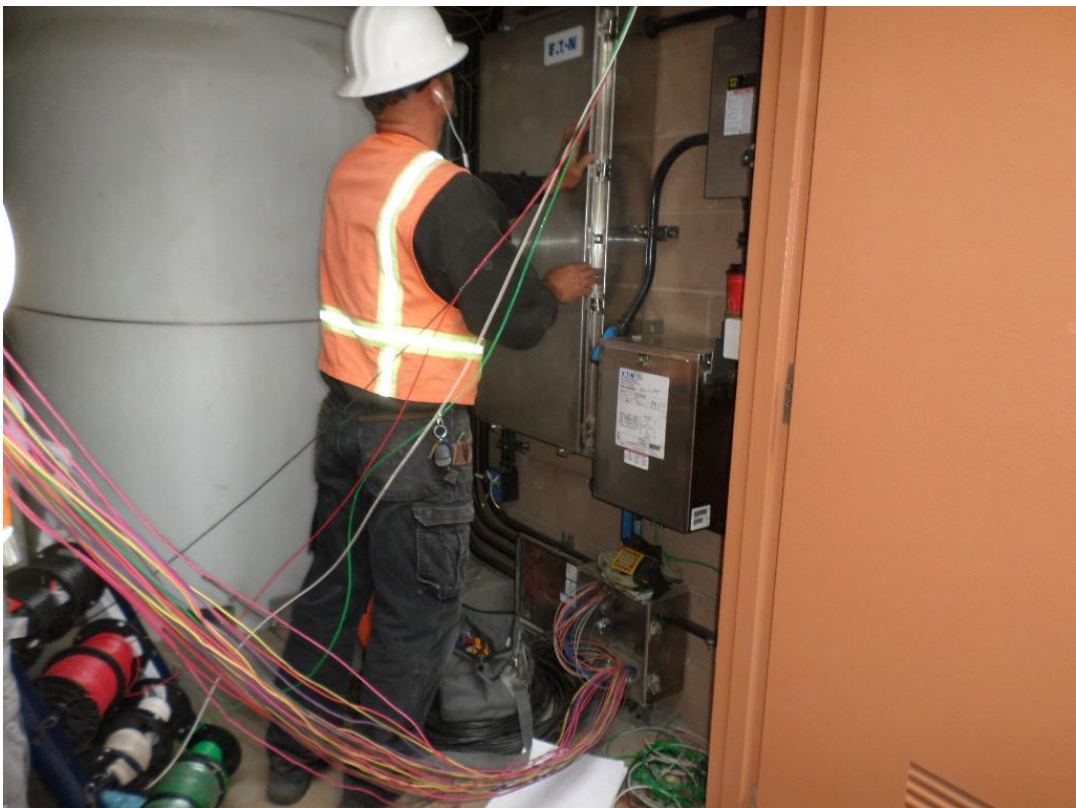
St. Denis installing conduit at Eureka.



Conduit being installed by St. Denis Electric.



Testing chemical pumps.



St. Denis Electric pulling wire.



Installing door hardware.