



TO: Mario Iglesias, GM NCSD

RE: Fall 2020 GWI

DATE: December 22, 2020

Page 2

1 of new NSWP water brought to the Nipomo Mesa is that the return flow increases the amount  
2 of groundwater available for future production.

3 The 2020 Key Well Index (KWI) value (11.7 ft msl) has decreased from the previous year  
4 (15.9 ft msl), and remains in the Severe Water Shortage Condition (see Methodology for KWI  
5 explanation). The KWI generally follows the same historical trends as the GWI (Figure 1).

## 6 **METHODOLOGY**

7 The calculation of spring and fall GWI are based on GSE measurements regularly made by  
8 San Luis Obispo County Department of Public Works (SLO DPW), NCSD, USGS, and  
9 Woodlands. The integration of GSE data is accomplished by using computer software to  
10 interpolate between measurements and calculate GWI within the principal production aquifer  
11 assuming an unconfined aquifer and a specific yield of 11.7 percent. Limited measurements of  
12 GSE were available for the years 1982, 1983, 1984, 1994 and 1997, precluding a reliable  
13 calculation of GWI for those years.

### 14 **Groundwater Surface Elevation Measurements**

15 Groundwater surface elevation data were obtained from SLO DPW, NCSD, USGS, and  
16 Woodlands. SLO DPW measures GSE in monitoring wells during the spring (April) and the fall  
17 (October) of each year. Woodlands and NCSD measures GSE in their monitoring wells  
18 monthly. For the years 1975 to 1999, available representative GSE data were used to compute  
19 GWI. For the years 2000 to 2017, only GSE data from the same 45 wells were used to compute  
20 GWI.

21 The GSE data was reviewed in combination with well completion reports and historical  
22 hydrographic records in order to exclude measurements that likely do not accurately represent  
23 static water levels within the principal production aquifer. Wells that do not access the  
24 principal production aquifer or were otherwise determined to not accurately represent static  
25 water levels within the aquifer were not included in analysis.

### 26 **Groundwater Surface Interpolation**

27 The individual GSE measurements from each year were used to produce a GSE field by  
28 interpolation using the inverse distance weighting method.

### 29 **Ground Water Index**

30 The GWI is defined as the annually normalized value of the saturated volume above sea  
31 level and bedrock multiplied by the specific yield of 11.7 percent. The GWI is comprised from  
32 approximately 45 ground water elevation measurements made by the County of San Luis  
33 Obispo each April and October. The value of the Ground Water Index was computed for an  
34 area approximately similar to the NMMA Boundary. The base of the saturated volume is mean

TO: Mario Iglesias, GM NCSD

RE: Fall 2020 GWI

DATE: December 22, 2020

Page 3

1 sea level surface (elevation equals zero) or the bedrock, whichever is higher. The bedrock  
2 surface elevation is based on Figure 11: Base of Potential Water-Bearing Sediments, presented in  
3 the report, Water Resources of the Arroyo Grande - Nipomo Mesa Area (DWR 2002). The  
4 bedrock surface elevation was preliminarily verified by reviewing driller reports obtained from  
5 DWR. The specific yield is based on the average weighted specific yield measurement made at  
6 wells within the Nipomo Mesa Hydrologic Sub-Area (DWR 2002, pg. 86). The GWI is similar to  
7 the Key Well Index presented in the Nipomo Mesa Management Area Technical Group annual  
8 report to the Court, but is not directly comparable.

### 9 **Key Well Index**

10 The Key Well Index (KWI) was developed by the NMMA Technical Group from eight  
11 inland wells representing the whole of the groundwater basin within the NMMA. The Key  
12 Well Index was defined for each year from 1975 to present as the average of the normalized  
13 spring groundwater data from each well. The lowest value of the Key Well Index could be  
14 considered the "historical low" within the NMMA.

15

### 16 **REFERENCES**

17 Department of Water Resources (DWR). 2002. Water Resources of the Arroyo Grande - Nipomo  
18 Mesa Area, Southern District Report. 2002.

19

TO: Mario Iglesias, GM NCSD

RE: Fall 2020 GWI

DATE: December 22, 2020

Page 4

**Spring and Fall  
Groundwater Index  
(GWI)**

Year	Rainfall Water Year (inches)	Spring GWI (Acre-Feet)	Number of Wells	Fall GWI (Acre-Feet)	Number of Wells	Spring to Fall Difference (Acre-Feet)
1975	17.29	99,000	54	91,000	54	8,000
1976	13.45	82,000	45	76,000	65	6,000
1977	10.23	64,000	59	54,000	63	10,000
1978	30.00	84,000	62	---	35	---
1979	15.80	72,000	57	77,000	63	(5,000)
1980	16.57	88,000	55	89,000	46	(1,000)
1981	14.32	97,000	46	75,000	47	22,000
1982	18.58	123,000	42	---	31	---
1983	33.09	---	35	95,000	42	---
1984	10.38	---	14	76,000	37	---
1985	12.20	106,000	37	82,000	41	24,000
1986	16.85	98,000	51	67,000	51	31,000
1987	11.29	83,000	48	71,000	52	12,000
1988	12.66	80,000	51	66,000	49	14,000
1989	12.25	59,000	47	47,000	57	12,000
1990	7.12	62,000	55	49,000	53	13,000
1991	13.18	62,000	52	55,000	54	7,000
1992	15.66	61,000	52	35,000	48	26,000
1993	20.17	72,000	54	52,000	61	20,000
1994	12.15	60,000	54	---	36	---
1995	25.87	87,000	35	74,000	52	13,000
1996	16.54	76,000	45	62,000	57	14,000
1997	20.50	---	20	91,000	48	---
1998	33.67	105,000	41	93,000	44	12,000
1999	12.98	106,000	56	88,000	49	18,000
2000	14.47	108,000	44	84,000	41	24,000
2001	21.62	118,000	43	85,000	35	33,000
2002	10.25	96,000	29	79,000	41	17,000
2003	11.39	94,000	37	66,000	42	28,000
2004	12.57	89,000	42	81,000	35	8,000
2005	22.23	98,000	38	79,000	39	19,000
2006	20.83	107,000	44	78,000	41	29,000
2007	7.11	93,000	44	66,000	42	27,000
2008	15.18	83,000	43	65,000	42	18,000
2009	10.31	76,000	44	65,000	43	11,000
2010	20.07	80,000	45	67,000	42	13,000
2011	34.05	87,000	43	81,000	43	6,000
2012	15.35	89,000	45	65,000	44	24,000
2013	8.07	67,000	45	42,000	43	25,000
2014	4.72	57,000	45	47,000	42	10,000
2015	8.65	52,000	42	45,000	39	7,000
2016	11.48	62,000	39	50,000	41	12,000
2017	29.41	70,000	36	52,000	43	18,000
2018	10.16	58,000	42	56,000	38	2,000
2019	23.71	57,000	42	40,000	42	17,000
2020	12.88*	61,000	39	38,000	41	23,000

---: Insufficient for evaluation

\*: Preliminary value

Table 1: Spring and Fall GWI computed from Spring 1975 to Fall 2020.

TO: Mario Iglesias, GM NCSD  
RE: Fall 2020 GWI  
DATE: December 22, 2020  
Page 5

### Spring and Fall Groundwater Index (GWI)

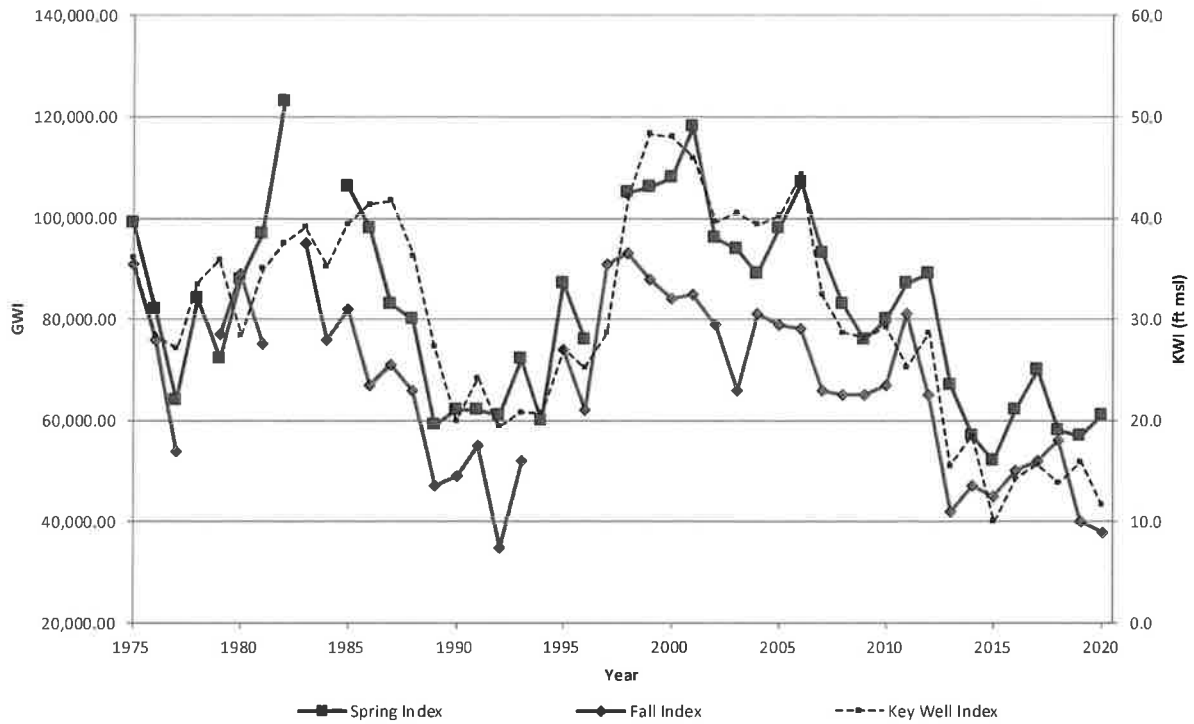
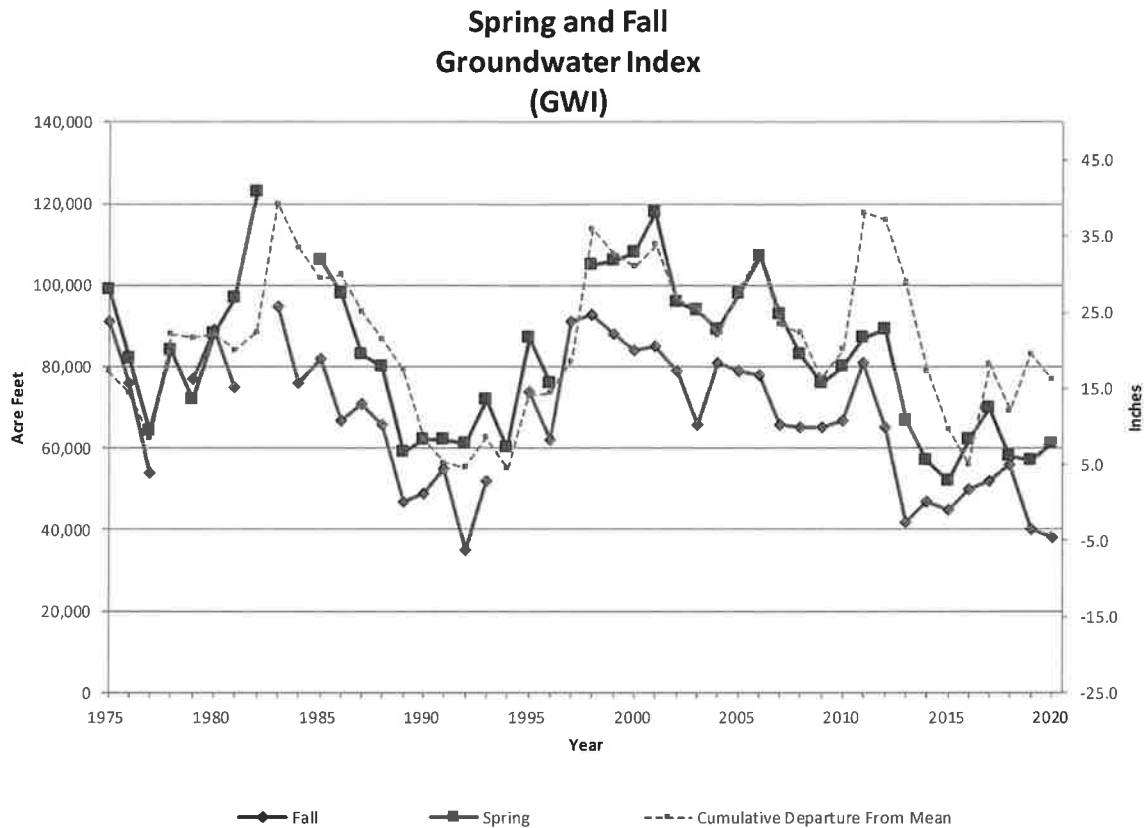


Figure 1: Spring and Fall GWI, and KWI (Spring only) from 1975 to present.

1  
2  
3

TO: Mario Iglesias, GM NCSD  
 RE: Fall 2020 GWI  
 DATE: December 22, 2020  
 Page 6



1  
2  
3

Figure 2: Spring and Fall GWI, and Cumulative Departure of Annual Rainfall from the Mean Rainfall, 1975 to present.

JANUARY 13, 2021

ITEM C-2

ATTACHMENT B

An aerial photograph of a rural landscape, likely a farm or agricultural area, with a yellow boundary line drawn around a central portion of the land. The landscape shows various fields, some green and some brown, and a central area that appears to be a farmstead or a small town. The text is overlaid on the right side of the image.

# Fall 2020 Ground Water Conditions

Prepared by  
Newton **G**eo-**H**ydrology Consulting Services  
January 13, 2021



An aerial photograph of a region, possibly a watershed, with a yellow boundary line tracing its perimeter. A blue horizontal line is drawn across the upper portion of the map. The terrain is a mix of agricultural fields and urban areas.

# OUTLINE

Ground Water Index – Fall 2020  
Key Wells Index 2019  
Rainfall

GWI 1975 - 2020

# GWI

Spring and Fall  
Groundwater Index  
(GW)

Year	Rainfall Water Year (inches)	Spring GWI (Acre-Feet)	Number of Wells	Fall GWI (Acre-Feet)	Number of Wells	Spring to Fall Difference (Acre-Feet)
1975	17.29	99,000	54	91,000	54	8,000
1976	13.45	82,000	45	76,000	65	6,000
1977	10.23	64,000	59	54,000	63	10,000
1978	30.00	84,000	62	---	35	---
1979	15.80	72,000	57	77,000	63	(5,000)
1980	16.57	88,000	55	89,000	46	(1,000)
1981	14.32	97,000	46	75,000	47	22,000
1982	18.58	123,000	42	---	31	---
1983	33.09	---	35	95,000	42	---
1984	10.38	---	14	76,000	37	---
1985	12.20	106,000	37	82,000	41	24,000
1986	16.85	98,000	51	67,000	51	31,000
1987	11.29	83,000	48	71,000	52	12,000
1988	12.66	80,000	51	66,000	49	14,000
1989	12.25	59,000	47	47,000	57	12,000
1990	7.12	62,000	55	49,000	53	13,000
1991	13.18	62,000	52	55,000	54	7,000
1992	15.66	61,000	52	35,000	48	26,000
1993	20.17	72,000	54	52,000	61	20,000
1994	12.15	60,000	54	---	36	---
1995	25.87	87,000	35	74,000	52	13,000
1996	16.54	76,000	45	62,000	57	14,000
1997	20.50	---	20	91,000	48	---
1998	33.67	105,000	41	93,000	44	12,000
1999	12.98	106,000	56	88,000	49	18,000
2000	14.47	108,000	44	84,000	41	24,000
2001	21.62	118,000	43	85,000	35	33,000
2002	10.25	96,000	29	79,000	41	17,000
2003	11.39	94,000	37	66,000	42	28,000
2004	12.57	89,000	42	81,000	35	8,000
2005	22.23	98,000	38	79,000	39	19,000
2006	20.83	107,000	44	78,000	41	29,000
2007	7.11	93,000	44	66,000	42	27,000
2008	15.18	83,000	43	65,000	42	18,000
2009	10.31	76,000	44	65,000	43	11,000
2010	20.07	80,000	45	67,000	42	13,000
2011	34.05	87,000	43	81,000	43	6,000
2012	15.35	89,000	45	65,000	44	24,000
2013	8.07	67,000	45	42,000	43	25,000
2014	4.72	57,000	45	47,000	42	10,000
2015	8.65	52,000	42	45,000	39	7,000
2016	11.48	62,000	39	50,000	41	12,000
2017	29.41	70,000	36	52,000	43	18,000
2018	10.16	58,000	42	56,000	38	2,000
2019	23.71	57,000	42	40,000	42	17,000
2020	12.88*	61,000	39	38,000	41	23,000

---: Insufficient for evaluation  
\*: Preliminary value

Fall 2020

# GWI

Spring and Fall  
Groundwater Index  
(GWI)

Year	Rainfall Water Year (inches)	Spring GWI (Acre-Feet)	Number of Wells	Fall GWI (Acre-Feet)	Number of Wells	Spring to Fall Difference (Acre-Feet)
2006	20.83	107,000	44	78,000	41	29,000
2007	7.11	93,000	44	66,000	42	27,000
2008	15.18	83,000	43	65,000	42	18,000
2009	10.31	76,000	44	65,000	43	11,000
2010	20.07	80,000	45	67,000	42	13,000
2011	34.05	87,000	43	81,000	43	6,000
2012	15.35	89,000	45	65,000	44	24,000
2013	8.07	67,000	45	42,000	43	25,000
2014	4.72	57,000	45	47,000	42	10,000
2015	8.65	52,000	42	45,000	39	7,000
2016	11.48	62,000	39	50,000	41	12,000
2017	29.41	70,000	36	52,000	43	18,000
2018	10.16	58,000	42	56,000	38	2,000
2019	23.71	57,000	42	40,000	42	17,000
2020	12.88*	61,000	39	38,000	41	23,000

2008	15.18	83,000	43	65,000	42	18,000
2009	10.31	76,000	44	65,000	43	11,000
2010	20.07	80,000	45	67,000	42	13,000
2011	34.05	87,000	43	81,000	43	6,000
2012	15.35	89,000	45	65,000	44	24,000
2013	8.07	67,000	45	42,000	43	25,000
2014	4.72	57,000	45	47,000	42	10,000
2015	8.65	52,000	42	45,000	39	7,000
2016	11.48	62,000	39	50,000	41	12,000
2017	29.41	70,000	36	52,000	43	18,000
2018	10.16	58,000	42	56,000	38	2,000
2019	23.71	57,000	42	40,000	42	17,000
2020	12.88*	61,000	39	38,000	41	23,000

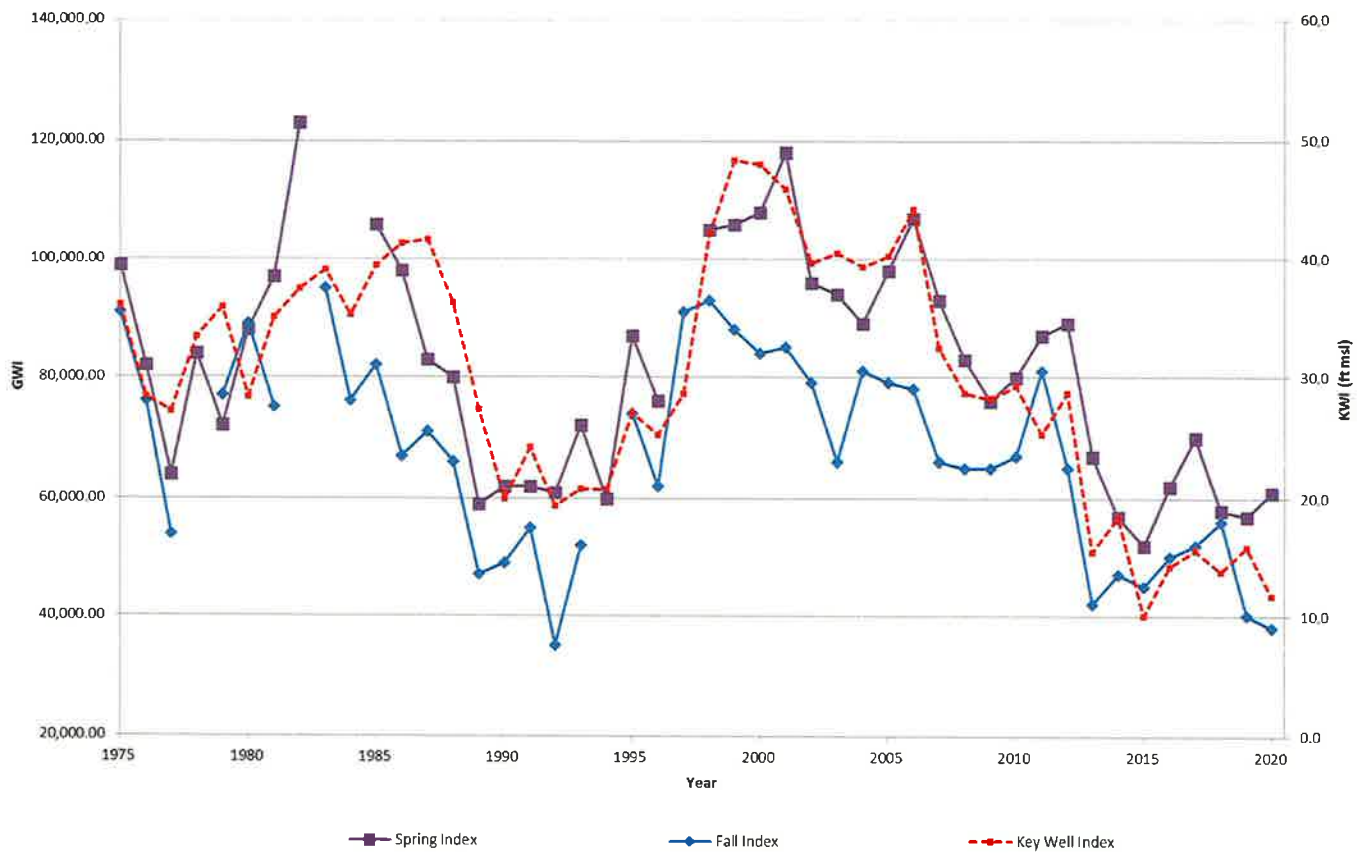
—: Insufficient for evaluation

\*: Preliminary value

\*: Preliminary value

# GWI and KWI

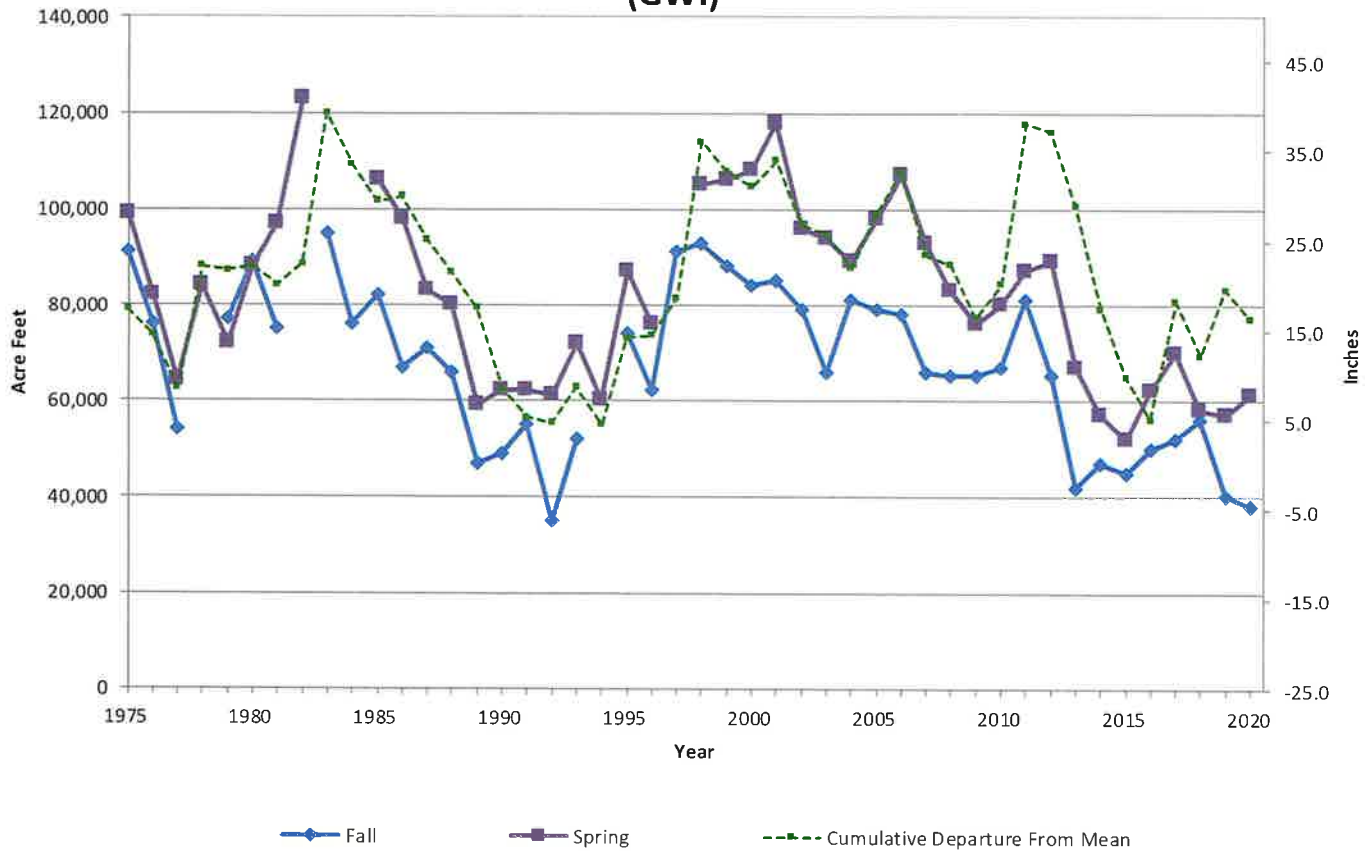
Spring and Fall  
Groundwater Index  
(GWI)



GWI - CDMR

# GWI – KWI - Rainfall

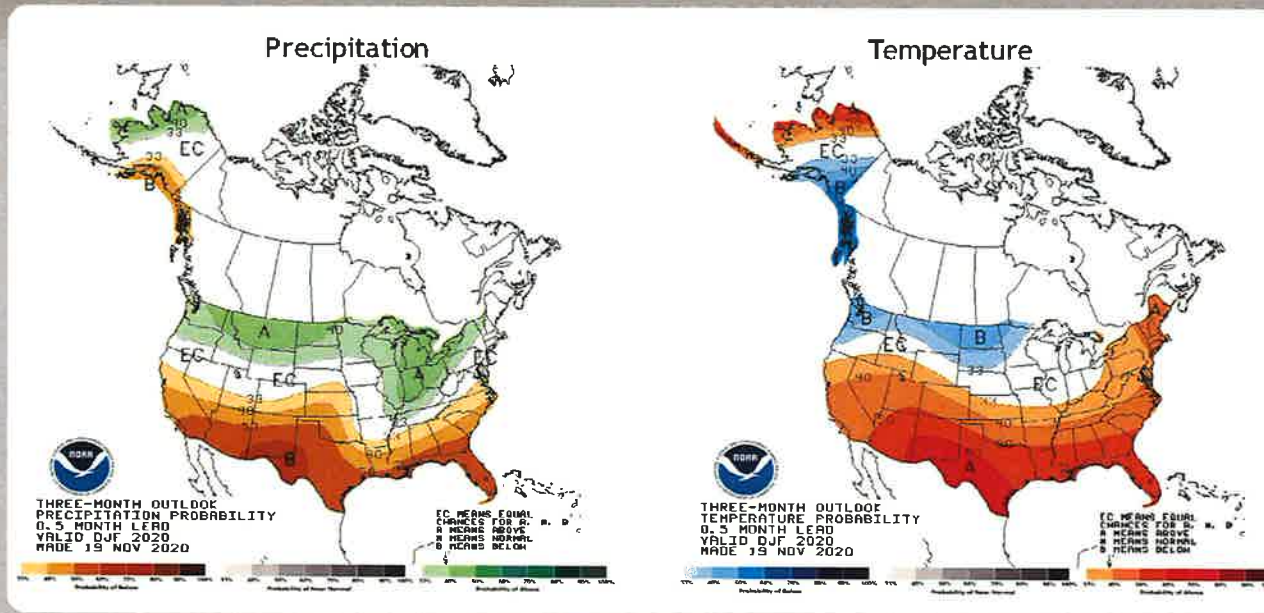
### Spring and Fall Groundwater Index (GWI)



# Dec – Feb 2021 Rainfall Forecast

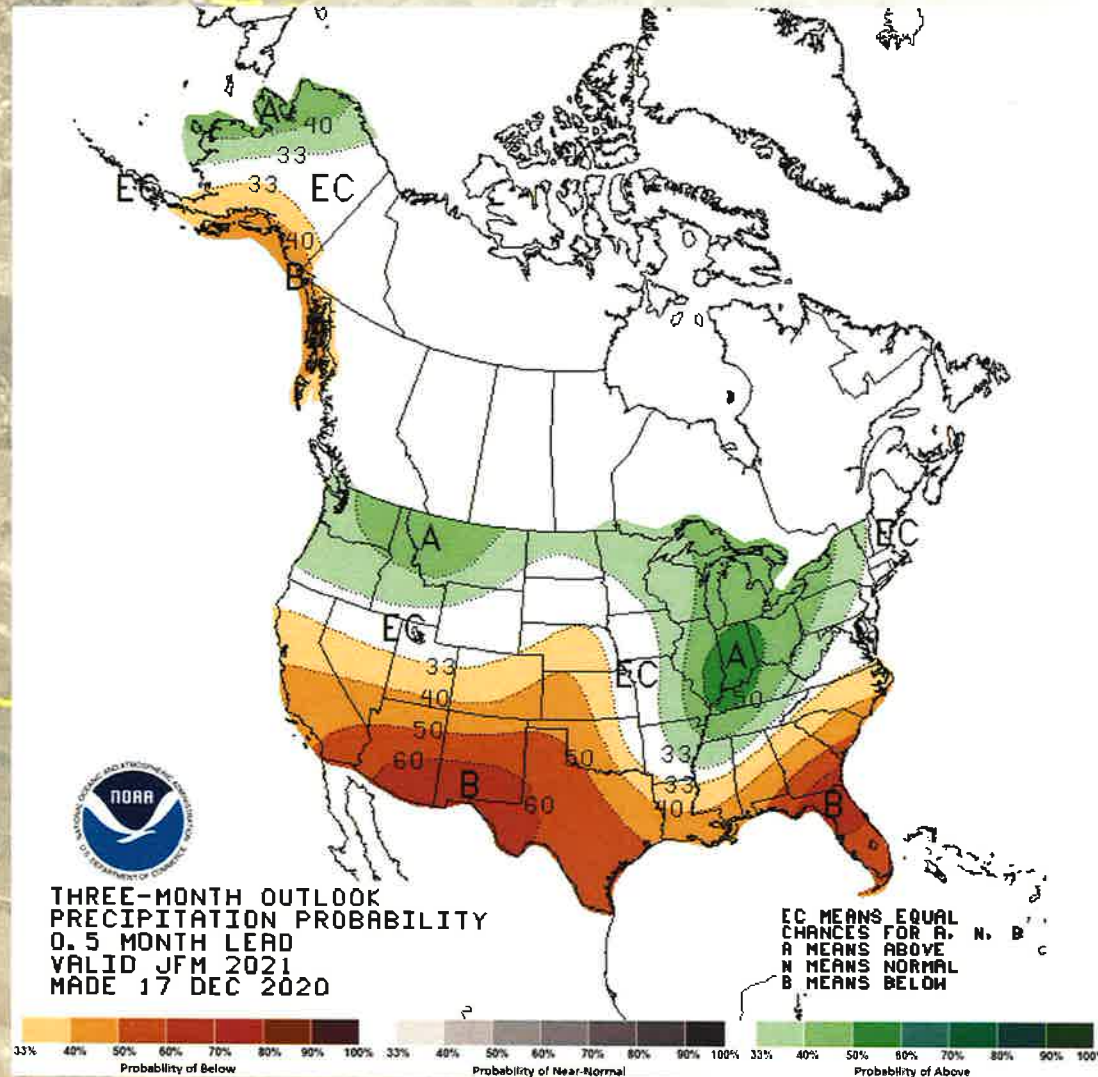
## U. S. Seasonal Outlooks December 2020-February 2021

The seasonal outlooks combine the effects of long-term trends, soil moisture, and, when appropriate, ENSO.



2021 Forecast

# Jan – Mar 2021 Rainfall Forecast





# QUESTIONS?