



District News



Board of Directors Award Supplemental Water Project Contracts

On June 20, 2013, the Board of Directors awarded \$14.5M in construction contracts and \$2M in construction related contracts for the Supplemental Water Project Phase I. This award of contracts is the 'beginning of the end' for the District's 20-year quest to obtain a second source of water to supplement its groundwater only supply. The project will construct a water line interconnecting the District's water system with that of the City of Santa Maria. The project is expected to be complete by late 2014. Following completion of the pro-

ject, the District will purchase a portion of its water from the City. Construction is now underway. In the coming months, drilling activities will take place on the south end of the Mesa and on the south side of the Santa Maria River levee. A 2,600 foot long pipe will be installed under the river using horizontal drilling methods which greatly reduce the impact within the river bed environment. Construction crews will also be working along Blosser Road in the City of Santa Maria installing a mile of 24-inch water line to connect with

the City's main water infrastructure. The project is being financed by a \$2.2M grant from the State and \$14.3 million in District funds – both reserves and bond funds secured by District water rates and property tax income. The District has spent nearly \$4M developing the project since 2005. The funds for developing the project came from supplemental water charges collected from new customers added to the District's system since 2005.

Nipomo Community Services District
148 South Wilson Street, Nipomo, CA
93444

Board of Directors

Jim Harrison
President

Larry Vierheilg
Vice President

Dan A. Gaddis
Director

Bob Blair
Director

Craig Armstrong
Director

Staff

Michael S. LeBrun
General Manager

Lisa Bognuda
Finance Director

Peter Sevcik
Director of Engineering and
Operations

Jessica Matson
Public Information Assistant

Inside this issue:

Southland Wastewater Facility Update 2

Don't Flush the Wipes! 2

Meet the Director of Engineering and Ops 3

Tampering with Meters 3

FAQs 3

Important Dates 4

Nipomo Continues to Experience Critical Levels of Groundwater

Water levels in key wells on the Nipomo mesa have declined significantly. If groundwater levels fall much further between now and next spring, the District could be ordered to reduce pumping, thereby making less water available to District customers. Since groundwater is currently the District's only source of water, **we are urging all of our customers to use water wisely and to conserve water where possible.**

For conservation tips and ideas, visit www.ncsd.ca.gov and click on the "Save Water, Save Money" quick link.



\$75 REBATE for High-Efficiency Washers!

Save Water, Save Money!

Nipomo Community Services District
www.ncsd.ca.gov | 805.929.1133



To find out if you are eligible for the \$75 clothes washer rebate, visit the NCSD website at www.ncsd.ca.gov, click on the "High Efficiency Washer Rebate" link under Quick Links, then scroll down for the clothes washer rebate information and application

If you have any questions, stop by the office at 148 S. Wilson in Nipomo or call NCSD at 929-1133.

Update on Southland Wastewater Treatment and Reclamation Facility Upgrade

Construction is now approximately 50% complete on a significant upgrade to the District's Southland Wastewater Treatment and Reclamation Facility. Once the project is complete it will replace the current pond-based plant and provide advanced



treatment and improved plant discharge quality. At the July 10th Board meeting, the District's Board of Directors authorized the General Manager to approve a change order in the amount of \$876,900 with Cushman Contracting Corporation for the construction of additional disposal facilities as part of the ongoing project. The District awarded the project's \$10.2M construction contract to Cushman Contracting Corpora-

tion in June 2012. Project bid documents included an additive alternate bid item for additional on-site disposal facilities. To date, anticipated Project costs are well within budget, allowing the District sufficient funding to construct the additional disposal facilities. The expansion of disposal facilities will provide additional surface area for disposal of highly treated plant discharge and increase the on-site disposal capacity by more



than 100,000 gallons per day, adding years to the useful life of 'on-site' disposal facilities. The expansion gives the District additional time to develop off-site disposal facilities to meet the future needs of the Nipomo community.

Don't flush the wipes! - Where to Dispose Household Items

Many household products do not dissolve (nondegradable) and are detrimental to not only a home's pipes but also the public sewer system's pipes.

When nondegradable wipes (including baby wipes, cleaning wipes, and rags) are flushed they bind together to form extremely long ropes and plug the sewer pipes (as shown in the pictures to the far right).



When disposing of the wipes, please throw them in the trash can or purchase wipes that will dissolve (are degradable).

Being mindful of what you flush down the toilet can save you a plumbing bill and also help save your community's sewer system. It takes several hours and is costly to unplug the sewer system from items such as wipes.



For information on where to dispose of household hazardous waste items such as batteries, motor oil & antifreeze, medication, electronics and more, contact the Integrated Waste Management Authority of San Luis Obispo County at 805-782-8530 or visit www.iwma.com



WE WANT TO HEAR FROM YOU!

Send us your comments, questions and suggestions to info@ncsd.ca.gov

Meet the District's Director of Engineering and Operations

The District hired Mr. Peter Sevcik in 2007 as District Engineer. Peter came to the District with seventeen years of diverse experience in the water and wastewater field. Peter holds a bachelor's degree in civil engineering from the University of Illinois. He also holds a master's degree in Public Administration from Nova Southeastern University and is a California licensed Professional Civil Engineer. Peter's work experience prior to coming to the District

included the development and implementation of numerous water and wastewater infrastructure projects, making him a particularly good fit for the District. Since coming to the District, Peter has been instrumental in getting the District capital improvement plan implemented including; replacing a mile of aging, at-capacity sewer trunk line, coordinating with San Luis Obispo County to install new water main in the Willow Road extension, upgrading the Dis-

trict's operations monitoring and control system, and most significantly, getting both the \$13M Southland sewer plant upgrade and \$17M supplemental water project designed and under construction. When the District's Utilities Superintendent retired this past spring, Peter assumed the title of Director of Engineering and Operations and took over responsibility for the District's eleven person operations staff, and the 24/7 operation of the District's two wastewater treatment and reclamation plants, wastewater collection system and water supply.



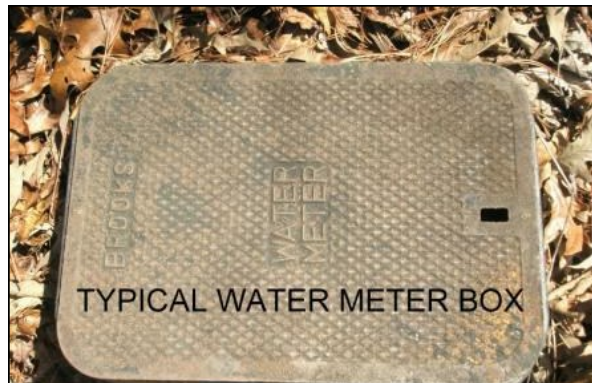
Peter Sevcik,
Professional Engineer (PE)

Peter and his wife Ana are raising their two young boys in the nearby community of Orcutt. The family enjoys camping and sports.

Don't Tamper with Water Meters—Just Call the District!

Water meters are an important tool for understanding and monitoring water use. Water meters belong to the District and tampering with the meter can lead to fines.

From time to time you may need to turn off your water due to an emergency. If you must do this, look for a valve located on the



Call the District for help. The District will send a worker out to turn off your meter, at no charge.

outside of your home where the water line goes into the house. Your sprinkler systems may have a separate valve.

The District's water meter box (shown in picture) should only be accessed by District staff if your own valves do not work. The District water meter valve requires a special tool.

Frequently Asked Questions

What is a water service charge?

The charge shown on your bill is the service charge for having water service available at your connection 24 hours per day, 7 days per week, 365 days per year.

What is the Sewer charge?

The Sewer charge shown on your bill is the service charge to pay for operating the sewer collection system, treatment plant and safe reintroduction of treated waste water back into the environment.

Who fixes a leak?

NCSD maintains the entire water system up to and including the water meter. It is the customers' responsibility to fix any water leak that happens after the water meter (customer side of meter).



We welcome your feedback and questions! If you have a question you would like us to answer, feel free to contact info@ncsd.ca.gov

Providing the community with reliable, quality, and cost-effective services now and in the future.

Phone: 805-929-1133 | Fax: 805-929-1932 | E-mail: info@ncsd.ca.gov | www.ncsd.ca.gov

148 South Wilson Street, Nipomo, CA 93444
Nipomo Community Services District



Upcoming Meetings and Dates to Remember

Wed, August 14th @ 9:00 am

Board Meeting at NCSO Office
(public welcome)

Wed, September 25th @ 9:00 am

Board Meeting at NCSO Office
(public welcome)

Mon, September 2nd

District Office closed for
Labor Day

Wed, October 9th @ 9:00 am

Board Meeting at NCSO Office
(public welcome)

Wed, September 11th @ 9:00 am

Board Meeting at NCSO Office
(public welcome)

Wed, October 23rd @ 9:00 am

Board Meeting at NCSO Office
(public welcome)

Check ncsd.ca.gov for updates

Pay your bill online!

www.ncsd.ca.gov

For customer convenience, Nipomo Community Services District continues to offer an online bill paying service. This service accepts Visa, Master Card, Discover, and American Express, as well as debit cards and e-checks. Customers can also pay in the office Monday - Friday 8:00am - 4:30pm, except holidays. There is a payment drop box in the driveway.

CONSERVATION TIP

Spreading a layer of organic mulch around plants retains moisture and saves water, time and money.



www.slowaterwiselandscaping.com