

TO: BOARD OF DIRECTORS
FROM: MARIO IGLESIAS
GENERAL MANAGER
DATE: September 20, 2019

**AGENDA ITEM
F
SEPTEMBER 25, 2019**

GENERAL MANAGER'S REPORT

ITEM

Standing report to your Honorable Board -- *Period covered by this report is September 8, 2019 through September 21, 2019.*

DISTRICT BUSINESS

Administrative

The District encourages residents to provide reports of any observed water waste. The District keeps an accounting of leak adjustments as a measure of non-revenue water lost to leaks as well as tracking late fee waivers. The table below provides August and Fiscal Year-to-date data on these items.

Office Activities

	<u>Aug-19</u>	<u>July 19 - Aug 2019</u>
Reports of Water Waste	0	0
Leak Adjustments	1	2
Leak Adjustment Amount	\$136	\$362
Late Fee Waivers	15	22
Late Fee Waiver Adjustment Amount	\$585	\$880

Water Resources

Table 1. Total Production Acre Feet (AF)

	<u>Aug-19</u>	<u>Jul 19 - Aug 19</u>
Groundwater Production	119.7	241.5
Supplemental Water Imported	<u>85.0</u>	<u>170.1</u>
Total Production	<u>204.7</u>	<u>411.6</u>

NCSD imported 85 AF of water over the 31 day period in August averaging 622 gallons per minute for an average total of 895,004 gallons per day. For fiscal year 2019-20 the District must import at least 800 AF of supplemental water to meet its contractual obligation with the City of Santa Maria.

The District's total production, including groundwater wells and imported water measured at the Joshua Road Pump Station, registered 204.7 AF for the month and 411.6 AF for the Fiscal Year 2020.

Table 2 compares the District’s total water production for the month of August and the fiscal year (July 2019 through August 2019) total against the same period for 2013 (pre-drought production). The Department of Water Resources (“DWR”) designated 2013 as the pre-drought production year. The pre-drought production data is included in the monthly water production report and compared to current usage, all of which is submitted by water purveyors statewide to DWR. There is no mandated by DWR at this time for the District to reach a particular conservation level. For August 2019, the community’s water conservation effort reached

Table 2. FY 2020 Total Demand To-date Compared to 2013

	Aug-19	July 1 – Aug 2019
Total Production (AF) for FY 2019-20	204.7	411.6
Total Production (AF) for 2013	<u>274.4</u>	<u>556.8</u>
Reduction (AF)	<u>69.7</u>	<u>145.2</u>
Percentage Reduction	<u>25.4%</u>	<u>26.1%</u>

approximately 25.4% compared to August 2013. The District’s year-to-date conservation effort reached 26.1 % for the fiscal year and will continue to be monitored.

NCSD GW Reduction

The District’s purveyor customers, Golden State Water Company and Woodlands Mutual Water Company, each claim 16.66% (cumulatively 33.33%) of the imported water NCSD brings onto the basin through the NSWP. Of the 800 AF minimum imported water from the City of Santa Maria, 266.6 AF will be credited to these two purveyor customers. The credited amount must be added to the District’s groundwater pumping total every month to reflect the groundwater pumped by these customers in-lieu of taking imported water from the District. Table 3 below demonstrates the calculus for determining the District’s groundwater pumping reduction.

Table 3. NCSD GW Production (NCSD GW Well Production plus Purveyor Credit)

	Aug-19	Jul 19 - Aug 19
NCSD GW Well Production	119.8	241.5
Purveyor Customer Credit (33.3% of Import Water)	<u>28.3</u>	<u>56.7</u>
NCSD Total Calculated GW Production	148.0	298.2
Average GW Production for 2009-2013	<u>284.7</u>	<u>575.9</u>
NCSD Percentage of GW Reduction	48.0%	48.2%

Taking into consideration the above referenced purveyor customer credit, the District can claim a groundwater pumping reduction of 48% for the month of August compared to the 5-year average from 2009 to 2013 (NMMA-TG assigned comparator). For Fiscal Year 2020, the total groundwater pumping reduction for the District is 48.2%. At the current Stage IV level of NMMA’s Water Shortage Condition and Response Plan, the District is short of achieving its targeted groundwater pumping reduction level of 50% for the year. However, July and August are typically higher water use months and it is not uncommon to balance out water use in

winter months and, by the end of the fiscal year, have the District's groundwater reduction reach its targeted level of 50%.

2020 Fiscal Year Groundwater Pumping

Table 4 projects the District's groundwater pumping reduction effectiveness for Fiscal Year 2020. The targeted groundwater pumping reduction as stated above is 50%. At current usage through in August 2019, and with the last year's production values for the remaining 10 months inserted, the District is on-track to reach its pumping reduction goals for the fiscal year. The exercise demonstrates that there would be 21.76 AcFt of water available for use before the District exceeded its 50% target. Each year, water use trends slightly differ depending upon the weather – a major factor that drives consumer water demand. Table 4 is an estimating tool.

Table 4. Groundwater Pumping

	Aug-19	Jul-Jun 2020	Target	Over/(Under)
NCSD GW Well Production	119.7	870.9		
Purveyor Customer Credit (33.3% of Import Water)	28.3	323.3		
NCSD Total Calculated GW Production	148.0	1,244.2	1,266.0	21.76 AcFt
Average GW Production for 2009-2013	284.7	2,533.3	2,533.3	
NCSD Percentage of GW Reduction	48%	51%	50.0%	

Table 5. FY 2019 v. FY 2020 Groundwater Pumping

	Aug-19	Jul 19-Aug 19	Aug-18	Jul 18-Aug 18
NCSD GW Well Production	119.7	241.5	123.1	250.6
Purveyor Customer Credit (33.3% of Import Water)	28.3	56.7	28.4	56.7
NCSD Total Calculated GW Production	148.0	298.2	151.5	307.3
Average GW Production for 2009-2013	284.7	575.9	284.7	575.9
NCSD Percentage of GW Reduction	48.0%	48.2%	46.8%	46.6%

Table 5 compares the previous year's groundwater pumping with the current year's groundwater pumping for the same period. The District achieved a slightly greater level of groundwater pumping reduction, 48.2%, for the current fiscal year as compared to the same period, 46.6%, for Fiscal Year 2018-19. This indicator supports staff's conclusion that, all things equal, the District will reach its groundwater pumping reduction target for the fiscal year.

Rainfall Gauge

(Reported in inches)	Nipomo East (Dana Hills Reservoirs)	Nipomo South (Southland Plant)
August 2019 Total	0	0
July-2019 through August-2019 (Seasonal Total)	0	0
July 1, 2019 to August 6, 2019	0	0
Total Rainfall to date	0	0
Average Annual Year Rainfall	18.0 ¹	14.0 ²

Note 1: SLO County Website

https://wr.slocountywater.org/site.php?site_id=3&site=935e7af7-0e94-4042-bc11-e02906d5ba44

Note 2: SLO County Website

https://wr.slocountywater.org/site.php?site_id=2&site=878bfdbf-5c40-4398-8226-418372e4039b

Safety Program

No items to report.

Other Items and News of Interest

Proposition 1 Grant Funding September 23, 2019 Presentation [Attachment A]

Supplemental Water Capacity Accounting

Summary Since January 25, 2008

		Number of Equivalent Meters	AFY
Supplemental Water Available for Allocation		947	500
Supplemental Water Reserved (Will Serve Letter Issued)	116	120	-63.4
Subtotal Net Supplemental Water Available for Allocation	831	827	436.6
Supplemental Water Assigned (Intent-to-Serve Issued)	51.6	54.4	-28.7
Total Remaining Supplemental Water Available for Allocation	779.4	772.6	407.9

As of September 20, 2019 (no change from August 8, 2019)

Connection Report

Nipomo Community Services District
 Water and Sewer Connections

END OF MONTH REPORT

	Jan-19	Feb-19	Mar-19	Apr-19	May-19	Jun-19	Jul-19	Aug-19
Water Connections (Total)	4434	4434	4437	4437	4437	4437	4438	4438
Sewer Connections (Total)	3197	3197	3199	3199	3200	3201	3206	3206
New Water Connections	0	0	3	0	0	0	1	0
New Sewer Connection	0	0	2	0	1	1	5	0
Galaxy & PSHH at Orchard and Division Sewer Connections billed to the County	475	475	475	475	475	475	472	472

The Connection Report is current through September 1, 2019.

Meetings (September 8, through September 21)

Meetings Attended (telephonically or in person):

- Sept 9, Sedaru - Asset Management
- Sept 9, MKN – ADU Mapping
- Sept 10, NMMA-TG Meeting
- Sept 10, Eng/Admin Meeting
- Sept 11, Rotary
- Sept 11, Regular NCSD Board Meeting
- Sept 11, Exec. Team After Board Meeting
- Sept 12, Developer Meeting – Tract 2312
- Sept 13, Lucia Mar School Distr. – Dana Elementary School
- Sept 16, Management Team
- Sept 17, Blacklake Ad Hoc Committee
- Sept 17, Board Officer Meeting
- Sept 18, Developer Meeting - Tompkins
- Sept 19, Garbage Company - Smith
- Sept 20, Santa Barbara County – Flood Control

Meetings Scheduled (August 25 through August 31):

Upcoming Meetings (telephonically or in person):

- Sept 23, Prop. 1 Presentation – Salinas Office DWR
- Sept 24, Eng/Admin Meeting
- Sept 24, Sensus Metering Co.
- Sept 25, Rotary
- Sept 25, Regular NCSD Board Meeting
- Sept 26, NMMA Manager's Meeting
- Sept 26, Blacklake/NCSD Oversight Committee

Upcoming Water Resource and Other Meetings

Upcoming Standing Meetings:

- NMMA-TG: October 15th (Tuesday) @ 10:00 AM, NCSD Board Room
- RWMG: October 2nd @ 10:00 AM, SLO Library
- WRAC: October 2nd @ 1:30 PM, SLO Library
- NMMA Purveyor Meeting: September 26th @ 11:00 AM, NCSD Conf. Rm

RECOMMENDATION

Staff seeks direction and input from your Honorable Board

ATTACHMENTS

- A. Proposition 1 Grant Funding September 23, 2019 Presentation

SEPTEMBER 25, 2019

ITEM F

ATTACHMENT A

NIPOMO COMMUNITY SERVICE DISTRICT



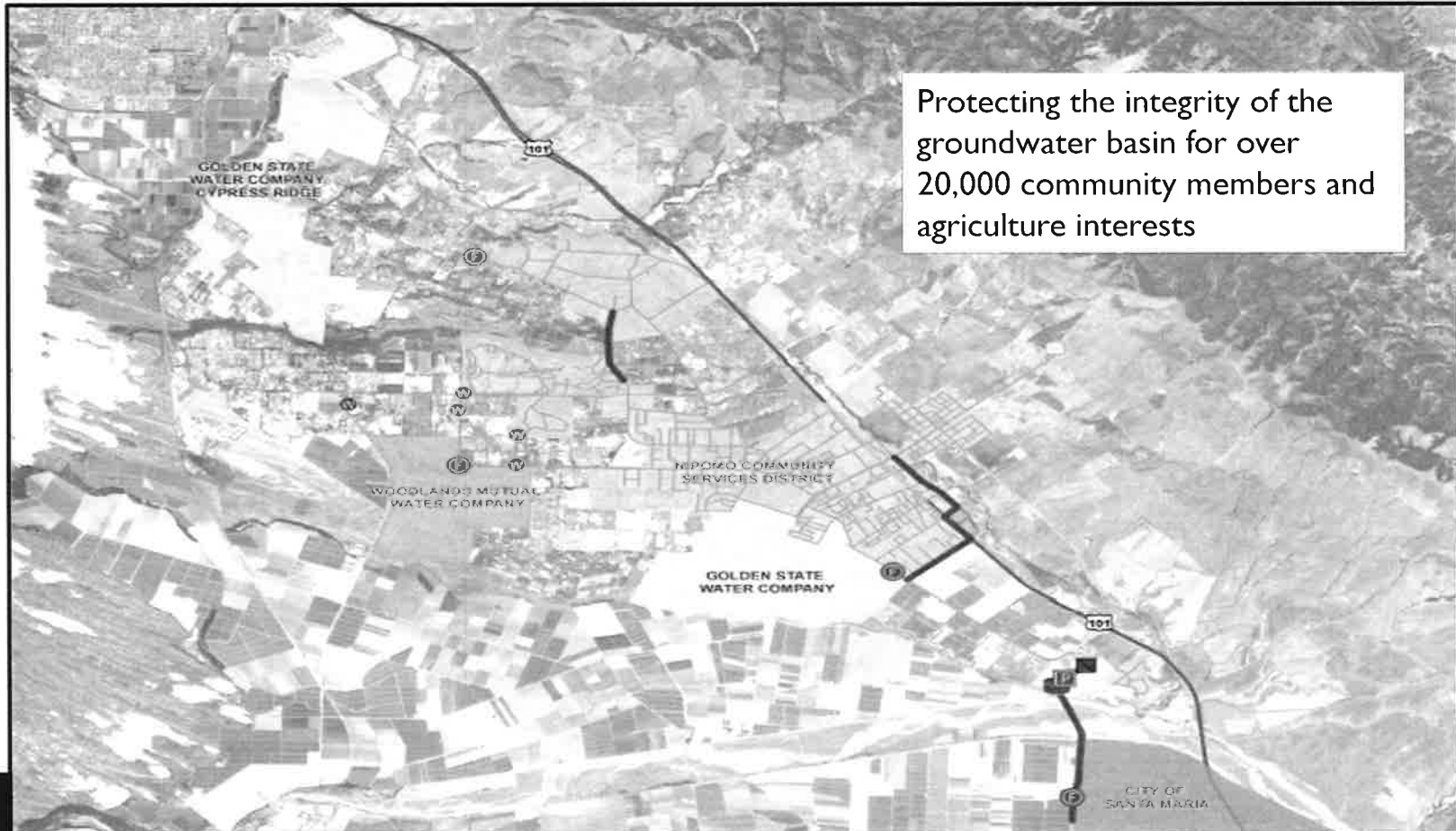
FINAL PHASE

NIPOMO SUPPLEMENTAL WATER

PROJECT




NIPOMO SUPPLEMENTAL WATER PROJECT



Protecting the integrity of the groundwater basin for over 20,000 community members and agriculture interests

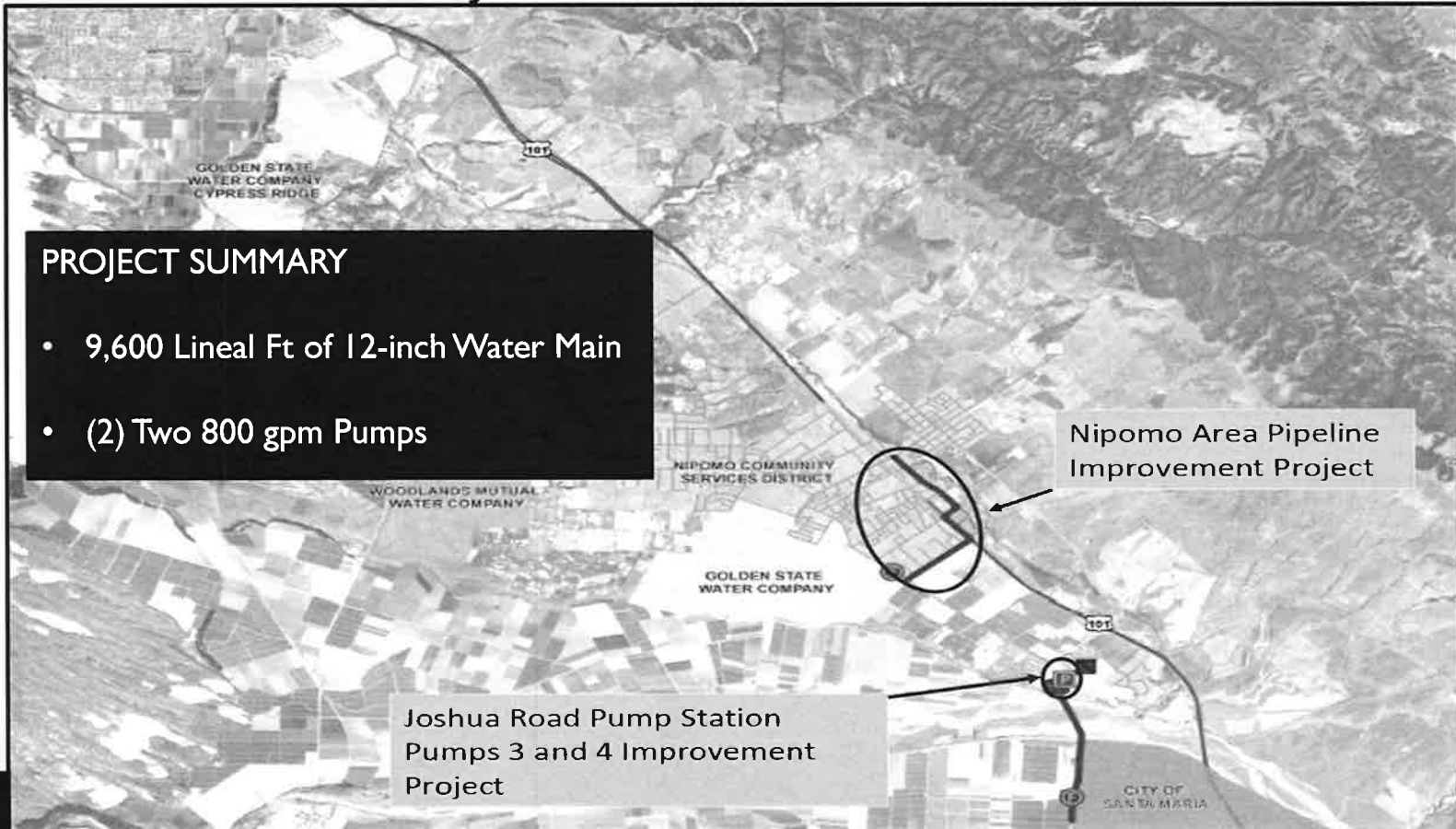
NIPOMO SUPPLEMENTAL WATER PROJECT

- The **Nipomo Area Pipeline Improvement Project** and **Joshua Road Pump Station Pumps 1 and 2 Improvement Project (“Project”)** are the final elements of the Nipomo Supplemental Water Project (“NSWP”) as originally conceived. The NSWP will convey and distribute up to 3,000 AF/Yr of water imported from the City of Santa Maria to the water purveyors on the Mesa.
 - In its final form, the NSWP is a regional water conveyance facility that integrates five separate water systems, Nipomo CSD, Woodlands Mutual Water Company, City of Santa Maria, Golden State Water Company Nipomo and Golden State Water Company Cypress Ridge.
- 

SUMMARY OF PROJECT

PROJECT SUMMARY


- 9,600 Lineal Ft of 12-inch Water Main
- (2) Two 800 gpm Pumps



PROJECT PRESENTATION OUTLINE

- Overview

- Project Summary
- Justification
- Alternatives
- Past Grant Funding
- Operations & Maintenance
- Stakeholder Coordination


- Project Summary
 - Work Plan
 - Budget
 - Schedule
- 

OVERVIEW

- Project Summary
 - Nipomo Supplemental Water Project
 - Conversion of disinfectant at 5 well sites
 - Construct Joshua Road Pump Station (JRPS)
 - Construct pipeline connecting City of Santa Maria with NCSD system
 - Construct interconnections with purveyor partners
 - Construct 500,000 Gallon Post Stressed Concrete Reservoir
 - Construct Nipomo Area Pipeline Improvement Project
 - Install (2) two 100 hp pump and motors at JRPS

OVERVIEW

• Meeting Statewide Priorities

- #2 - Increase Regional Self-Reliance and Integrated Water Management .
. Across All Levels of Government
 - #5 - Manage and Prepare for Dry Periods
 - #6 - Expand Water Storage Capacity and Improve Groundwater
. Management
 - #7 – Provide Safe Water for All Communities
- 

OVERVIEW

- Justification: Project addresses several IRWM critical water resource needs.
 - Water Supply
 - "Maximizes accessibility of water" by constructing a water conveyance system that meets the District's current and future water demand; aids in the "adequacy of water supply" to surrounding water supplies thereby creating a regional water supply other than groundwater
 - Groundwater
 - "Supports local groundwater management" by making available import water as a means to off-set groundwater pumping where needed and as defined through a cooperative regional management area
 - Water Resource Management.
 - Addresses "local basin management objectives" by moving water from inland areas to coastal areas thereby reducing groundwater pumping in areas most vulnerable to seawater intrusion

OVERVIEW

- Project Alternatives
 - Two Major Studies Evaluating Alternatives
 - Evaluation of Supplemental Water Alternatives – June 2007 Boyle Eng. Corp.
 - NCSD Supplemental Water Alternatives Evaluation Comm. – March 2013
- Past Grant Funding
 - Proposition 84 Grant Funds – Phase I of the NSWP :\$2.2 mil
 - District submitted Project Completion Report to DWR 9/2016
 - Project Funding Monitoring Completed 2019


OVERVIEW

- Project Operations & Maintenance
 - The multiple individual projects that make up the Nipomo Supplemental Water Project are folded into O&M cost paid by rate payers and purveyor partners (Golden State Water Company, Woodlands Mutual Water Company)
- Stakeholder Coordination
 - Since 2015, District and purveyor partners have been operating under an agreement for cost and water supply benefit sharing of the project.
 - District has a long-term agreement with the City of Santa Maria for conveying water through Project.

WORK PLAN

- Nipomo Area Pipeline Improvement Project
 - Approximately 9600 lineal feet of 12-inch diameter PVC waterline
 - Installation of 2@800 gallon per minute pumps at the District's Joshua Road Pump Station.

These additional infrastructure improvements will increase the supplemental water delivery capability of the NSWV from 1000 acre-feet per year (AFY) to 3000 AFY.




BUDGET

Nipomo Community Services District Funding Request

- District is limiting funding request to the Const./Implementation Line
 - **Table I – Project Budget (d)**
 - Cost Share from District Funds - \$3,000,000
 - Request Grant Amount - \$800,000
 - Engineering Cost developed by District Engineer
 - Previous Phases (1 & 2) Both Completed within Budgets

SCHEDULE

- Project Schedule

- Bid – September 2019
 - Award – December 2019
 - Complete – September 2020
-
- A. CEQA is completed
 - B. All permits (County & Caltrans) have been acquired.
 - C. All permits are acquired.
 - D. Access to properties needed to complete Project are in County or Caltrans right-of-ways.
- 

QUESTIONS?

