


TO: BOARD OF DIRECTORS  
FROM: MARIO IGLESIAS  
GENERAL MANAGER   
DATE: JUNE 17, 2021



## **PRESENTATIONS AND REPORTS**

The following presentations and reports are scheduled:

- C-1) SPRING 2021 GROUNDWATER INDEX REVIEW, NEWTON GEO-HYDROLOGY CONSULTING SERVICES [RECOMMEND RECEIVE REPORT]
- C-2) DIRECTORS' ANNOUNCEMENTS OF DISTRICT AND COMMUNITY INTEREST AND REPORTS ON ATTENDANCE AT PUBLIC MEETINGS, TRAINING PROGRAMS, CONFERENCES AND SEMINARS.  
Receive Announcements and Reports from Directors
- C-3) RECEIVE PUBLIC COMMENT ON PRESENTATIONS AND REPORTS PRESENTED UNDER ITEM C AND BY MOTION RECEIVE AND FILE PRESENTATIONS AND REPORTS

TO: BOARD OF DIRECTORS

FROM: MARIO IGLESIAS  
GENERAL MANAGER



DATE: JUNE 18, 2021

# AGENDA ITEM C-1

JUNE 23, 2021

## SPRING 2021 GROUNDWATER INDEX REVIEW, NEWTON GEO-HYDROLOGY CONSULTING SERVICES

### ITEM

Presentation of the spring groundwater index for the Nipomo Mesa area. [RECOMMEND RECEIVE REPORT]

### BACKGROUND

Doctor Brad Newton will review recent work to update the Ground Water Index and will provide a presentation of the Spring 2021 Ground Water Index reading.

Doctor Newton's report and the Ground Water Index is an independent work product of the District and is not reviewed by the Nipomo Mesa Management Area Technical group.

### FISCAL IMPACT

Funds for preparation of this report are included in the FY 2020-21 Budget.

### STRATEGIC PLAN

Goal 1. WATER SUPPLIES. Actively plan to provide reliable water supply of sufficient quality and quantity to serve both current customers and those in the long-term future.

1.6 Continue to monitor and participate in water supply issues and programs with other local and regional organizations

### RECOMMENDATION

Staff recommends that the Board receive the Report and give direction to staff.

### ATTACHMENTS

- A. Spring 2021 Groundwater Index Presentation
- B. Draft Technical Memorandum #42 – Spring 2021 Ground Water Index

JUNE 23, 2021

ITEM C-1

ATTACHMENT A

An aerial photograph of a rural landscape, likely a farm or agricultural area, with a yellow boundary line drawn around a central portion of the land. The landscape features a mix of green fields, brownish soil, and some buildings or structures. The text is overlaid on the right side of the image.

# Spring 2021 Ground Water Conditions

Prepared by  
Newton Geo-Hydrology Consulting Services  
June 23, 2021

An aerial photograph of a rural landscape, likely a valley or basin, showing a mix of green fields and brownish-grey areas. A prominent yellow line traces an irregular boundary across the terrain. A solid blue horizontal line is drawn across the upper portion of the image. The text 'OUTLINE' is positioned in the top right corner.

# OUTLINE

Ground Water Index – Spring 2021  
Key Wells Index 2021  
Rainfall

GW Index 1975 - 2021

# GW Index

Spring and Fall  
Groundwater Index  
(GW)

Year	Rainfall Water Year (inches)	Spring GWI (Acre-Feet)	Number of Wells	Fall GWI (Acre-Feet)	Number of Wells	Spring to Fall Difference (Acre-Feet)
1975	17.29	99,000	54	91,000	54	8,000
1976	13.45	82,000	45	76,000	65	6,000
1977	10.23	64,000	59	54,000	63	10,000
1978	30.00	84,000	62	—	35	—
1979	15.80	72,000	57	77,000	63	(5,000)
1980	16.57	88,000	55	89,000	46	(1,000)
1981	14.32	97,000	46	75,000	47	22,000
1982	18.58	123,000	42	—	31	—
1983	33.09	—	35	95,000	42	—
1984	10.38	—	14	76,000	37	—
1985	12.20	106,000	37	82,000	41	24,000
1986	16.85	98,000	51	67,000	51	31,000
1987	11.29	83,000	48	71,000	52	12,000
1988	12.66	80,000	51	66,000	49	14,000
1989	12.25	59,000	47	47,000	57	12,000
1990	7.12	62,000	55	49,000	53	13,000
1991	13.18	62,000	52	55,000	54	7,000
1992	15.66	61,000	52	35,000	48	26,000
1993	20.17	72,000	54	52,000	61	20,000
1994	12.15	60,000	54	—	36	—
1995	25.87	87,000	35	74,000	52	13,000
1996	16.54	76,000	45	62,000	57	14,000
1997	20.50	—	20	91,000	48	—
1998	33.67	105,000	41	93,000	44	12,000
1999	12.98	106,000	56	88,000	49	18,000
2000	14.47	108,000	44	84,000	41	24,000
2001	21.62	118,000	43	85,000	35	33,000
2002	10.25	96,000	29	79,000	41	17,000
2003	11.39	94,000	37	66,000	42	28,000
2004	12.57	89,000	42	81,000	35	8,000
2005	22.23	98,000	38	79,000	39	19,000
2006	20.83	107,000	44	78,000	41	29,000
2007	7.11	93,000	44	66,000	42	27,000
2008	15.18	83,000	43	65,000	42	18,000
2009	10.31	76,000	44	65,000	43	11,000
2010	20.07	80,000	45	67,000	42	13,000
2011	34.05	87,000	43	81,000	43	6,000
2012	15.35	89,000	45	65,000	44	24,000
2013	8.07	67,000	45	42,000	43	25,000
2014	4.72	57,000	45	47,000	42	10,000
2015	8.65	52,000	42	45,000	39	7,000
2016	11.48	62,000	39	50,000	41	12,000
2017	29.41	70,000	36	52,000	43	18,000
2018	10.16	58,000	42	56,000	38	2,000
2019	23.71	57,000	42	40,000	42	17,000
2020	15.85	61,000	39	38,000	41	23,000
2021	7.33*	34,000	41	—	—	—

—: Insufficient for evaluation  
\*: Preliminary value

# GWI

Spring and Fall  
Groundwater Index  
(GWI)

Year	Rainfall Water Year (inches)	Spring GWI (Acre-Feet)	Number of Wells	Fall GWI (Acre-Feet)	Number of Wells	Spring to Fall Difference (Acre-Feet)
1975	17.29	99,000	54	91,000	54	8,000
1976	13.45	82,000	45	76,000	65	6,000
1977	10.23	64,000	59	54,000	63	10,000

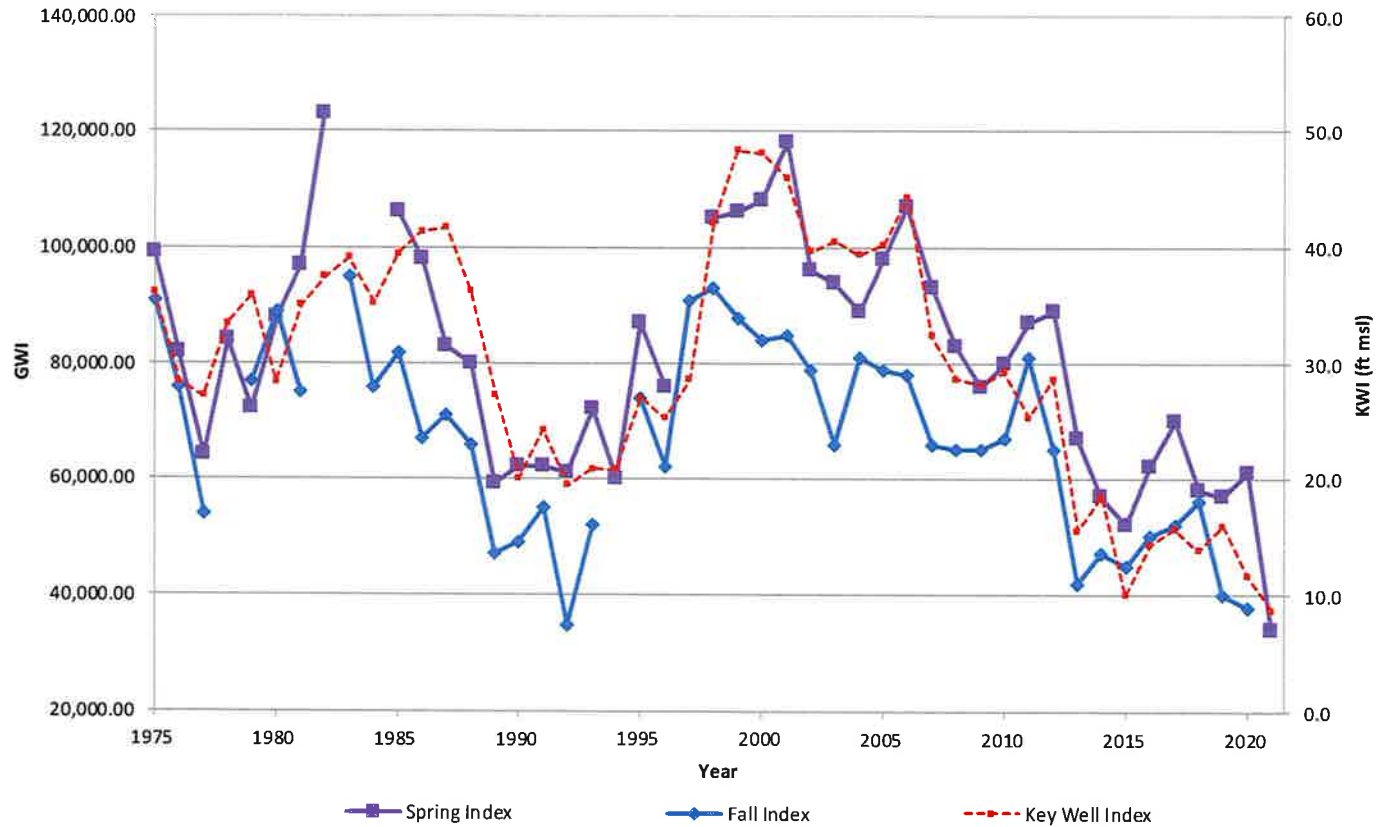
2006	20.83	107,000	44	78,000	41	29,000
2007	7.11	93,000	44	66,000	42	27,000
2008	15.18	83,000	43	65,000	42	18,000
2009	10.31	76,000	44	65,000	43	11,000
2010	20.07	80,000	45	67,000	42	13,000
2011	34.05	87,000	43	81,000	43	6,000
2012	15.35	89,000	45	65,000	44	24,000
2013	8.07	67,000	45	42,000	43	25,000
2014	4.72	57,000	45	47,000	42	10,000
2015	8.65	52,000	42	45,000	39	7,000
2016	11.48	62,000	39	50,000	41	12,000
2017	29.41	70,000	36	52,000	43	18,000
2018	10.16	58,000	42	56,000	38	2,000
2019	23.71	57,000	42	40,000	42	17,000
2020	15.85	61,000	39	38,000	41	23,000
2021	7.33*	34,000	41			

2017	29.41	70,000	36	52,000	43	18,000
2018	10.16	58,000	42	56,000	38	2,000
2019	23.71	57,000	42	40,000	42	17,000
2020	15.85	61,000	39	38,000	41	23,000
2021	7.33*	34,000	41			

---: Insufficient for evaluation  
\*: Preliminary value

# GW and KWI

### Spring and Fall Groundwater Index (GWI)





# Correlation between GWI and CSDMr

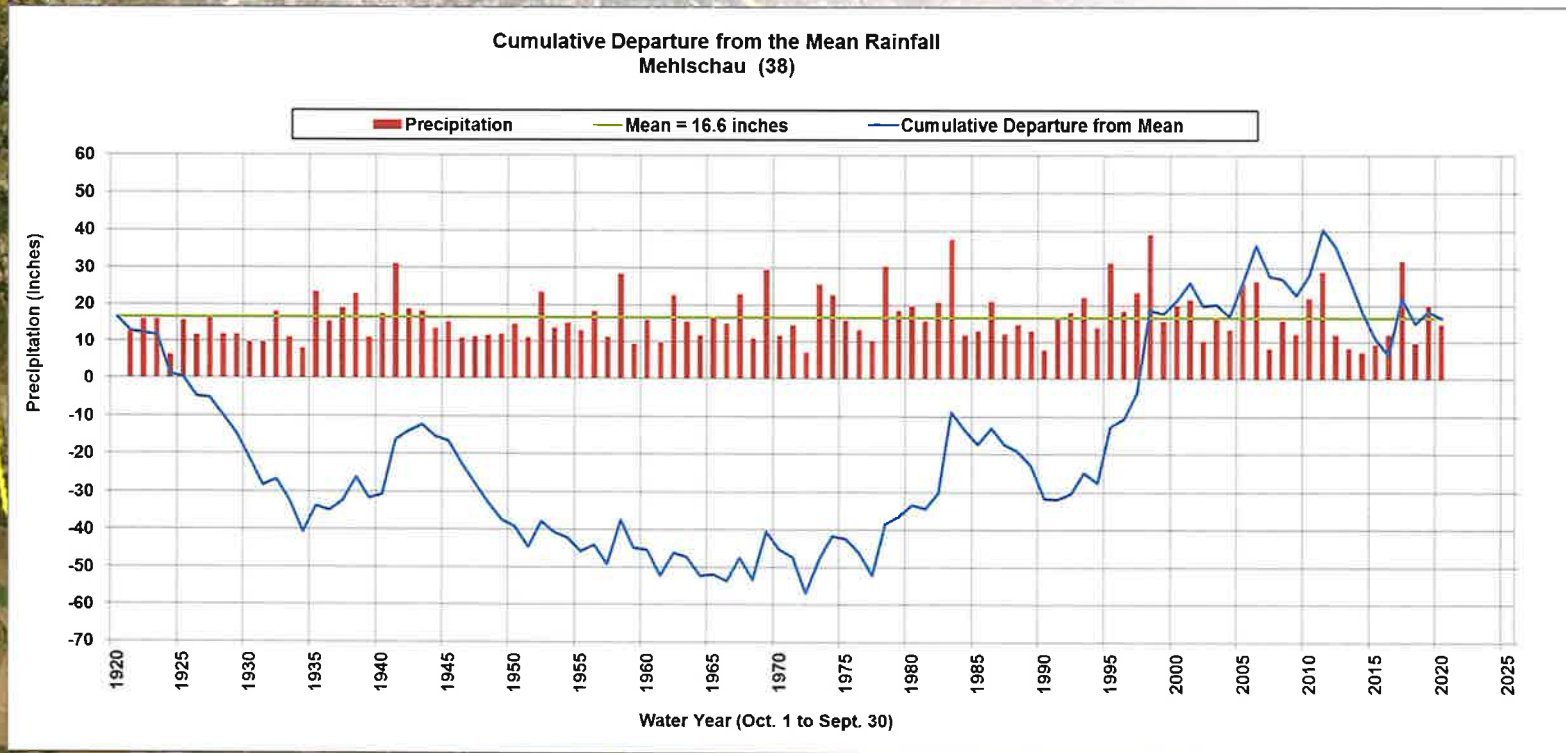
## Summary Water Balance

$$GWI \cong \Delta S_{gw} = R - CU - \Delta S_s + F_{in} - F_{out}$$

Correlation Coefficients		
	<i>Spring GWI (AF)</i>	<i>Rainfall (inches)</i>
Spring GWI (AF)	1	
Rainfall (inches)	0.321931649	1
	<i>Spring GWI (AF)</i>	<i>CSDM<sub>r</sub>, Ave 16.32 (in)</i>
Spring GWI (AF)	1	
CSDM <sub>r</sub> , Ave 16.32 (in)	0.713615266	1
	<i>Spring GWI (AF)</i>	<i>CSDM<sub>r</sub> - Total Production (AF)</i>
Spring GWI (AF)	1	
CSDM <sub>r</sub> - Total Production (AF)	0.746482469	1
	<i>Spring GWI (AF)</i>	<i>CSDM<sub>r</sub> - CU Prod (AF)</i>
Spring GWI (AF)	1	
CSDM <sub>r</sub> - CU Prod (AF)	0.816018004	1
	<i>Spring GWI (AF)</i>	<i>CSDM<sub>r</sub> + Net F (AF)</i>
Spring GWI (AF)	1	
CSDM <sub>r</sub> + Net F (AF)	0.811533071	1
	<i>Spring GWI (AF)</i>	<i>CSDM<sub>r</sub> - CU Prod + Net F (AF)</i>
Spring GWI (AF)	1	
CSDM <sub>r</sub> - CU Prod + Net F (AF)	0.816884199	1

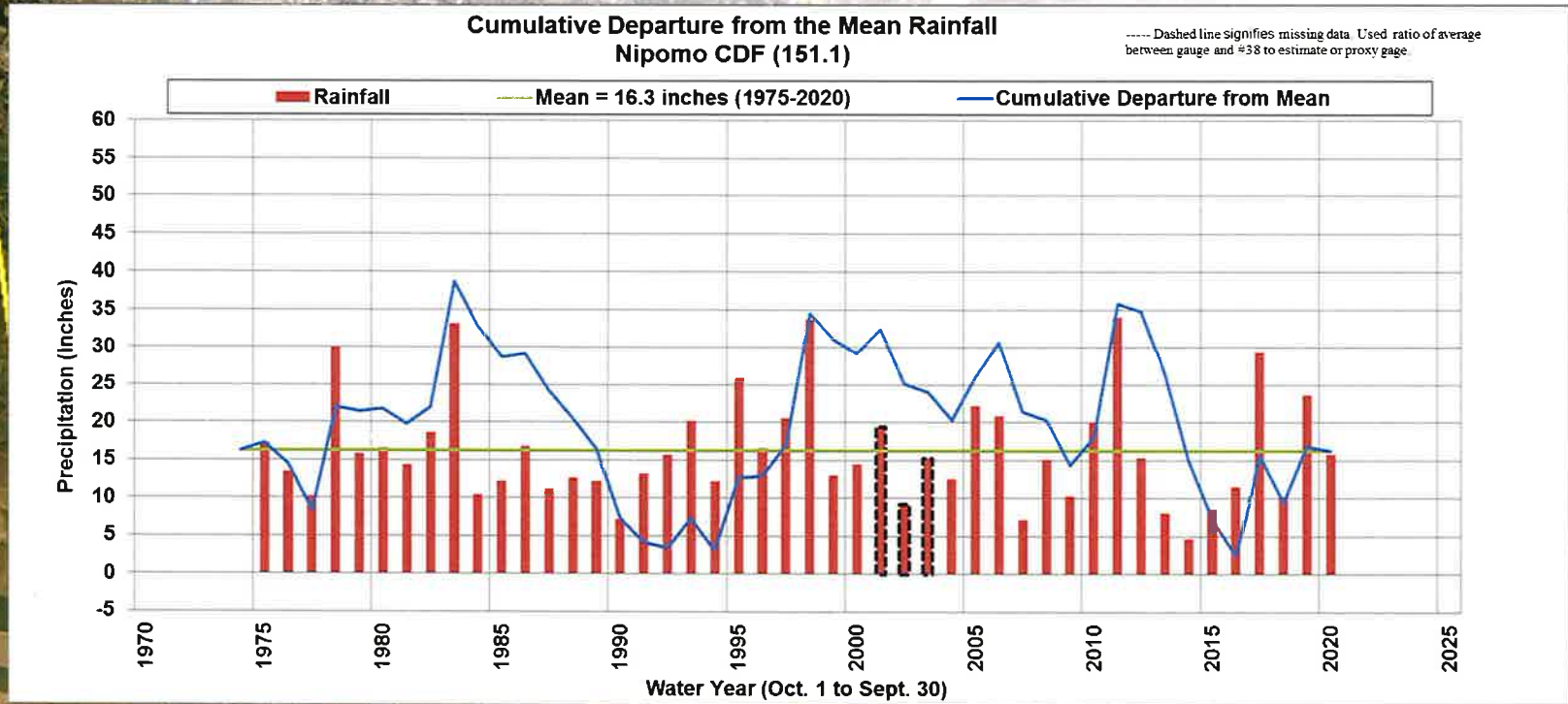
Rainfall @ Mehlschau (#38) 1921 - 2020

# GWI and CSDMr



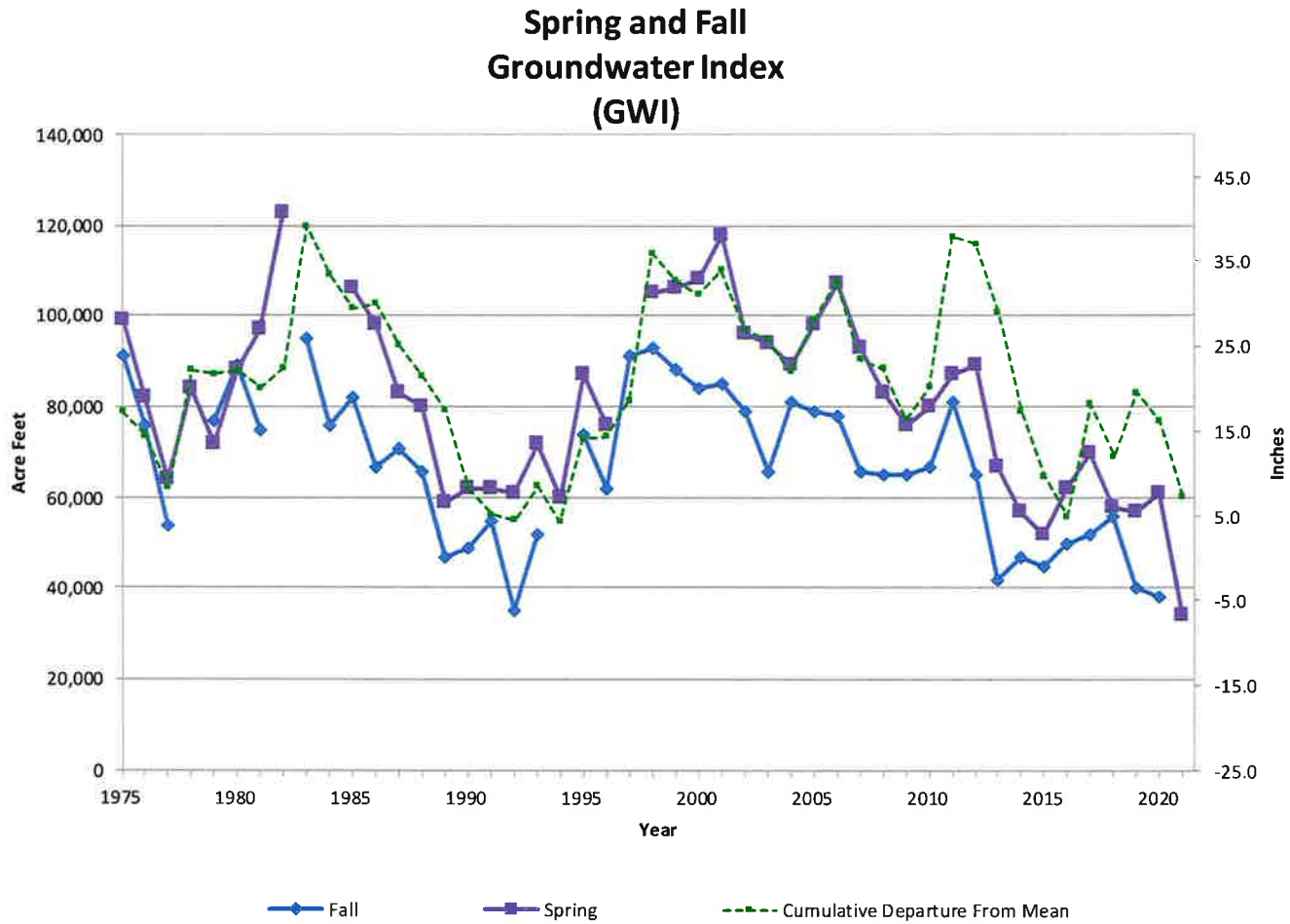
Rainfall @ Melschau (#38) 1921 - 2020

# GWI and CSDMr



GWI - CDMR

# GWI – KWI - Rainfall



An aerial photograph of a rural landscape, possibly a valley or a river basin. The terrain is a mix of green fields, brownish-grey agricultural plots, and some buildings. A prominent yellow line traces a boundary across the landscape, starting from the top left, curving around the top, and then following a path through the fields towards the bottom. A solid blue horizontal line is drawn across the upper portion of the image, roughly parallel to the top edge of the yellow boundary. The word "QUESTIONS?" is centered in the middle of the image in a large, bold, black, sans-serif font.

**QUESTIONS?**


JUNE 23, 2021

ITEM C-1

ATTACHMENT B



1 **TECHNICAL MEMORANDUM**

2  
3 **TO:** Mario Iglesias, General Manager NCSD  
4 **FROM:** Brad Newton, Ph.D., P.G.   
5 **RE:** Draft Technical Memorandum #42 – Spring 2021 Ground Water Index  
6 **DATE:** June 15, 2021

---

7 **INTRODUCTION**

8 Groundwater surface elevations (GSE) underlying the Nipomo Mesa are regularly  
9 measured at many places (wells) across the mesa. The Spring 2021 Ground Water Index (GWI)  
10 has been computed from GSE measurements collected during spring across the Nipomo Mesa  
11 and presented herein along with historical GWI from 1975 to present. Limited measurements of  
12 GSE were available for the years 1978, 1982, 1983, 1984, 1994 and 1997, precluding a reliable  
13 calculation of GWI for those years.

14 **The Nipomo Mesa Management Area (NMMA) Technical Group (TG) has not**  
15 **reviewed this technical memorandum, its findings, or any presentation of this evaluation.**

16  
17 **RESULTS**

18 The Spring 2021 GWI is 34,000 AF (Table 1, Figure 1), a decrease from last year (61,000 AF  
19 in spring and 38,000 AF in fall). The GWI has been in decline since the turn of the century,  
20 despite the minor increases that occurred in 2006, 2012, and 2017. The decline in the GWI is  
21 largely responding to less than average annual rainfall of 14.16 inches per year since 2012. The  
22 estimated rainfall for this year is approximately 7.33 inches, 45 percent of the average annual  
23 rainfall of 16.3 inches for the complete record from 1975 to present. Average annual rainfall  
24 from 1975 to 2011 is 16.83 inches per year, slightly above the long-term average annual rainfall  
25 of 16.3 inches per year. The longest local rainfall record is from 1921 to present measured at the  
26 Mehlschau Ranch (Gauge #38) with an average annual rainfall of 16.58 inches per year.

27 Generally, the GWI has been in decline since the turn of the century, even while rainfall  
28 was slightly above average from 1998 to 2012 (Figure 2). Consumptive use of ground water  
29 produced is certainly a contributing factor to the GWI (Technical Memorandum #30 - Fall 2014  
30 Ground Water Index and Hydrologic Inventory Analysis, December 10, 2014). Consumptive  
31 use of ground water produced is the only significant component of the hydrologic inventory  
32 that is currently being managed through conservation and the new water brought to the  
33 Nipomo Mesa through the Nipomo Supplemental Water Project (NSWP). An additional benefit

*c:\users\miglesias\appdata\local\microsoft\windows\inetcache\content.outlook\g982x8w1\20210617 tm#42 gwi s2021.doc*

TO: Mario Iglesias, GM NCSD  
RE: Spring 2021 GWI  
DATE: June 15, 2021  
Page 2

1 of new NSW water brought to the Nipomo Mesa is that the return flow increases the amount  
2 of groundwater available for future production.

3 The 2021 Key Well Index (KWI) value (8.7 ft msl) has decreased from the previous year  
4 (11.7 ft msl), and remains in the Severe Water Shortage Condition (see Methodology for KWI  
5 explanation). The KWI generally follows the same historical trends as the GWI (Figure 1).

## 6 **METHODOLOGY**

7 The calculation of spring and fall GWI are based on GSE measurements regularly made by  
8 San Luis Obispo County Department of Public Works (SLO DPW), NCSD, USGS, and  
9 Woodlands. The integration of GSE data is accomplished by using computer software to  
10 interpolate between measurements and calculate GWI within the principal production aquifer  
11 assuming an unconfined aquifer and a specific yield of 11.7 percent. Limited measurements of  
12 GSE were available for the years 1982, 1983, 1984, 1994 and 1997, precluding a reliable  
13 calculation of GWI for those years.

### 14 **Groundwater Surface Elevation Measurements**

15 Groundwater surface elevation data were obtained from SLO DPW, NCSD, USGS, and  
16 Woodlands. SLO DPW measures GSE in monitoring wells during the spring (April) and the fall  
17 (October) of each year. Woodlands and NCSD measures GSE in their monitoring wells  
18 monthly. For the years 1975 to 1999, available representative GSE data were used to compute  
19 GWI. For the years 2000 to 2017, only GSE data from the same 45 wells were used to compute  
20 GWI.

21 The GSE data was reviewed in combination with well completion reports and historical  
22 hydrographic records in order to exclude measurements that likely do not accurately represent  
23 static water levels within the principal production aquifer. Wells that do not access the  
24 principal production aquifer or were otherwise determined to not accurately represent static  
25 water levels within the aquifer were not included in analysis.

### 26 **Groundwater Surface Interpolation**

27 The individual GSE measurements from each year were used to produce a GSE field by  
28 interpolation using the inverse distance weighting method.

### 29 **Ground Water Index**

30 The GWI is defined as the annually normalized value of the saturated volume above sea  
31 level and bedrock multiplied by the specific yield of 11.7 percent. The GWI is comprised from  
32 approximately 45 ground water elevation measurements made by the County of San Luis  
33 Obispo each April and October. The value of the Ground Water Index was computed for an  
34 area approximately similar to the NMMA Boundary. The base of the saturated volume is mean



TO: Mario Iglesias, GM NCSD

RE: Spring 2021 GWI

DATE: June 15, 2021

Page 3

1 sea level surface (elevation equals zero) or the bedrock, whichever is higher. The bedrock  
2 surface elevation is based on Figure 11: Base of Potential Water-Bearing Sediments, presented in  
3 the report, Water Resources of the Arroyo Grande - Nipomo Mesa Area (DWR 2002). The  
4 bedrock surface elevation was preliminarily verified by reviewing driller reports obtained from  
5 DWR. The specific yield is based on the average weighted specific yield measurement made at  
6 wells within the Nipomo Mesa Hydrologic Sub-Area (DWR 2002, pg. 86). The GWI is similar to  
7 the Key Well Index presented in the Nipomo Mesa Management Area Technical Group annual  
8 report to the Court, but is not directly comparable.

### 9 **Key Well Index**

10 The Key Well Index (KWI) was developed by the NMMA Technical Group from eight  
11 inland wells representing the whole of the groundwater basin within the NMMA. The Key  
12 Well Index was defined for each year from 1975 to present as the average of the normalized  
13 spring groundwater data from each well. The lowest value of the Key Well Index could be  
14 considered the "historical low" within the NMMA.

15

### 16 **REFERENCES**

17 Department of Water Resources (DWR). 2002. Water Resources of the Arroyo Grande - Nipomo  
18 Mesa Area, Southern District Report. 2002.

19

TO: Mario Iglesias, GM NCSD  
 RE: Spring 2021 GWI  
 DATE: June 15, 2021  
 Page 4

**Spring and Fall  
 Groundwater Index  
 (GWI)**

Year	Rainfall Water Year (inches)	Spring GWI (Acre-Feet)	Number of Wells	Fall GWI (Acre-Feet)	Number of Wells	Spring to Fall Difference (Acre-Feet)
1975	17.29	99,000	54	91,000	54	8,000
1976	13.45	82,000	45	76,000	65	6,000
1977	10.23	64,000	59	54,000	63	10,000
1978	30.00	84,000	62	---	35	---
1979	15.80	72,000	57	77,000	63	(5,000)
1980	16.57	88,000	55	89,000	46	(1,000)
1981	14.32	97,000	46	75,000	47	22,000
1982	18.58	123,000	42	---	31	---
1983	33.09	---	35	95,000	42	---
1984	10.38	---	14	76,000	37	---
1985	12.20	106,000	37	82,000	41	24,000
1986	16.85	98,000	51	67,000	51	31,000
1987	11.29	83,000	48	71,000	52	12,000
1988	12.66	80,000	51	66,000	49	14,000
1989	12.25	59,000	47	47,000	57	12,000
1990	7.12	62,000	55	49,000	53	13,000
1991	13.18	62,000	52	55,000	54	7,000
1992	15.66	61,000	52	35,000	48	26,000
1993	20.17	72,000	54	52,000	61	20,000
1994	12.15	60,000	54	---	36	---
1995	25.87	87,000	35	74,000	52	13,000
1996	16.54	76,000	45	62,000	57	14,000
1997	20.50	---	20	91,000	48	---
1998	33.67	105,000	41	93,000	44	12,000
1999	12.98	106,000	56	88,000	49	18,000
2000	14.47	108,000	44	84,000	41	24,000
2001	21.62	118,000	43	85,000	35	33,000
2002	10.25	96,000	29	79,000	41	17,000
2003	11.39	94,000	37	66,000	42	28,000
2004	12.57	89,000	42	81,000	35	8,000
2005	22.23	98,000	38	79,000	39	19,000
2006	20.83	107,000	44	78,000	41	29,000
2007	7.11	93,000	44	66,000	42	27,000
2008	15.18	83,000	43	65,000	42	18,000
2009	10.31	76,000	44	65,000	43	11,000
2010	20.07	80,000	45	67,000	42	13,000
2011	34.05	87,000	43	81,000	43	6,000
2012	15.35	89,000	45	65,000	44	24,000
2013	8.07	67,000	45	42,000	43	25,000
2014	4.72	57,000	45	47,000	42	10,000
2015	8.65	52,000	42	45,000	39	7,000
2016	11.48	62,000	39	50,000	41	12,000
2017	29.41	70,000	36	52,000	43	18,000
2018	10.16	58,000	42	56,000	38	2,000
2019	23.71	57,000	42	40,000	42	17,000
2020	15.85	61,000	39	38,000	41	23,000
2021	7.33*	34,000	41			

---: Insufficient for evaluation

\*: Preliminary value

1  
2

Table 1: Spring and Fall GWI computed from Spring 1975 to present.

TO: Mario Iglesias, GM NCSD  
RE: Spring 2021 GWI  
DATE: June 15, 2021  
Page 5

### Spring and Fall Groundwater Index (GWI)

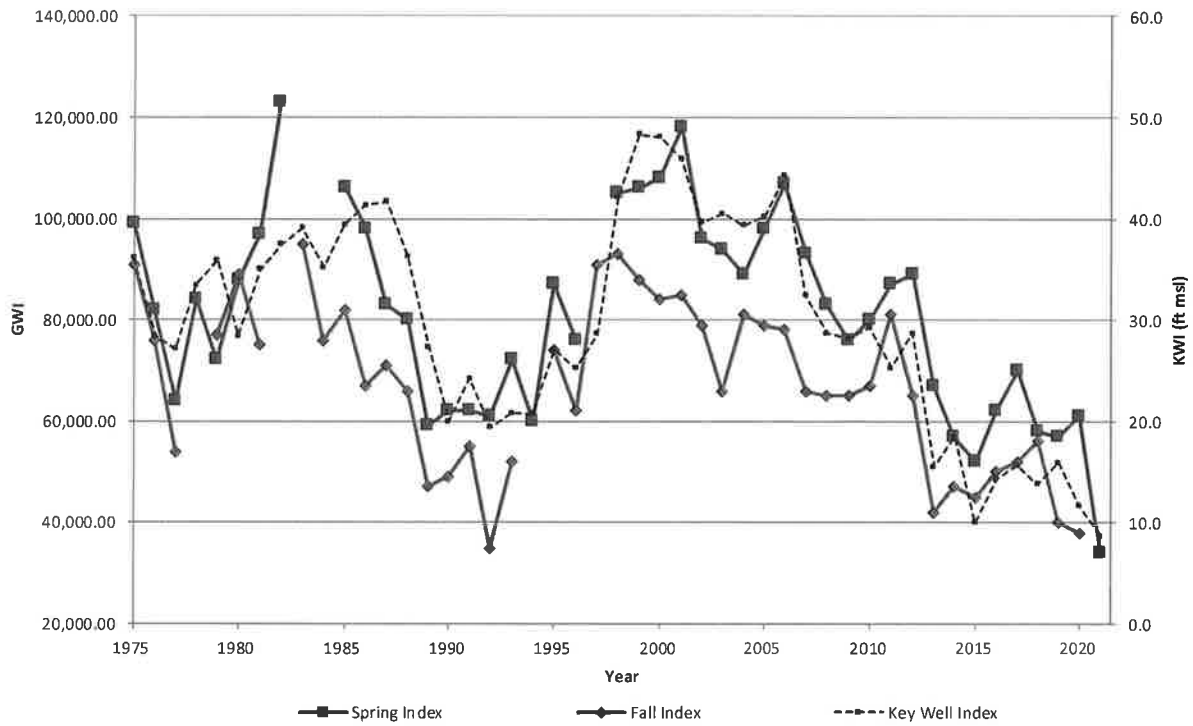
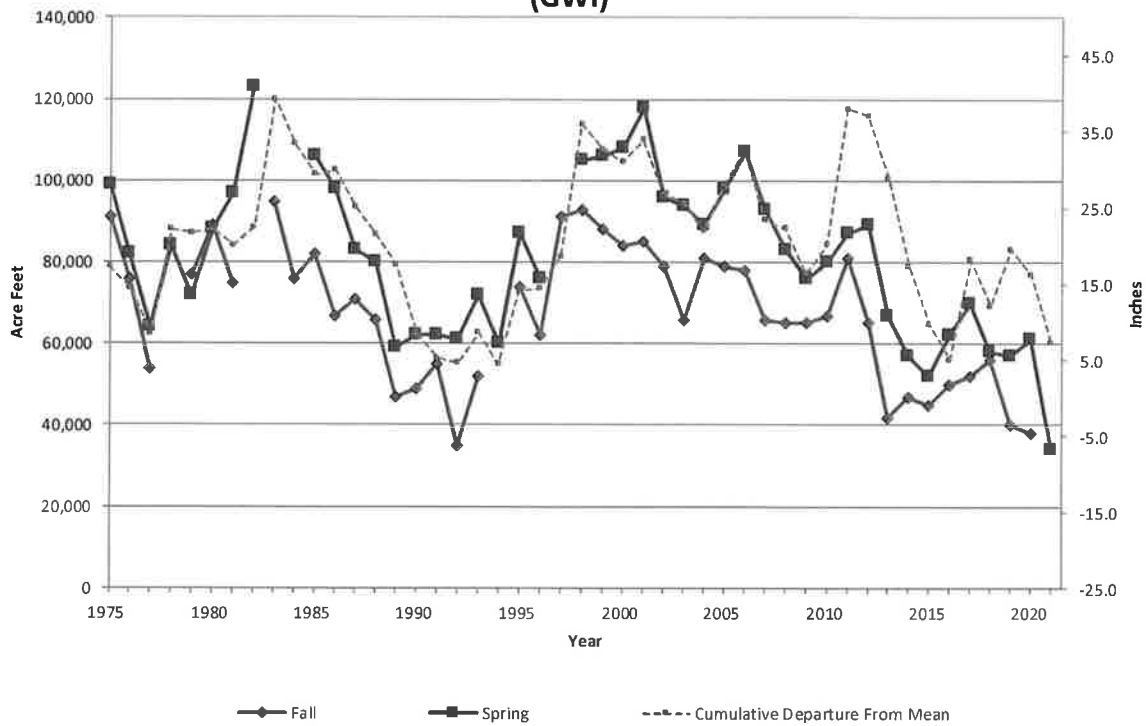


Figure 1: Spring and Fall GWI, and KWI (Spring only) from 1975 to present.

1  
2  
3

TO: Mario Iglesias, GM NCSD  
RE: Spring 2021 GWI  
DATE: June 15, 2021  
Page 6

### Spring and Fall Groundwater Index (GWI)



1  
2  
3

Figure 2: Spring and Fall GWI, and Cumulative Departure of Annual Rainfall from the Mean Rainfall, 1975 to present.

THIS PAGE INTENTIONALLY LEFT BLANK

TO: BOARD OF DIRECTORS

FROM: MARIO IGLESIAS  
GENERAL MANAGER

DATE: JUNE 17, 2021

**AGENDA ITEM**

**D**

**JUNE 23, 2021**

## **CONSENT AGENDA**

The following items are considered routine and non-controversial by staff and may be approved by one motion if no member of the Board wishes an item removed. If discussion is desired, the item may be removed from the Consent Agenda by a Board member and will be considered separately at the conclusion of the Administrative Items. Individual items on the Consent Agenda are approved by the same vote that approves the Consent Agenda, unless an item is pulled for separate consideration. The recommendations for each item are noted in bracket. Members of the public may comment on the Consent Agenda items.

**Questions or clarification may be made by the Board members  
without removal from the Consent Agenda**

- D-1) WARRANTS [RECOMMEND APPROVAL]
- D-2) APPROVE JUNE 9, 2021, REGULAR BOARD MEETING MINUTES  
[RECOMMEND APPROVE MINUTES]

TO: BOARD OF DIRECTORS

REVIEWED: MARIO IGLESIAS  
GENERAL MANAGER



FROM: LISA BOGNUDA  
FINANCE DIRECTOR



DATE: JUNE 18, 2021

**AGENDA ITEM**  
**D-1(A)**  
**JUNE 23, 2021**

**WARRANTS**

COMPUTER CHECKS GENERATED – SEE ATTACHED	\$43,637.68
HAND WRITTEN CHECKS	NONE
VOIDED CHECKS	NONE



Nipomo Community Services District

Item D-1 (A) Warrants JUNE 23, 2021

By Payment Number

Payment Dates 06/23/2021 - 06/23/2021

Vendor Name	Description (Payable)	Payable Number	Payment Date	(None)	Amount
<b>Payment: 7290</b>					
Advantage Answering Plus, In	Answering service	21-422-431	06/23/2021		216.15
					<b>Payment 7290 Total:</b>
					<u>216.15</u>
<b>Payment: 7291</b>					
Alexander's Contract Services,	Meter reading	20210428871	06/23/2021		3,552.27
Alexander's Contract Services,	Meter reading	20210428873	06/23/2021		192.39
					<b>Payment 7291 Total:</b>
					<u>3,744.66</u>
<b>Payment: 7292</b>					
Amazon Capital Services, Inc.	Operating supplies	19Y7-7XVT-LLDP	06/23/2021		175.35
Amazon Capital Services, Inc.	Office supplies	1TQ1-1HR9-XJF	06/23/2021		51.40
Amazon Capital Services, Inc.	Meter supplies	1J1R-6X7G-F336	06/23/2021		10.29
					<b>Payment 7292 Total:</b>
					<u>237.04</u>
<b>Payment: 7293</b>					
American Industrial Supply	Operating supplies	0357881-IN	06/23/2021		10.29
					<b>Payment 7293 Total:</b>
					<u>10.29</u>
<b>Payment: 7294</b>					
Aqua-Metric Sales, Co.	Meter supplies	INV0082896	06/23/2021		10.75
					<b>Payment 7294 Total:</b>
					<u>10.75</u>
<b>Payment: 7295</b>					
Brenntag Pacific, Inc.	Sodium Hypochlorite	BPI149947	06/23/2021		654.12
					<b>Payment 7295 Total:</b>
					<u>654.12</u>
<b>Payment: 7296</b>					
California Electric Supply	Operating supplies	7826-1013192	06/23/2021		47.87
					<b>Payment 7296 Total:</b>
					<u>47.87</u>
<b>Payment: 7297</b>					
Charter Communications	Internet - Shop and/or Office	022495062021	06/23/2021		734.20
Charter Communications	Internet - Shop and/or Office	0225708062221	06/23/2021		734.20
					<b>Payment 7297 Total:</b>
					<u>1,468.40</u>
<b>Payment: 7298</b>					
DataProse, LLC	Mail bills	DP2101643A	06/23/2021		373.70
DataProse, LLC	Postage for bills	DP2101643B	06/23/2021		1,141.06
DataProse, LLC	Pink insert for bills	3P52930	06/23/2021		314.42
					<b>Payment 7298 Total:</b>
					<u>1,829.18</u>
<b>Payment: 7299</b>					
Engel & Gray, Inc.	Biosolids collection	15X00010	06/23/2021		5,497.63
					<b>Payment 7299 Total:</b>
					<u>5,497.63</u>
<b>Payment: 7300</b>					
Excel Personnel Services, Inc.	Employment agency	3745783	06/23/2021		372.00
Excel Personnel Services, Inc.	Employment agency	3741382	06/23/2021		465.00
					<b>Payment 7300 Total:</b>
					<u>837.00</u>
<b>Payment: 7301</b>					
Executive Janitorial	Janitorial services	June 2021	06/23/2021		780.00
					<b>Payment 7301 Total:</b>
					<u>780.00</u>
<b>Payment: 7302</b>					
Famcon Pipe and Supply, Inc.	Operating supplies	S100055694.001	06/23/2021		259.91
					<b>Payment 7302 Total:</b>
					<u>259.91</u>
<b>Payment: 7303</b>					
Farm Supply Company	Copper sulfate 50#	78309	06/23/2021		1,522.39
					<b>Payment 7303 Total:</b>
					<u>1,522.39</u>



## Item D-1 (A) Warrants JUNE 23, 2021

Payment Dates: 06/23/2021 - 06/23/2021

Vendor Name	Description (Payable)	Payable Number	Payment Date	(None)	Amount	
<b>Payment: 7304</b>						
FGL Environmental	Lab tests	180921A	06/23/2021		773.00	
					<b>Payment 7304 Total:</b>	<b>773.00</b>
<b>Payment: 7305</b>						
Hopkins Technical Products, I	Operating supplies	3621300503	06/23/2021		833.36	
					<b>Payment 7305 Total:</b>	<b>833.36</b>
<b>Payment: 7306</b>						
Iglesias, Mario	Cell phone reimbursement	June 2021	06/23/2021		65.00	
					<b>Payment 7306 Total:</b>	<b>65.00</b>
<b>Payment: 7307</b>						
Mechanics Bank	Petty Cash	June 2020	06/23/2021		166.96	
					<b>Payment 7307 Total:</b>	<b>166.96</b>
<b>Payment: 7308</b>						
Mission Uniform Service	Uniforms	514889944	06/23/2021		263.41	
					<b>Payment 7308 Total:</b>	<b>263.41</b>
<b>Payment: 7309</b>						
Nipomo Community Services	Water	MAY 2021	06/23/2021		690.47	
					<b>Payment 7309 Total:</b>	<b>690.47</b>
<b>Payment: 7310</b>						
Nunley & Associates, Inc.	UWMP Update 2020	9065	06/23/2021		8,949.67	
Nunley & Associates, Inc.	Nipomo Senior Housing	9114	06/23/2021		258.53	
Nunley & Associates, Inc.	Joshua Road Pump Station ES	9121	06/23/2021		196.73	
Nunley & Associates, Inc.	Dana Reserve Development	9085	06/23/2021		776.11	
Nunley & Associates, Inc.	Rocky Place	9112	06/23/2021		255.00	
Nunley & Associates, Inc.	Southland Screw Press ESDC	9100	06/23/2021		627.27	
Nunley & Associates, Inc.	Branch Street Waterline Impr	9101	06/23/2021		1,197.12	
Nunley & Associates, Inc.	Frontage Road Commercial D	9115	06/23/2021		1,297.54	
Nunley & Associates, Inc.	Lucky Lane	9116	06/23/2021		1,849.62	
					<b>Payment 7310 Total:</b>	<b>15,407.59</b>
<b>Payment: 7311</b>						
Nu-Tech Pest Management	Rodent Control	0158380	06/23/2021		35.00	
Nu-Tech Pest Management	Rodent Control	0158377	06/23/2021		35.00	
					<b>Payment 7311 Total:</b>	<b>70.00</b>
<b>Payment: 7312</b>						
Office Depot	Office supplies	174198455001	06/23/2021		214.46	
Office Depot	Office supplies	177483197001	06/23/2021		114.83	
					<b>Payment 7312 Total:</b>	<b>329.29</b>
<b>Payment: 7313</b>						
Praxair Distribution, Inc.	Cylinder rental	62517426	06/23/2021		55.78	
					<b>Payment 7313 Total:</b>	<b>55.78</b>
<b>Payment: 7314</b>						
Santa Maria Times	Public Hearing Notices	31210	06/23/2021		556.32	
Santa Maria Times	Public Hearing Notices	31201	06/23/2021		126.28	
Santa Maria Times	Public Hearing Notices	31206	06/23/2021		174.40	
Santa Maria Times	Public Hearing Notices	31204	06/23/2021		113.96	
					<b>Payment 7314 Total:</b>	<b>970.96</b>
<b>Payment: 7315</b>						
Simplot Grower Solutions	CAN 17	780143295	06/23/2021		591.22	
					<b>Payment 7315 Total:</b>	<b>591.22</b>
<b>Payment: 7316</b>						
South County VFW	4th of July Parade	4th of July	06/23/2021		20.00	
					<b>Payment 7316 Total:</b>	<b>20.00</b>
<b>Payment: 7317</b>						
USA Bluebook	Ammonia reagent	624377	06/23/2021		415.06	
USA Bluebook	Chemkey	624404	06/23/2021		867.71	
USA Bluebook	Chemkeys	619433	06/23/2021		4,112.87	

**Item D-1 (A) Warrants JUNE 23, 2021**

**Payment Dates: 06/23/2021 - 06/23/2021**

<b>Vendor Name</b>	<b>Description (Payable)</b>	<b>Payable Number</b>	<b>Payment Date</b>	<b>(None)</b>	<b>Amount</b>
USA Bluebook	Credit Memo	588014	06/23/2021		-329.20
				<b>Payment 7317 Total:</b>	<u>5,066.44</u>
<b>Payment: 7318</b>					
Wallace Group	FOG Program	53527	06/23/2021		1,218.81
				<b>Payment 7318 Total:</b>	<u>1,218.81</u>

TO: BOARD OF DIRECTORS

REVIEWED: MARIO IGLESIAS   
GENERAL MANAGER

FROM: LISA BOGNUDA   
FINANCE DIRECTOR

DATE: JUNE 18, 2021

**AGENDA ITEM**  
**D-1(B)**  
**JUNE 23, 2021**

**WARRANTS – BLACKLAKE ASSESSMENT DISTRICT 2020 -1**

COMPUTER CHECKS GENERATED – SEE ATTACHED	\$30,049.08
--	-------------



Nipomo Community Services District

# Item D-1(B) Warrants JUNE 23, 2021

By Payment Number

Payment Dates 01/13/2021 - 01/13/2021

Vendor Name	Description (Payable)	Payable Number	Payment Date	(None)	Amount
<b>Payment: 10</b> SLO County Public Works	Enc. Permit for BL Sewer Cons	20210230-	01/13/2021		884.00
				<b>Payment 10 Total:</b>	<u>884.00</u>
<b>Payment: 8</b> Cannon Corporation	Blacklake Sewer Consolidatio	74769	01/13/2021		28,731.45
				<b>Payment 8 Total:</b>	<u>28,731.45</u>
<b>Payment: 9</b> Nunley & Associates, Inc.	Southland WWTF Capacity Ev	8532-1	01/13/2021		433.63
				<b>Payment 9 Total:</b>	<u>433.63</u>

TO: BOARD OF DIRECTORS

FROM: MARIO IGLESIAS  
GENERAL MANAGER



DATE: JUNE 17, 2021

**AGENDA ITEM**

**D-2**

**JUNE 23, 2021**

**APPROVE JUNE 9, 2021  
REGULAR BOARD MEETING MINUTES**

**ITEM**

Approve action minutes from previous Board meetings. [RECOMMEND APPROVE MINUTES]

**BACKGROUND**

The draft minutes are a written record of the previous Board Meeting action.

**RECOMMENDATION**

Approve Minutes

**ATTACHMENT**

- A. June 9, 2021 draft Regular Board Meeting Minutes

JUNE 23, 2021

ITEM D-2

ATTACHMENT A

# NIPOMO COMMUNITY SERVICES DISTRICT

*Serving the Community since 1965*

## DRAFT REGULAR MINUTES

**JUNE 9, 2021 AT 9:00 A.M.**

JON S. SEITZ BOARD ROOM 148 SOUTH WILSON STREET, NIPOMO, CA

### BOARD of DIRECTORS

ED EBY, **PRESIDENT**  
DAN ALLEN GADDIS, **VICE PRESIDENT**  
BOB BLAIR, **DIRECTOR**  
DAN WOODSON, **DIRECTOR**  
RICHARD MALVAROSE, **DIRECTOR**

### PRINCIPAL STAFF

MARIO IGLESIAS, **GENERAL MANAGER**  
LISA BOGNUDA, **FINANCE DIRECTOR**  
PETER SEVCIK, **DIRECTOR OF ENG. & OPS.**  
CRAIG STEELE, **GENERAL COUNSEL**

#### Mission Statement:

Provide our customers with reliable, quality, and cost-effective services now and in the future.

*Pursuant to Governor Newsom's Executive Order N-25-20, members of the Nipomo Community Services District Board or staff may participate in this meeting in person, or via teleconference. To protect the health and safety of the public, Board members, and staff, social distancing will be practiced at the District's physical location, 148 S. Wilson Street. Members of the public may choose to participate in person at this location or monitor the audio—via email sent to [info@ncsd.ca.gov](mailto:info@ncsd.ca.gov) prior to the 9:00 am meeting start time. All emails received portion of the meeting and any public hearings telephonically by calling (800) 567-5900 (code 242-2614#). Pursuant to Governor Newsom's Executive Order N-29-20, members of the public may also comment – on items on this agenda or items not on the agenda but within the jurisdiction of the Board by that time will be distributed to the Board. Public participation in the meeting and public hearings will be taken only as described above. If any individual with a disability requires assistance to observe or participate in the meeting, please contact the District office by telephone at least 24 hours in advance.*

### A. CALL TO ORDER AND FLAG SALUTE

*President Eby called the Regular Meeting of June 9, 2021, to order at 9:00 a.m. and led the flag salute.*

### B. ROLL CALL AND PUBLIC COMMENT FOR ITEMS NOT ON AGENDA

*At Roll Call, Directors Malvarose, Woodson, Gaddis, and Eby were present. Director Blair was absent.*

*President Eby brought to the attention of the audience, the fact that the District had the foresight to construct the Supplemental Water Project that provides the community with a reliable source of water, while other cities are imposing water restrictions.*

### C. PRESENTATIONS AND REPORTS

- C-1) DIRECTORS' ANNOUNCEMENTS OF DISTRICT AND COMMUNITY INTEREST AND REPORTS ON ATTENDANCE AT PUBLIC MEETINGS, TRAINING PROGRAMS, CONFERENCES AND SEMINARS.  
Receive Announcements and Reports from Directors

#### *Director Gaddis*

- *June 1, attended Board Officers' meeting.*

#### *Director Eby*

- *May 27, attended CSDA Regional Meeting remotely.*
- *June 1, attended Board Officers' meeting.*
- *June 2, attended a WRAC meeting remotely.*

SUBJECT TO BOARD APPROVAL

Nipomo Community Services District  
DRAFT REGULAR MEETING  
MINUTES

- C-2) RECEIVE PUBLIC COMMENT ON PRESENTATIONS AND REPORTS PRESENTED UNDER ITEM C AND BY MOTION RECEIVE AND FILE PRESENTATIONS AND REPORTS

*There were no public comments.*

D. CONSENT AGENDA

- D-1) WARRANTS [RECOMMEND APPROVAL]
- D-2) APPROVE MAY 26, 2021, REGULAR BOARD MEETING MINUTES [RECOMMEND APPROVE MINUTES]
- D-3) APPROVE QUITCLAIM OF EASEMENT FOR DANA WELL SITE [RECOMMEND ADOPT RESOLUTION APPROVING THE QUITCLAIM OF AN EASEMENT AND AUTHORIZING THE GENERAL MANAGER TO EXECUTE AND RECORD THE DEED FOLLOWING ABANDONMENT OF DISTRICT Well FACILITIES]

*District staff answered questions from the Board regarding the warrants.*

*There were no public comments.*

*Upon the motion of Director Gaddis and seconded, the Board approved the Consent Agenda.*

*Vote 3-1-1 on D-1.*

*Vote 4-0-1 on D-2 and D-3.*

	YES VOTES	ABSTAIN	ABSENT
D-1	Directors Gaddis, Woodson, and Eby	Malvarose	Blair
D-2, D-3	Directors Gaddis, Woodson, Malvarose, and Eby	None	Blair

RESOLUTION NO. 2021-1595  
A RESOLUTION OF THE BOARD OF DIRECTORS OF THE NIPOMO COMMUNITY SERVICES DISTRICT APPROVING THE QUITCLAIM OF AN EASEMENT OVER THE DANA WELL SITE AND AUTHORIZING THE GENERAL MANAGER TO EXECUTE AND RECORD THE DEED

E. ADMINISTRATIVE ITEMS

- E-1) PUBLIC HEARING - APPROVE GENERAL MANAGER'S REPORT AUTHORIZE RECORDATION OF TAX LIENS FOR PROPERTIES IN ARREARS IN PAYMENT OF SOLID WASTE FEES [RECOMMEND CONDUCT HEARING, AMEND GENERAL MANAGER'S REPORT IF NECESSARY, AND BY MOTION AND ROLL CALL VOTE ADOPT RESOLUTION APPROVING GENERAL MANAGER'S REPORT AND AUTHORIZING RECORDATION OF LIENS]

*Lisa Bognuda, Finance Director, presented the item and answered questions from the Board of Directors. Lisa Bognuda, Finance Director, noted that one account would be removed from the Lien list as payment was received.*

*President Eby opened the Public Hearing.*

SUBJECT TO BOARD APPROVAL



Nipomo Community Services District  
DRAFT REGULAR MEETING  
MINUTES

*There were no public comments.*

*President Eby closed the Public Hearing.*

*Upon the motion of Director Malvarose and seconded, the Board approved Resolution.*

*Vote 4-0-1.*

YES VOTES	NO VOTES	ABSENT
Directors Malvarose, Woodson, Gaddis, and Eby	None	Blair

**RESOLUTION NO. 2021-1596  
A RESOLUTION OF THE BOARD OF DIRECTORS OF  
THE NIPOMO COMMUNITY SERVICES DISTRICT  
CONFIRMING REPORT OF DISTRICT GENERAL MANAGER  
AND ORDERING THE COLLECTION OF UNPAID  
SOLID WASTE COLLECTION CHARGES ON THE TAX ROLL**

- E-2) PUBLIC HEARING - APPROVE ENGINEER'S REPORT AND AUTHORIZE COLLECTION OF FY 2021-2022 STREET LANDSCAPE MAINTENANCE DISTRICT ASSESSMENTS [RECOMMEND CONDUCT HEARING, AMEND ENGINEER'S REPORT IF NECESSARY AND BY MOTION AND ROLL CALL VOTE ADOPT RESOLUTION APPROVING ENGINEER'S REPORT AND AUTHORIZING COLLECTION OF ASSESSMENTS]

*Peter Sevcik, Director of Engineering and Operations, presented the item and answered questions from the Board of Directors.*

*President Eby opened the Public Hearing.*

*There were no public comments.*

*President Eby closed the Public Hearing.*

*Upon the motion of Director Woodson and seconded, the Board approved Resolution.  
Vote 4-0-1.*

YES VOTES	NO VOTES	ABSENT
Directors Woodson, Gaddis, Malvarose, and Eby	None	Blair

**RESOLUTION NO. 2021-1597  
A RESOLUTION OF THE BOARD OF DIRECTORS OF THE  
NIPOMO COMMUNITY SERVICES DISTRICT  
ORDERING THE LEVY AND COLLECTION OF  
ASSESSMENTS FOR THE STREET LANDSCAPE MAINTENANCE  
DISTRICT NO. 1 FOR FISCAL YEAR 2021-2022**

- E-3) PUBLIC HEARING APPROVE ASSESSMENT REPORT AND AUTHORIZE COLLECTION OF FISCAL YEAR 2021-2022 BLACKLAKE STREET LIGHTING DISTRICT ASSESSMENTS [RECOMMEND CONDUCT HEARING, AMEND ASSESSMENT REPORT IF NECESSARY AND BY MOTION AND ROLL CALL VOTE ADOPT RESOLUTION APPROVING ASSESSMENT REPORT AND AUTHORIZING COLLECTION OF ASSESSMENTS]

Nipomo Community Services District  
DRAFT REGULAR MEETING  
MINUTES

Mario Iglesias, General Manager, presented the item and answered questions from the Board of Directors.

President Eby opened the Public Hearing.

Pam Wilson, NCSD resident, inquired about how NCSD inherited Blacklake.

Lisa Bognuda, Finance Director, explained that Blacklake infrastructure was bequeathed to NCSD from the County of San Luis Obispo in the early 90's and that the street lights were included.

President Eby closed the Public Hearing.

Upon the motion of Director Woodson and seconded, the Board approved Resolution. Vote 4-0-1.

YES VOTES	NO VOTES	ABSENT
Directors Woodson, Malvarose, Gaddis, and Eby	None	Blair

RESOLUTION NO. 2021-1598  
A RESOLUTION OF THE BOARD OF DIRECTORS  
OF THE NIPOMO COMMUNITY SERVICES DISTRICT  
PROVIDING FOR THE COLLECTION OF STREET LIGHT CHARGES  
ON THE SAN LUIS OBISPO COUNTY TAX ROLLS FOR  
MAINTENANCE AND OPERATION OF EXISTING PUBLIC STREET  
LIGHTS IN THE BLACKLAKE VILLAGE

- E-4) A) PUBLIC HEARING TO ADOPT 2021-2022 FISCAL YEAR BUDGET AND APPROPRIATION LIMIT [RECOMMEND CONDUCT PUBLIC HEARING, CONSIDER TESTIMONY, ORDER EDITS IF ANY AND BY MOTION AND ROLL CALL VOTE ADOPT RESOLUTION APPROVING 2021-2022 FISCAL YEAR BUDGET AND APPROPRIATION LIMITATION]
- (B) ADOPT 2021-2022 FISCAL YEAR BUDGET FOR NIPOMO SUPPLEMENTAL WATER PROJECT (NSWP) [RECOMMEND CONDUCT PUBLIC HEARING, CONSIDER TESTIMONY, ORDER EDITS IF ANY AND BY MOTION AND ROLL CALL VOTE ADOPT RESOLUTION APPROVING NSWP 2021-2022 FISCAL YEAR BUDGET]

Lisa Bognuda, Finance Director, presented and answered questions from the Board of Directors.

President Eby opened the Public Hearing for Item E-4(A).

There were no public comments.

President Eby closed the Public Hearing for Item E-4(A).

Upon the motion of Director Woodson and seconded, the Board approved Resolution. Vote 4-0-1.

YES VOTES	NO VOTES	ABSENT
Directors Woodson, Malvarose, Gaddis, and Eby	None	Blair

Nipomo Community Services District  
DRAFT REGULAR MEETING  
MINUTES

RESOLUTION 2021-1599  
A RESOLUTION OF THE BOARD OF DIRECTORS  
OF THE NIPOMO COMMUNITY SERVICES DISTRICT  
ADOPTING THE 2021-2022 FISCAL YEAR BUDGET

*Upon the motion of Director Gaddis and seconded, the Board approved Resolution.  
Vote 4-0-1.*

YES VOTES	NO VOTES	ABSENT
<i>Directors Gaddis, Woodson, Malvarose, and Eby</i>	<i>None</i>	<i>Blair</i>

RESOLUTION NO. 2021-1600  
A RESOLUTION OF THE BOARD OF DIRECTORS  
OF THE NIPOMO COMMUNITY SERVICES DISTRICT  
DETERMINING THE APPROPRIATION LIMITATION FOR  
THE 2021-2022 FISCAL YEAR

*Lisa Bognuda, Finance Director, presented and answered questions from the Board of Directors.*

*President Eby opened the Public Hearing for Item E-4(B).*

*There were no public comments.*

*President Eby closed the Public Hearing for Item E-4(B).*

*Upon the motion of Director Gaddis and seconded, the Board approved Resolution.  
Vote 4-0-1.*

YES VOTES	NO VOTES	ABSENT
<i>Directors Gaddis, Woodson, Malvarose, and Eby</i>	<i>None</i>	<i>Blair</i>

RESOLUTION 2021-1601  
A RESOLUTION OF THE BOARD OF DIRECTORS  
OF THE NIPOMO COMMUNITY SERVICES DISTRICT  
ADOPTING THE NSWP (NIPOMO SUPPLEMENTAL  
WATER PROJECT) 2021-2022 FISCAL YEAR BUDGET

F. GENERAL MANAGER'S REPORT

*Mario Iglesias, General Manager, presented the General Manager's Report and answered questions from the Board.*

*Mario Iglesias, General Manager, updated the Board regarding the Districts efforts to secure its computer networks against cyber attacks.*

*There were no public comments.*

G. COMMITTEE REPORTS

*None.*

H. DIRECTORS' REQUESTS TO STAFF AND SUPPLEMENTAL REPORTS

*None.*

SUBJECT TO BOARD APPROVAL

Nipomo Community Services District  
DRAFT REGULAR MEETING  
MINUTES

I. CLOSED SESSION ANNOUNCEMENTS

1. CONFERENCE WITH DISTRICT LEGAL COUNSEL RE: PENDING LITIGATION  
PURSUANT TO GC §54956.9

- a. SMVWCD V. NCSD (SANTA CLARA COUNTY CASE NO. CV 770214,  
SIXTH APPELLATE COURT CASE NO. H032750, AND ALL  
CONSOLIDATED CASES

*Closed Session was not necessary.*

ADJOURN MEETING

*President Eby adjourned the meeting at 9:44 p.m.*

MEETING SUMMARY	HOURS & MINUTES
Regular Meeting	0 hour 44 minutes
Closed Session	0 hour 00 minutes
TOTAL HOURS	0 hour 44 minutes

Respectfully submitted,

Mario Iglesias, General Manager and Secretary to the Board

Date

THIS PAGE INTENTIONALLY LEFT BLANK