

Engineering and Operations Update – October 2021 to December 2021



Peter V. Sevcik, P.E.
Director of Engineering and Operations
Nipomo Community Services District
February 9, 2022

Project Completed

Southland WWTF Screw Press

- Original contract cost - \$969,200
- Final Contract Cost – \$978,524
- Completed 12/2021



Projects in Construction

Supplemental Water Project Joshua Road Pump Station Pump #1-4 Improvements

- Contract cost - \$396,059
- Notice to proceed issued – 8/19/2020
- Revised projected completion date – 2/1/2022



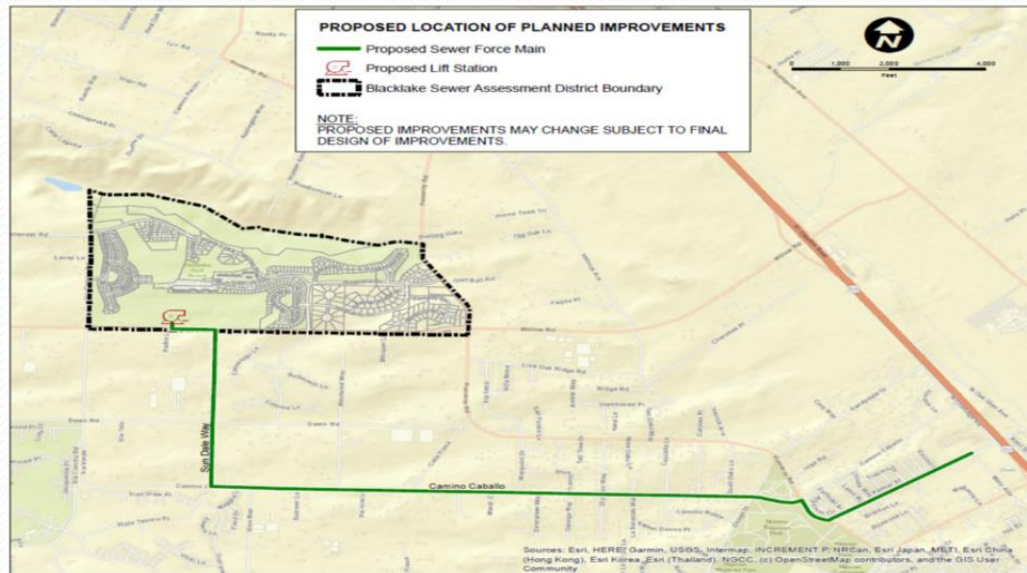
Projects in Construction

Nipomo Palms Lift Station Replacement

- Contract cost – \$918,368
- Notice to Proceed Issued – 5/17/2021
- Revised project completion date – 3/23/2022
- Pump and generator delivery impacted by COVID-19
- Construction in progress



Blacklake Sewer System Consolidation Project



- Construction of lift station and force main to pump wastewater to Southland Wastewater Treatment Facility
- Decommission existing Blacklake Water Reclamation Facility

Blacklake Sewer System Consolidation Project

Contracts to Date

- Permitting assistance contract approved – 7/2020
 - Southland WWTF and Blacklake WRF permitting in progress
- Design contract for lift station and force main approved – 8/2020
 - 90% design review in progress
- Flow monitoring contract approved – 10/2020
 - Completed
- CEQA contract approved – 12/2020
 - Preparation of Mitigated Negative Declaration (MND) in progress

Blacklake Sewer System Consolidation Project

Blacklake WRF Permit

- Current permit was issued in 1994 for 200,000 gallons per day
- Current maximum daily flow is less than 100,000 gallons per day
- RWQCB notified District that facility needs new permit and provided two options:
 - Option to enroll in general permit for facilities with flows 100,000 gallons per day
 - Option to enroll in general permit for facilities with flows greater than 100,000 gallons per day
- Currently planning to enroll facility in general order for facilities with flows less than 100,000 gallons per day to minimize compliance costs for existing facility

Blacklake Sewer System Consolidation Project

Southland WWTF Permit

- Current permit was issued in 2012 for 900,000 gallons per day based on average daily BOD of 250 mg/l and TSS of 250 mg/l
- Current daily flow is 500,000 gallons per day with average BOD of 400 mg/l and TSS of 300 mg/l
- Blacklake Sewer System Consolidation Project will use up most of existing available capacity
- RWQCB has advised District that facility needs new permit in order to accept flow from Blacklake Sewer Service area and suggested enrollment in general permit for facilities with flows greater than 100,000 gallons per day
- Currently preparing application package for submittal to RWQCB

Blacklake Sewer System Consolidation Project

California Environmental Quality Act (CEQA) Compliance

- Preparation of Mitigated Negative Declaration (MND) in progress
- California Red Legged Frog (CRLF) habitat assessment
 - Field survey identified CRLF in effluent discharge pond on golf course
 - District will need to obtain USFWS Section 10 Incidental Take Permit before construction can begin
 - Expected to delay bidding for 12 months
- Botanical surveys
 - Field surveys did not identify protected species
- Cultural resources
 - Native American Heritage Committee records search completed
 - Field survey did not identify cultural resources
 - Tribal consultation is pending

Blacklake Sewer System Consolidation Project

Schedule milestones	Original	New
• Design completion –	12/2021	12/2022
• Permitting completion –	12/2021	12/2022
• Board authorization to bid –	1/2022	1/2023
• Board construction contract award –	5/2022	5/2023
• Construction completion date –	3/2024	3/2025

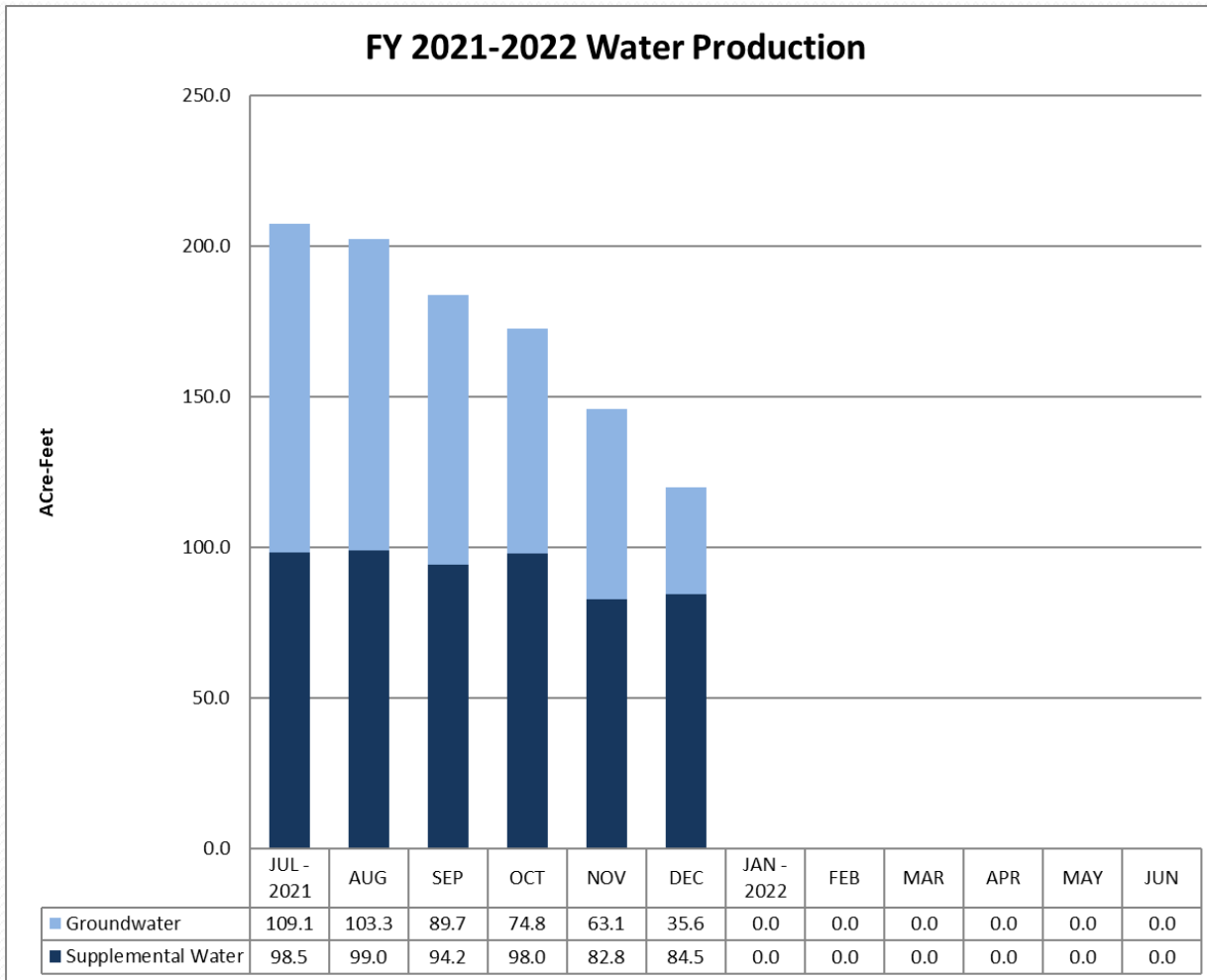
Other Projects in Design

- Branch Street Watermain Replacement
 - 100% design in progress
- Eureka Well #2 Pump and Controls
 - 100% design in progress
- Woodgreen Lift Station
 - 90% design in progress

Other Projects in Design

- District Office Generator
 - 100% design in progress
- Supplemental Water Project Interconnects
 - Woodlands easement recorded
 - Design on hold
- Foothill Tank Land Acquisition
 - Preparation of Mitigated Negative Declaration (MND) in progress

Operations – Water System



Supplemental Water	556.9 AF
Groundwater	475.5 AF
FY 21-22 Total Production To Date	1032.4 AF

Operations – Water System

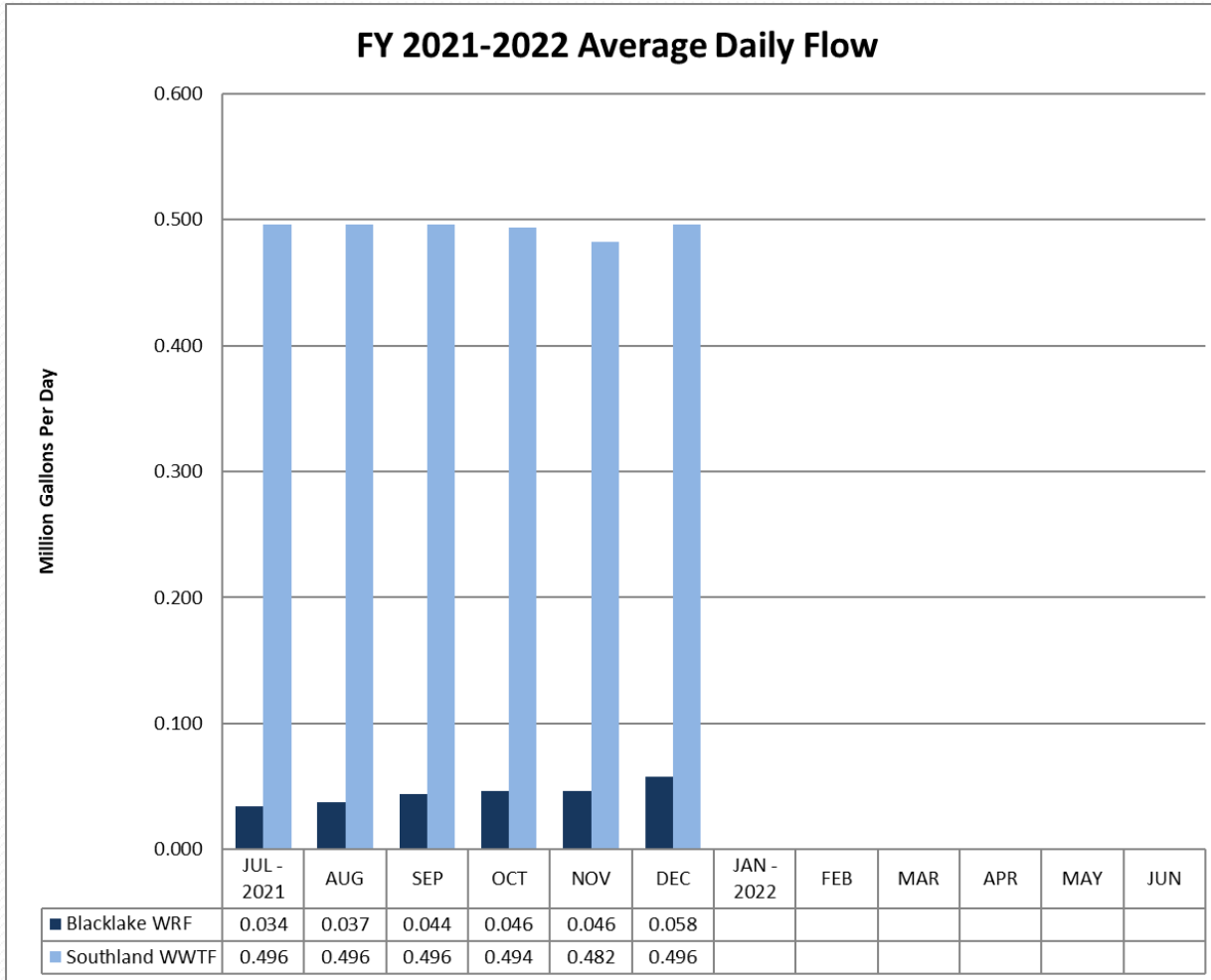
- **Regulatory**

- State Water Resources Control Board Division of Drinking Water
 - Submitted routine monthly coliform, quarterly raw water coliform, quarterly nitrate, quarterly disinfection byproducts

- **Other Water Operations**

- Completed annual electrical system preventive maintenance
- Sundale offline due to nitrate limit exceedance

Operations – Wastewater



Blacklake WRF	7.8 MG
Southland WWTF	90.8 MG
FY 21-22 Total Wastewater Flow Treated To Date	98.6 MG or 303 AF

Operations – Wastewater System

- **Regulatory**

- State Water Resources Control Board
 - Routine monthly and quarterly reports submitted

- **Other Wastewater Operations**

- Completed annual electrical system preventive maintenance
- Blower #3 motor failed but still under warranty

COVID-19 Response Current Status

- Following CDC, state and local guidance
- All operations employees vaccinated
- Staff working normal schedule
- Performing normal operations and maintenance tasks
- Monitoring inventory and availability of critical services, materials and supplies
- Continuing work on construction projects but schedules are being impacted due to delivery delays of equipment

Engineering and Operations

Questions