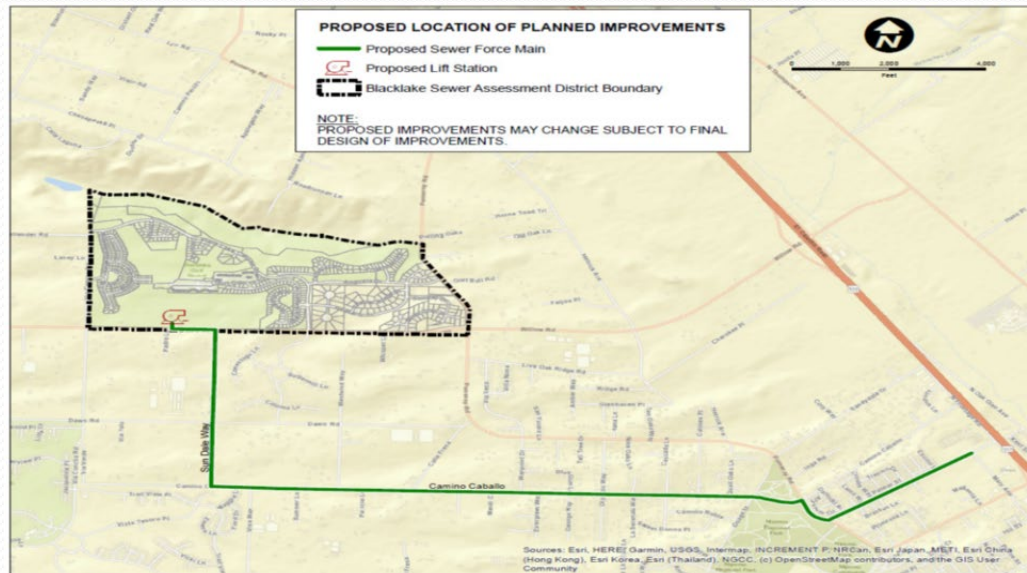


# Engineering and Operations Update – January 2024 to March 2024



Peter V. Sevcik, PE  
Director of Engineering and Operations  
Nipomo Community Services District  
April 10, 2024

# Blacklake Sewer System Consolidation Project



- Construction of lift station and force main to pump wastewater to Southland Wastewater Treatment Facility
- Decommission existing Blacklake Water Reclamation Facility

# Blacklake Sewer System Consolidation Project

## Major Task Status

- Southland WWTF Permit
  - Submitted application to RWQCB in 4/2023 to enroll facility in general permit for facilities with flows greater than 100,000 gallons per day in order to accept flow from the Blacklake Sewer Service Area
  - RWQCB inspected facility on 4/4/2024
  - RWQCB to provide the District with draft permit for review and comment before it is finalized

# Blacklake Sewer System Consolidation Project

## Major Task Status

- Design
  - Blacklake and Woodgreen lift station plans and specifications being finalized to incorporate Incidental Take Permit conditions
  - Lift station contractor prequalification completed
- Environmental Review
  - California Red Legged Frog (CRLF) Habitat Conservation Plan (HCP) submitted to USFWS
  - HCP based on mitigating for potential CRLF habitat loss by paying into federal CRLF mitigation fund
  - Incidental Take Permit issued on 4/3/2024

# Blacklake Sewer System Consolidation Project

| Schedule Milestones                | Original | Revised<br>Force Main | Revised Lift<br>Station |
|------------------------------------|----------|-----------------------|-------------------------|
| Construction Permitting Completion | 12/2021  | 10/2022               | 4/2024                  |
| Design Completion                  | 12/2021  | 10/2022               | 5/2024                  |
| Board Authorization to Pre-Qualify | 1/2022   | 7/2022                | 9/2023                  |
| Board Authorization to Bid         | 3/2022   | 10/2022               | 12/2023                 |
| Board Construction Contract Award  | 6/2022   | 1/2023                | 7/2024                  |
| Construction Completion            | 3/2024   | 1/2024                | 9/2025                  |

# Projects in Construction

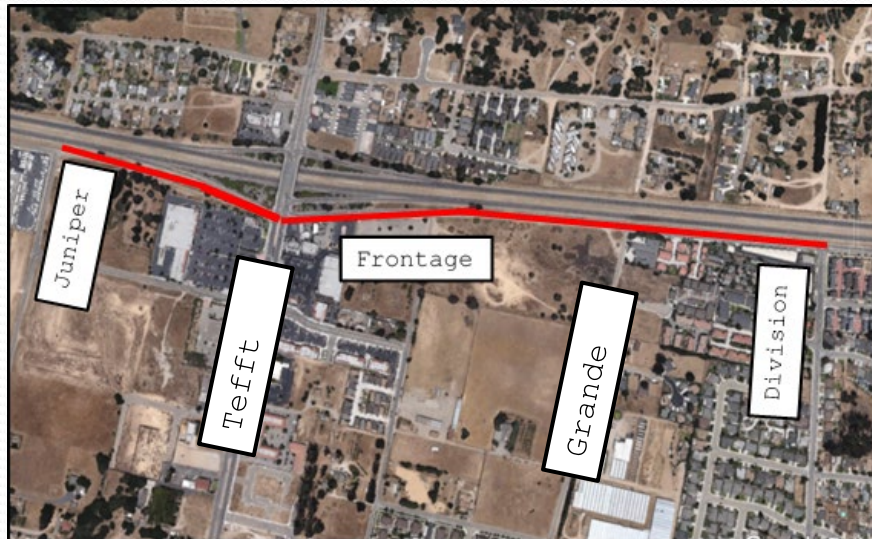
- Southland WWTF Influent Pump Station Repair
  - Scope includes repair and recoating of chemical resistant coatings in influent pump station wetwell and approach manhole as well as removal and replacement of influent pump discharge piping and installation of odor control equipment
  - Wetwell coating completed and bypass operations completed
  - Odor control equipment installation pending receipt of electrical control components
  - Contract cost - \$607,083

# Other Projects

- District Office Generator
  - Completion of electrical work anticipated in 4/2024 pending receipt of new service panel
- USA Ticket Processing
  - New system configured and tested
  - Initial training conducted
  - Expected to go live in 4/2024

# Projects in Design

- Frontage Road Trunk Sewer Replacement
  - 100% design completion pending receipt of encroachment permits
  - Caltrans Encroachment Permit pending
  - SLO County Encroachment Permit pending

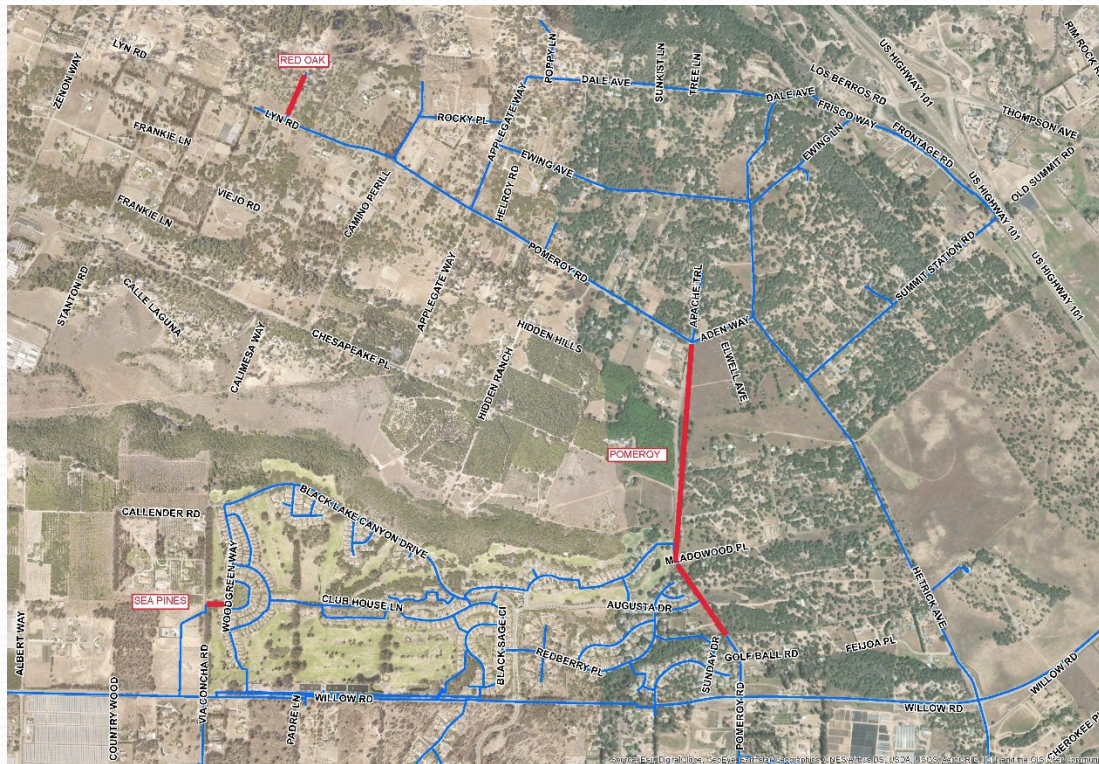






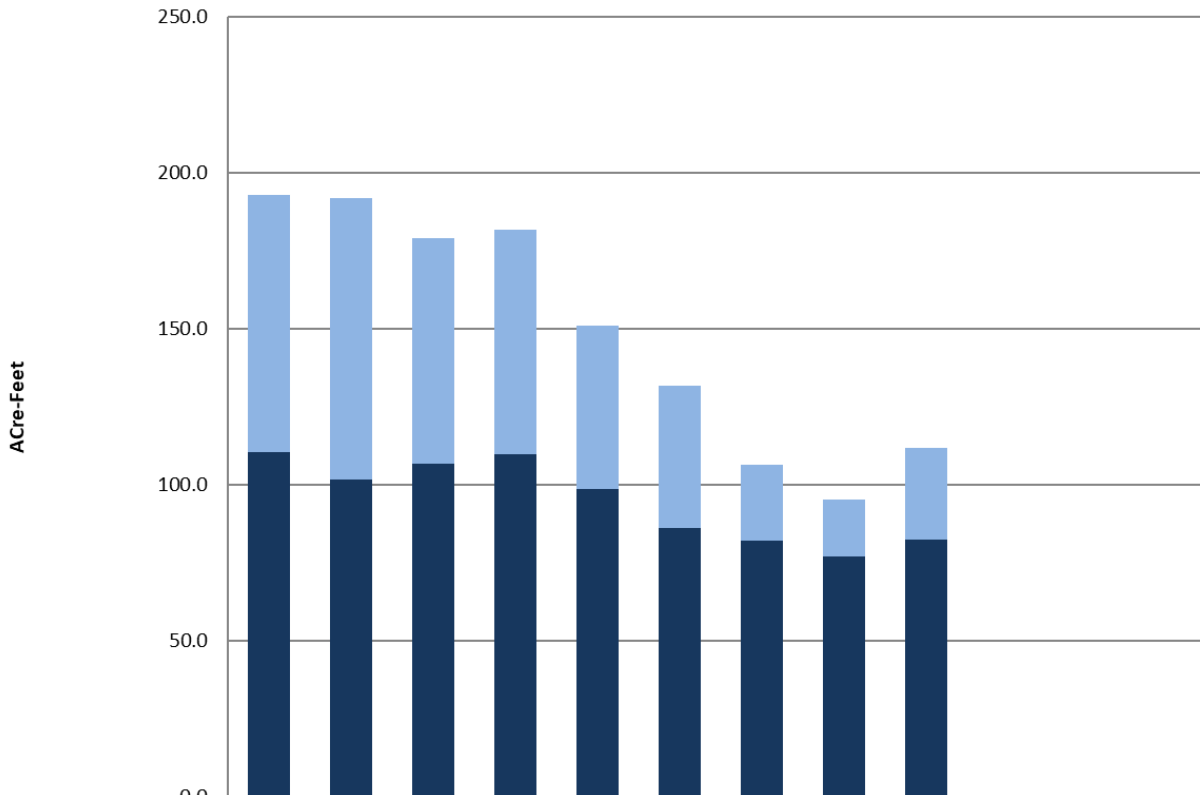
# Projects in Design

- 2023 Water Distribution System Improvements
  - Initial design in progress



# Operations – Water System

**FY 2023-2024 Water Production**



|                    | JUL - 2023 | AUG   | SEP   | OCT   | NOV  | DEC  | JAN - 2024 | FEB  | MAR  | APR | MAY | JUN |
|--------------------|------------|-------|-------|-------|------|------|------------|------|------|-----|-----|-----|
| Groundwater        | 82.6       | 90.3  | 72.4  | 71.8  | 52.3 | 45.7 | 24.4       | 18.5 | 29.5 | 0.0 | 0.0 | 0.0 |
| Supplemental Water | 110.4      | 101.7 | 106.8 | 109.9 | 98.9 | 86.0 | 82.3       | 77.0 | 82.3 | 0.0 | 0.0 | 0.0 |

|  |                |
|--|----------------|
| <b>Supplemental Water</b>                | <b>855 AF</b>  |
| <b>Groundwater</b>                       | <b>487 AF</b>  |
| <b>FY 23-24 Total Production To Date</b> | <b>1342 AF</b> |

# Operations – Water System

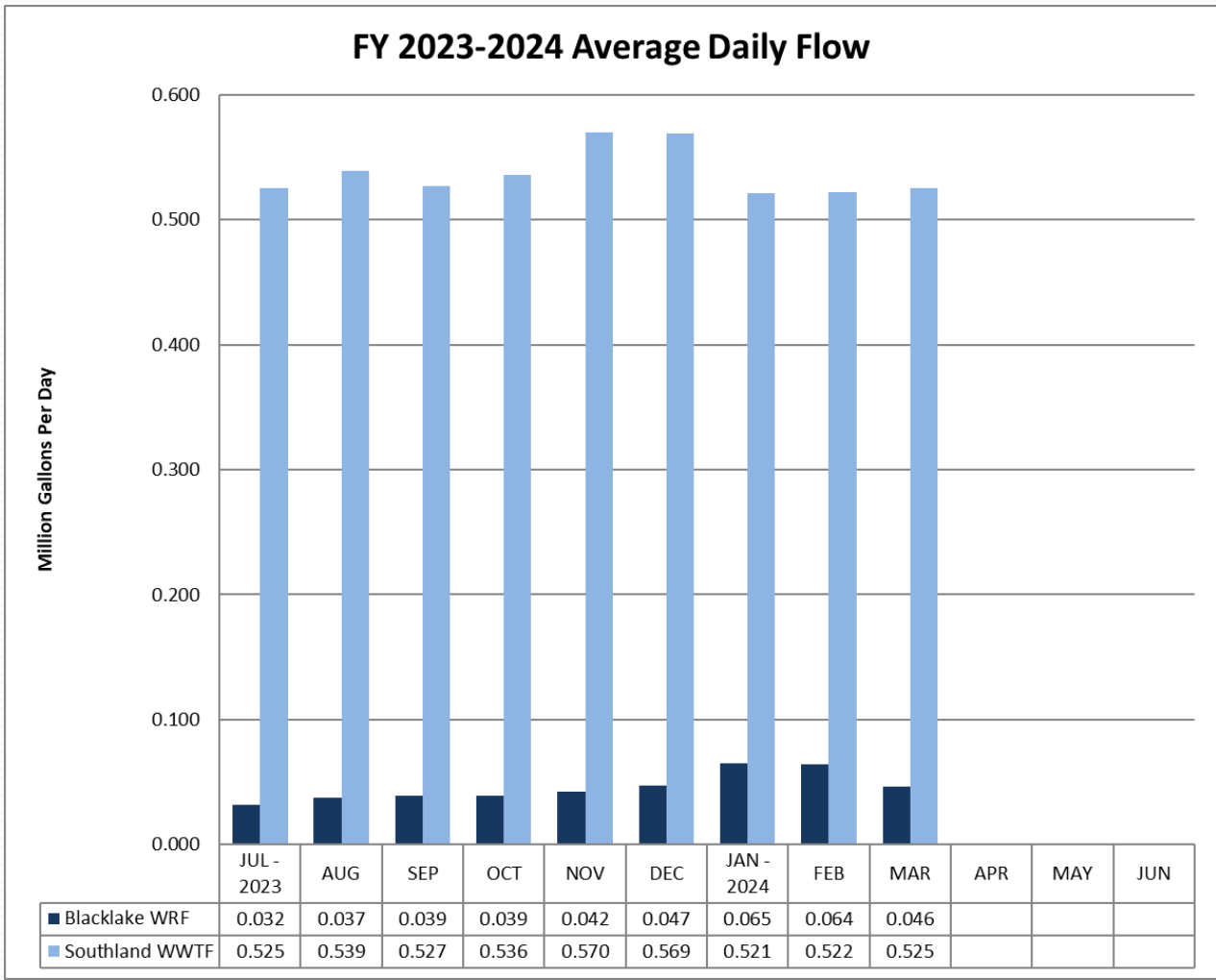
- **Regulatory**
  - Completed initial USEPA Unregulated Contaminant Monitoring Rule 5 (UCMR5) sampling
  - Submitted annual SWRCB DDW Water System electronic Annual Report (eAR)
  - Submitted annual SWRCB Drought Report through Safe and Affordable Funding and Resilience (SAFER) Clearinghouse
  - Submitted annual SLO County Environmental Health Hazardous Material Business Plan (HMBP) update

# Operations – Water System

- **Water Operations Activities**
  - Received valve exerciser truck and put into service
  - Two new operators completed introductory period
  - One operator promoted to Operator 2
  - Replaced a fire hydrant on Peacock
  - Replaced 7 angle stops
  - Replaced electrical service panel at Foothill Tank site

# Operations – Wastewater

**FY 2023-2024 Average Daily Flow**



|   |                         |
|---|-------------------------|
| <b>Blacklake WRF</b>                                  | <b>12.4 MG</b>          |
| <b>Southland WWTF</b>                                 | <b>147 MG</b>           |
| <b>FY 23-24 Total Wastewater Flow Treated To Date</b> | <b>159 MG or 488 AF</b> |

# Operations – Wastewater System

- **Regulatory**

- Submitted annual SWRCB wastewater treatment plant reports for the Blacklake WRF and Southland WWTF
- Central Coast RWRCB inspected the Southland WWTF
- Submitted annual SWRCB sanitary sewer collection system reports through California Integrated Water Quality System (CIWQS)
- SLO County Air Pollution Control District (APCD) inspected the Southland WWTF
- SLO County Environmental Health inspected the Southland WWTF for the Hazardous Material Program

# Operations – Wastewater System

- **Wastewater Operations Activities**
  - Fast tracked 2 OIT's into On-Call schedule
  - Responded to numerous lift station power outages
  - Extended 3 day power outage at the Blacklake WRF
  - Annual maintenance of gravity belt thickener at Southland WWTF
  - Annual maintenance of Clarifier 1 at Southland WWTF
  - Took delivery of new Vactor sewer cleaning machine
  - Began training operators to obtain Class B CDL required for operating new Vactor



# Engineering and Operations

## Questions