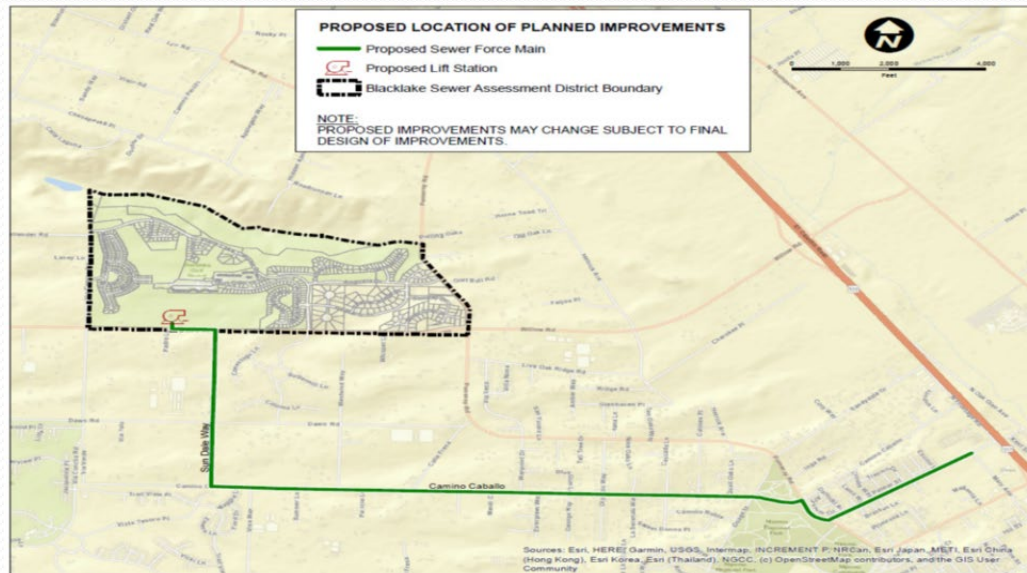


Engineering and Operations Update – April 2024 to June 2024



Peter V. Sevcik, PE
Director of Engineering and Operations
Nipomo Community Services District
July 24, 2024

Blacklake Sewer System Consolidation Project



- Construction of lift station and force main to pump wastewater to Southland Wastewater Treatment Facility
- Decommissioning of existing Blacklake Water Reclamation Facility
- Also includes Woodgreen Lift Station Replacement

Blacklake Sewer System Consolidation Project

Major Task Status

- Environmental Permitting
 - US Fish and Wildlife Service (USFWS) California Red Legged Frog (CRLF) Incidental Take Permit issued on 4/3/2024
 - Federal CRLF mitigation fee of \$307,800 paid
- Lift Station Improvements (Blacklake and Woodgreen)
 - Design completed and project bid
 - Contract for construction in the amount of \$6,641,475 awarded to Spiess Construction Co., Inc.

Blacklake Sewer System Consolidation Project

Schedule Milestones	Original	Revised Force Main	Revised Lift Station
Construction Permitting Completion	12/2021	10/2022	4/2024
Design Completion	12/2021	10/2022	5/2024
Board Authorization to Pre-Qualify	1/2022	7/2022	9/2023
Board Authorization to Bid	3/2022	10/2022	12/2023
Board Construction Contract Award	6/2022	1/2023	7/2024
Construction Completion	3/2024	1/2024	9/2025

Blacklake Sewer System Consolidation Project

Southland WWTF Permit

- Submitted application to RWQCB in 4/2023 to enroll facility in general permit for facilities with flows greater than 100,000 gallons per day in order to accept flow from the Blacklake Sewer Service Area
- RWQCB inspected facility on 4/4/2024
- RWQCB to provide the District with draft permit for review and comment before it is finalized

Other Active Projects

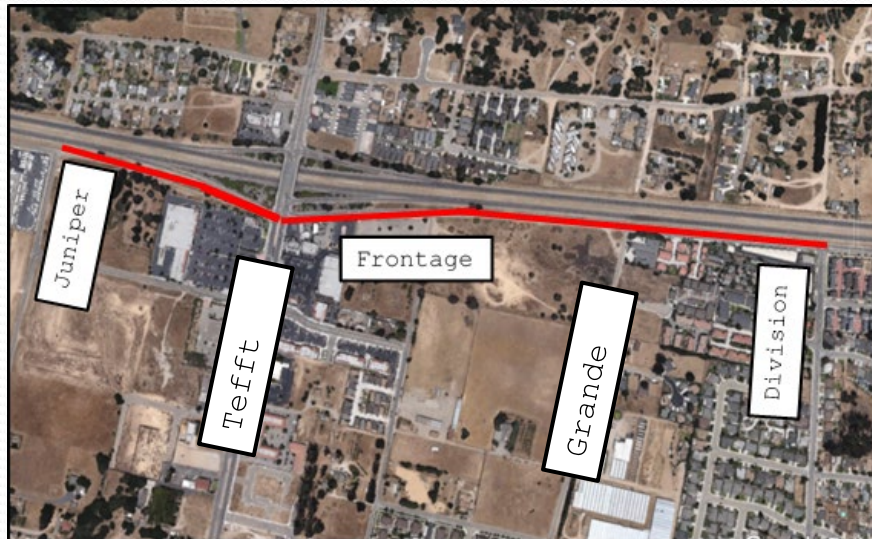
- District Office Generator
 - Coordinating service disconnect/reconnect with PG&E
 - Installation of new service panel and automatic transfer switch pending PG&E service disconnect/reconnect date
- USA Ticket Processing
 - New system configured and tested
 - Went live in 4/2024
 - To date, approximately 160 tickets processed

Completed Projects

- Southland WWTF Influent Pump Station Repair
 - Scope included repair and recoating of chemical resistant coatings in influent pump station wetwell and approach manhole as well as removal and replacement of influent pump discharge piping and installation of odor control equipment
 - Final Contract cost - \$597,060

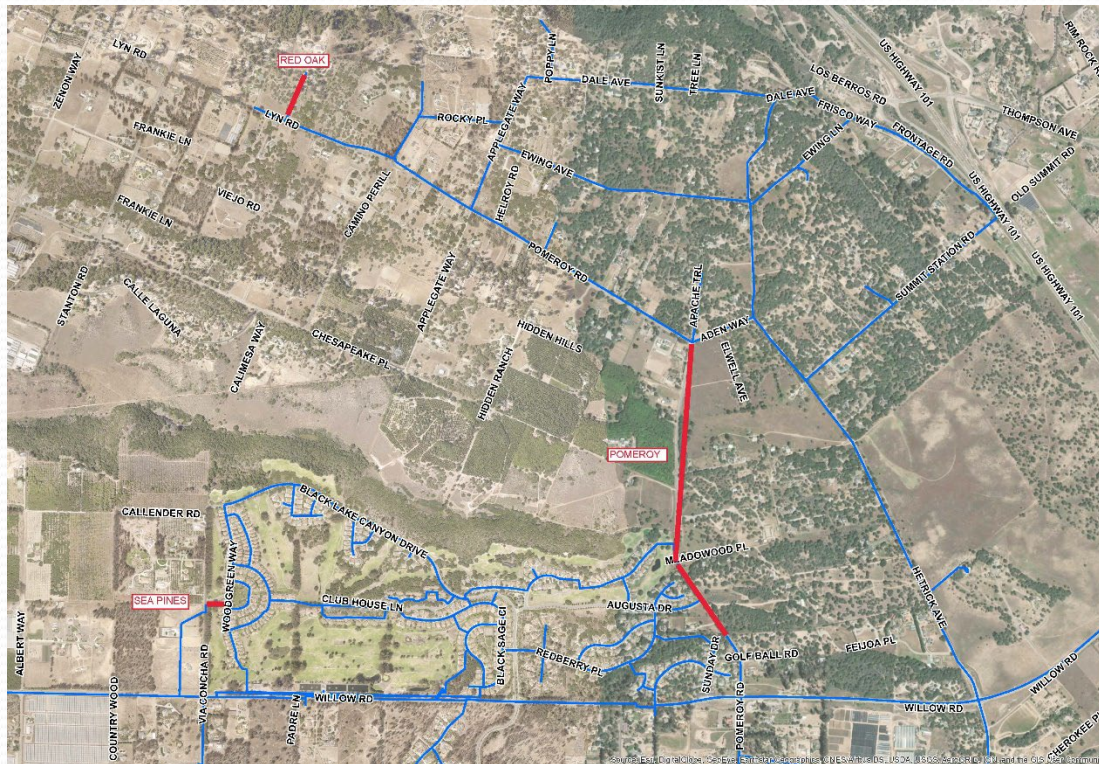
Projects in Design

- Frontage Road Trunk Sewer Replacement
 - 100% design completion pending receipt of encroachment permits
 - Caltrans Encroachment Permit pending
 - SLO County Encroachment Permit pending



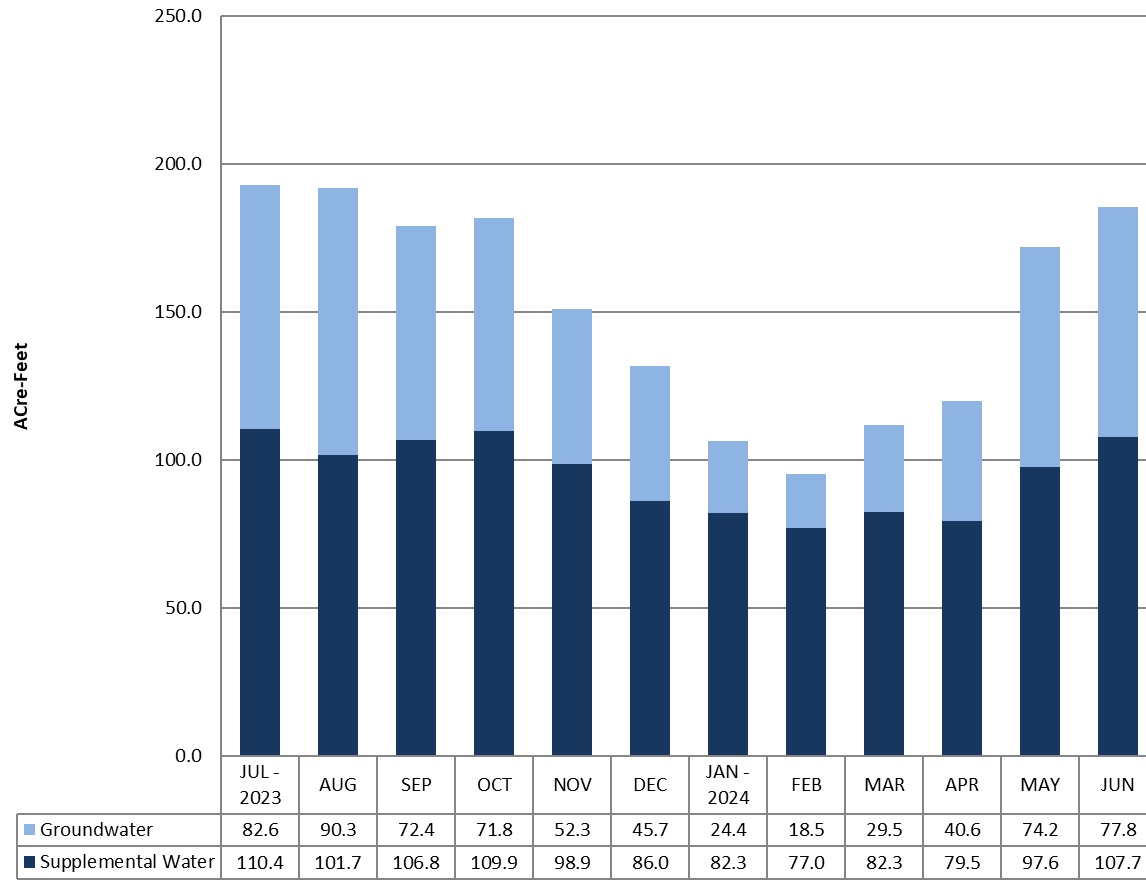
Projects in Design

- 2023 Water Distribution System Improvements
 - 90% design in progress



Operations – Water System

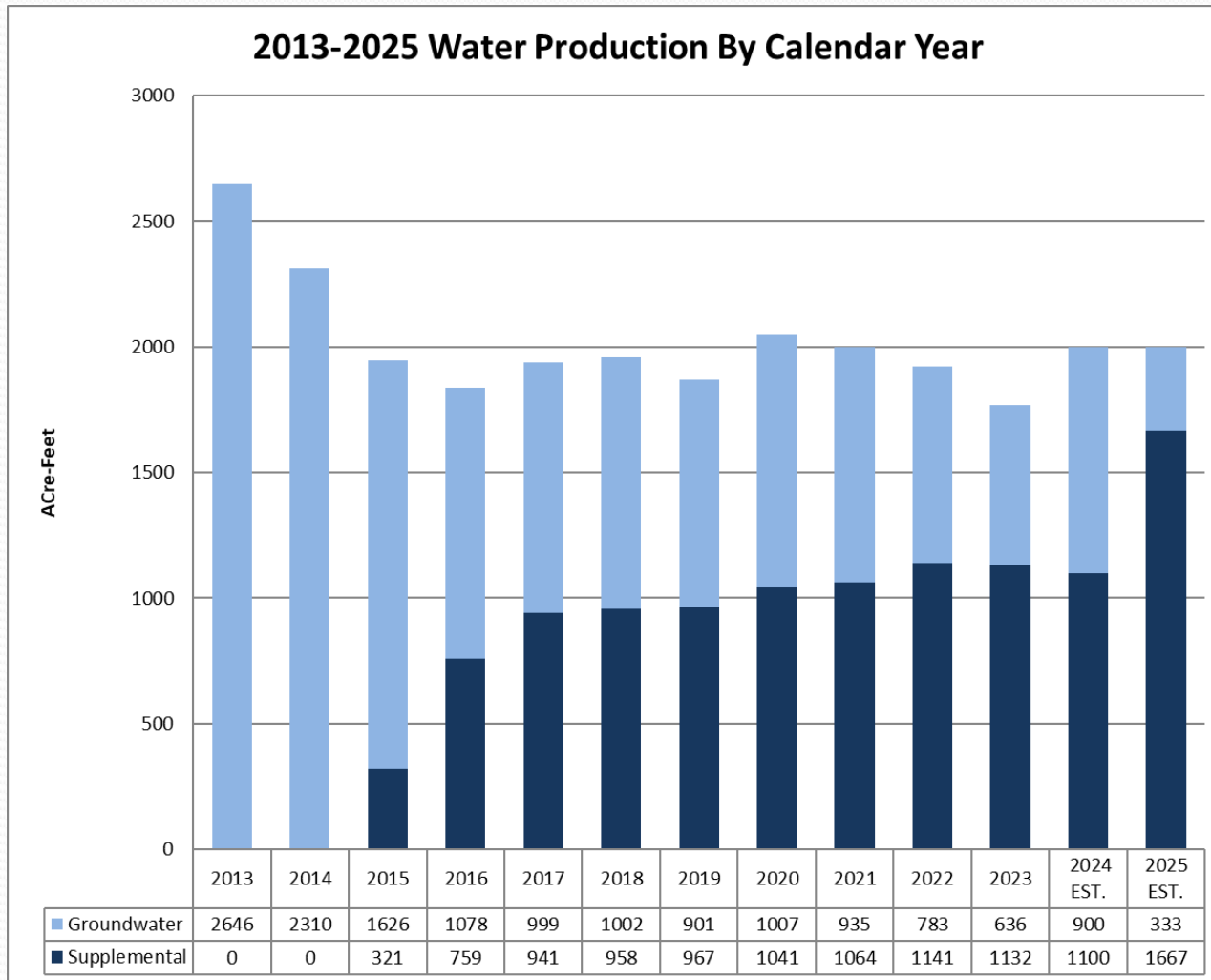
FY 2023-2024 Water Production



Supplemental Water	1140 AF
Groundwater	680 AF
FY 23-24 Total Production To Date	1820 AF

Operations – Water System

2013-2025 Water Production By Calendar Year



Operations – Water System

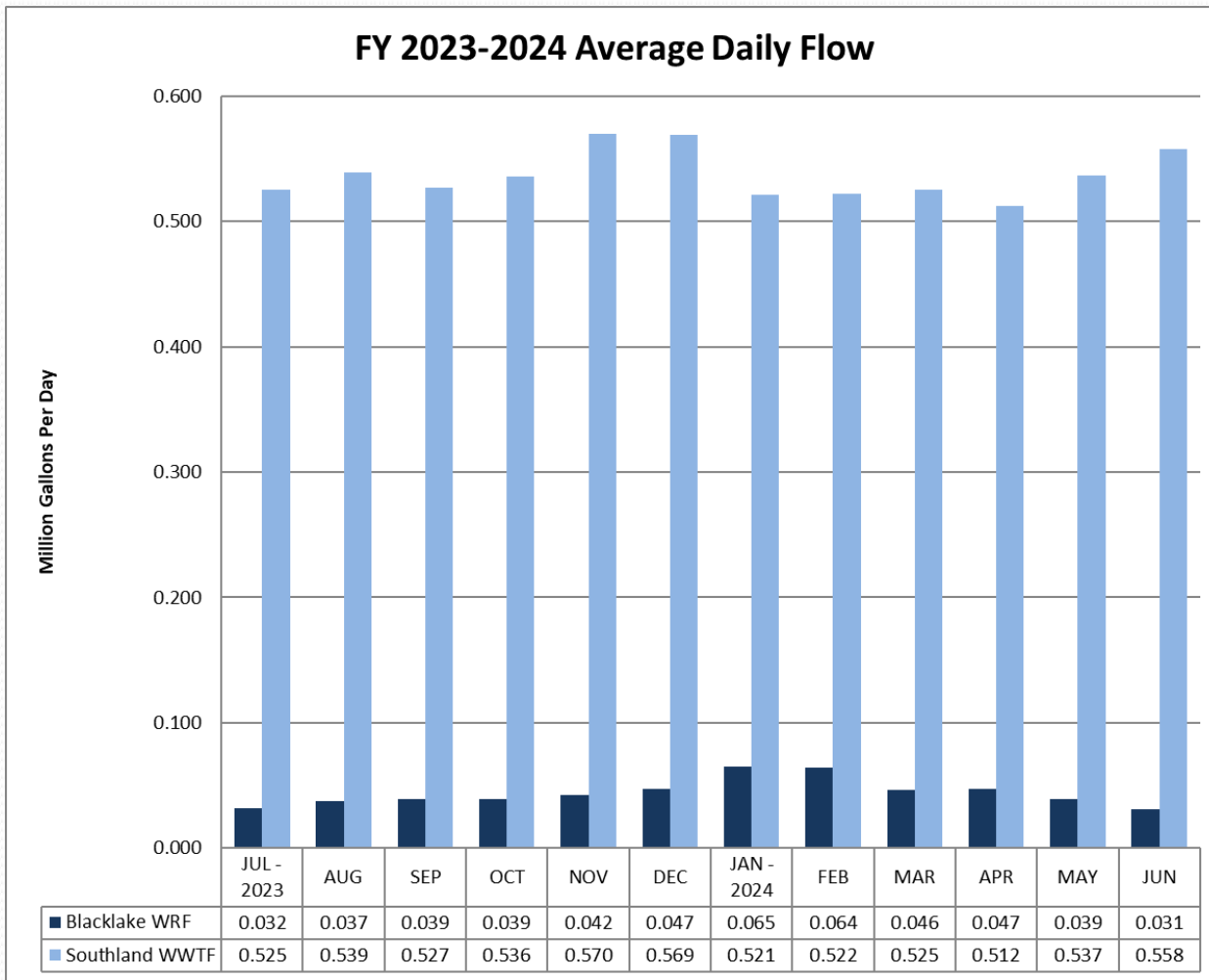
- **Regulatory**
 - Completed USEPA Unregulated Contaminant Monitoring Rule 5 (UCMR5) sampling
 - Tri-Annual SWRCB DDW Water System Inspection
 - Serviced all water site fire extinguishers

Operations – Water System

- **Water Operations Activities**
 - Mandi and Cheyenne Wells abandoned
 - Replaced SCADA antennas at 4 sites
 - Installed Nitrate Analyzer at Sundale Well
 - Replaced Chlorine Analyzers at Sundale Well
 - Initiated Lead Service Line Verification Program
 - Replaced 6 angle stops

Operations – Wastewater

FY 2023-2024 Average Daily Flow



Blacklake WRF	16 MG
Southland WWTF	196 MG
FY 23-24 Total Wastewater Flow Treated To Date	212 MG or 650 AF

Operations – Wastewater System

- **Regulatory**
 - Central Coast RWQCB inspected the Southland WWTF
 - Completed quarterly monitoring at the Blacklake WRF
 - Serviced all wastewater site fire extinguishers

Operations – Wastewater System

- **Wastewater Operations Activities**
 - Replaced fence at Juniper Lift Station
 - Serviced Biolac aerators at Southland WWTF
 - Replaced head works screw conveyor motor at Southland WWTF
 - Continued training operators to obtain Class B CDL required for operating new Vactor
 - Put new Vactor sewer cleaning machine into service
 - Replaced pumps, guiderail, and discharge piping at Oak Glen Lift Station

Engineering and Operations

Questions